

# **APPENDIX B**

## **PROJECT DRAWINGS AND MAPS** **Set 2 of 3**

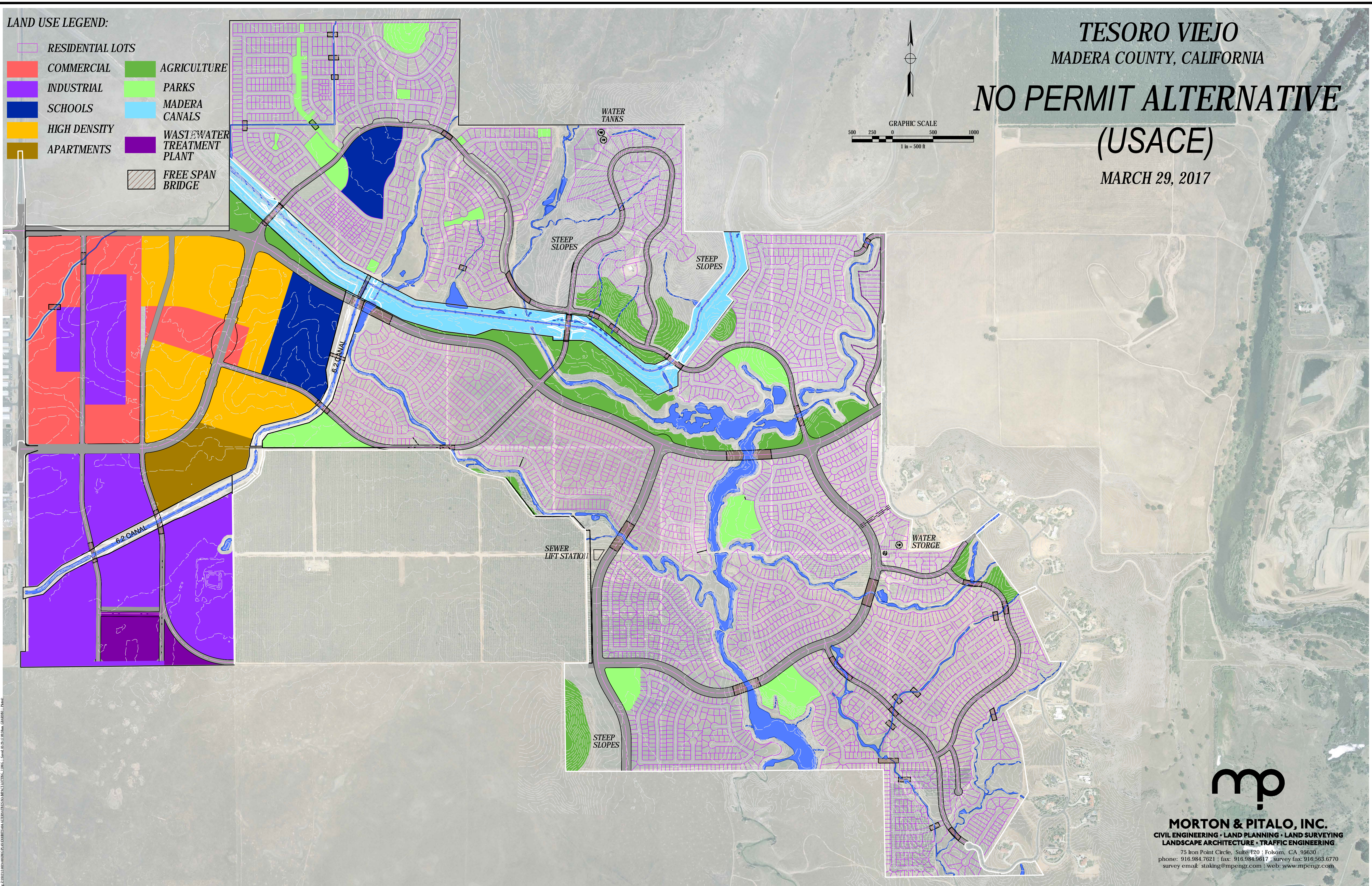
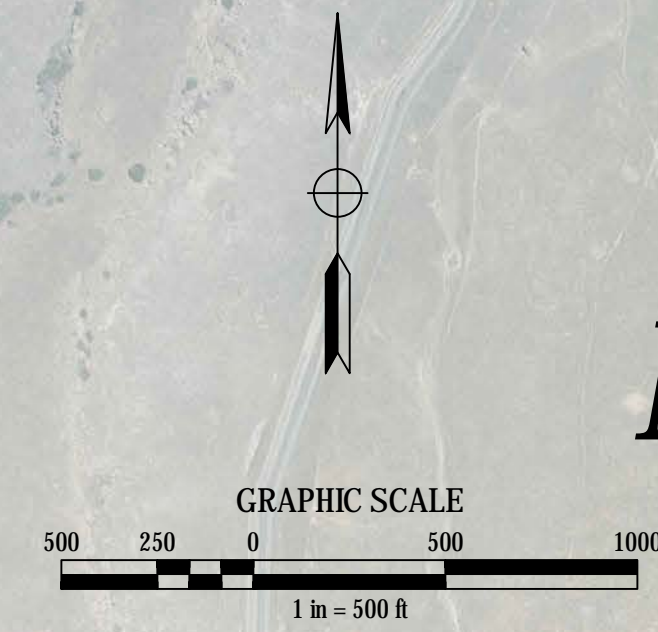
LAND USE LEGEND:

- RESIDENTIAL LOTS
- COMMERCIAL
- INDUSTRIAL
- SCHOOLS
- HIGH DENSITY
- APARTMENTS
- AGRICULTURE
- PARKS
- MADERA CANALS
- WASTEWATER TREATMENT PLANT
- FREE SPAN BRIDGE

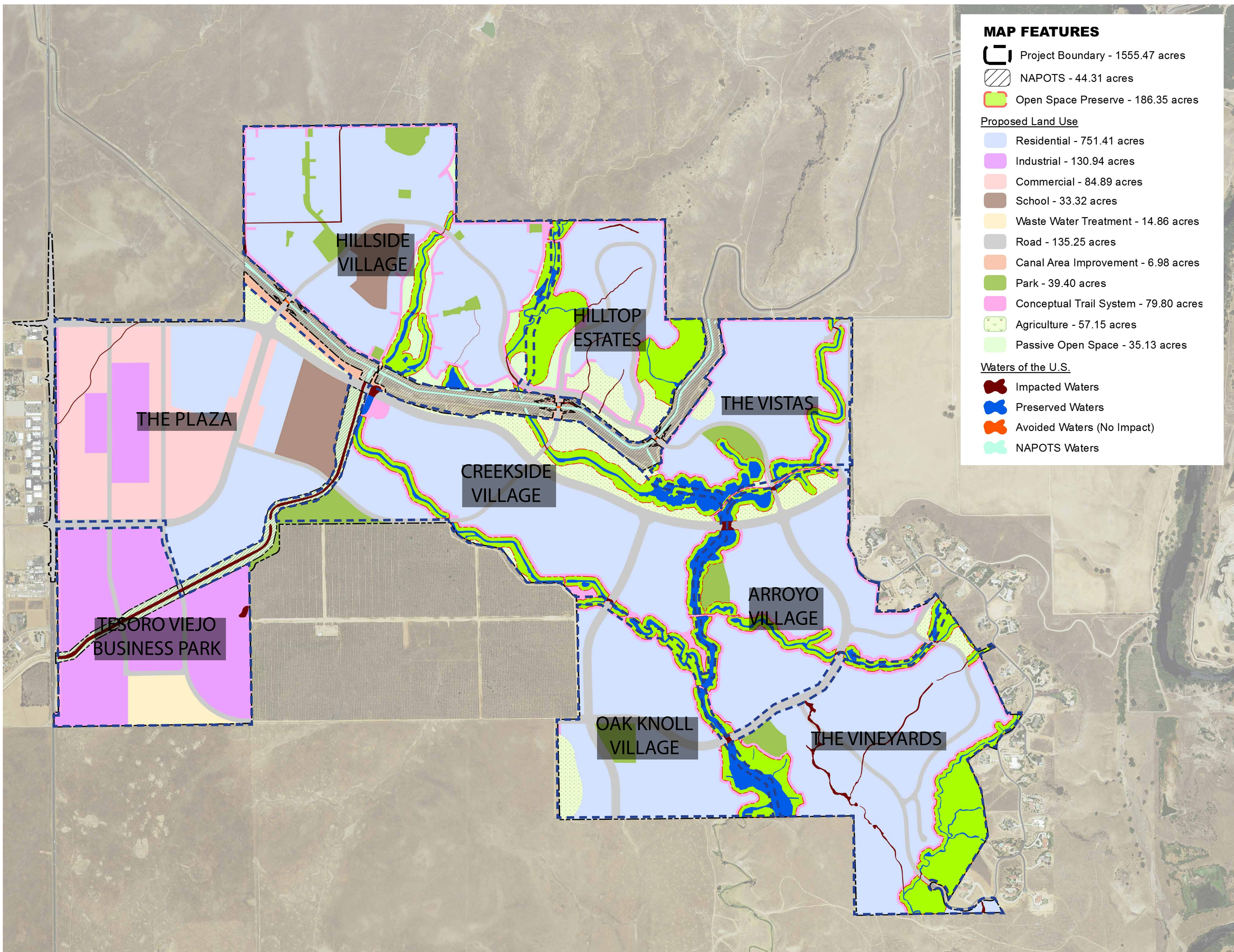
TESORO VIEJO  
MADERA COUNTY, CALIFORNIA

NO PERMIT ALTERNATIVE  
(USACE)

MARCH 29, 2017



**MORTON & PITALO, INC.**  
 CIVIL ENGINEERING • LAND PLANNING • LAND SURVEYING  
 LANDSCAPE ARCHITECTURE • TRAFFIC ENGINEERING  
 75 Iron Point Circle, Suite 120 | Folsom, CA 95630  
 phone: 916.984.7821 | fax: 916.984.9817 | survey fax: 916.563.6770  
 survey email: staking@mpengr.com | web: www.mpengr.com



**MAP FEATURES**

- Project Boundary - 1555.47 acres
- NAPOTS - 44.31 acres
- Open Space Preserve - 186.35 acres

Proposed Land Use

- Residential - 751.41 acres
- Industrial - 130.94 acres
- Commercial - 84.89 acres
- School - 33.32 acres
- Waste Water Treatment - 14.86 acres
- Road - 135.25 acres
- Canal Area Improvement - 6.98 acres
- Park - 39.40 acres
- Conceptual Trail System - 79.80 acres
- Agriculture - 57.15 acres
- Passive Open Space - 35.13 acres

Waters of the U.S.

- Impacted Waters
- Preserved Waters
- Avoided Waters (No Impact)
- NAPOTS Waters