



Photo Point 5 – Data Point 2 Facing North



Photo Point 6 – Data Point 3 Facing North



Photo Point 7 – Data Point 4 Facing North



Photo Point 8 – Data Point 5 Facing North



Photo Point 9 – Data Point 6 Facing East



Photo Point 10 – Irrigation Holding Pond Facing East



Photo Point 10 – Irrigation Holding Pond Facing South



Photo Point 11 – Data Point 7 Facing East



Photo Point 12 – Friant-Kern Canal Facing Upstream



Photo Point 12 – Friant-Kern Canal Facing North



Photo Point 13 –Tailwater Return Ditch Facing South



Photo Point 13 –Tailwater Return Pond Facing Northeast

APPENDIX D

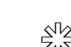




JURISDICTIONAL DELINEATION MAP

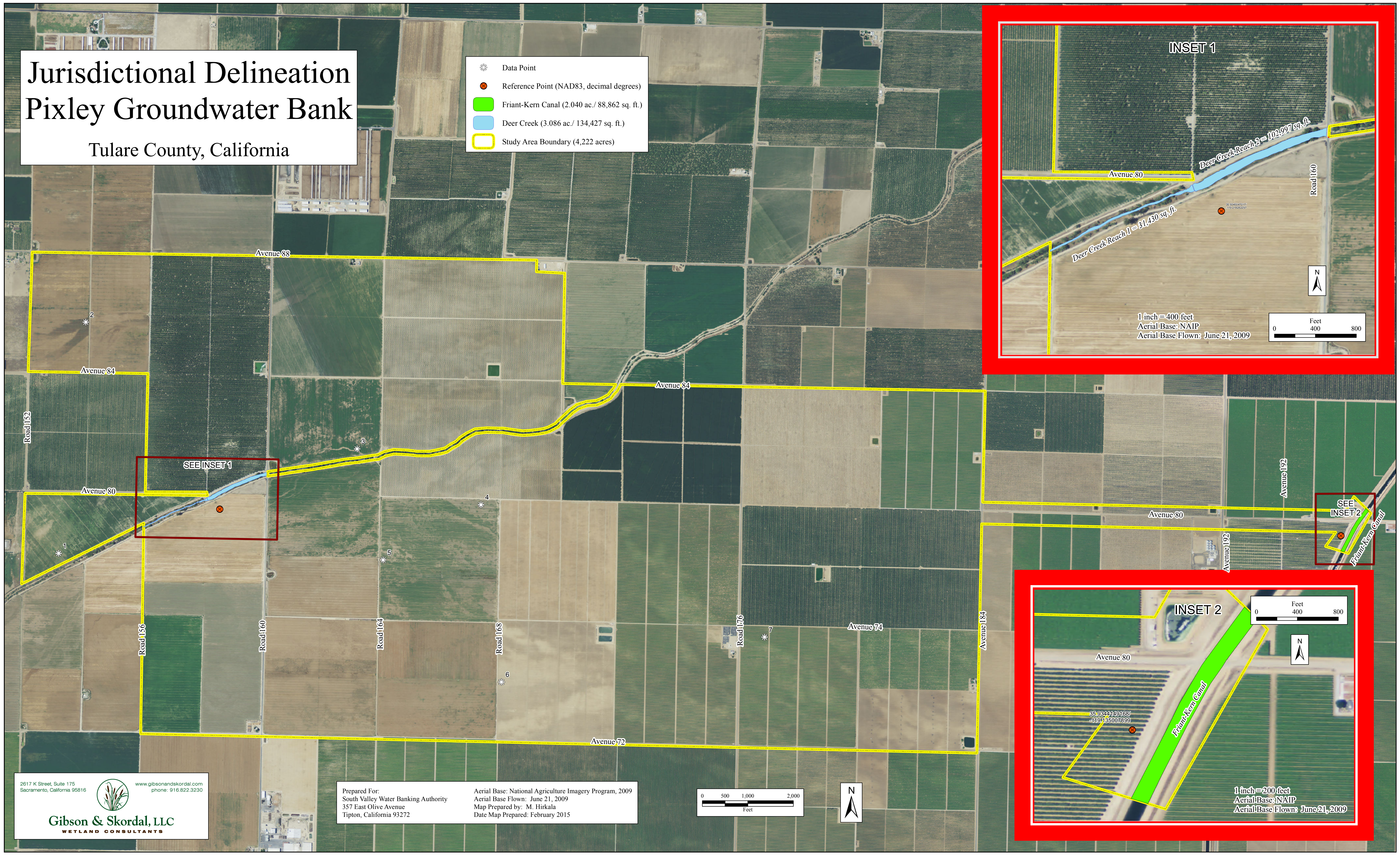


Gibson & Skordal, LLC
WETLAND CONSULTANTS

Jurisdictional Delineation Pixley Groundwater Bank

Tulare County, California

-  Data Point
-  Reference Point (NAD83, decimal degrees)
-  Friant-Kern Canal (2,040 ac./ 88,862 sq. ft.)
-  Deer Creek (3,086 ac./ 134,427 sq. ft.)
-  Study Area Boundary (4,222 acres)

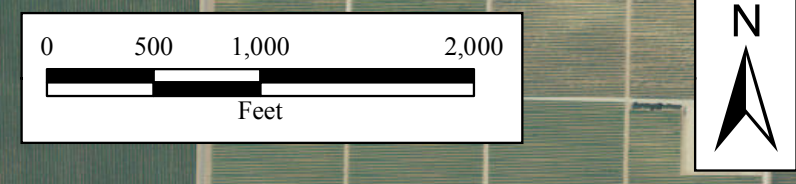


2617 K Street, Suite 175
Sacramento, California 95816
www.gibsonandskordal.com
phone: 916.822.3230

Gibson & Skordal, LLC
WETLAND CONSULTANTS

Prepared For:
South Valley Water Banking Authority
357 East Olive Avenue
Tipton, California 93272

Aerial Base: National Agriculture Imagery Program, 2009
Aerial Base Flown: June 21, 2009
Map Prepared by: M. Hirkala
Date Map Prepared: February 2015



1 inch = 200 feet
Aerial Base: NAIP
Aerial Base Flown: June 21, 2009