

Appendix A

Upper Sacramento River Anadromous Fish Habitat Restoration

Site Figures

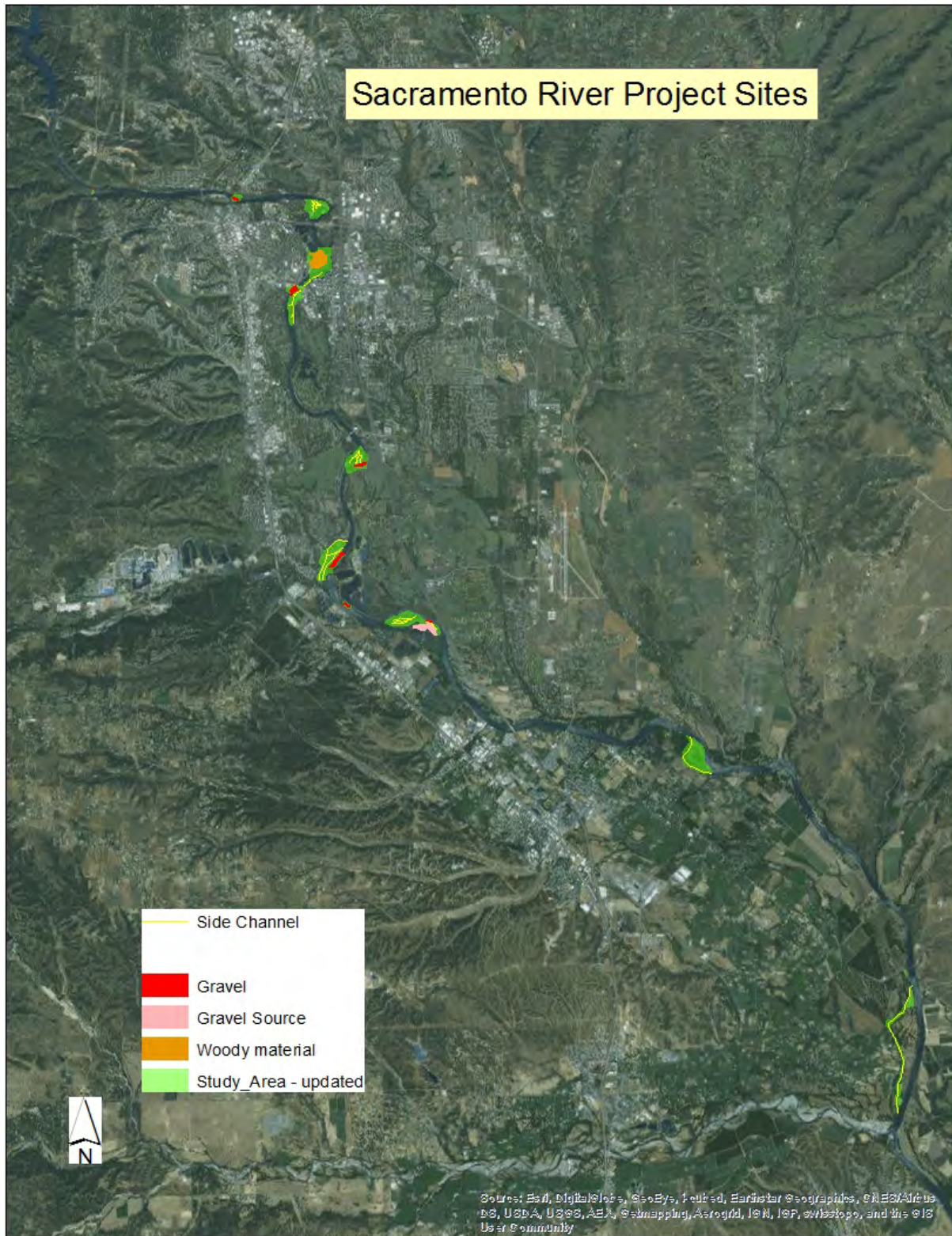


Figure A-1. Overview of Upper Sacramento River Anadromous Salmonid Habitat Restoration Sites.

Site 1 – Keswick Dam (RM 302)

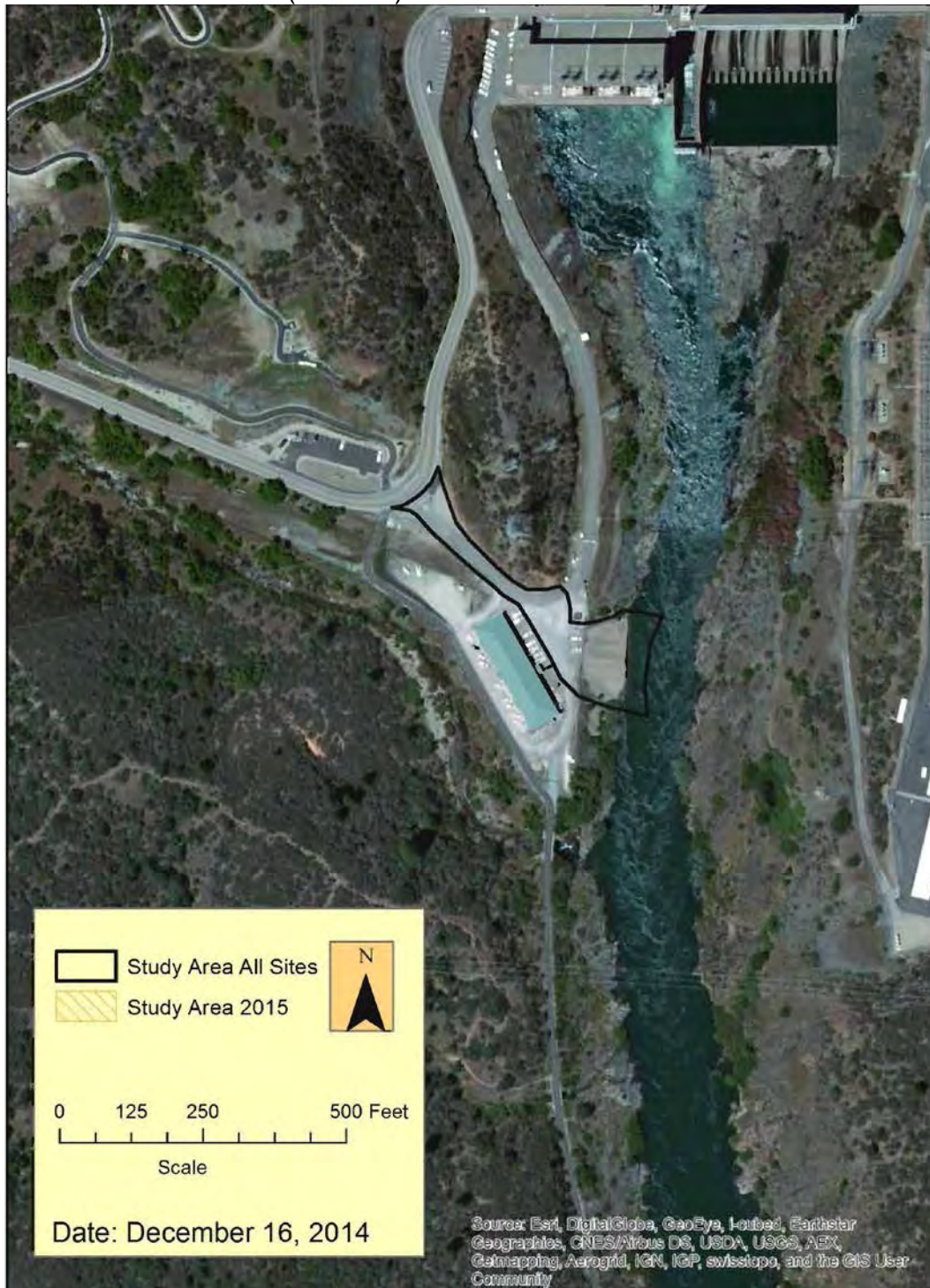


Figure A-2. Site 1 – Keswick Dam (RM 302). Approximate location 122°26'46.8161" W 40°36'32.5579" N (Section 21, T32N, R5W MDM) in the USGS 7.5 Minute Redding Quadrangle.



Figure A-3. Keswick gravel augmentation site following 15,000 tons placed in 2012, looking downstream.



Figure A-4. Keswick gravel augmentation site looking upstream (river right) in 2014.

Site 2 – Salt Creek (RM 300.7)

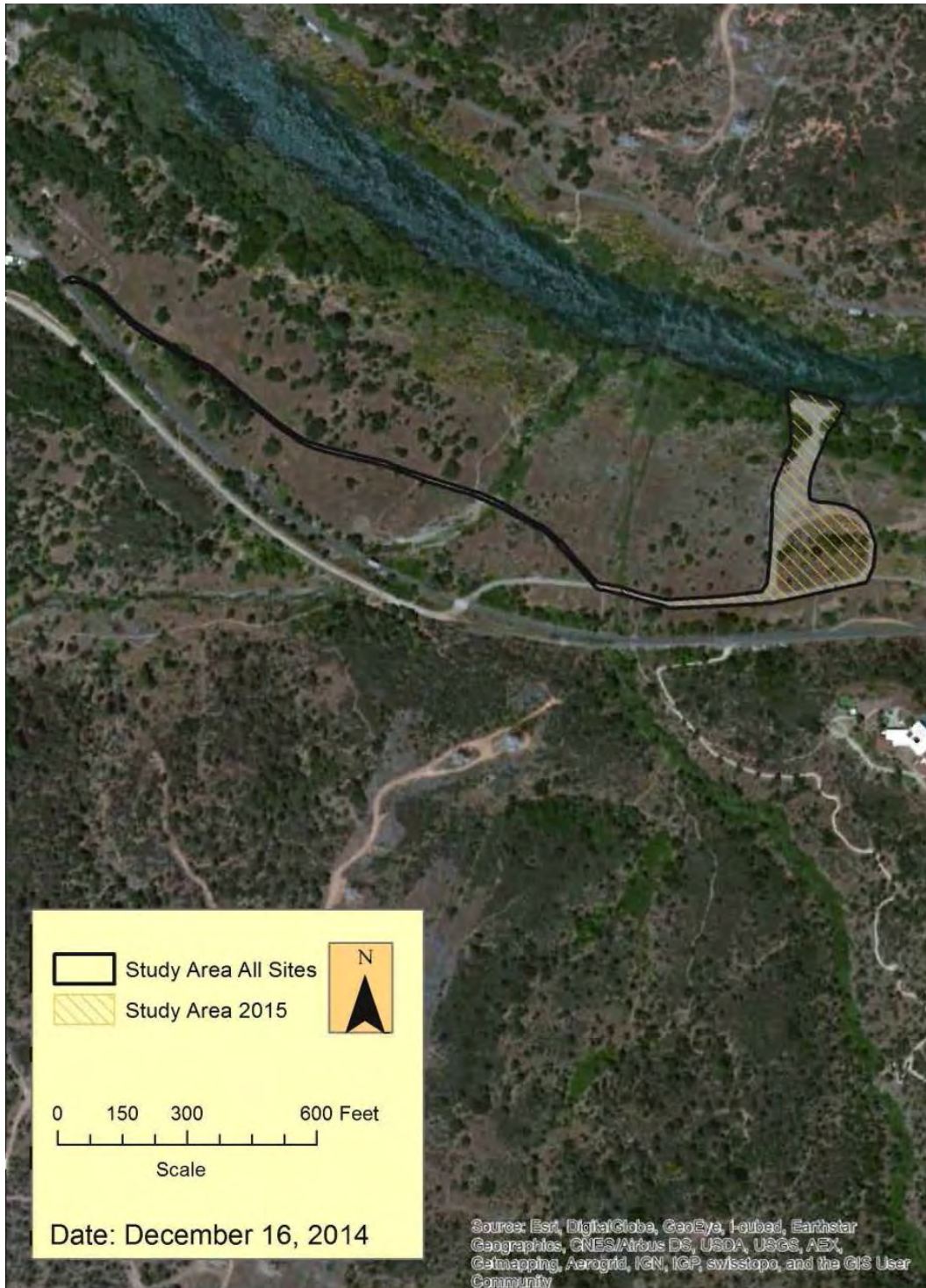


Figure A-5. Site 2 – Salt Creek (RM 300.7). Approximate location 122°26'1.25" W 40°35'38.73" N (Section 33 T32N, R5W MDM) in the USGS 7.5 Minute Redding Quadrangle.



Figure A-6. Salt Creek gravel augmentation site looking downstream (river right).

Site 3 – Market Street South (RM 298.3)

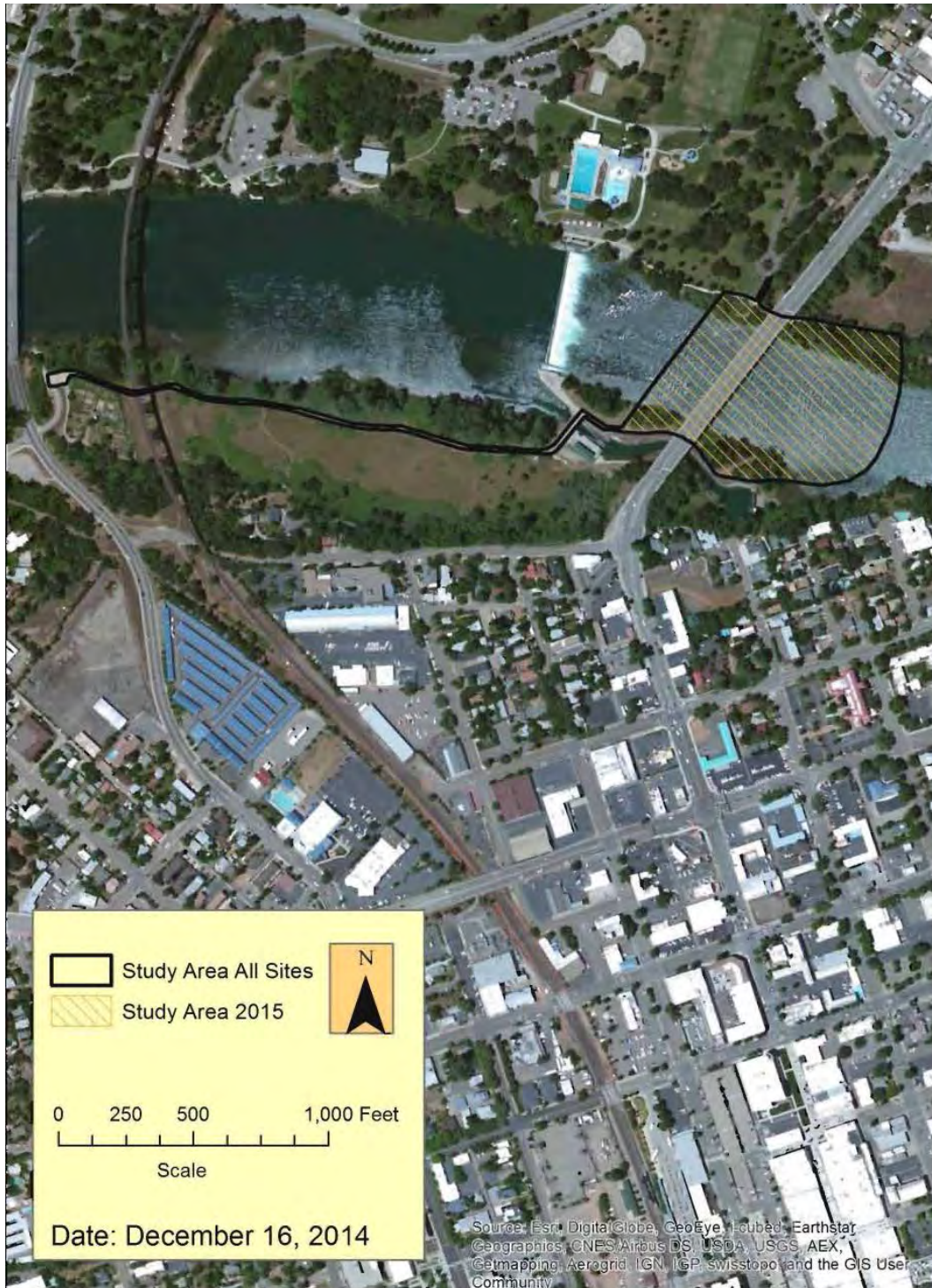


Figure A-7. Site 3 – Market Street South (RM 298.3). Approximate location 122°23'34.0933" W 40°35'30.6504" N (Section 35 and 36, T32N, R5W MDM) in the USGS 7.5 Minute Redding Quadrangle.



Figure A-8. Looking downstream (river right) under the Market Street bridge.



Figure A-9. Looking upstream (river left) across the river to Site 3.

Site 4– Turtle Bay Island (RM 297)



Figure A-10. Site 4 – Turtle Bay Island (RM 297). Approximate location 122°22'7.9095" W 40°35'25.0966" N (Section 31, T32N, R4W MDM) in the USGS 7.5 Minute Enterprise Quadrangle.



Figure A-11. Turtle Bay Island looking northwest at the side channel.



Figure A-12. Turtle Bay Island.

Sites 5-7 – Kutras Lake and Cypress Ave Bridge North and South (RM 295-296)



Figure A-13. Sites 5-7 – Kutras Lake and Cypress Avenue Bridge North and South (RM 295-296). Approximate location 122°22'2.03" W 40°34'39.81" N (Section 36, T32N, R5W; Section 6, T31N, R4W; Section 1, T31N, R5W MDM) in the USGS 7.5 Minute Enterprise Quadrangle.



Figure A-14. Cypress Avenue Bridge North (Site 6) looking upstream across the river at the southeastern end of site.

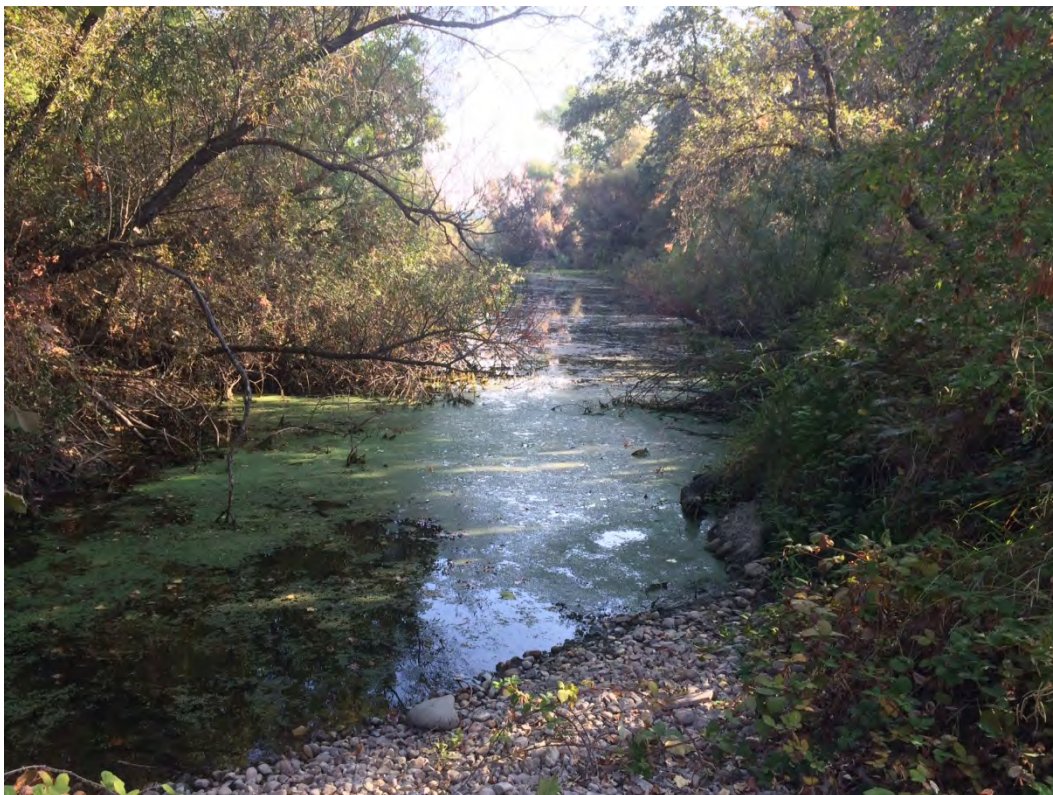


Figure A-15. Cypress Avenue North (Site 6) lower slough looking upstream.



Figure A-16. Cypress Avenue Bridge South (Site 7) pond.



Figure A-17. Cypress Ave Bridge South (Site 7) on river right.

Site 8 – Tobiasson Island Area (RM 291.6)



Figure A-18. Site 8–Tobiasson Island Area (RM 291.6). Approximate location 122°21'24.0196" W 40°31'59.3017" N (Section 19, T31N, R4W MDM) in the USGS 7.5 Minute Enterprise Quadrangle.

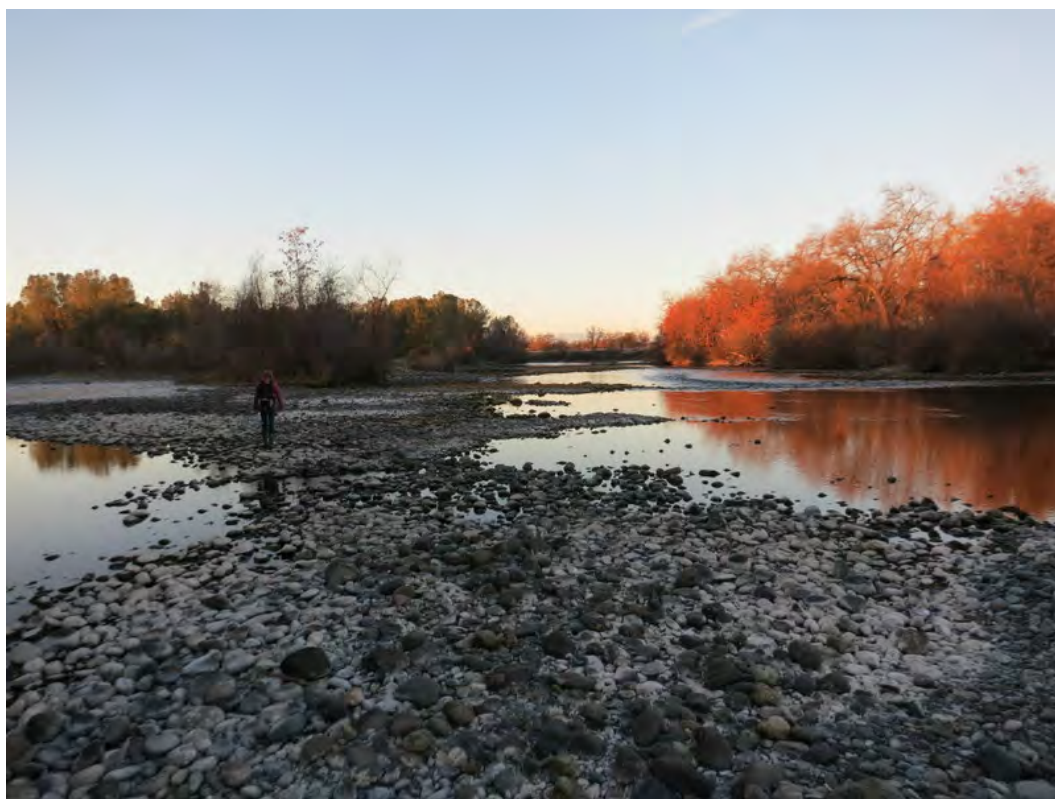


Figure A-19. Upstream end of Tobiasson side channel looking downstream (river right) at approximately 3,250 cfs.



Figure A-20. Looking downstream (river left) on the main channel across from the downstream end of Tobiasson Island.

Sites 9 and 10– Shea Island and Levee, and South Shea Levee (RM 289-289.6)



Figure A-21. Sites 9 and 10 – Shea Island and Levee and South Shea Levee (RM 289-289.6). Approximate location 122°21'41.2068" W 40°30'37.1494" N (Section 30, T31N, R4W; Section 31, T31N, R4W MDM) in the USGS 7.5 Minute Enterprise Quadrangle.



Figure A-22. Shea Island middle side channel looking upstream (river right) at approximately 3250 cfs.



Figure A-23. Shea Island main side channel looking upstream (river right, far right channel) at approximately 3250 cfs.

Site 11– Kapusta Island Area (RM 288)

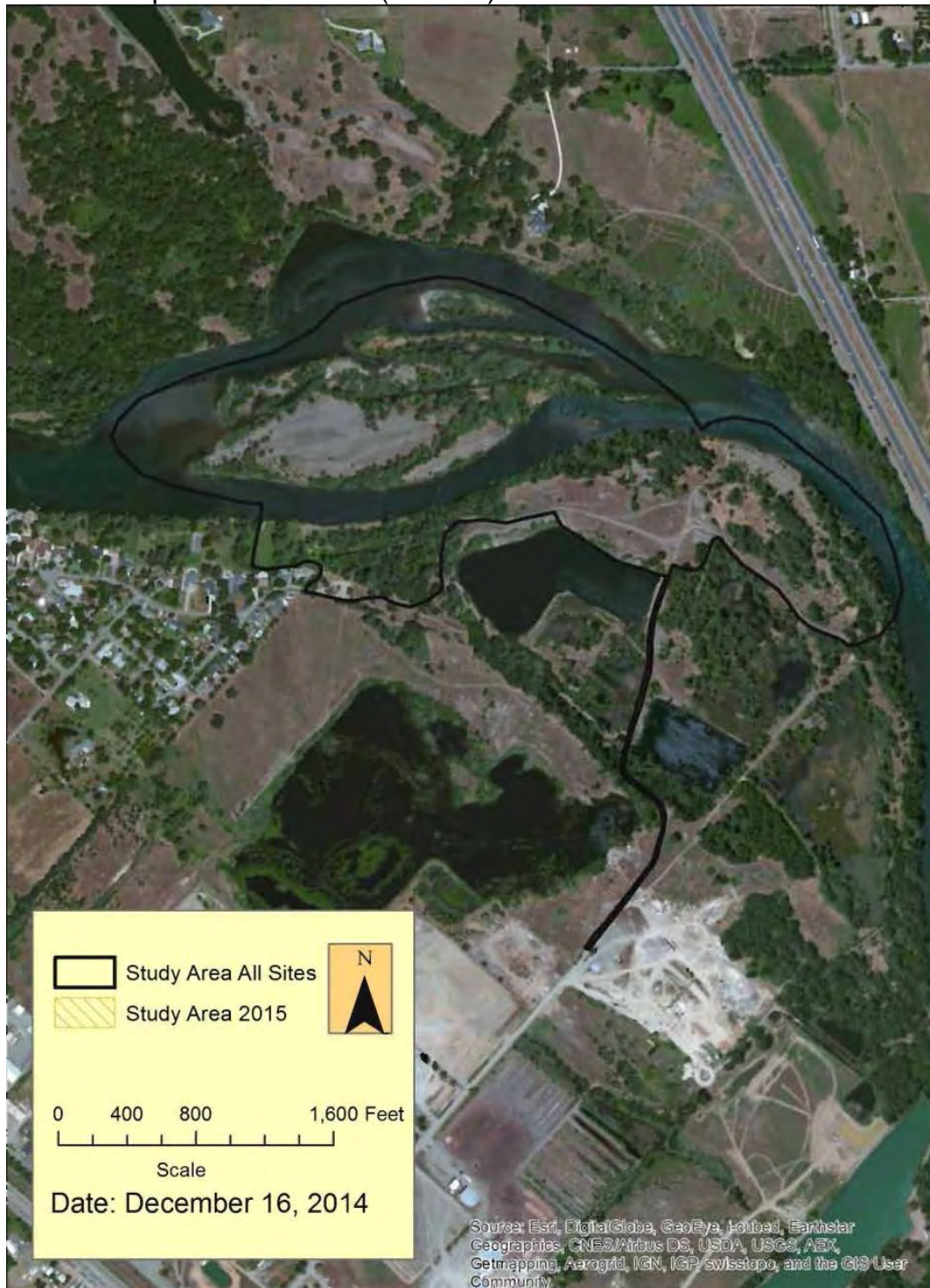


Figure A-24. Site 11– Kapusta Island (RM 288). Approximate location 122°20'29.44" W 40°29'51.07" N (Section 32, T31N, R4W MDM) in the USGS 7.5 Minute Cottonwood Quadrangle.



Figure A-25. Kapusta Island Area riparian vegetation on mainland area (river right).

Site 12– Anderson River Park (RM 282)

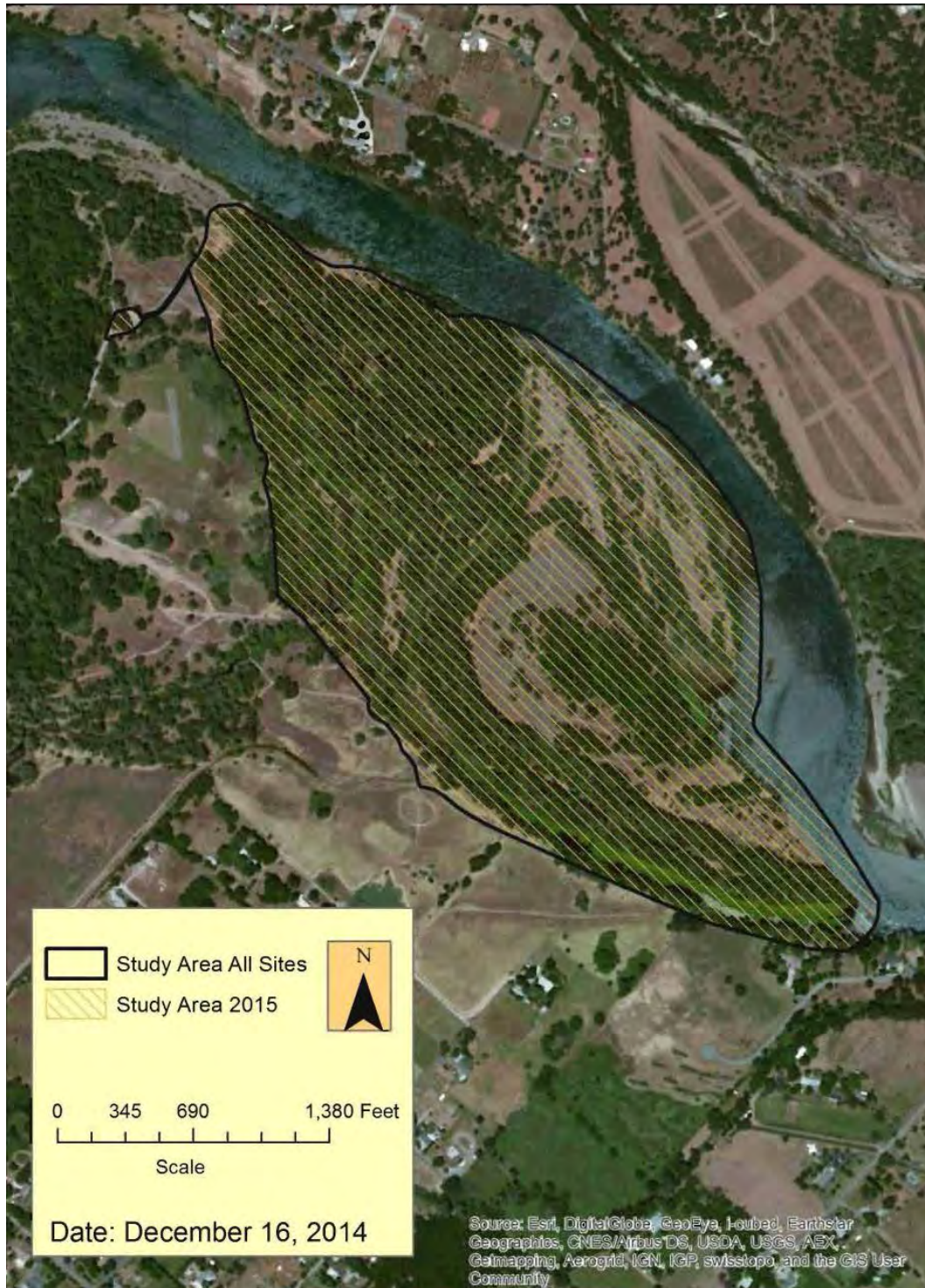


Figure A-26. Site 12 – Anderson Island (RM 282). Approximate location 122°15'37.76" W 40°27'54.12" N (Sections 12 and 13 T30N, R4W MDM) in the USGS 7.5 Minute Cottonwood Quadrangle.



Figure A-27. Anderson Park side channel backwater.



Figure A-28. Anderson Park side channel riparian vegetation.

Site 13– Reading Island (RM 275)



Figure A-29. Site 13 – Reading Island (RM 275). Approximate location 122°12'1.52" W 40°24'16.56" N (Section 33 and 34 T30N, R3W and Sections 3 and 4 T29N, R3W MDM) in the USGS 7.5 Minute Balls Ferry Quadrangle.



Figure A-30. Reading Island former boat ramp site.