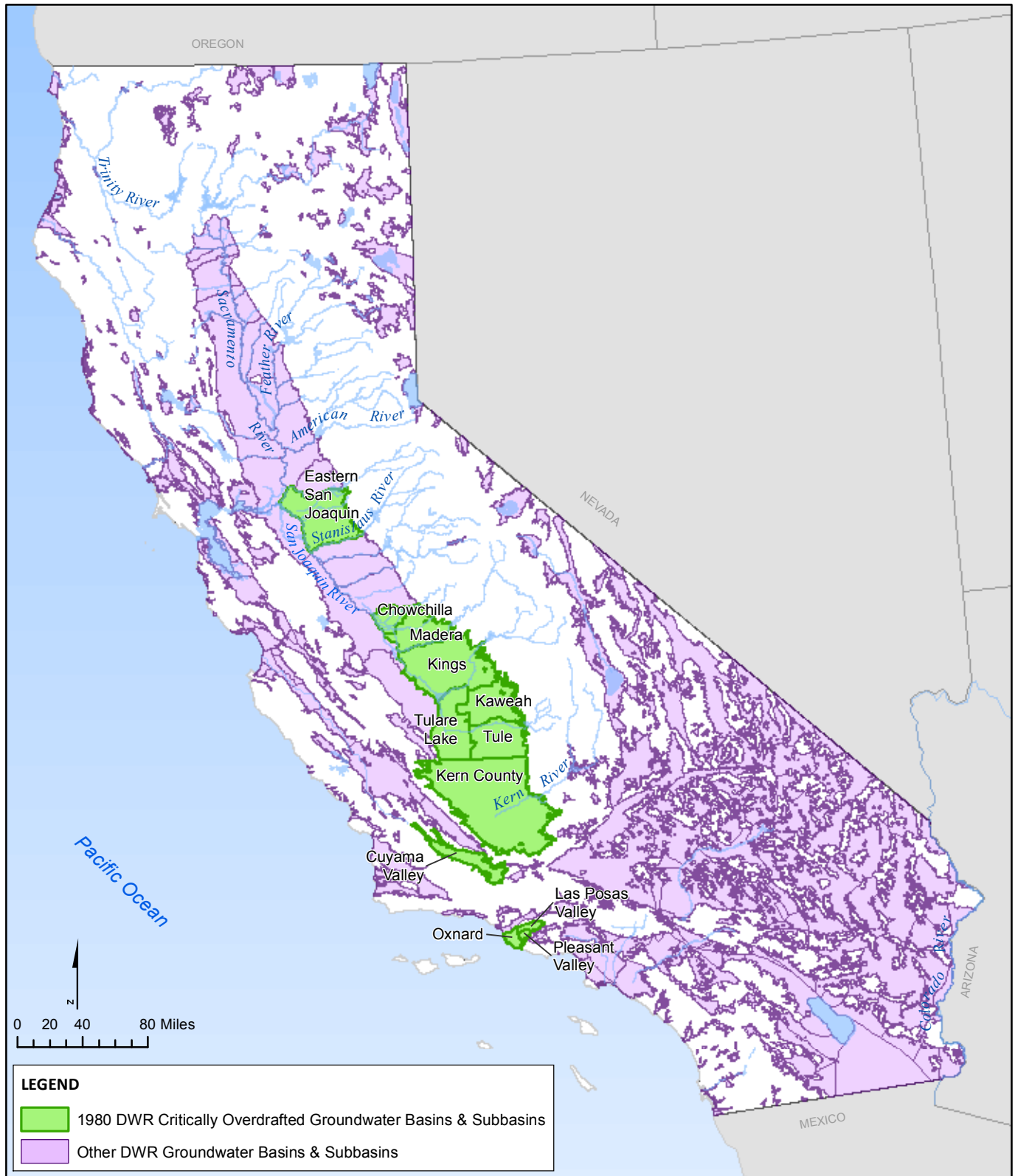
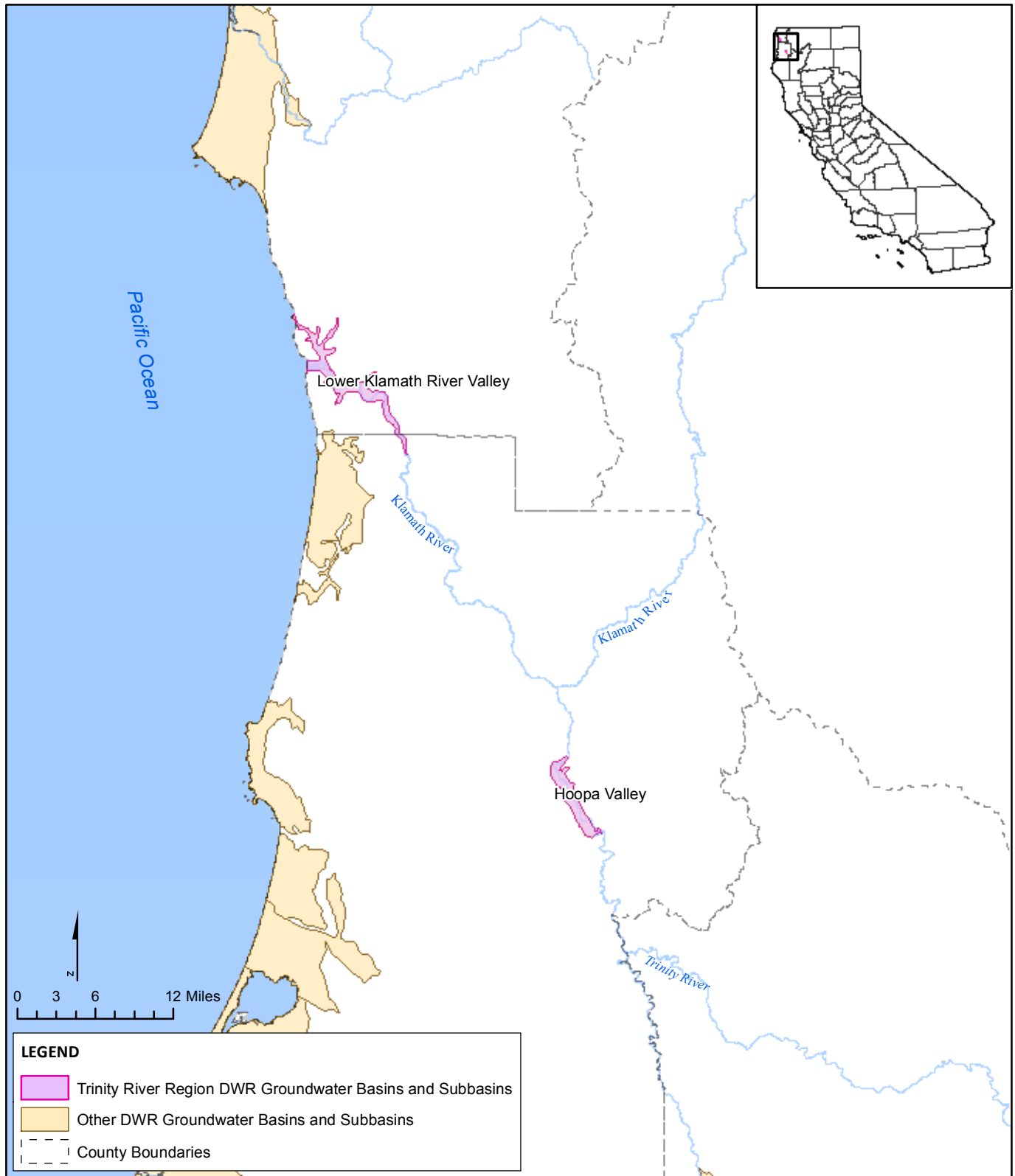


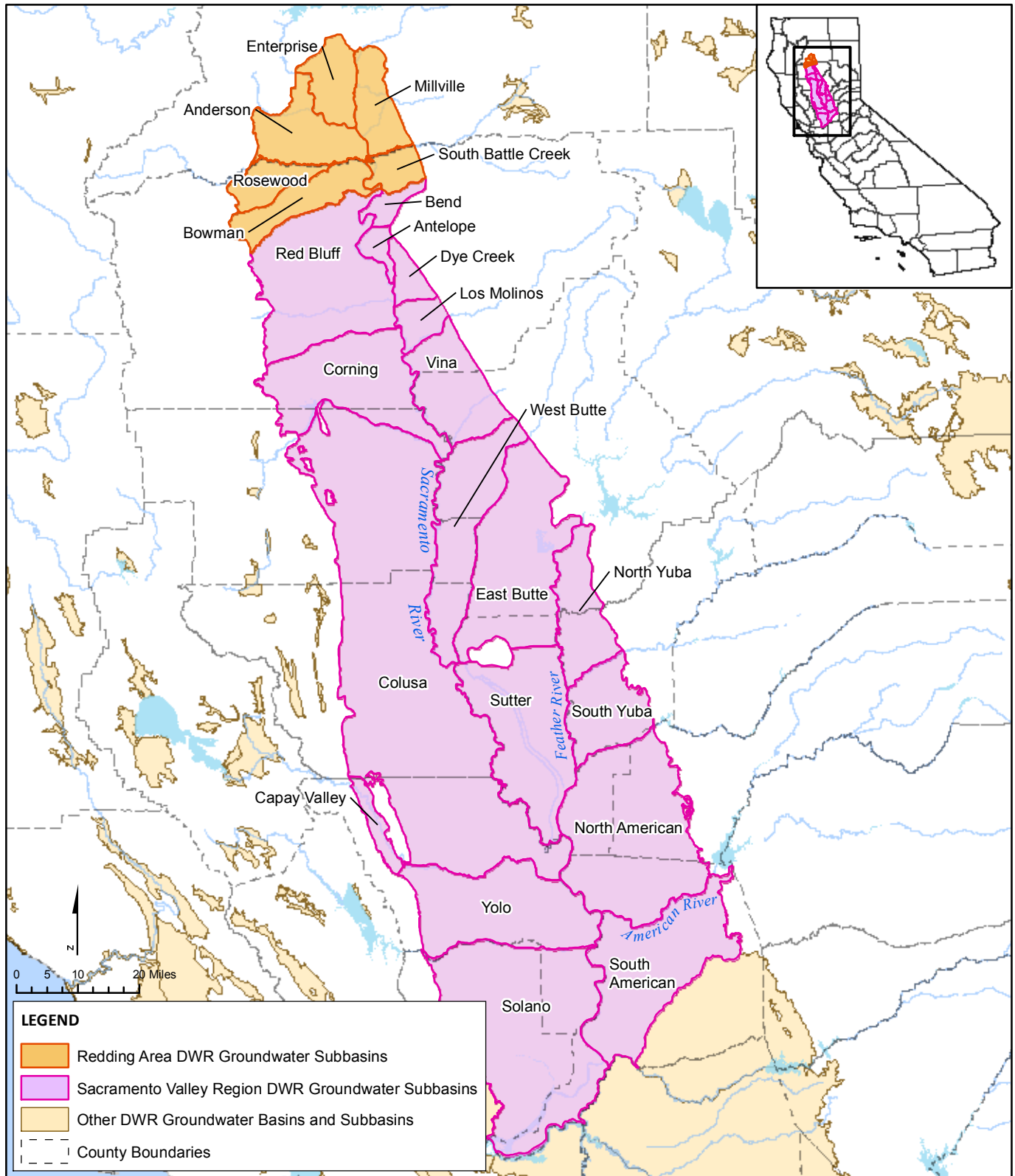
**Figure 7.1 California Groundwater Basins and Subbasins Defined in DWR Bulletin 118**



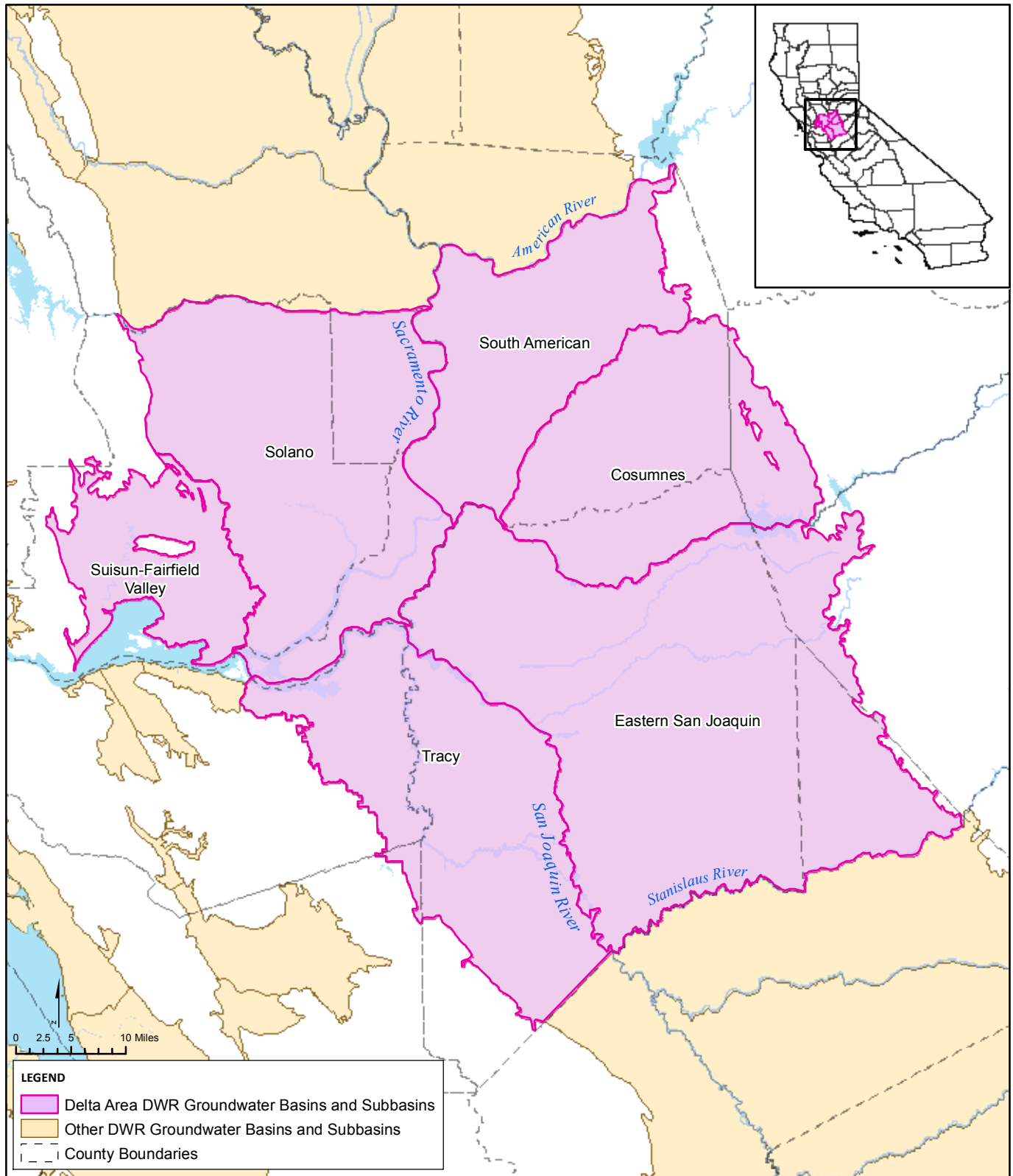
**Figure 7.2 Overdrafted Groundwater Basins Defined in DWR Bulletin 118**



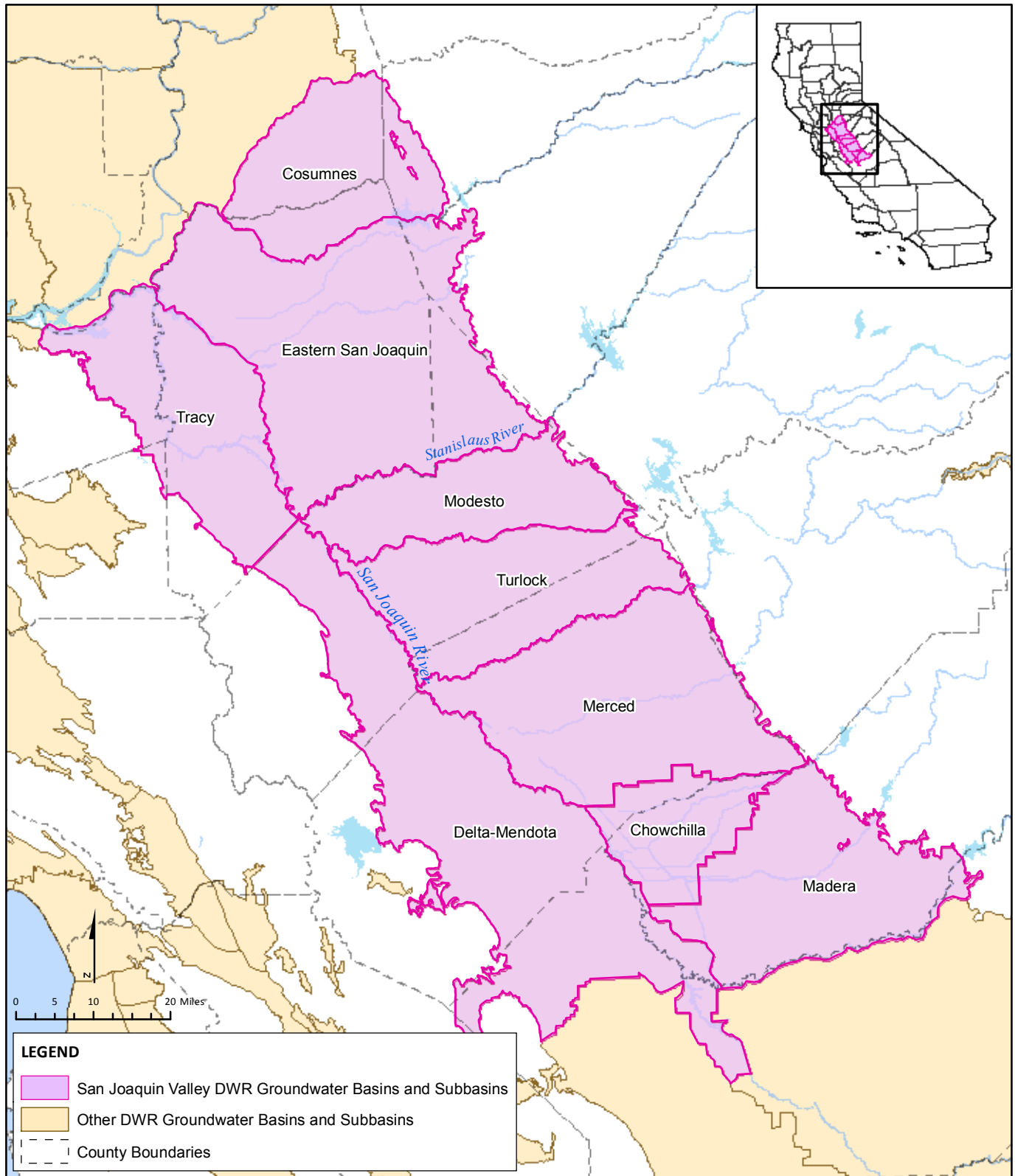
**Figure 7.3 North Coast Groundwater Basins Defined in DWR Bulletin 118**



**Figure 7.4 Sacramento Valley Groundwater Basin Defined in DWR Bulletin 118**

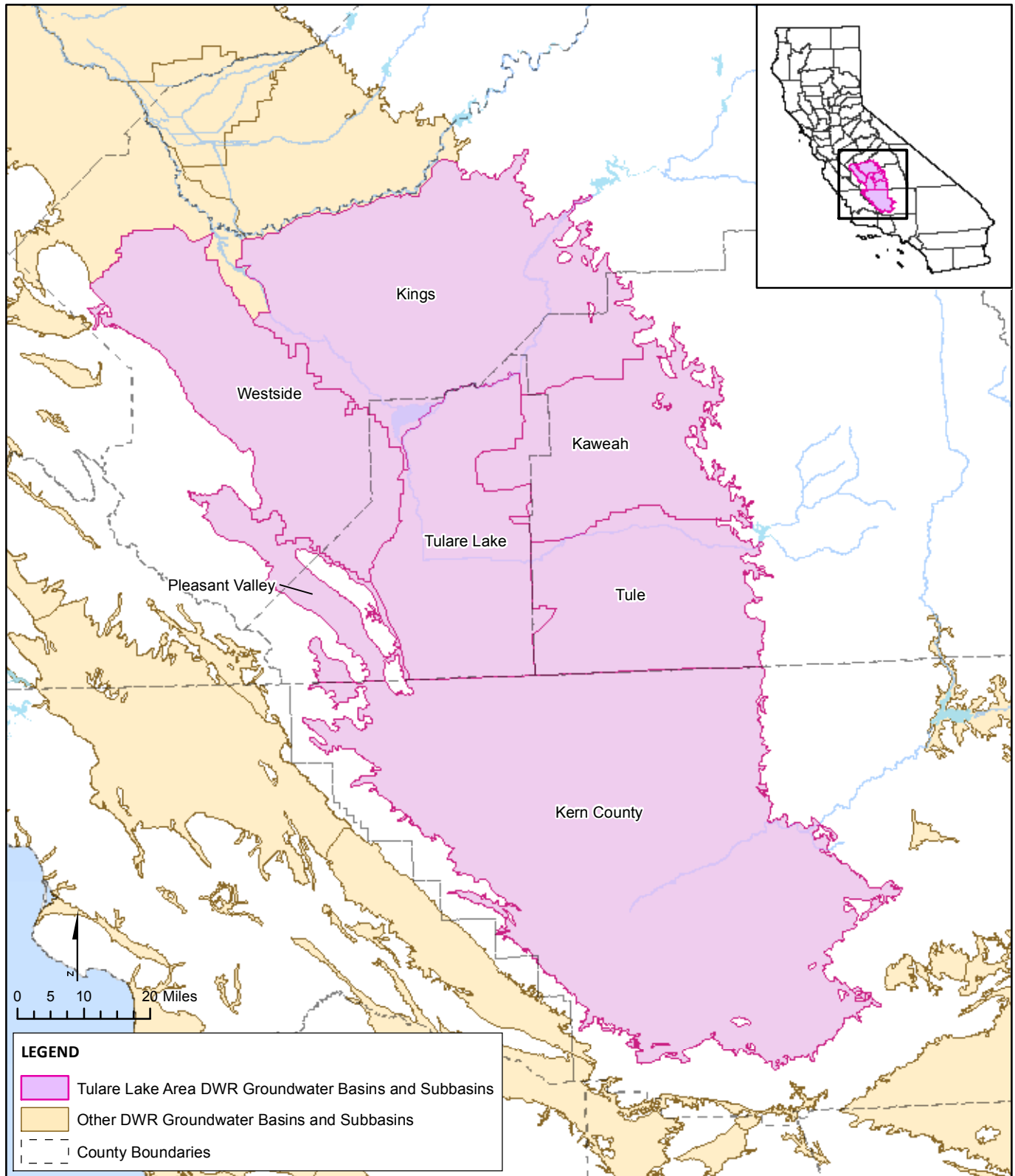


**Figure 7.5 Groundwater Subbasins in the Delta Area Defined in DWR Bulletin 118**

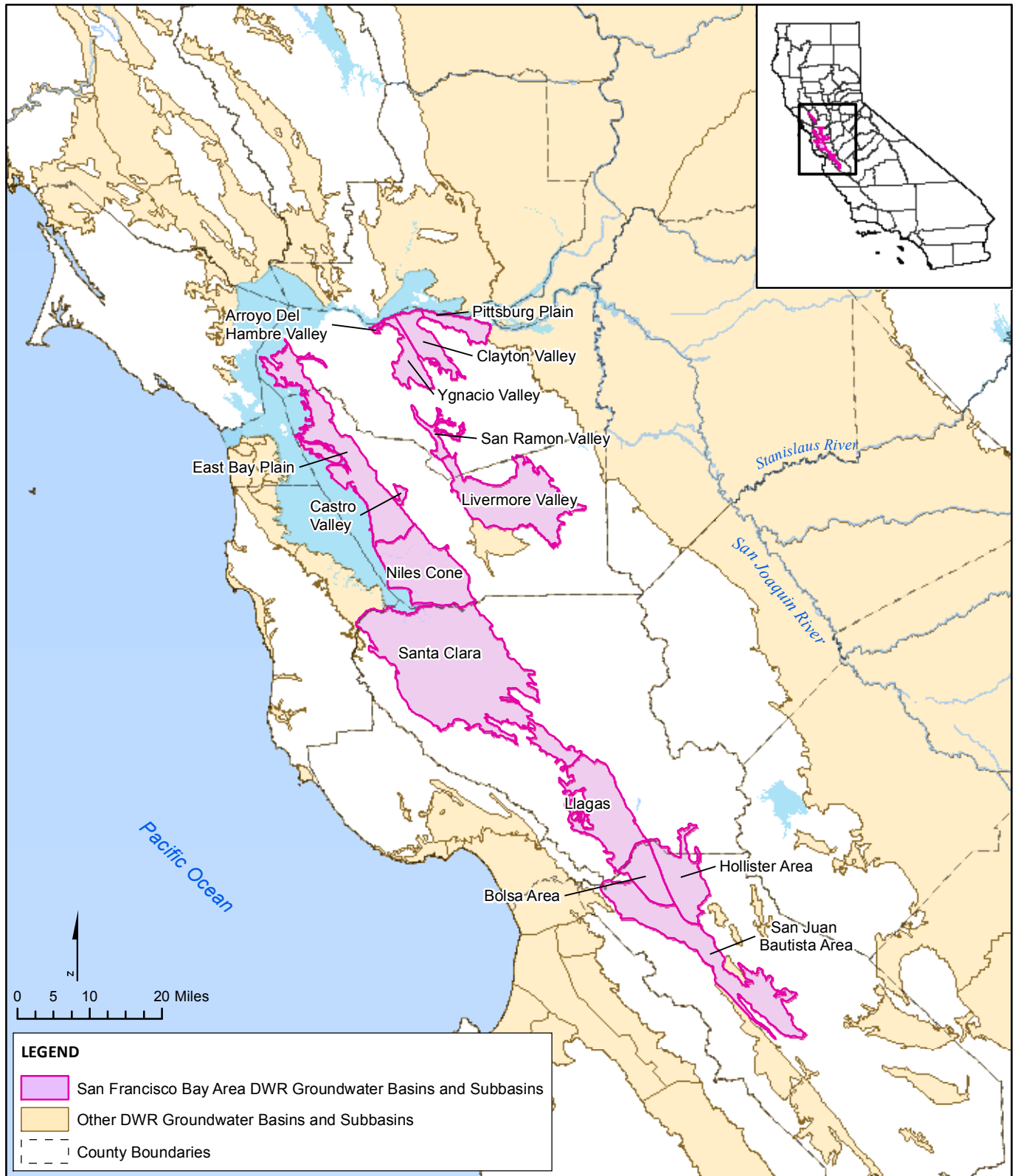


**Figure 7.6 San Joaquin Valley Region Groundwater Basin Defined in DWR Bulletin 118**





**Figure 7.7 Tulare Lake Area Groundwater Basin Defined in DWR Bulletin 118**



**Figure 7.8 San Francisco Bay Area Groundwater Basins Defined in DWR Bulletin 118**



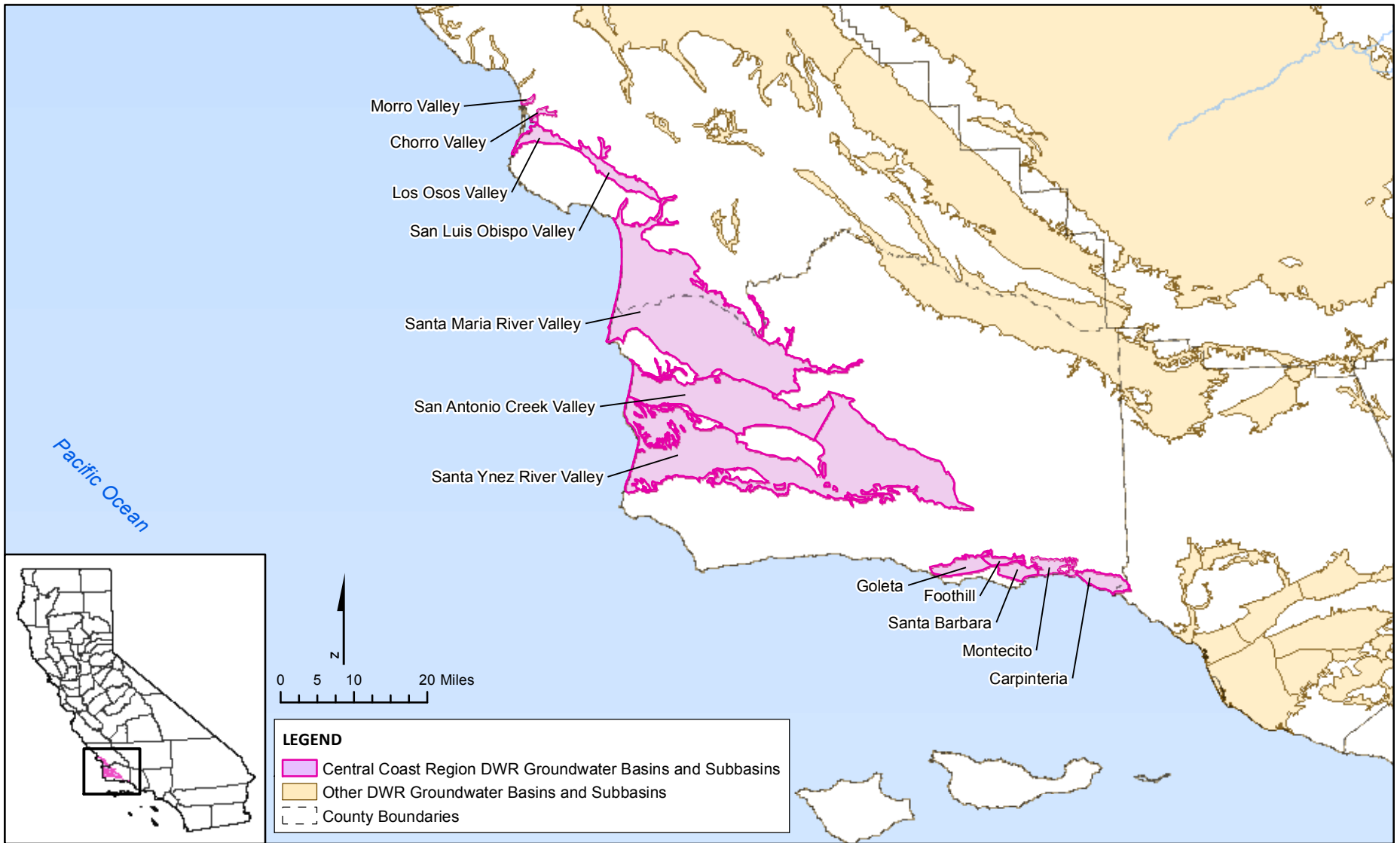


Figure 7.9 Central Coast Region Groundwater Basins defined in DWR Bulletin 118

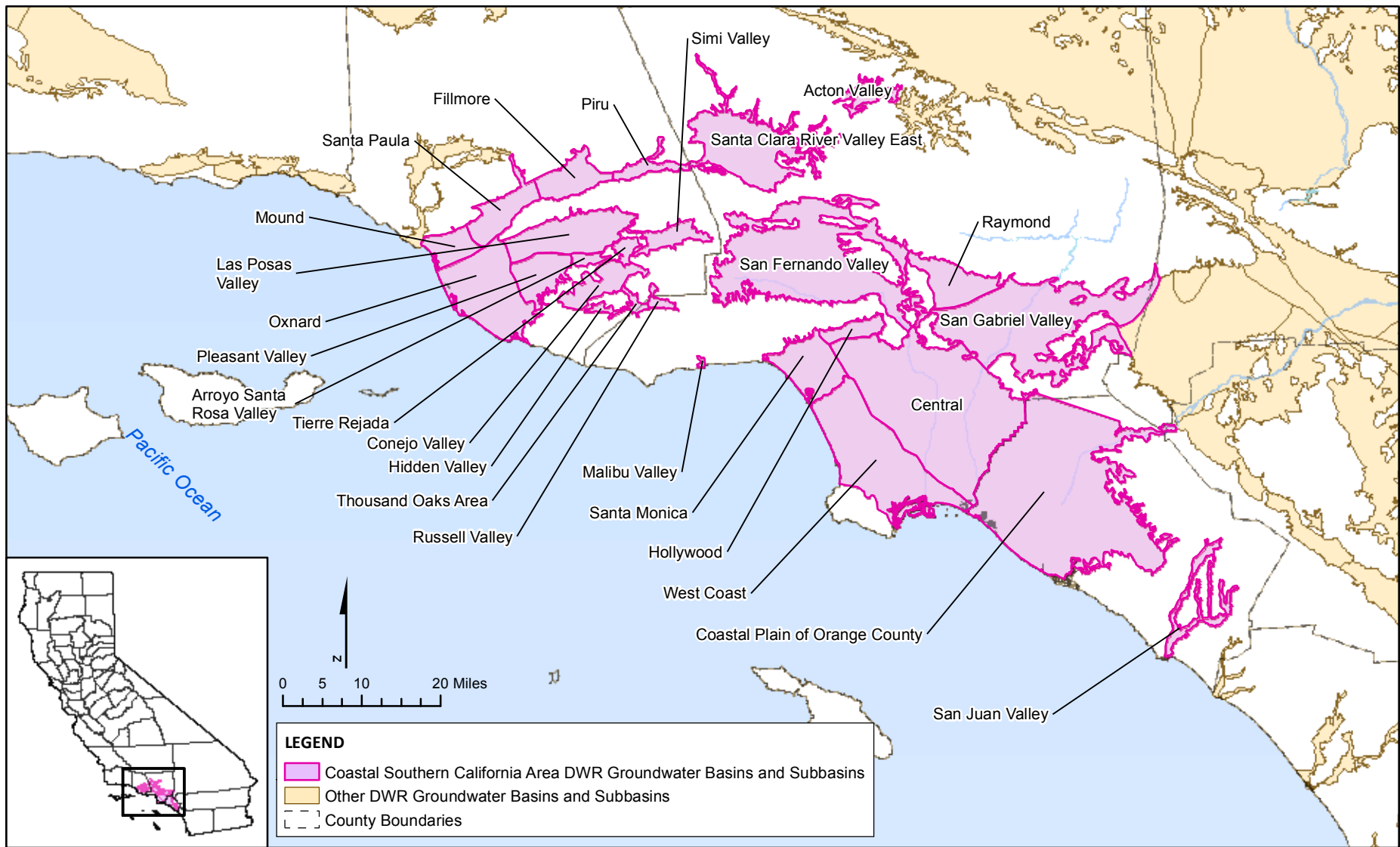


Figure 7.10 Coastal Southern California Area Groundwater Basins Defined in DWR Bulletin 118

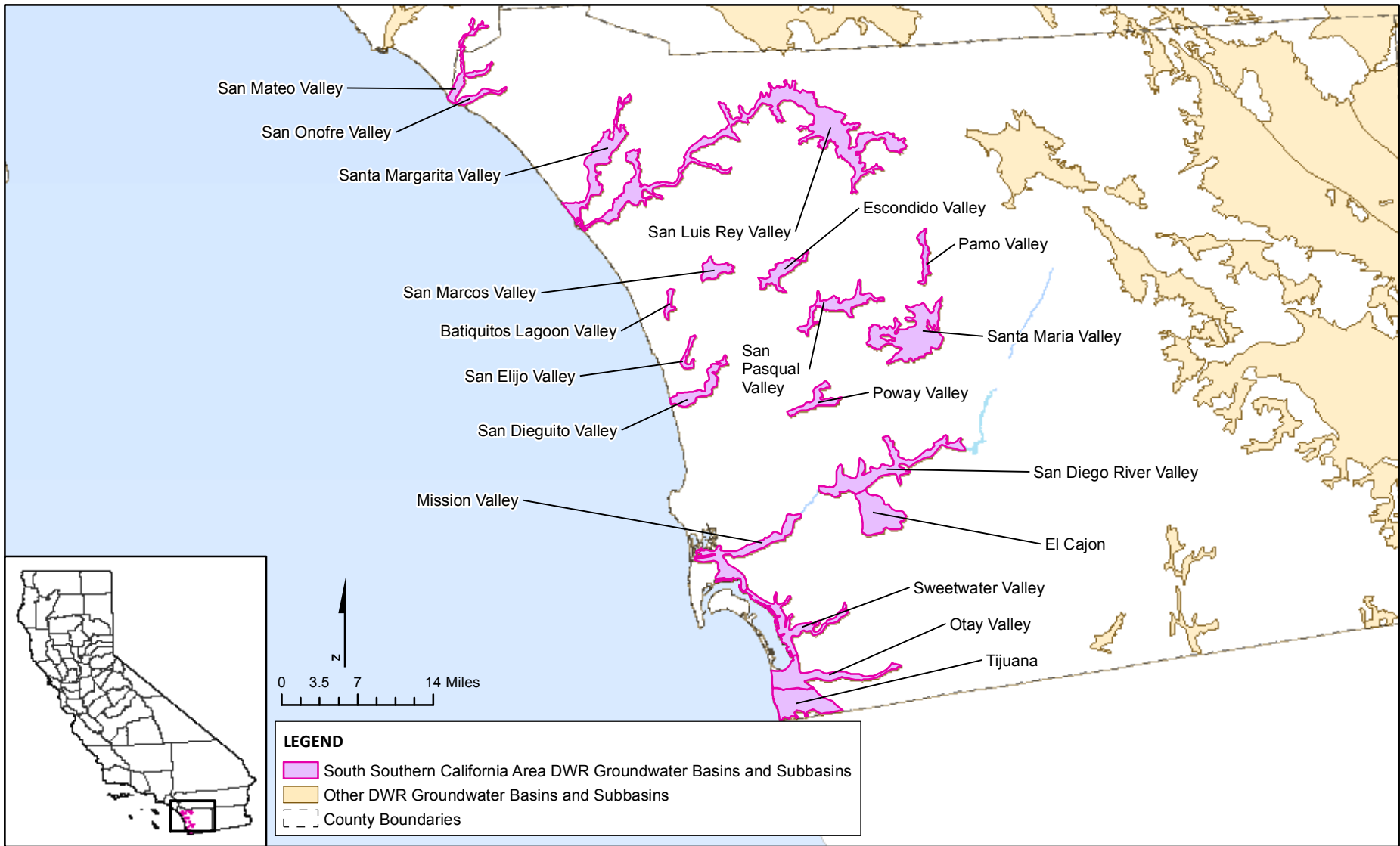


Figure 7.11 San Diego Area Groundwater Basins Defined in DWR Bulletin 118

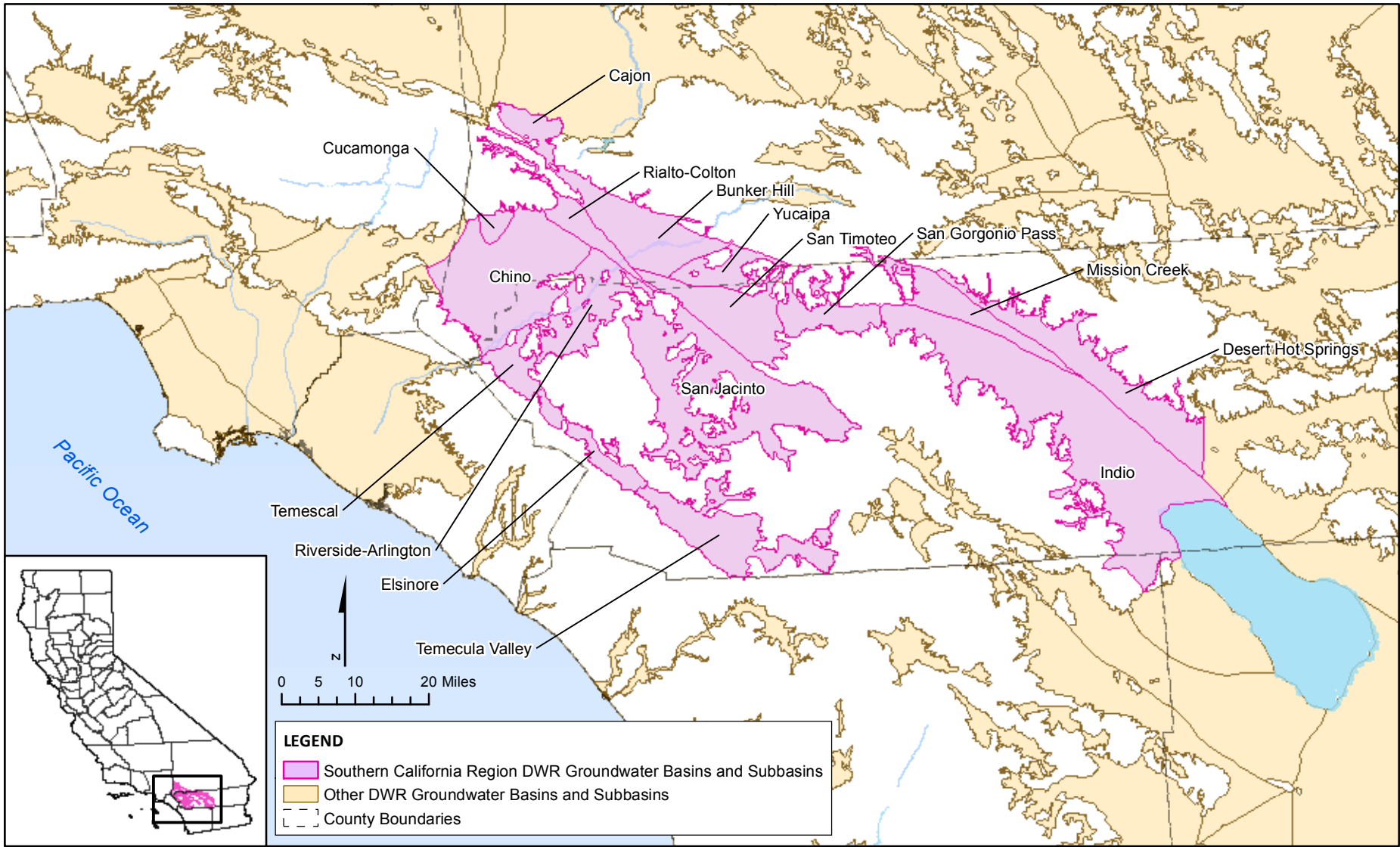


Figure 7.12 Southern California Region Groundwater Basins Defined in DWR Bulletin 118

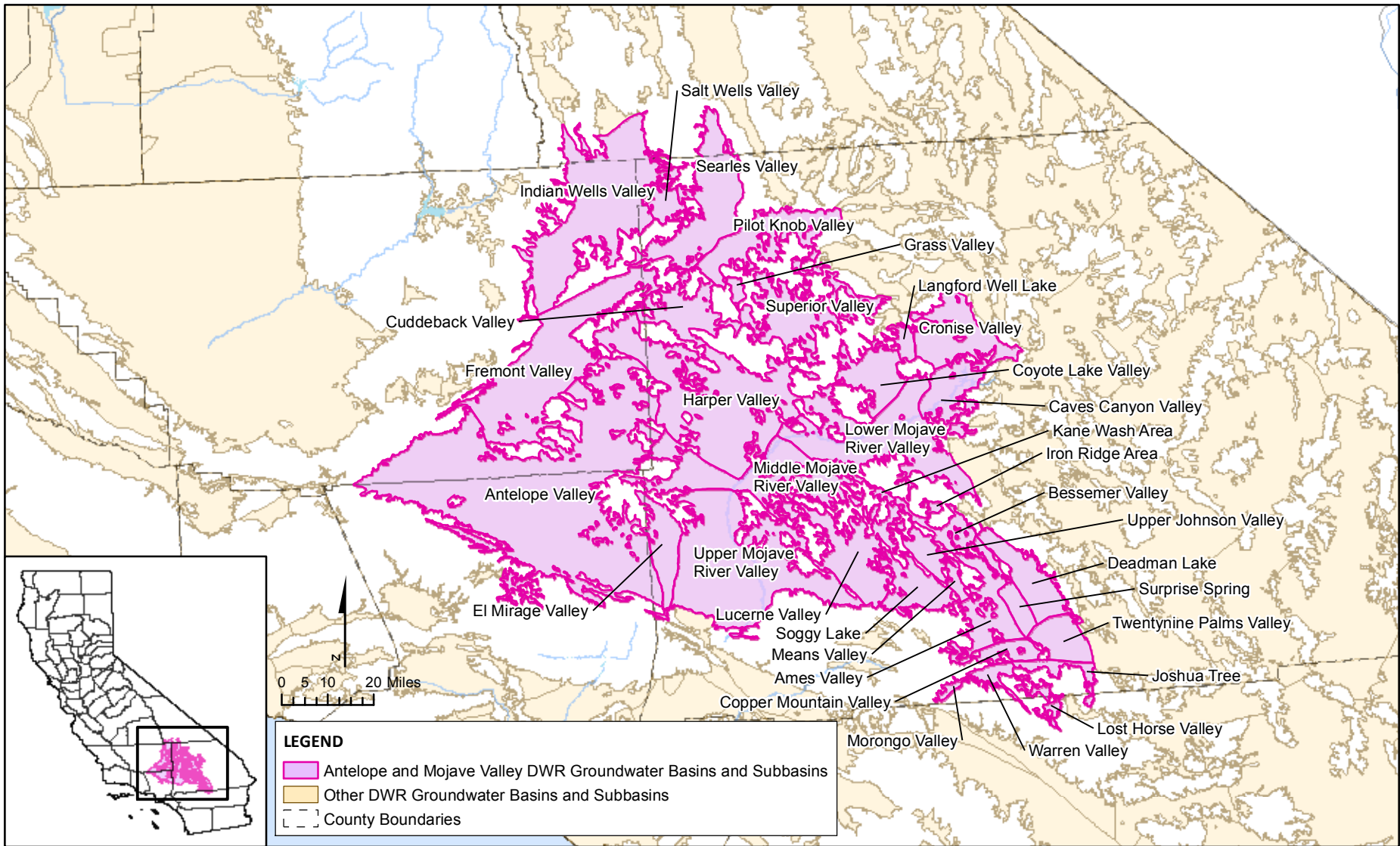


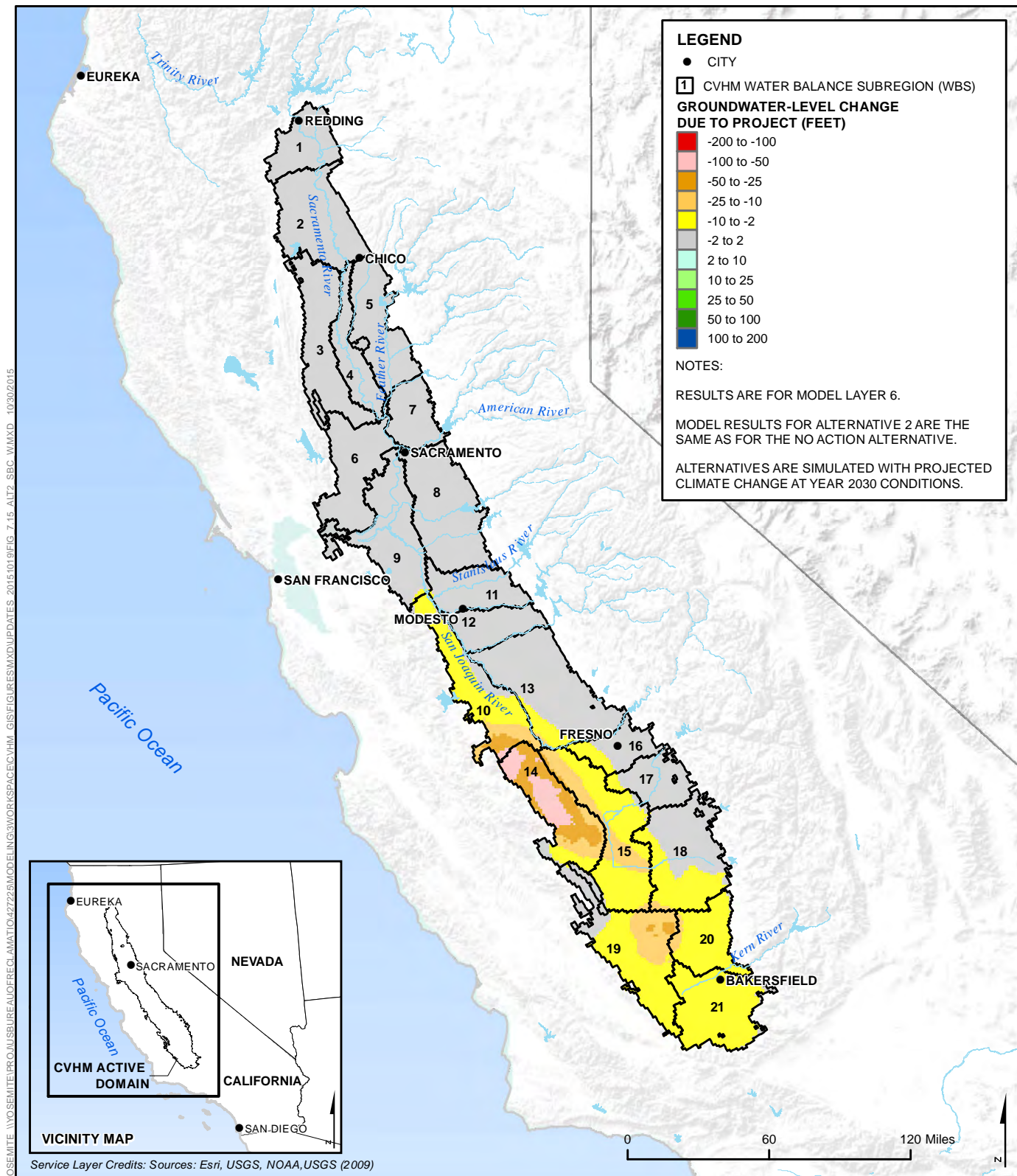
Figure 7.13 Antelope Valley and Mojave Valley Groundwater Basins Defined in DWR Bulletin 118



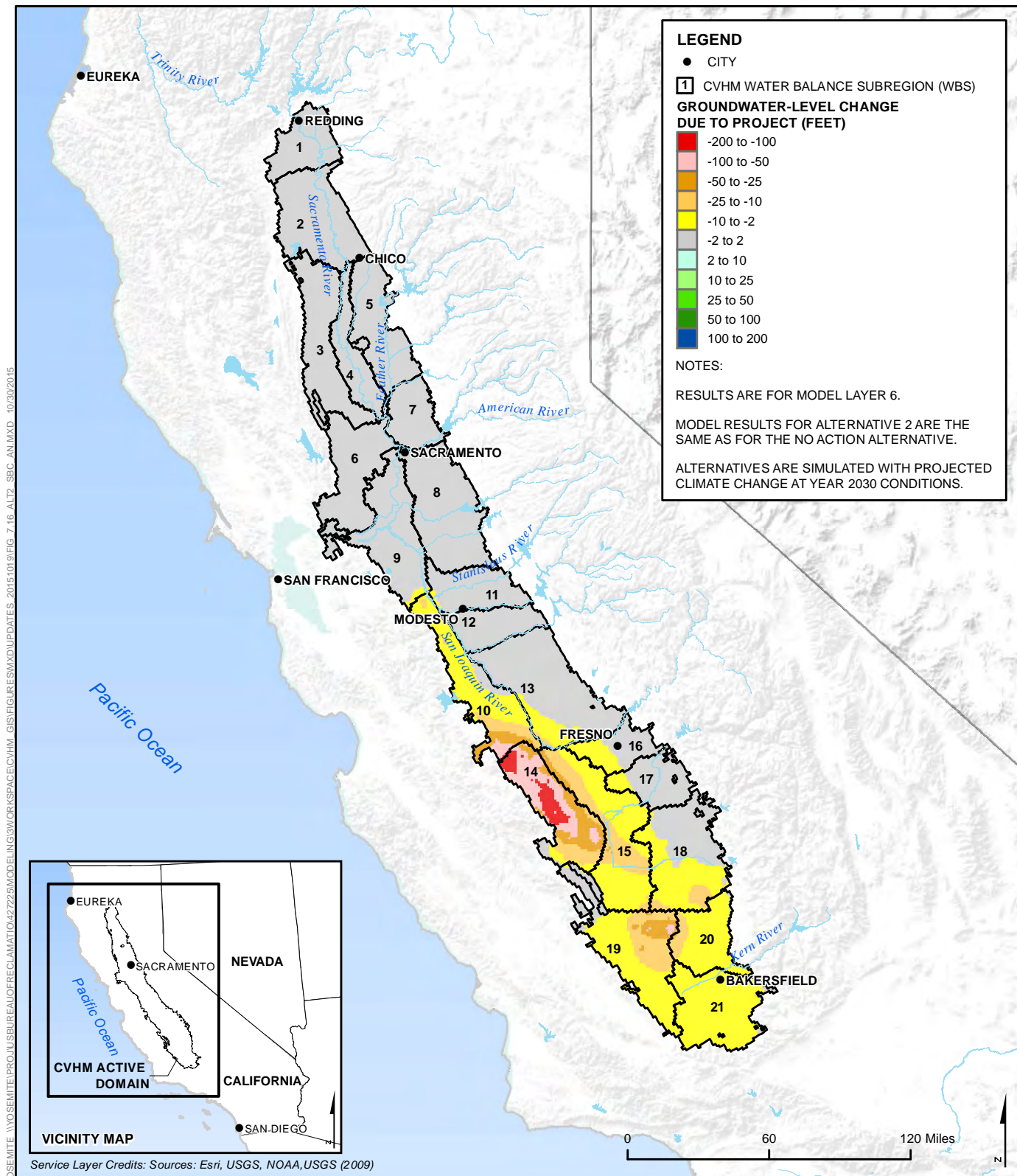


**Figure 7.14 Groundwater Model Domain and Water Balance Subregions in the Central Valley**



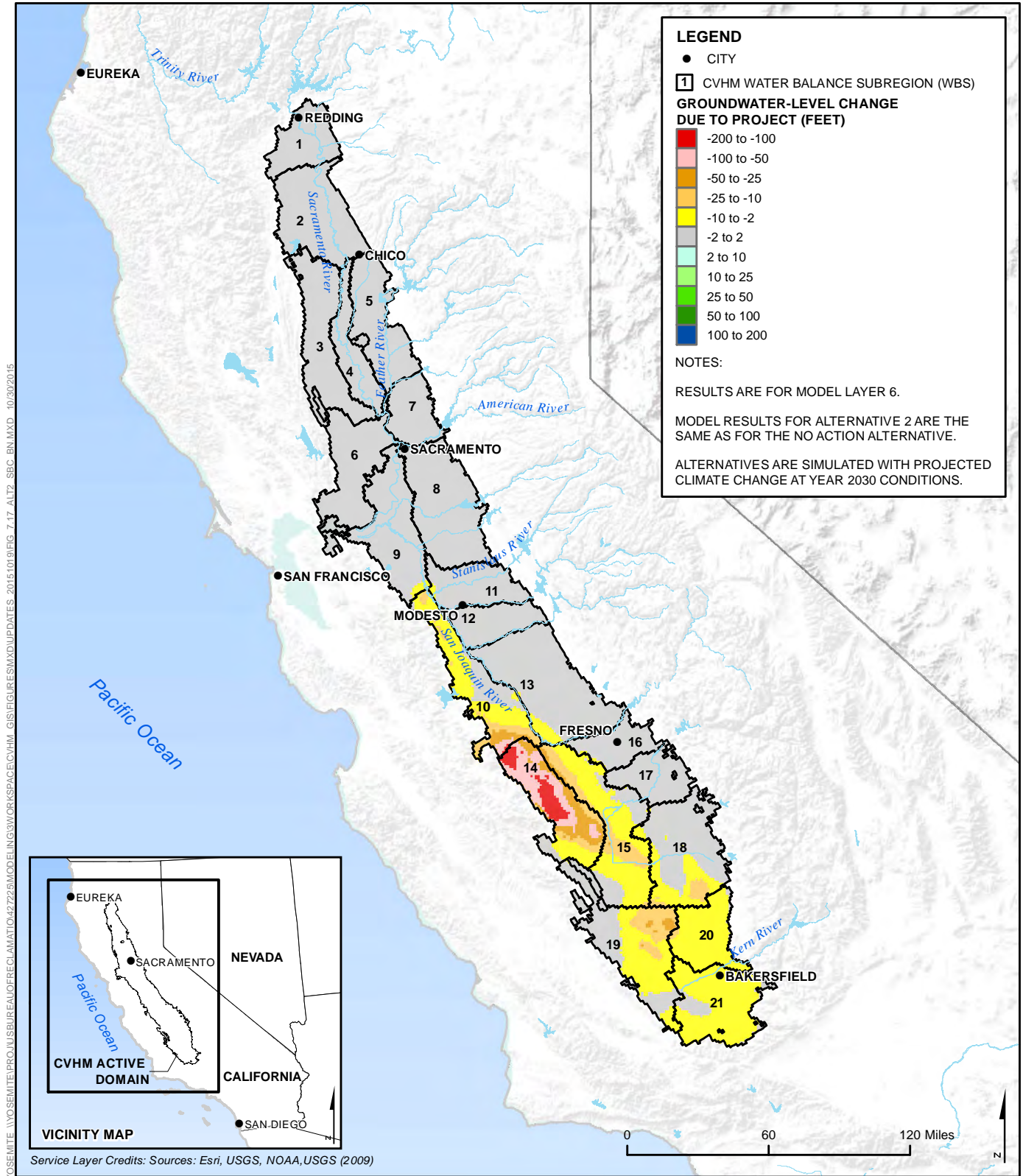


**Figure 7.15 Forecast Groundwater-Level Changes for Alternative 2 and No Action Alternative Compared to Second Basis of Comparison for Average July in a Future Wet Year**

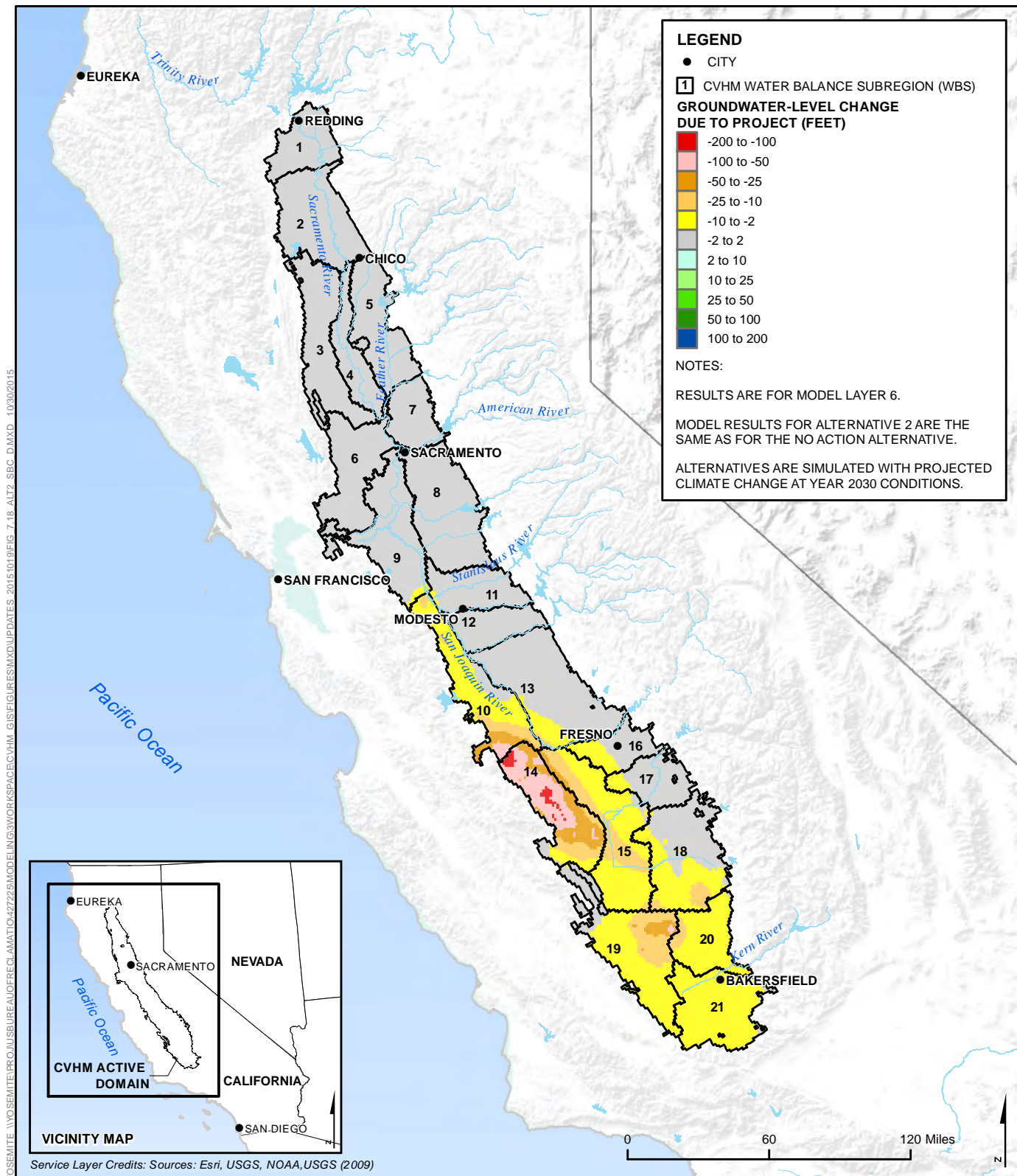


**Figure 7.16 Forecast Groundwater-Level Changes for Alternative 2 and No Action Alternative Compared to Second Basis of Comparison for Average July in a Future Above-Normal Year**



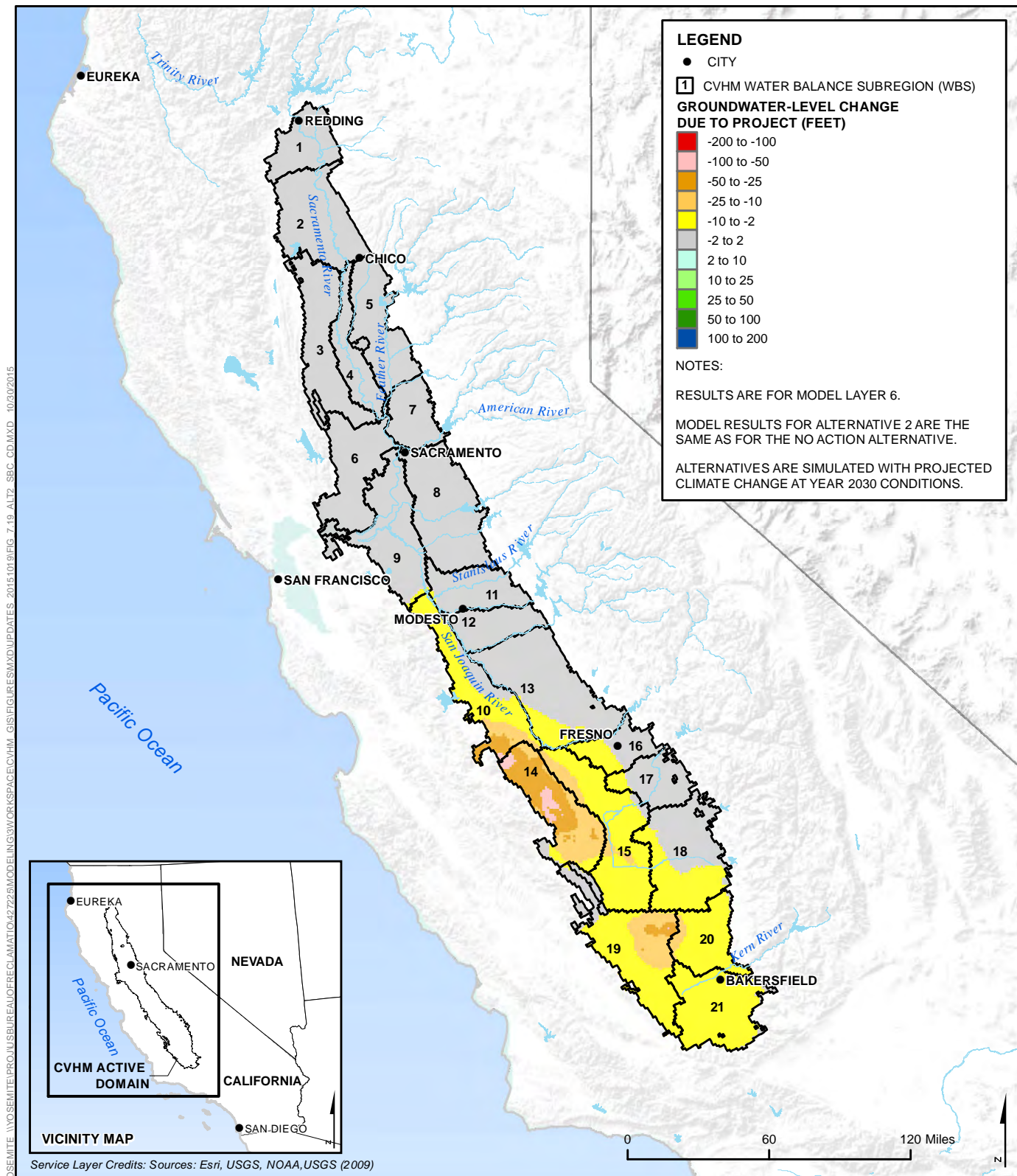


**Figure 7.17 Forecast Groundwater-Level Changes for Alternative 2 and No Action Alternative Compared to Second Basis of Comparison for Average July in a Future Below-Normal Year**



**Figure 7.18 Forecast Groundwater-Level Changes for Alternative 2 and No Action Alternative Compared to Second Basis of Comparison for Average July in a Future Dry Year**

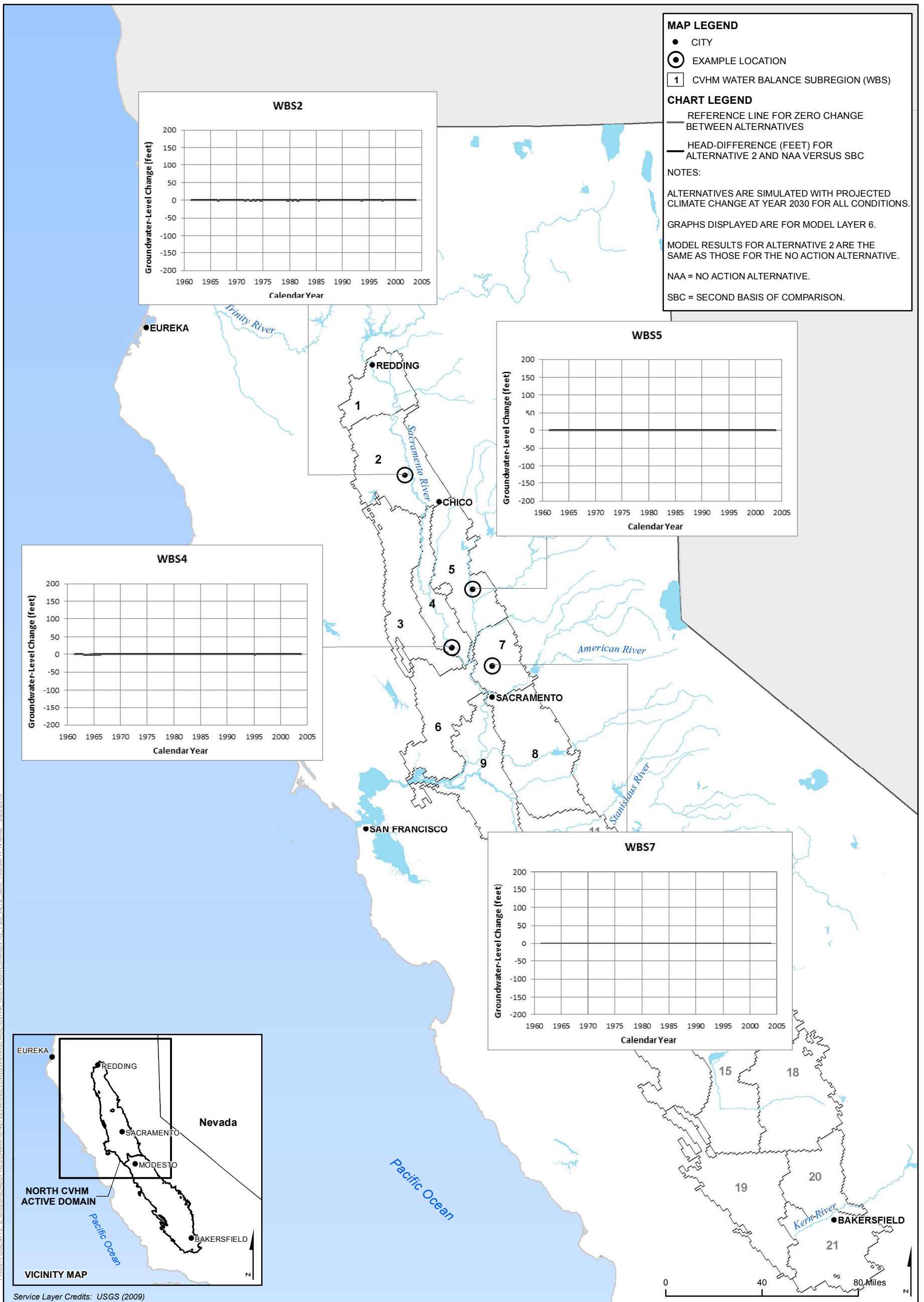




**Figure 7.19 Forecast Groundwater-Level Changes for Alternative 2 and No Action Alternative Compared to Second Basis of Comparison for Average July in a Future Critically-Dry Year**

This page left blank intentionally.





**Figure 7.20 Forecast Groundwater-Level Change Hydrographs for Alternative 2 and No Action Alternative Compared to Second Basis of Comparison at Example Locations in the Sacramento Valley**

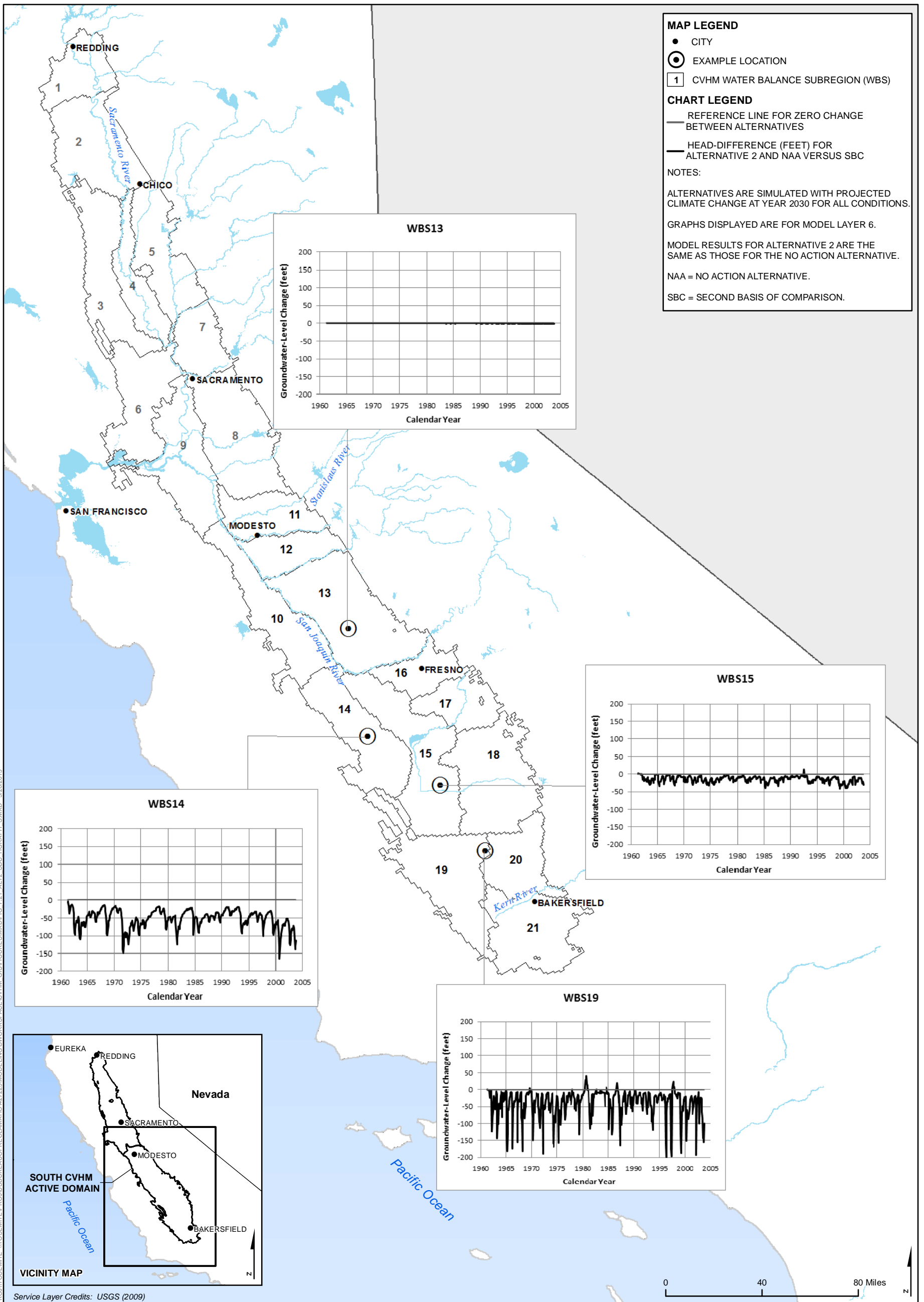


Figure 7.21 Forecast Groundwater-Level Change Hydrographs for Alternative 2 and No Action Alternative Compared to Second Basis of Comparison at Example Locations in the San Joaquin Valley

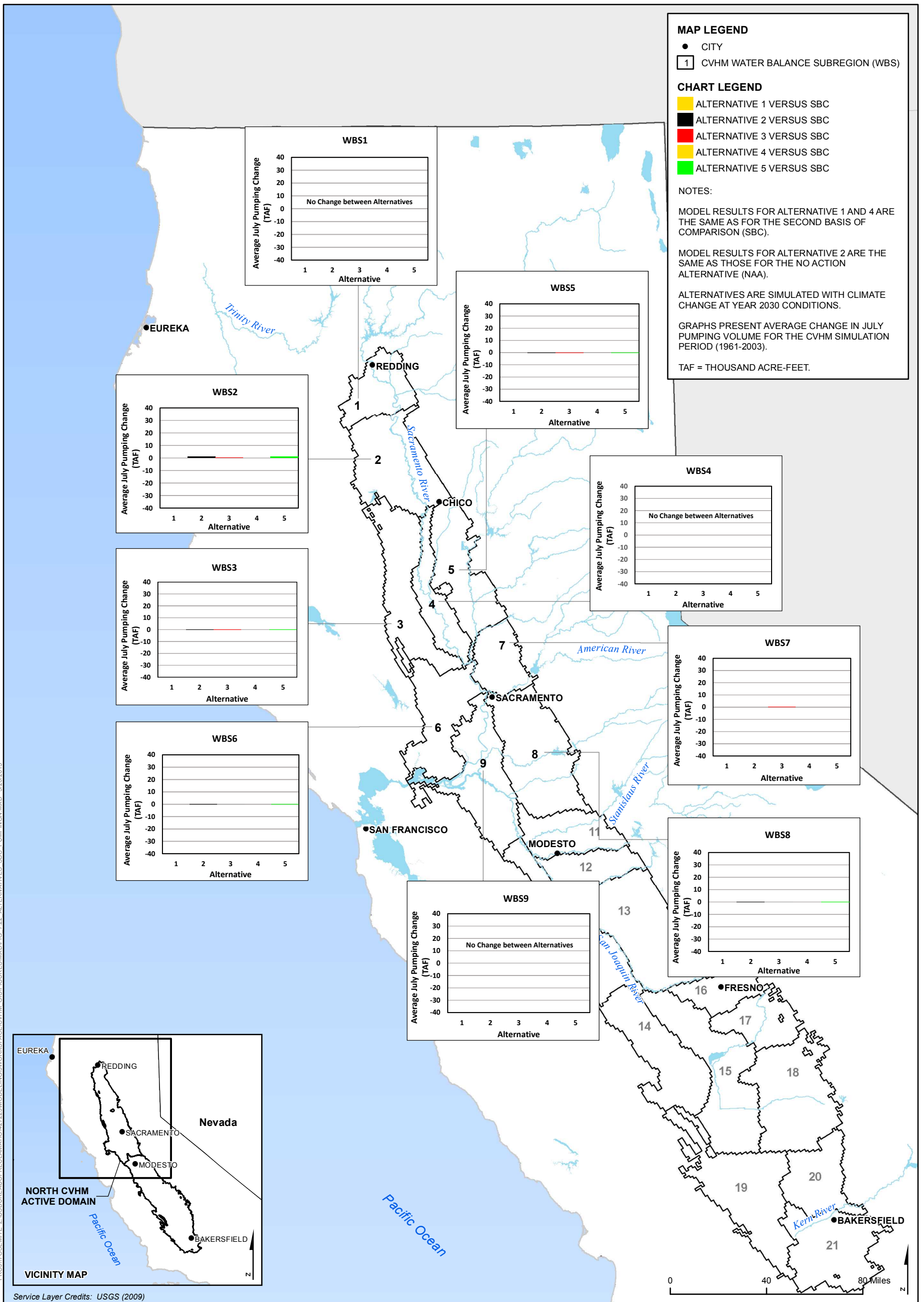


Figure 7.22 Long-term Average Change in July Agricultural Groundwater Pumping for Alternatives Compared to the Second Basis of Comparison in the Sacramento Valley



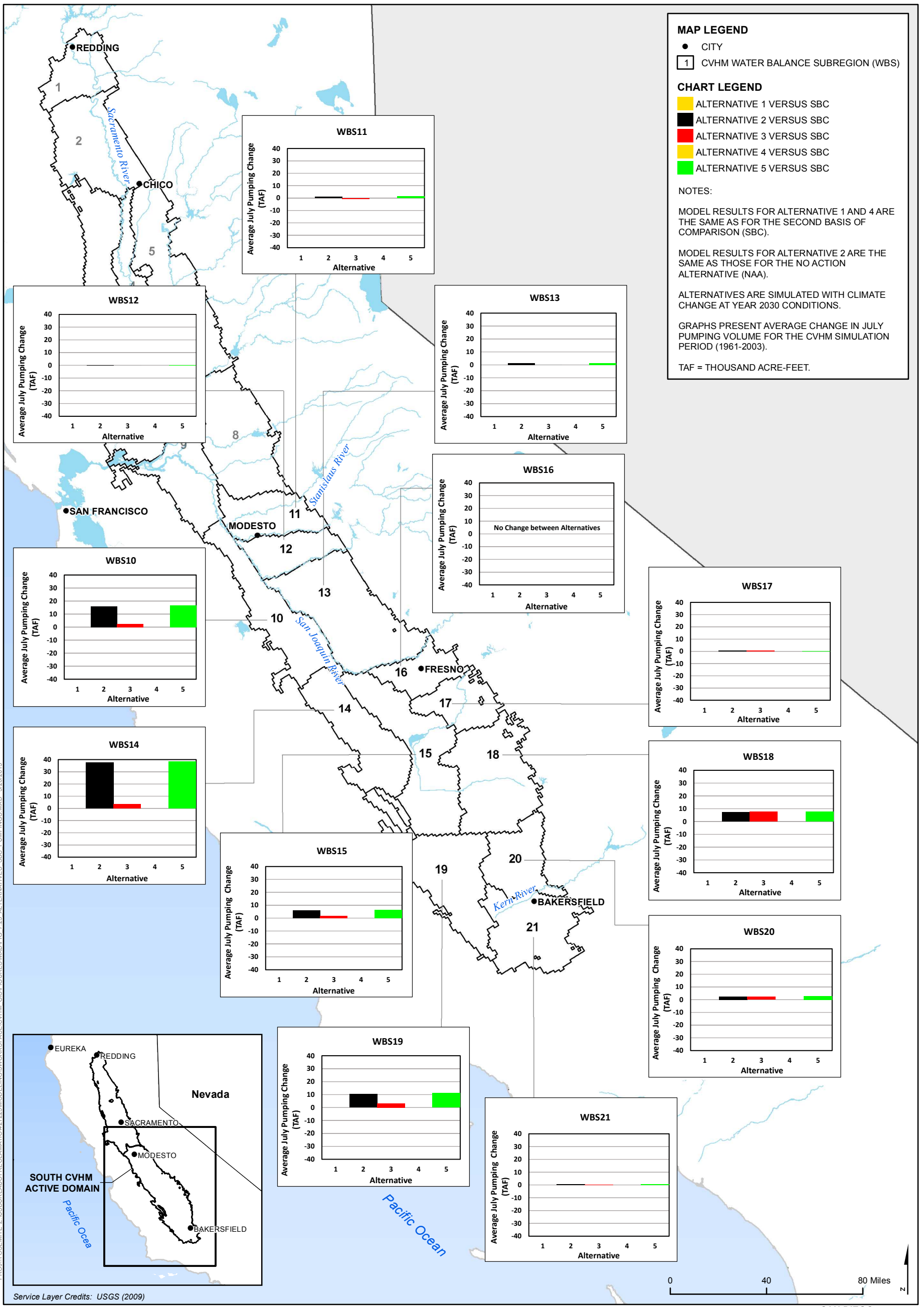
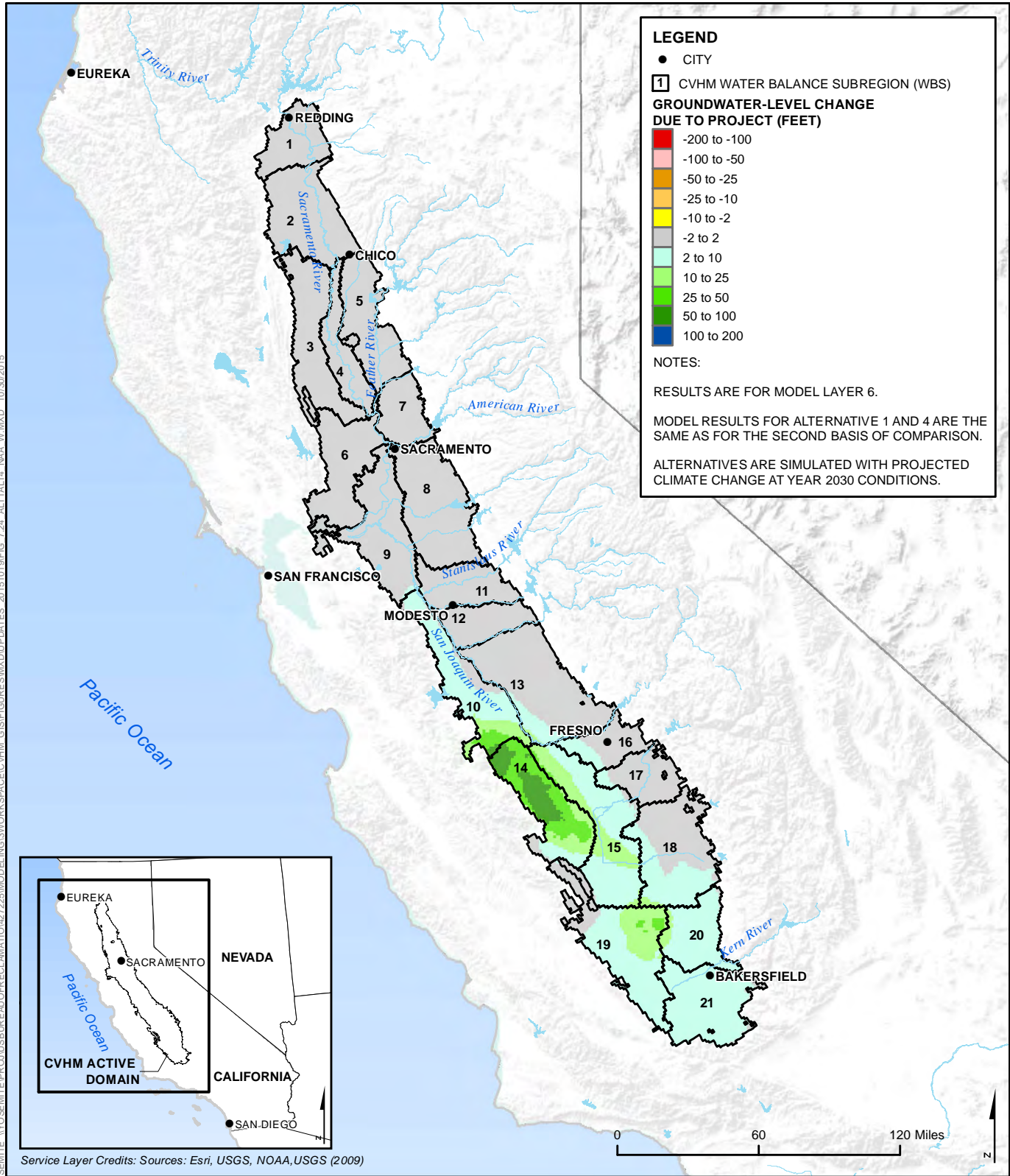
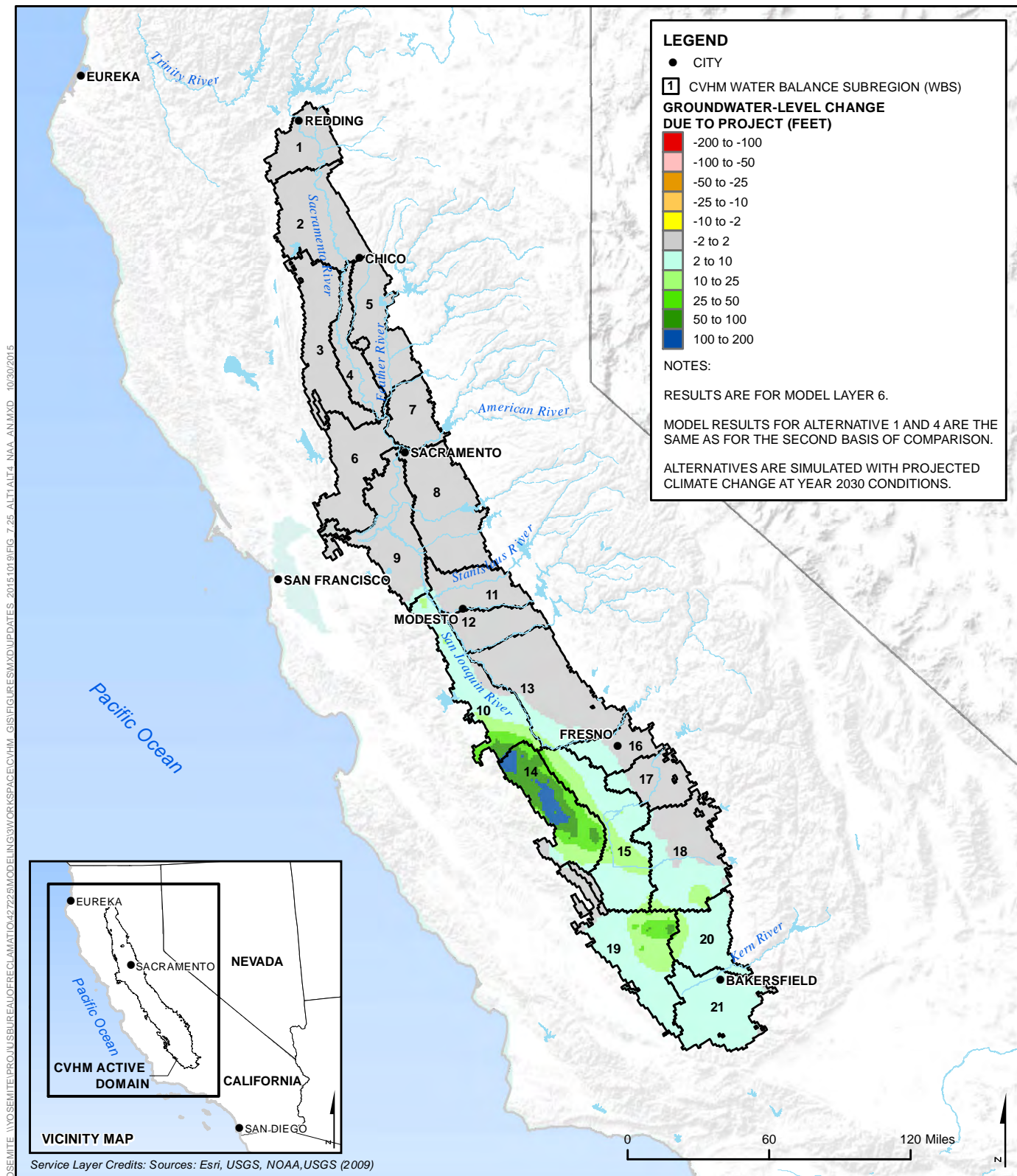


Figure 7.23 Long-term Average Change in July Agricultural Groundwater Pumping for Alternatives Compared to the Second Basis of Comparison in the San Joaquin Valley



**Figure 7.24 Forecast Groundwater-Level Changes for Alternative 1, Alternative 4, and Second Basis of Comparison Compared to No Action Alternative For Average July in a Future Wet Year**



**Figure 7.25 Forecast Groundwater-Level Changes for Alternative 1, Alternative 4, and Second Basis of Comparison Compared to No Action Alternative for Average July in a Future Above-Normal Year**