

Figure 7.26 Forecast Groundwater-Level Changes for Alternative 1, Alternative 4, and Second Basis of Comparison Compared to No Action Alternative For Average July in a Future Below-Normal Year

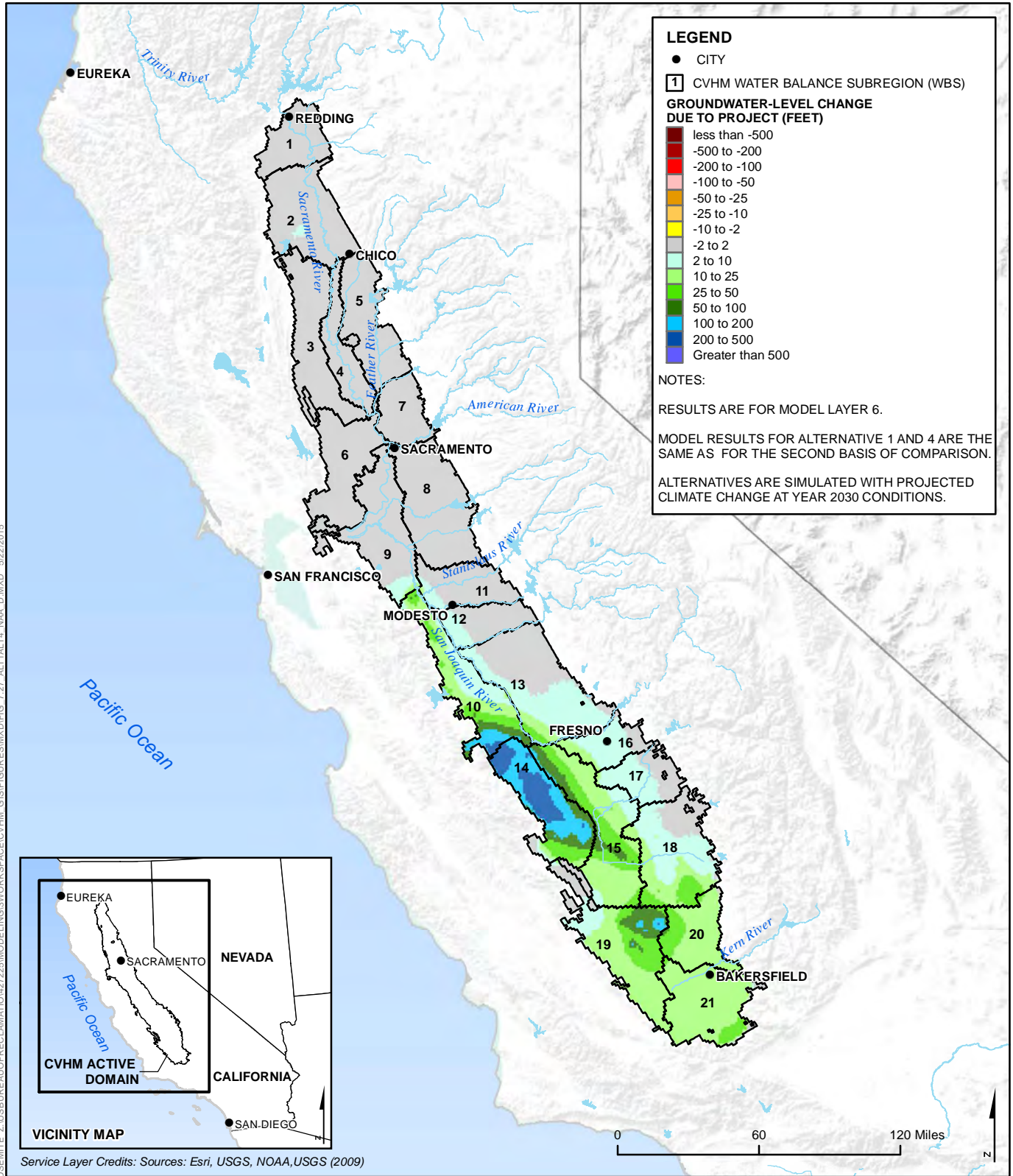


Figure 7.27 Forecast Groundwater-Level Changes for Alternative 1, Alternative 4, and Second Basis of Comparison Compared to No Action Alternative For Average July in a Future Dry Year

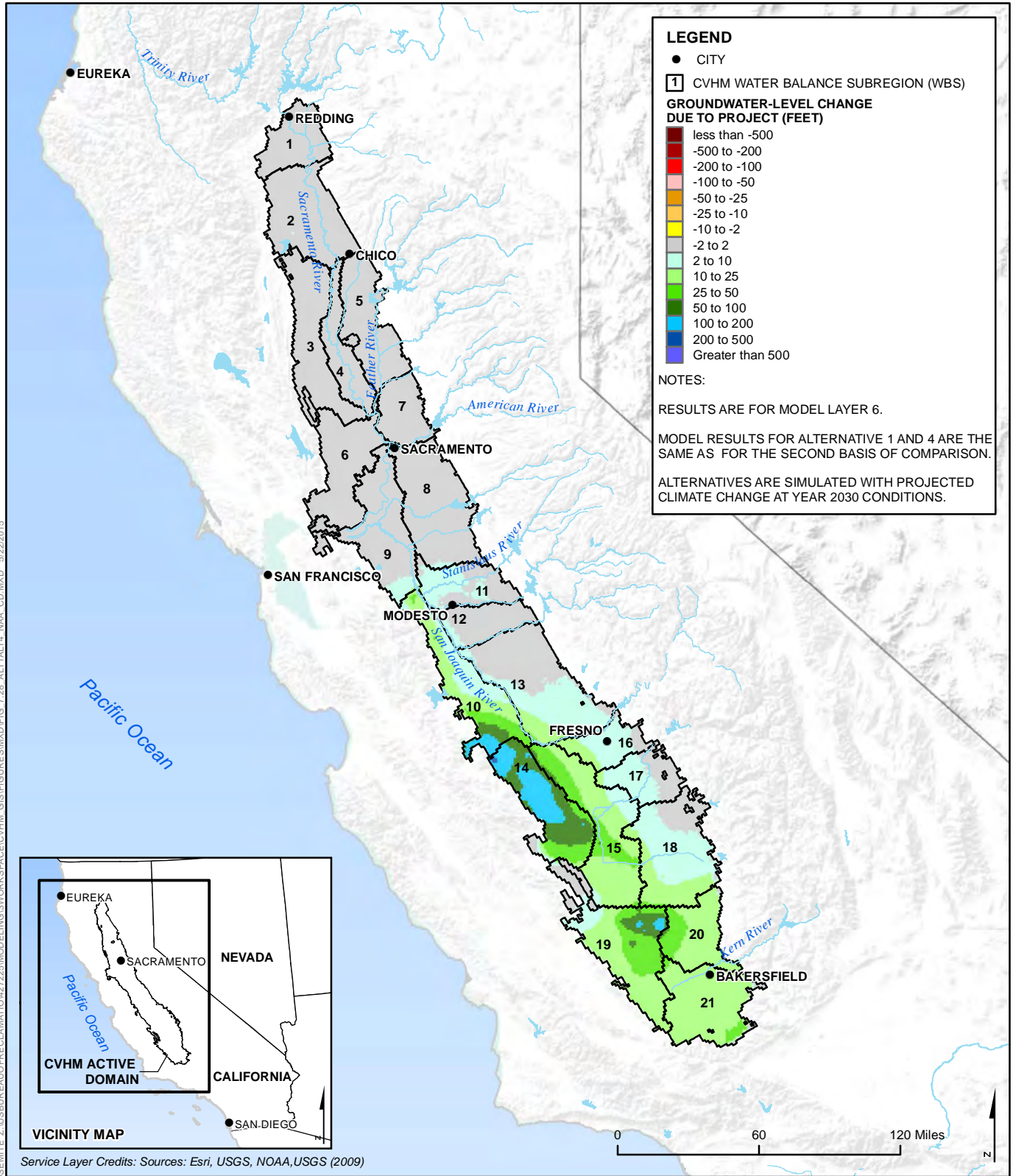


Figure 7.28 Forecast Groundwater-Level Changes for Alternative 1, Alternative 4, and Second Basis of Comparison Compared to No Action Alternative For Average July in a Future Critically-Dry Year

This page left blank intentionally.

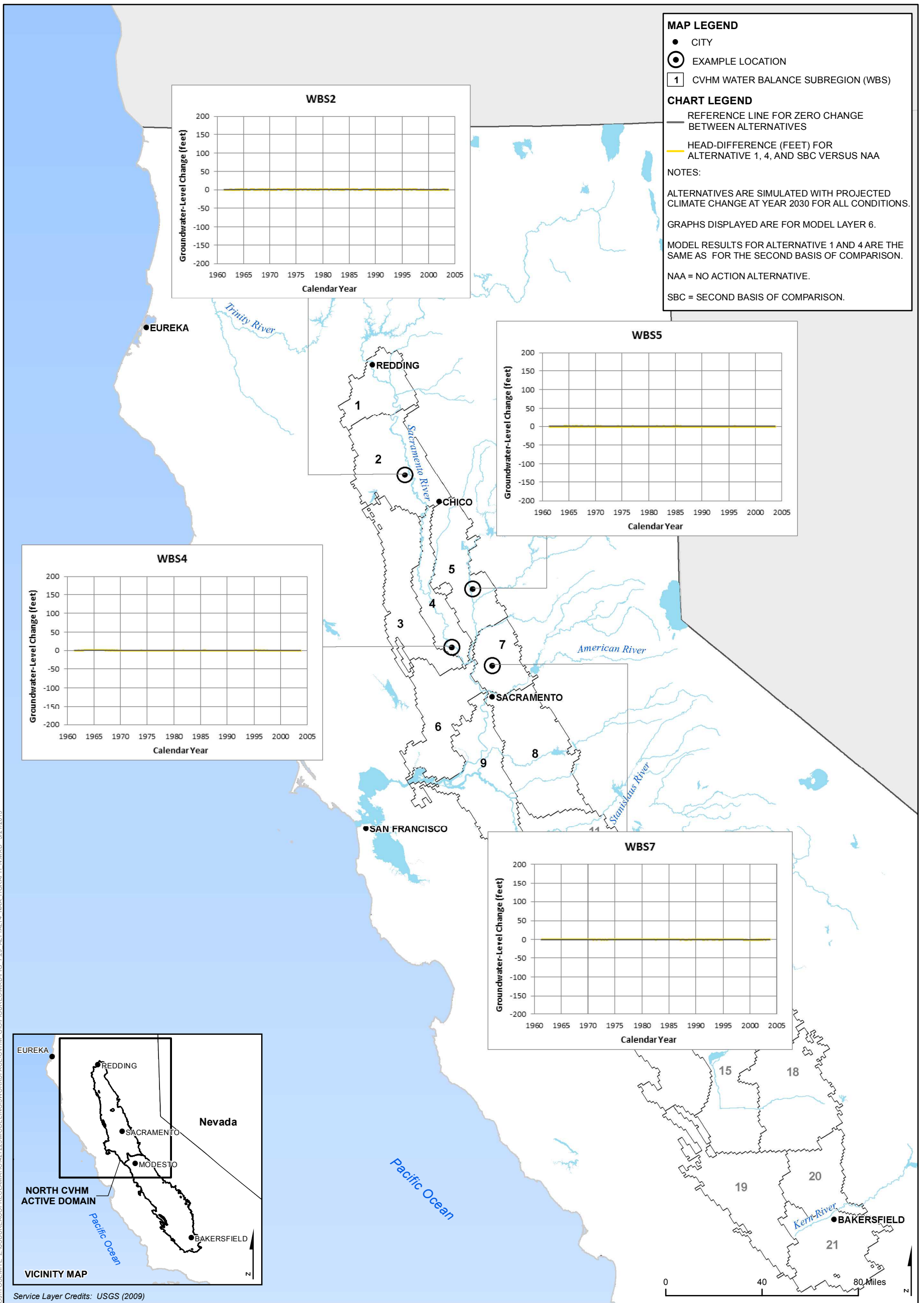


Figure 7.29 Forecast Groundwater-Level Change Hydrographs for Alternative 1, Alternative 4, and Second Basis of Comparison Compared to No Action Alternative at Example Locations in the Sacramento Valley

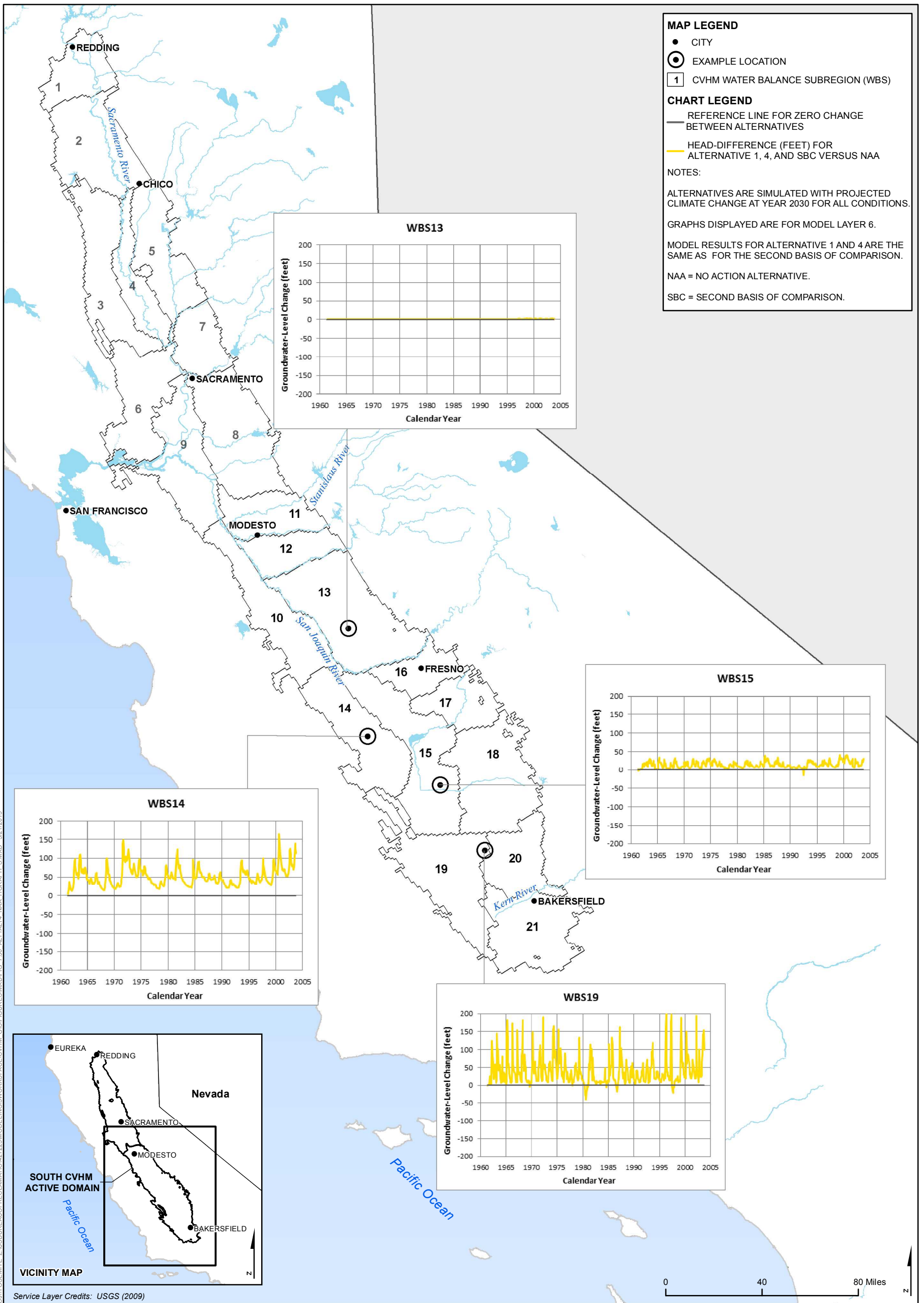


Figure 7.30 Forecast Groundwater-Level Change Hydrographs for Alternative 1, Alternative 4, and Second Basis of Comparison Compared to No Action Alternative at Example Locations in the San Joaquin Valley

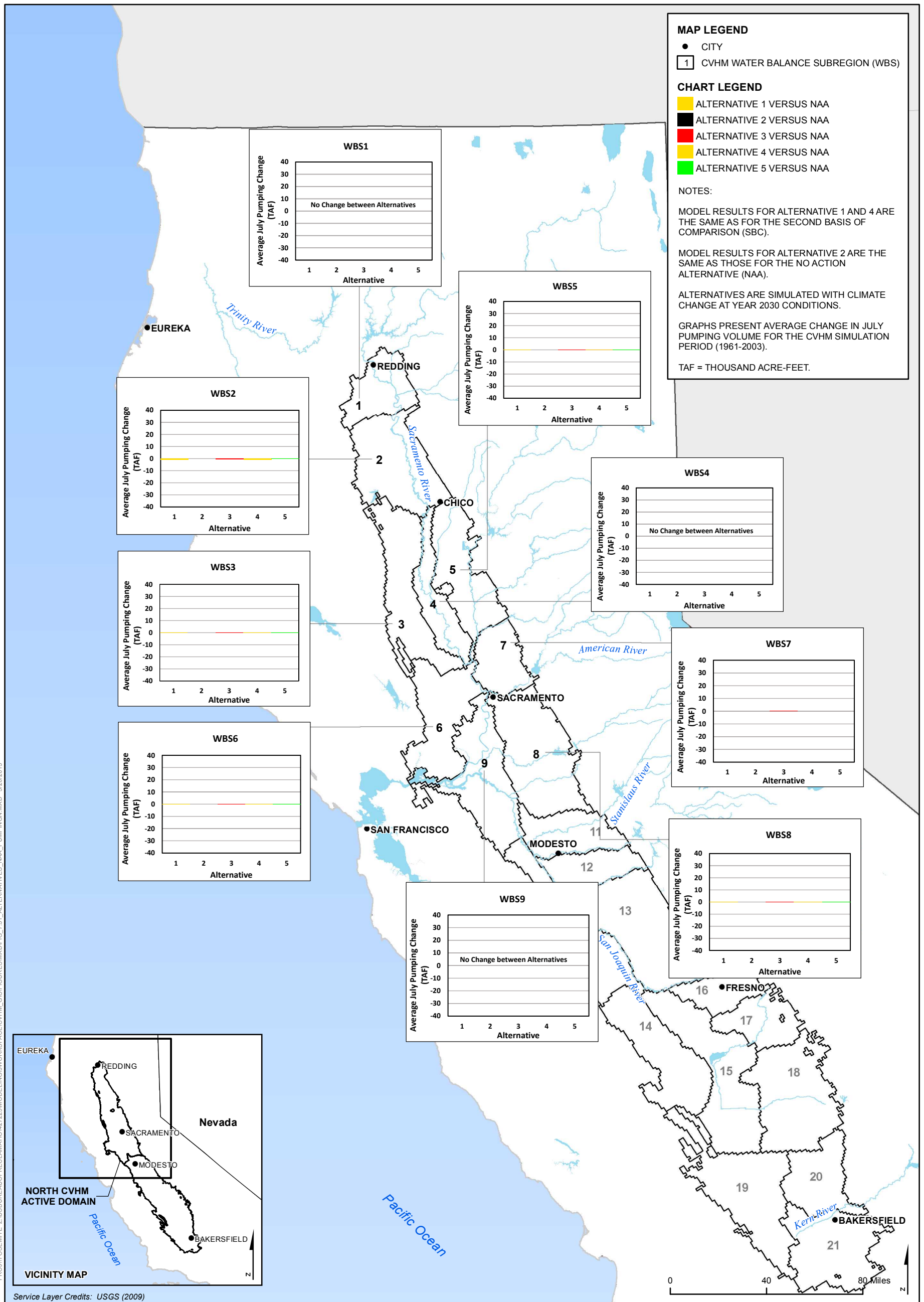


Figure 7.31 Long-term Average Change in July Agricultural Groundwater Pumping for Alternatives Compared to the No Action Alternative in the Sacramento Valley

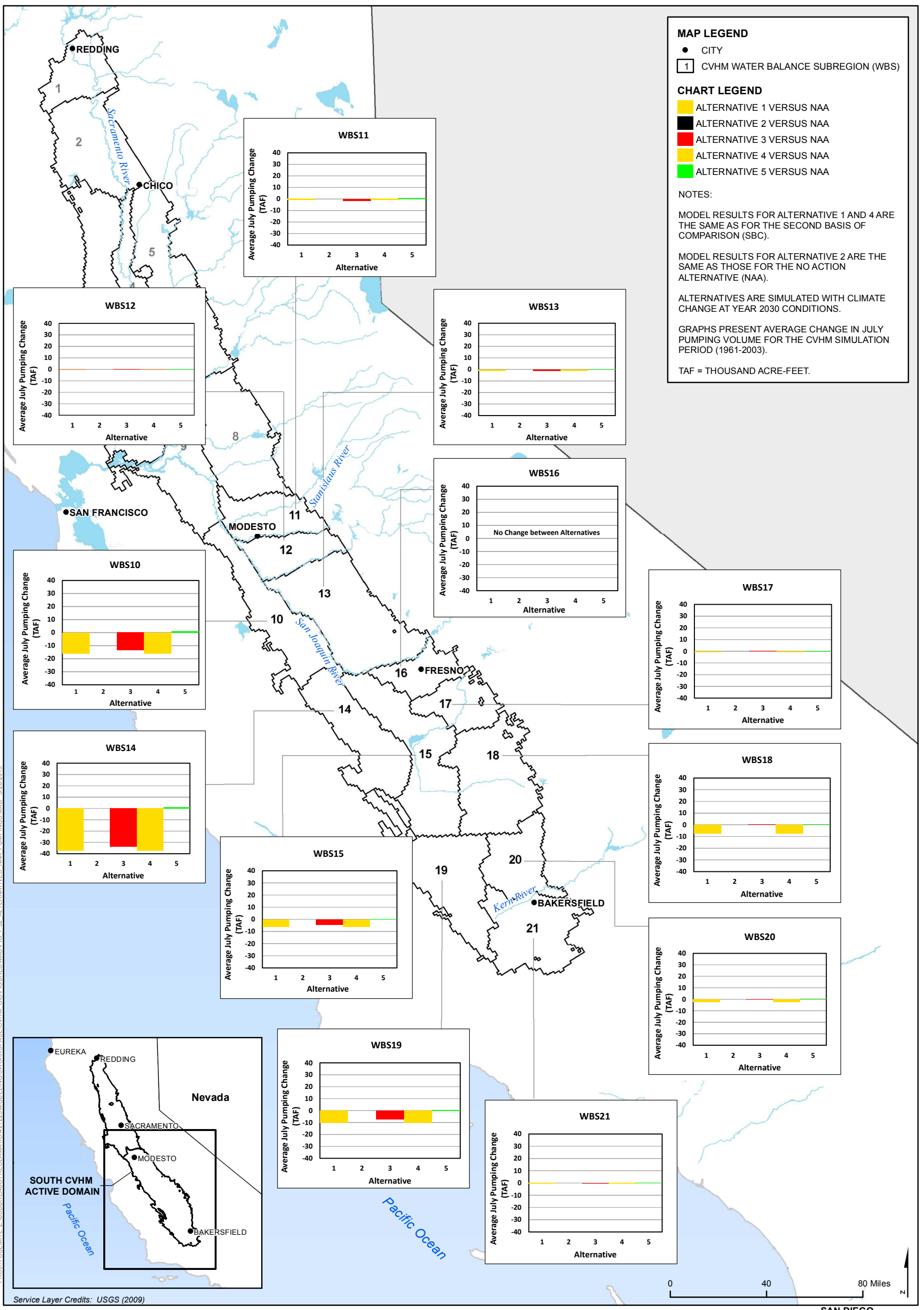


Figure 7.32 Long-term Average Change in July Agricultural Groundwater Pumping for Alternatives Compared to the No Action Alternative in the San Joaquin Valley

PROJ105EMITE_Z:\USBU\REAU\RECLAMATION\42725\MODELING\3\WORKSPACE\CVHM_GIB\FIGURES\MXD\FIG_7.32_ALTERNATIVES_NAA_PUMPINGS.MXD 5/20/2015

Service Layer Credits: USGS (2009)

SAN DIEGO

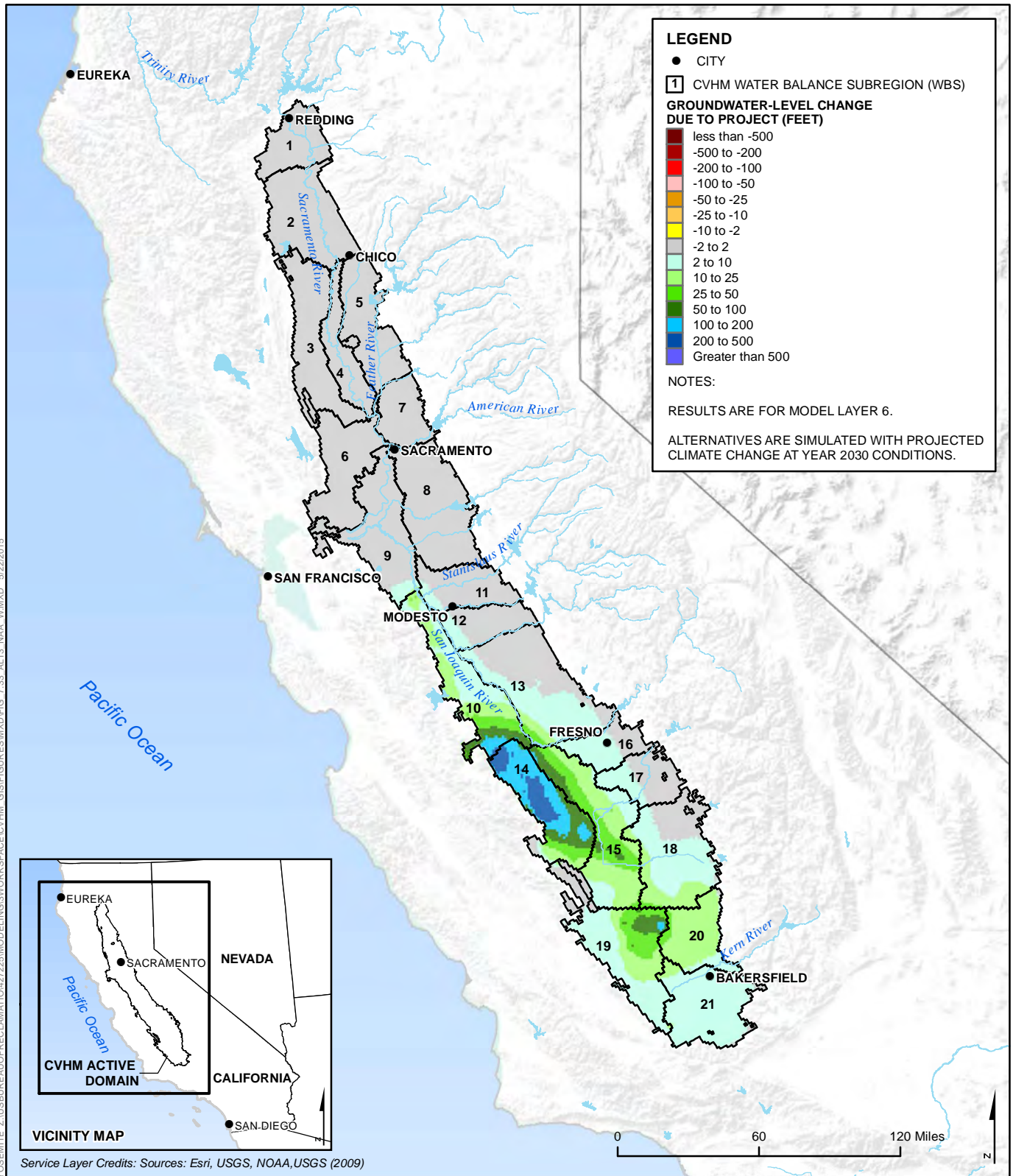


Figure 7.33 Forecast Groundwater-Level Changes for Alternative 3 Compared to No Action Alternative for Average July in a Future Wet Year

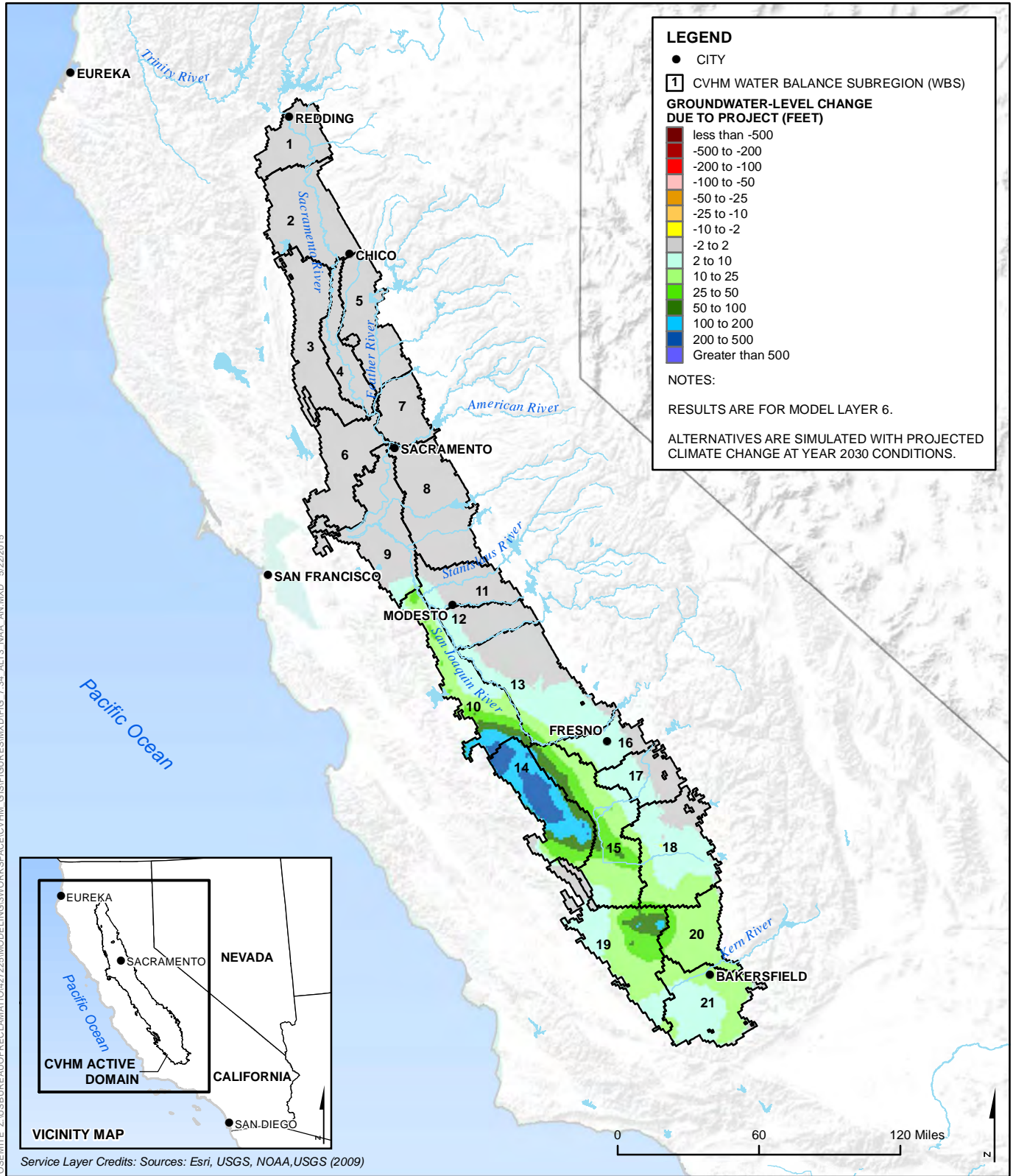


Figure 7.34 Forecast Groundwater-Level Changes for Alternative 3 Compared to No Action Alternative for Average July in a Future Above-Normal Year

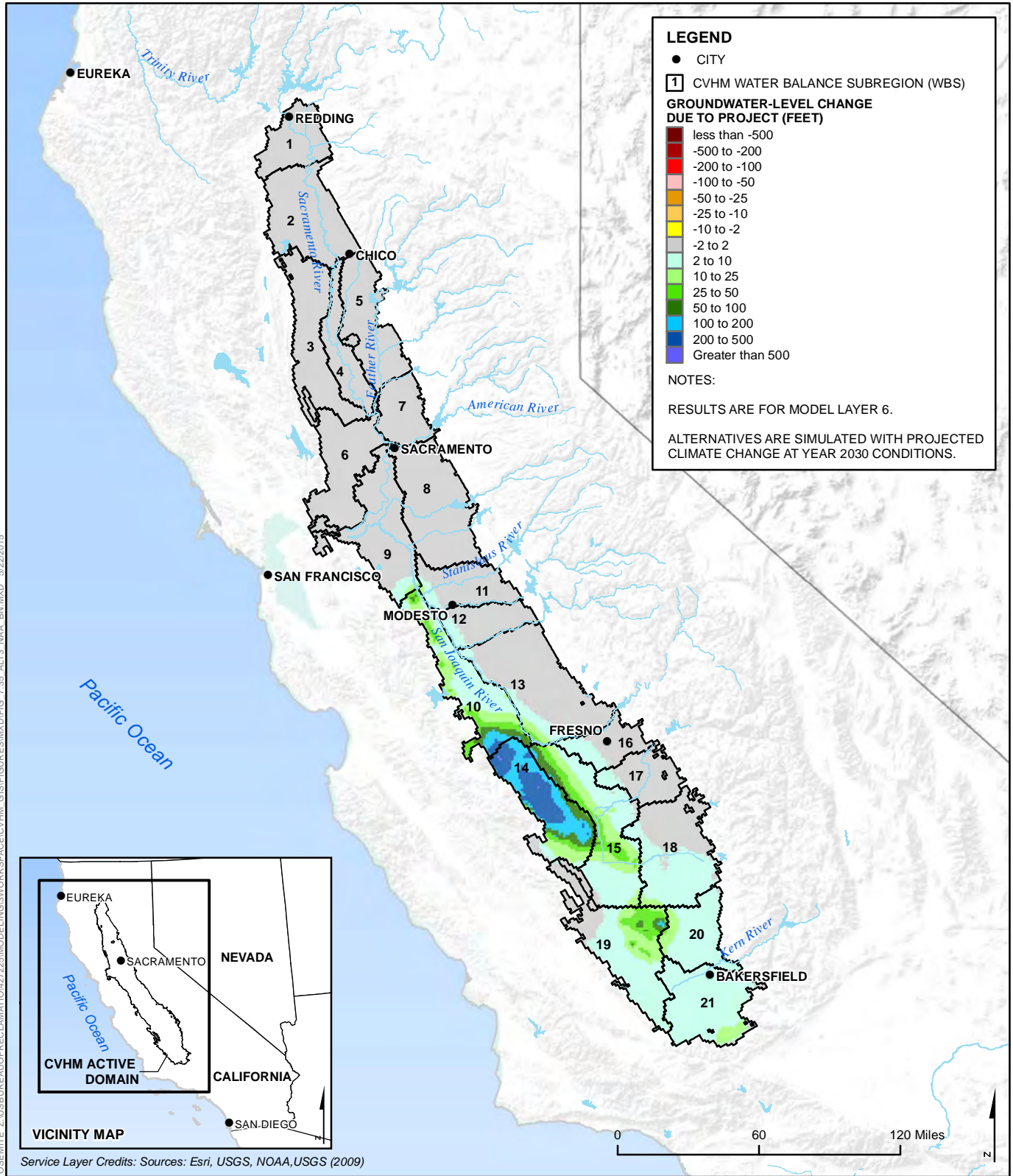


Figure 7.35 Forecast Groundwater-Level Changes for Alternative 3 Compared to No Action Alternative for Average July in a Future Below-Normal Year

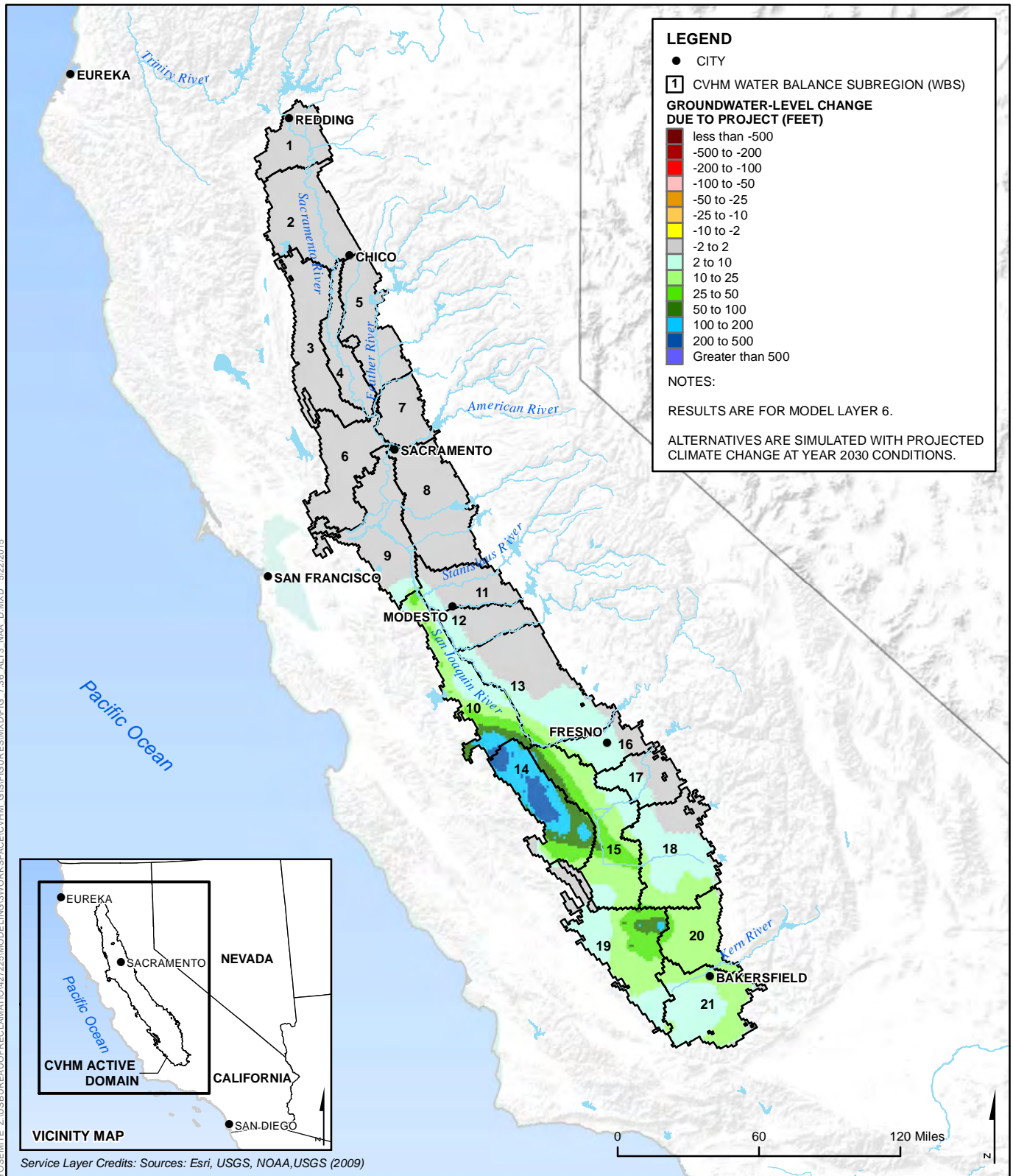


Figure 7.36 Forecast Groundwater-Level Changes for Alternative 3 Compared to No Action Alternative for Average July in a Future Dry Year

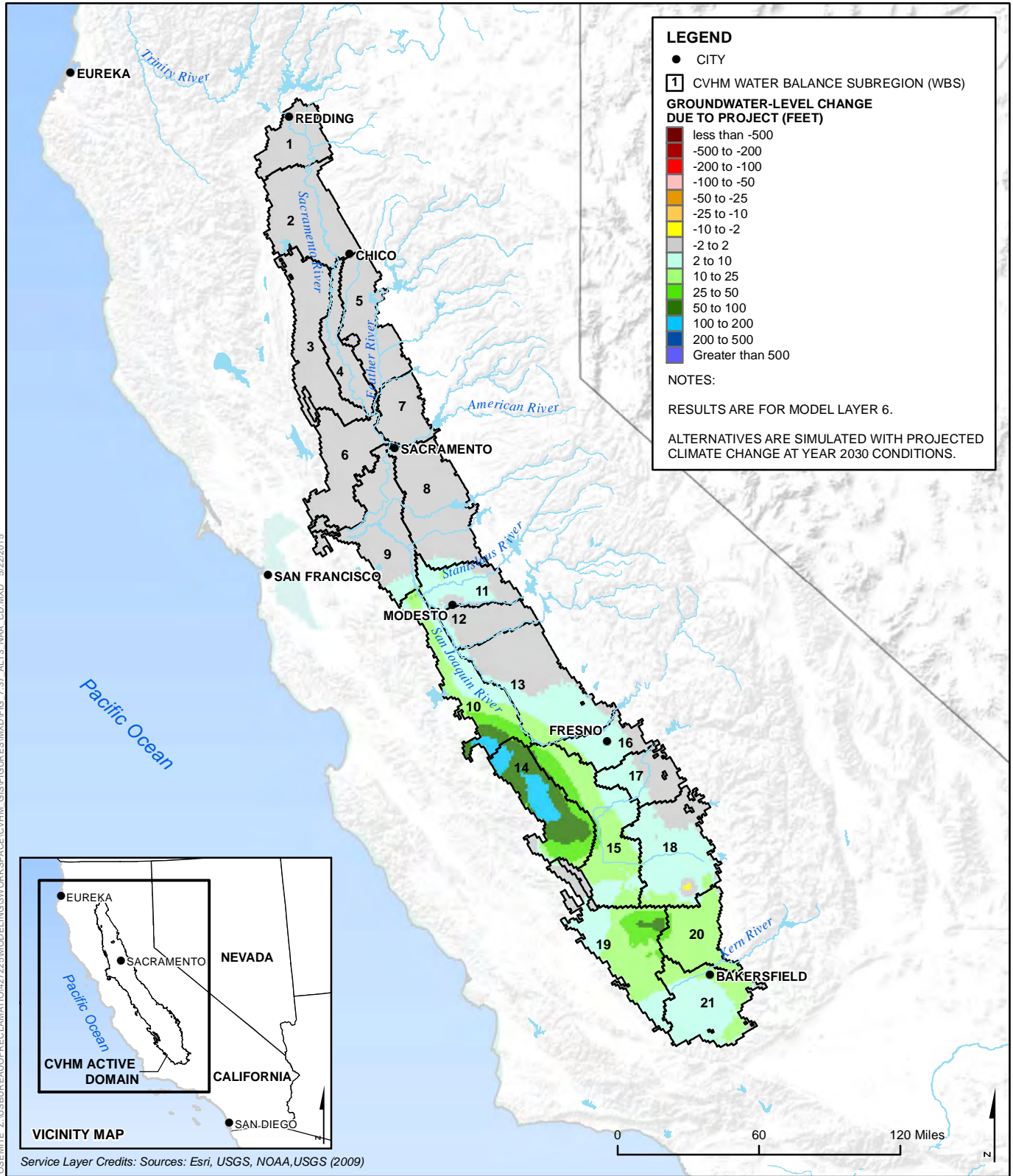


Figure 7.37 Forecast Groundwater-Level Changes for Alternative 3 Compared to No Action Alternative for Average July in a Future Critically-Dry Year

This page left blank intentionally.

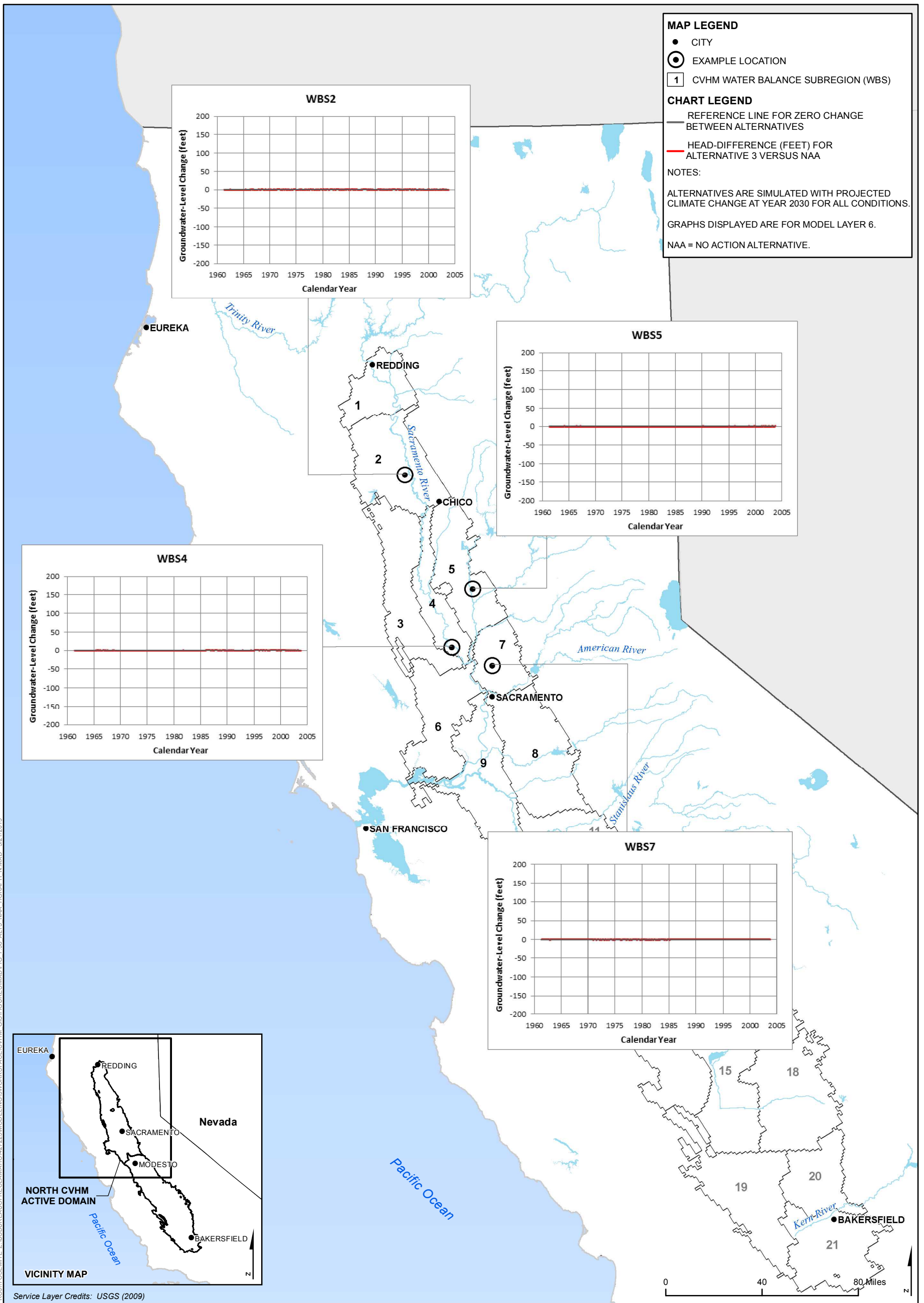


Figure 7.38 Forecast Groundwater-Level Change Hydrographs for Alternative 3 Compared to No Action Alternative at Example Locations in the Sacramento Valley

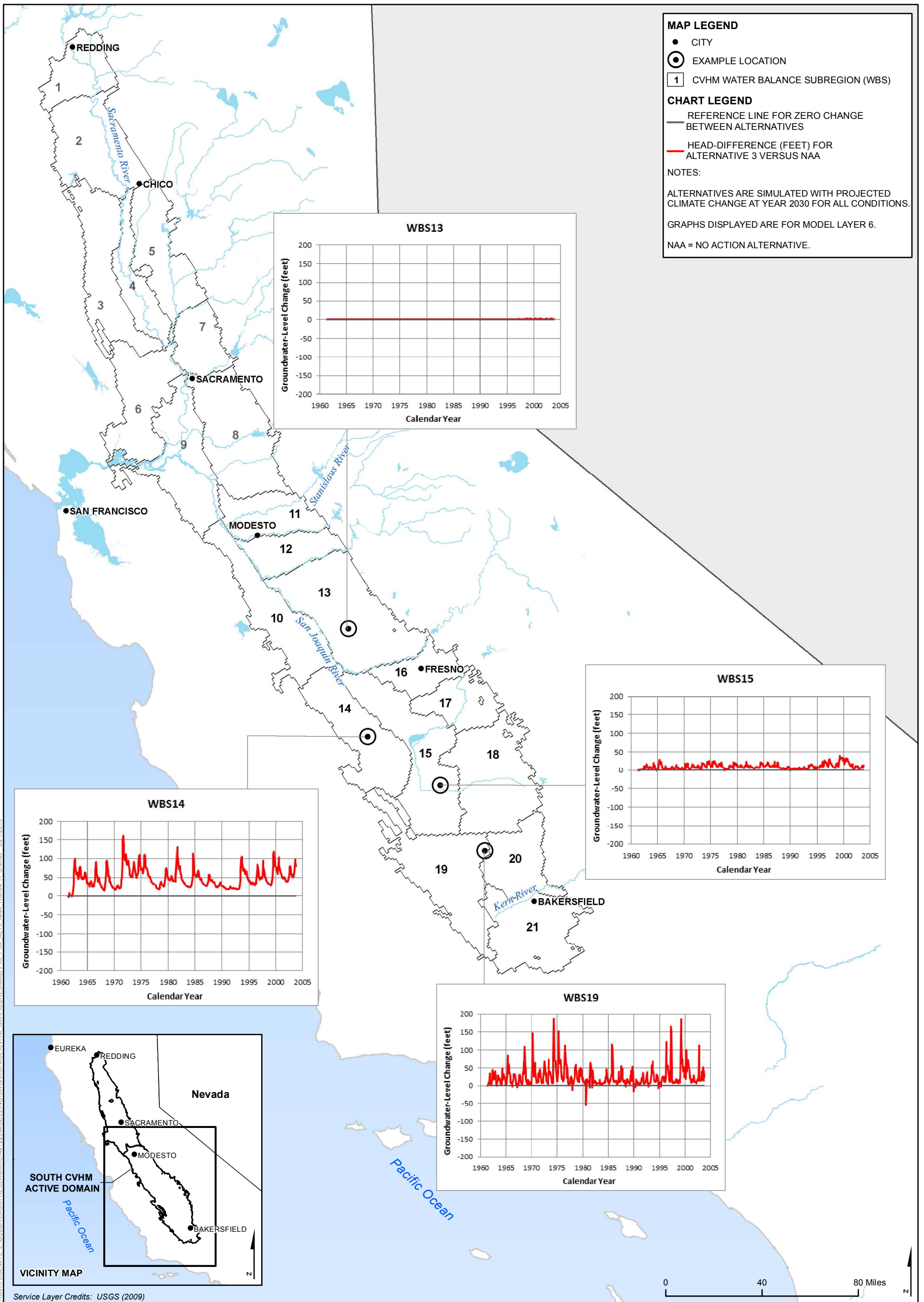


Figure 7.39 Forecast Groundwater-Level Change Hydrographs for Alternative 3 Compared to No Action Alternative at Example Locations in the San Joaquin Valley

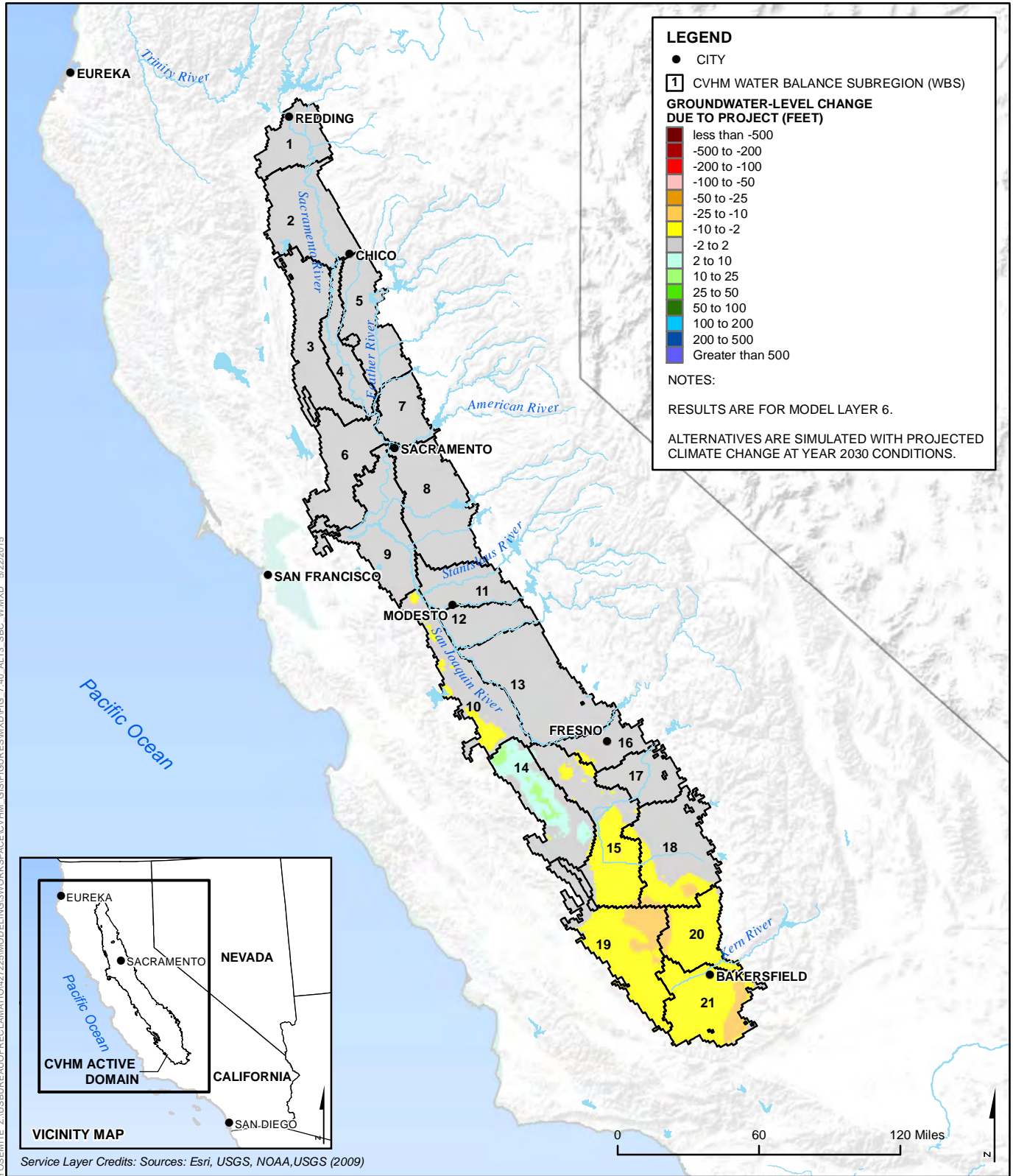


Figure 7.40 Forecast Groundwater-Level Changes for Alternative 3 Compared to Second Basis of Comparison for Average July in a Future Wet Year

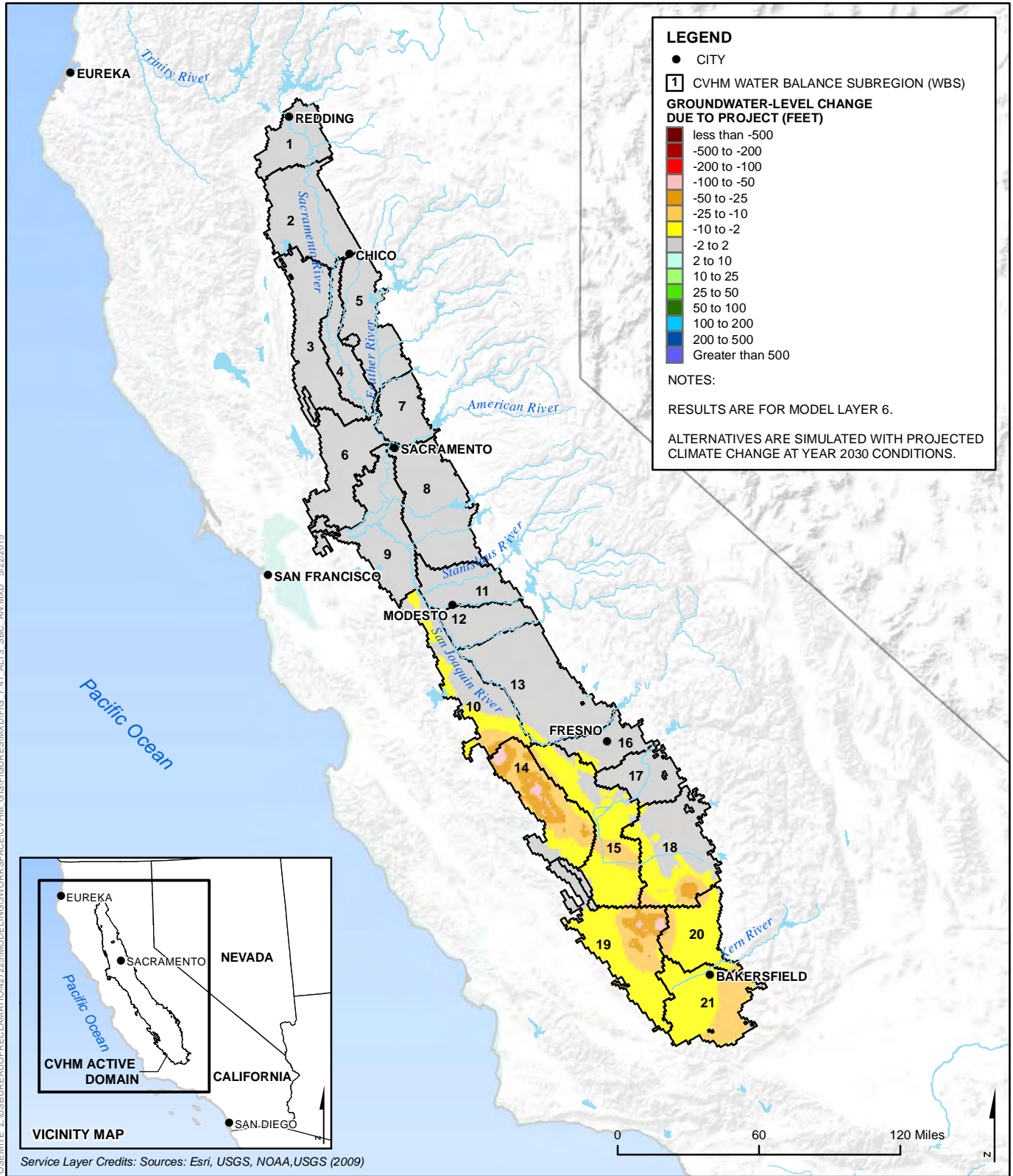


Figure 7.41 Forecast Groundwater-Level Changes for Alternative 3 Compared to Second Basis of Comparison for Average July in a Future Above-Normal Year