

# RECLAMATION

*Managing Water in the West*

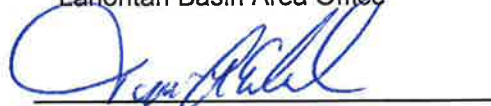
## Categorical Exclusion Checklist

# NV Energy – St. Clair Road Distribution Line Rebuild

LO-2014-1022

Prepared by:  Date: 2/6/15  
Selena J. Weldon  
Natural Resources Specialist  
Lahontan Basin Area Office

Recommended by:  Date: 2/6/15  
Julia A. Long  
Resource Division Manager  
Lahontan Basin Area Office

Approved by:  Date: 2/11/15  
Terri A. Edwards  
Area Manager  
Lahontan Basin Area Office



*[This page intentionally left blank.]*

**BUREAU OF RECLAMATION  
CATEGORICAL EXCLUSION CHECKLIST**

Mid-Pacific Region  
Lahontan Basin Area Office

**Project Name:** NV Energy – St. Clair Road Distribution Line Rebuild

**CEC Number:** LO-2014-1022

**Date:** 2/6/2015

**Cost Authority:** WBS - RX191249991000000, Fund - 15XR0680A2

**7.5 Minute Quad Map:** D7; Fallon – 39118

**Exclusion Category:** *516 DM 14.5 D.10* – Issuance of permits, licenses, easements, and crossing agreements which provide right-of-way (ROW) over Bureau of Reclamation (Reclamation) lands where the action does not allow for or lead to a major public or private action.

**Nature of Reclamation Action:** Issuance of Consent Document (Index No. NP-583-017) where NV Energy is rebuilding a power line and requesting authorization regarding 7 alignment locations that cross over or are located within Reclamation's right of way (ROW) associated with the Sheckler Deep Drain and A5-1 and A5-2 Laterals of the Newlands Project, constructed pursuant to the Rights of Way Reserved to United States for Canals and Ditches Act of 1890, as amended (26 Stat. 391).

**Location:** Sections 3 and 10, Township 18 North, Range 28 East of the Mount Diablo Meridian, Churchill County, Nevada (Figure 1). The project area is between 2 and 3.5 miles southwest of the intersection of Highway 50 and Highway 95 in Fallon, Nevada.

**Description of Proposed Action:** The applicant, NV Energy, has requested the Lahontan Basin Area Office issue an authorization to rebuild a 7.2 kilovolt Wye single phase overhead distribution line with an alignment intersecting Reclamation ROW in 7 separate locations. In addition to the seven crossings, there are several areas where the pole line occupies Reclamation ROW. The line runs along St. Clair Road and down Pflum Lane, Fallon, Nevada (Figure 2 and Exhibit H). The existing line was built by the Truckee-Carson Irrigation District (TCID) around 1937, and it remains on the original wood poles. NV Energy will be replacing 20 of these poles with new 45-foot (ft) tall, class 3 (butt-treated) wood poles. In addition, the old #8 copper wire will be replaced with #2 aluminum-conductor, steel-reinforced (ACSR) wire to provide more consistent voltage and service reliability for customers. One replacement pole at each ROW crossing site will have a guy wire and an anchor for support. There will be at least 32 ft of clearance over the ROW for the wires at each crossing site. To access the seven sites, NV Energy will use existing public roads and private roads leased from TCID.

Site 1 crosses the Sheckler Deep Drain (Exhibit B); the replacement poles and guy wire are outside the 100-ft ROW. Site 2 crosses the A5-1 Lateral (Exhibit E and Figure 3); the replacement poles and guy wire are outside the 60-ft ROW. Site 3 crosses the A5-1 Lateral (Exhibit A and Figure 4); the replacement poles and guy wire are within the 60-ft ROW. Site 4 crosses the A5-1 Lateral (Exhibit F); one replacement pole and guy wire (south side of St. Clair Road) are within the 60-ft ROW. Site 5 crosses the A5-2 Lateral (Exhibit C); the replacement poles are outside the ROW. Site 6 crosses the A5-2 Lateral (Exhibit D); one replacement pole and guy wire are within the 60-ft ROW. Site 7 crosses the Sheckler Deep Drain (Exhibit G); the replacement pole and guy wire (south side) are within the 100-ft ROW.

During construction activities, Best Management Practices will be incorporated to the maximum extent practicable to mitigate potential soil erosion and/or surface runoff problems. To prevent the spread of invasive species onto Reclamation's ROW, heavy equipment will be power washed and free of mud and plant material before entering the construction sites. If straw wattles or bales are required during the construction process, they will be certified weed seed free.

NV Energy will be responsible for reporting and appropriate disposal of all waste products when the project is concluded. All wastes generated, including trash, sanitary waste, scraps and salvage materials, hazardous materials and petroleum products, will be removed from all lands within the service line alignment and disposed in accordance with applicable local, state and federal regulations. Following is a list of hazardous materials which may be used, produced, transported, or stored within the project area during the construction: Acetylene; automatic transmission fluid; Contact Cleaner 2000<sup>®</sup>; diesel fuel deicer; diesel fuel additive; gasoline; North Safety Product's Champion Sprayon<sup>®</sup> Wasp and Hornet Spray insecticide; Prestone<sup>®</sup> 11 Antifreeze; Wagner<sup>®</sup> Brake Fluid; WD-40<sup>®</sup>; and Zep<sup>®</sup> Professional Solvent. Material Safety Data Sheets for the items listed above and the U.S. Department of Transportation's *2012 Emergency Response Guidebook* are carried on all NV Energy's line trucks and will be available on site, as needed, in the event of a spill within Reclamation's ROW.

Reclamation has determined that this project will have No Effect on any threatened or endangered species or their designated critical habitat protected under the Endangered Species Act of 1973, as amended; therefore, no consultation with the U.S. Fish and Wildlife Service is required.

**Timeline:** NV Energy will begin construction as soon as possible upon receiving authorization from Reclamation. It is estimated that construction will take 4–5 weeks to complete.

<b>EVALUATION OF CRITERIA FOR CATEGORICAL EXCLUSION</b>		<b>No</b>	<b>Yes</b>	<b>Uncertain</b>
1.	This action or group of actions would have a significant effect on the quality of the human environment. <i>(40 CFR 1502.3)</i>	X		
2.	This action or group of actions would have highly controversial environmental effects or involve unresolved conflicts concerning alternative uses of available resources. <i>(NEPA Section 102(2)(E))</i>	X		
3.	This action would have significant adverse effects on public health and safety. <i>(43 CFR 46.215(a))</i>	X		
4.	This action would have significant impacts on such natural resources and unique geographical characteristics such as historic or cultural resources; park, recreation or refuge lands; wilderness areas; wild or scenic rivers, national natural landmarks; sole or principal drinking aquifers; prime farmlands; wetlands <i>(EO 11990)</i> ; floodplains <i>(EO 11988)</i> ; national monuments; migratory birds <i>(EO 13186)</i> ; and other ecologically significant or critical areas. <i>(43 CFR 46.215 (b))</i>	X		
5.	This action will have highly uncertain and potentially significant environmental effects or involve unique or unknown environmental risks. <i>(43 CFR 46.215 (d))</i>	X		
6.	This action will establish a precedent for future action or represent a decision in principle about future actions without potentially significant environmental effects. <i>(43 CFR 46.215 (e))</i>	X		
7.	This action has a direct relationship to other actions with individually insignificant, but cumulatively significant environmental effects. <i>(43 CFR 46.215 (f))</i>	X		
8.	This action will have significant impacts on properties listed or eligible for listing in the in the National Register of Historic Places <i>(National Register)</i> as determined by the Bureau (in coordination with a Reclamation cultural resources professional, RM LND 02-01 D(1)(a)). <i>(43 CFR 46.215 (g))</i>	X		
9.	This action will have significant impacts on species listed or proposed to be listed, on the List of Endangered or Threatened Species, or have significant impacts on designated Critical habitat for these species. <i>(43 CFR 46.215 (h))</i>	X		
10.	This action threatens to violate Federal, State, local or Tribal law or requirements imposed for protection of the human environment. <i>(43 CFR 46.215 (i))</i>	X		
11.	This action will have a disproportionately high and adverse effect on low income or minority populations. <i>(EO 12898) (43 CFR 46.215 (j))</i>	X		
12.	This action will limit access to and ceremonial use of Indian sacred sites on Federal lands by Indian religious practitioners or significantly adversely affect the physical integrity of such sacred sites. <i>(EO 13007) (43 CFR 46.215 (k))</i>	X		
13.	This action will affect Indian Trust Assets (ITA). <i>(This determination must be completed and documented by, or in coordination with, the designated regional ITA coordinator; S.O. 3175; Policy Memorandum dated 12/15/1993)</i>	X		
14.	This action will contribute to the introduction, continued existence, or spread of noxious weeds or non-native invasive species known to occur in the area or actions that may promote the introduction, growth, or expansion of the range of such species. <i>(Federal Noxious Weed Control Act and EO 13112) (43 CFR 46.215 (l))</i>	X		

**NEPA ACTION RECOMMENDED:**

**X CE CHECKLIST:** The proposed action meets the criteria, as defined in 516 DM 2 Appendix 1 or 516 DM Appendix 9, and qualifies as a categorical exclusion. The action will not significantly affect the quality of the human environment. It is excluded from documentation in an Environmental Assessment (EA) or Environmental Impact Statement (EIS).

or

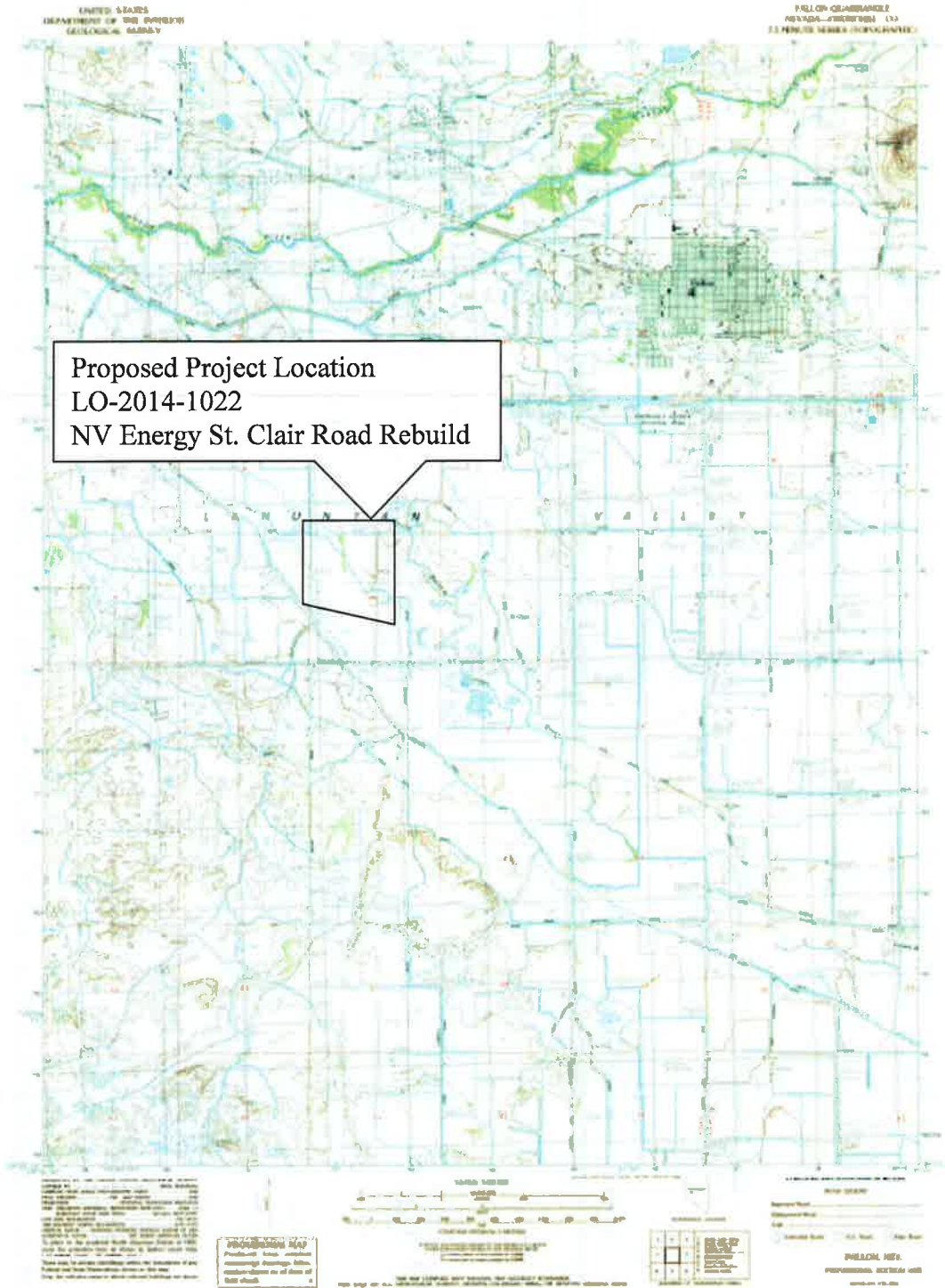
The proposed action does not meet the criteria for a categorical exclusion. Further environmental review and analysis is required. The following document should be prepared:

EA \_\_\_\_\_

EIS \_\_\_\_\_

**Environmental commitments, explanation, and/or remarks:**

See the attached correspondence from the Mid-Pacific Region Cultural Resources Division regarding concurrence with Item 8, and from the acting Mid-Pacific Region ITA Coordinator (Richard Stevenson) regarding Item 13.



**Figure 1. Geographic location of NV Energy's St. Clair Road Distribution Line Rebuild, Churchill County, Nevada.**

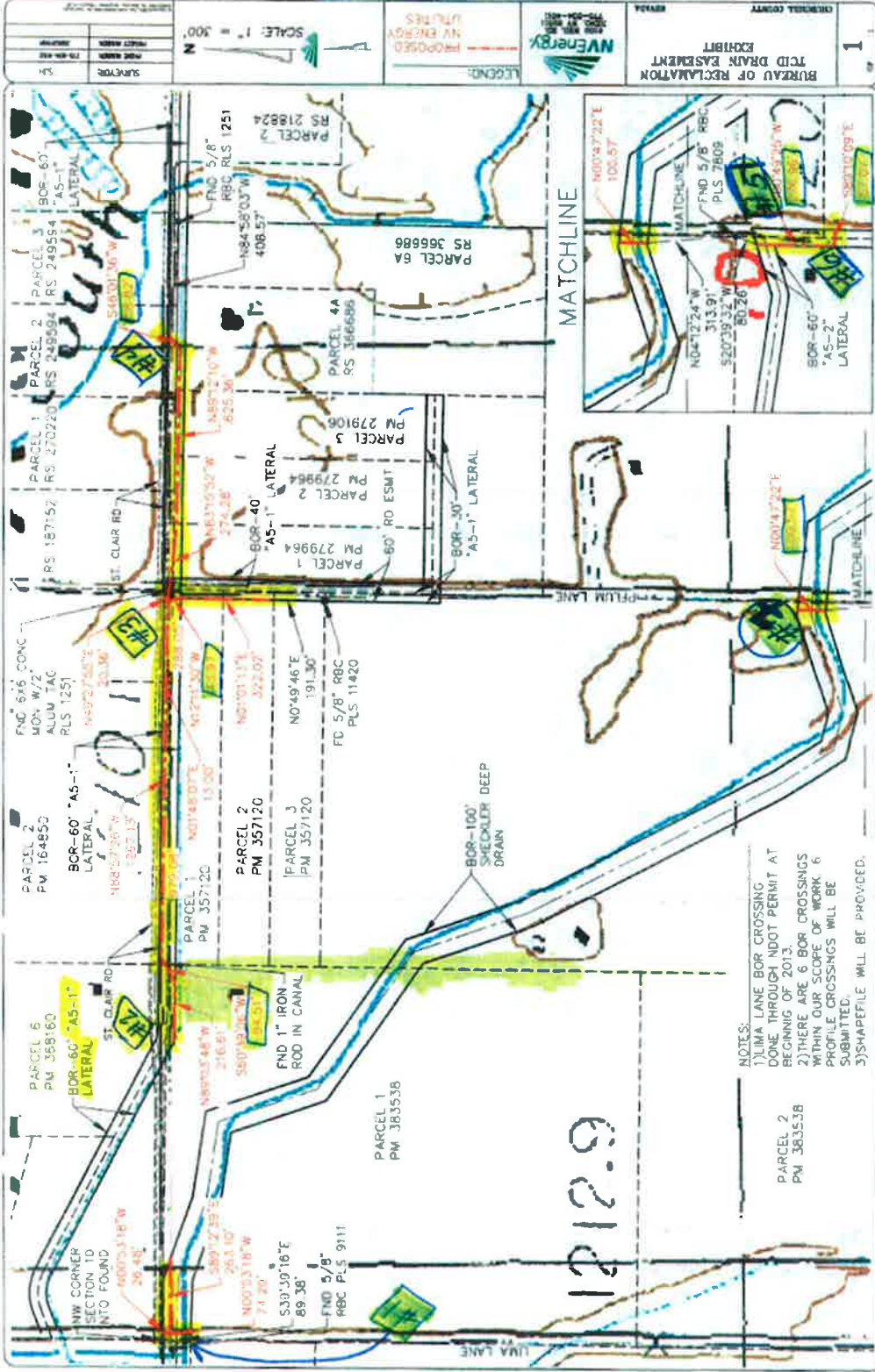
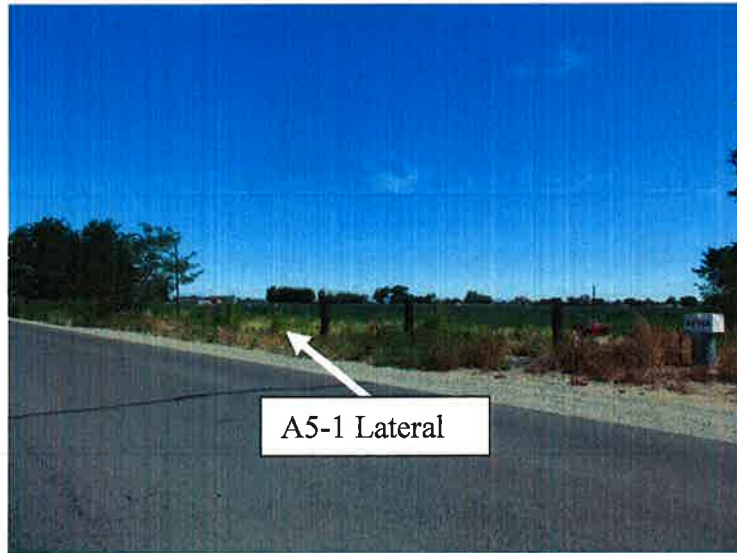


Figure 2. Map of seven proposed crossing sites for NV Energy's St. Clair Road Distribution Line Rebuild, Churchill County, Nevada.

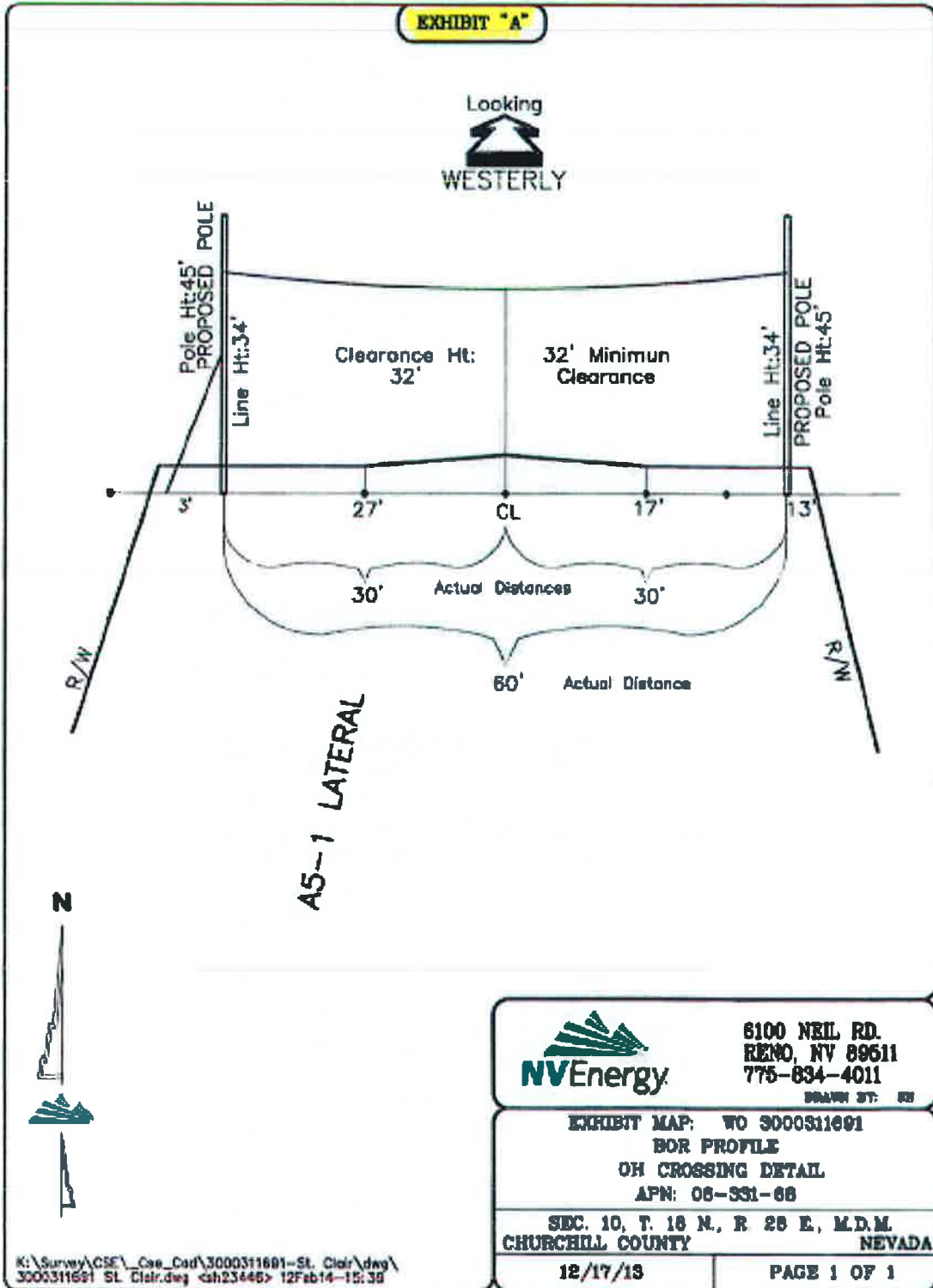




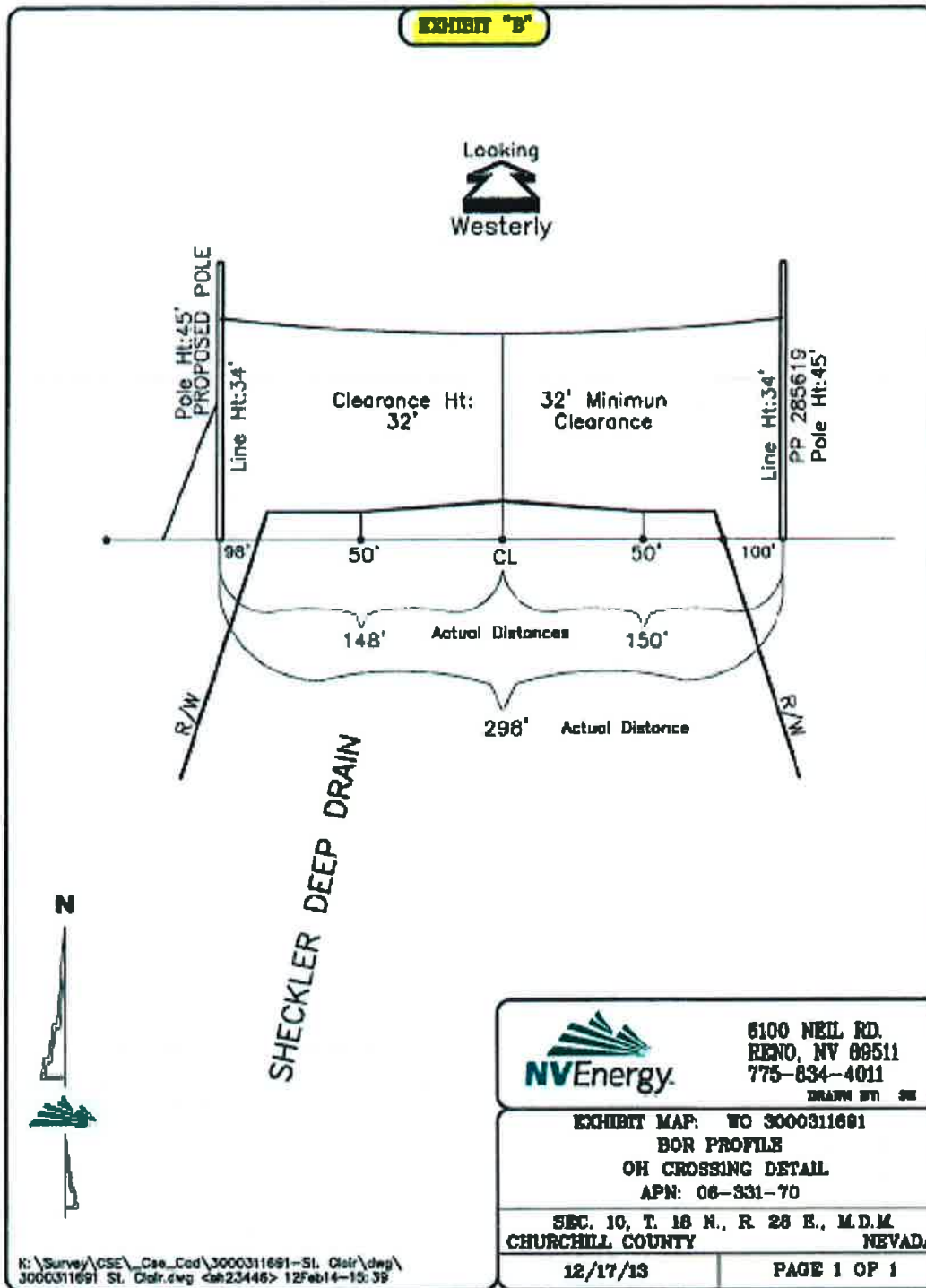
**Figure 3. Looking east-southeast at Site 2 crossing of A5-1 Lateral along St. Clair Road, Churchill County, Nevada (see Exhibit E).**



**Figure 4. Looking west-southwest at Site 3 pole and wire crossing of A5-1 Lateral immediately south of the intersection of St. Clair Road and Pflum Lane, Churchill County, Nevada (see Exhibit A).**



**Exhibit A. Site 3 for NV Energy's St. Clair Distribution Line Rebuild Project, Churchill County, Nevada.**



**Exhibit B. Site 1 for NV Energy's St. Clair Distribution Line Rebuild Project, Churchill County, Nevada.**

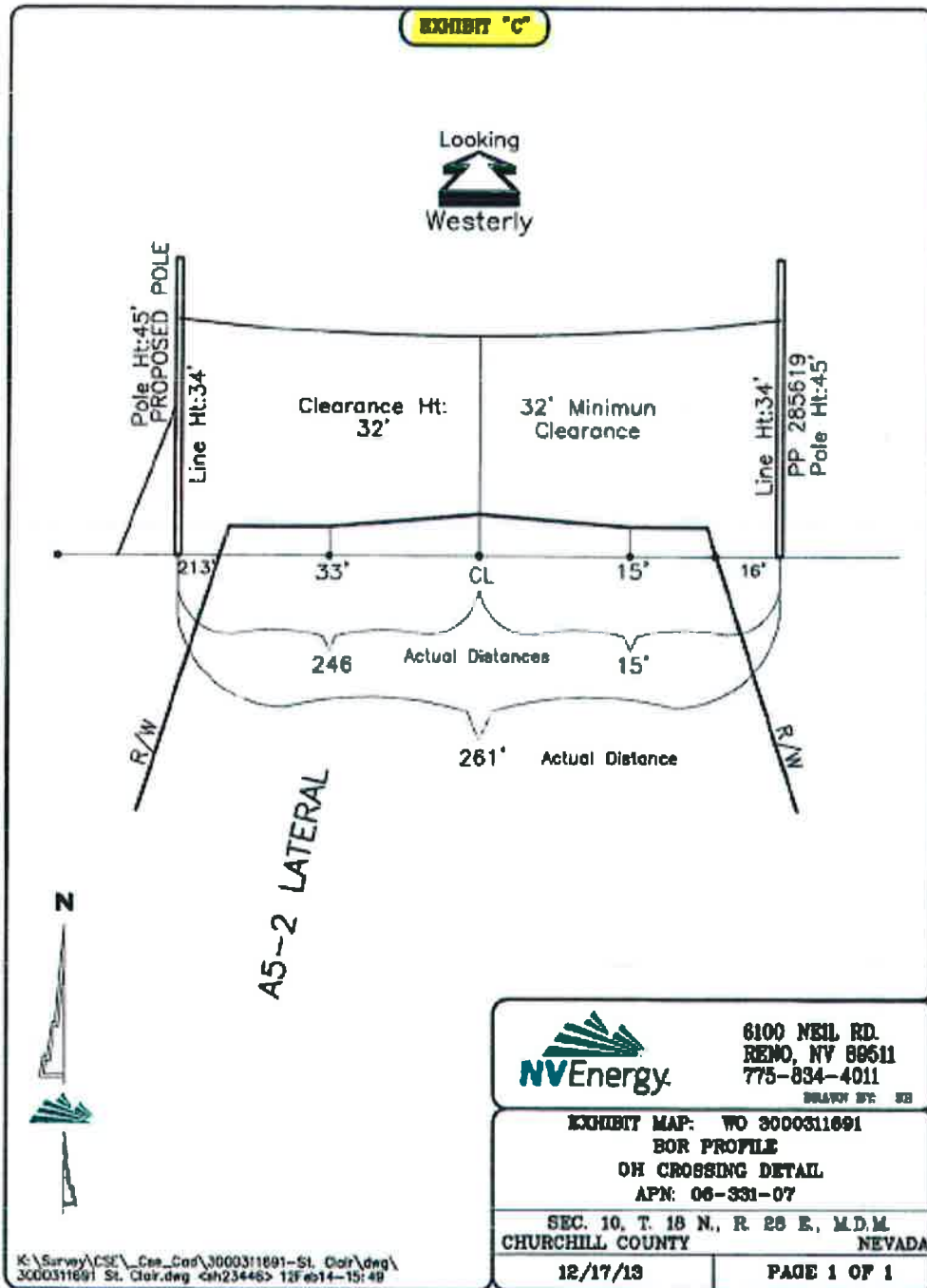
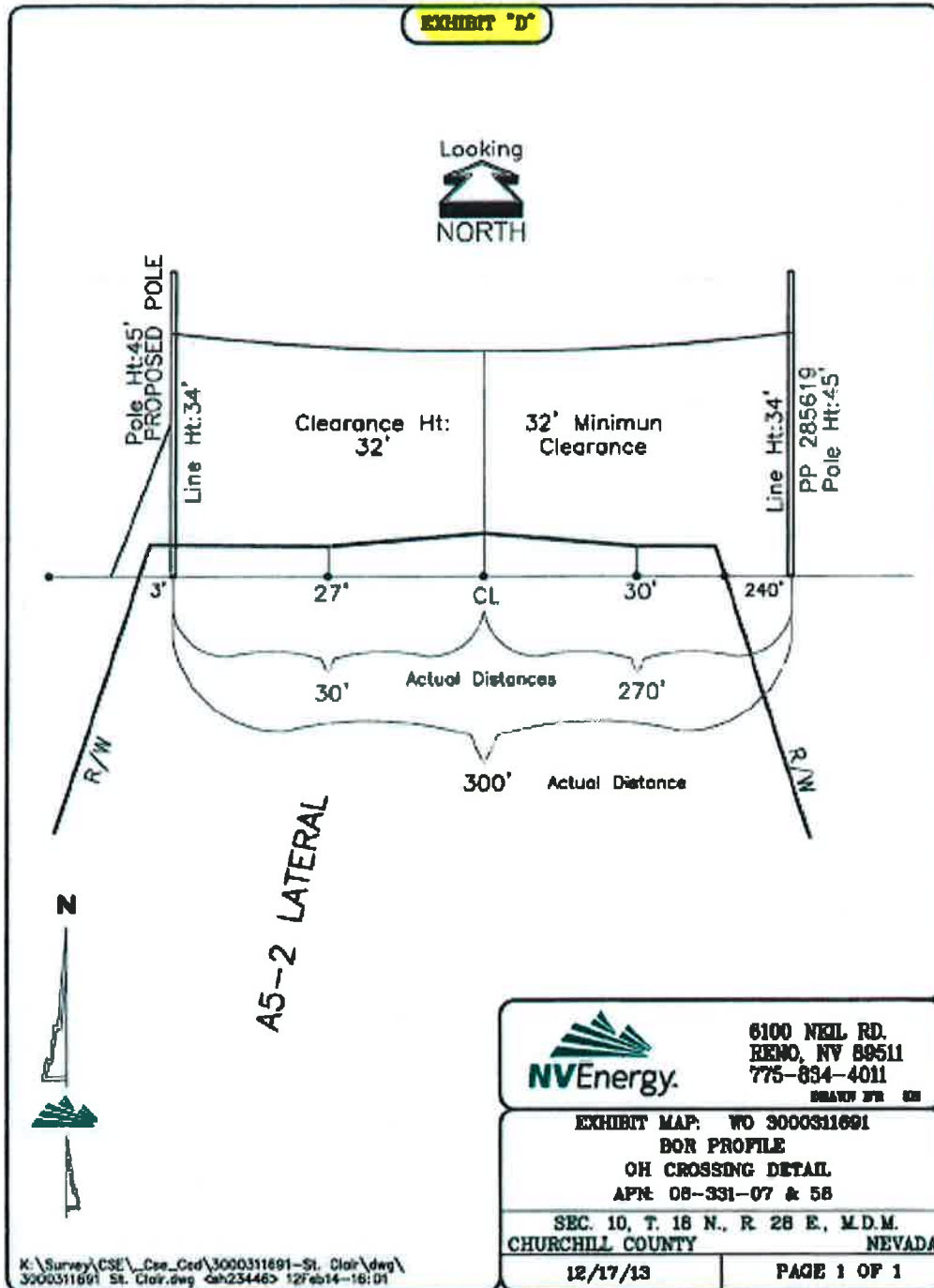


Exhibit C. Site 5 for NV Energy's St. Clair Distribution Line Rebuild Project, Churchill County, Nevada.



**Exhibit D. Site 6 for NV Energy's St. Clair Distribution Line Rebuild Project, Churchill County, Nevada.**

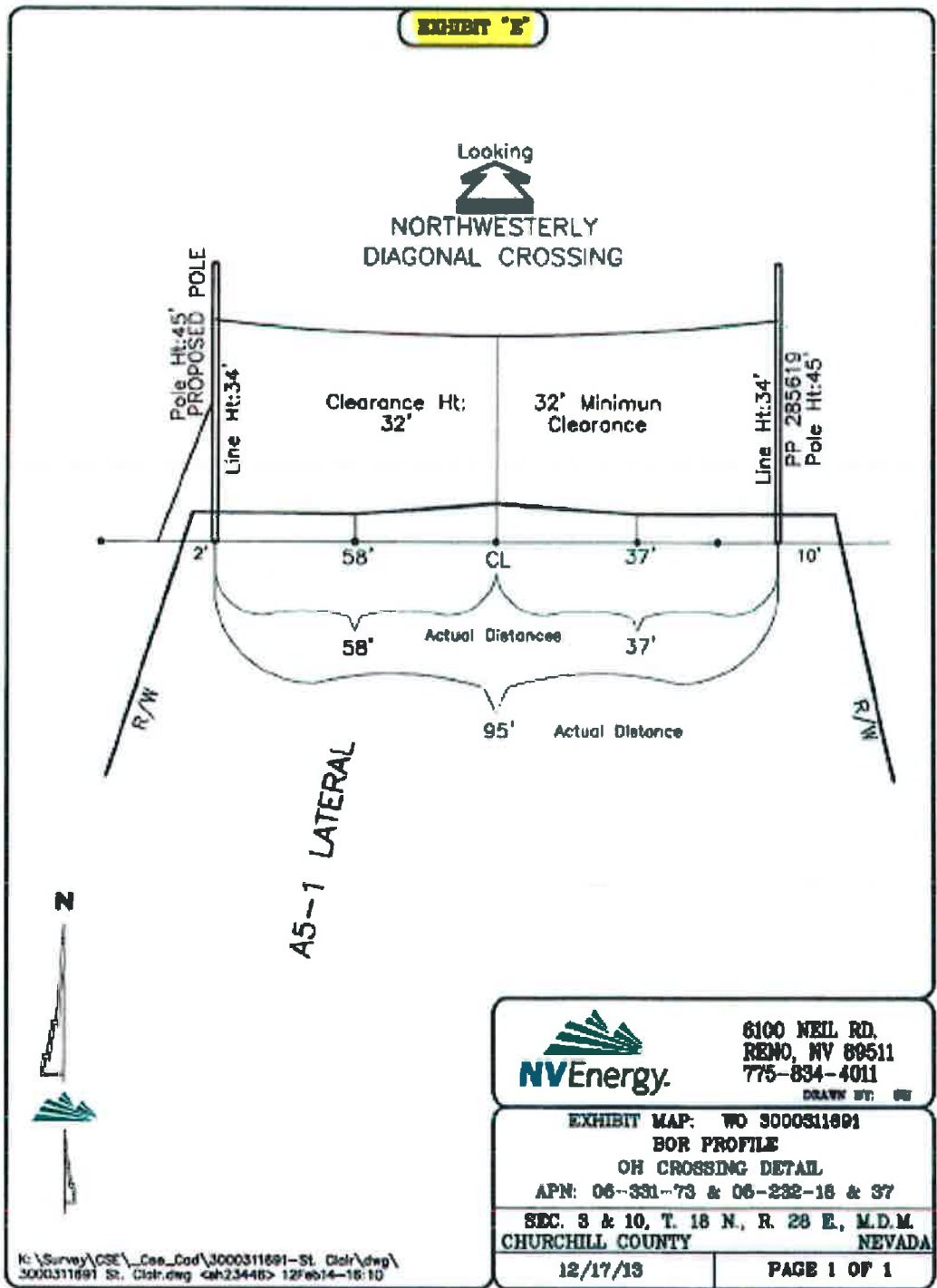


Exhibit E. Site 2 for NV Energy's St. Clair Distribution Line Rebuild Project, Churchill County, Nevada.

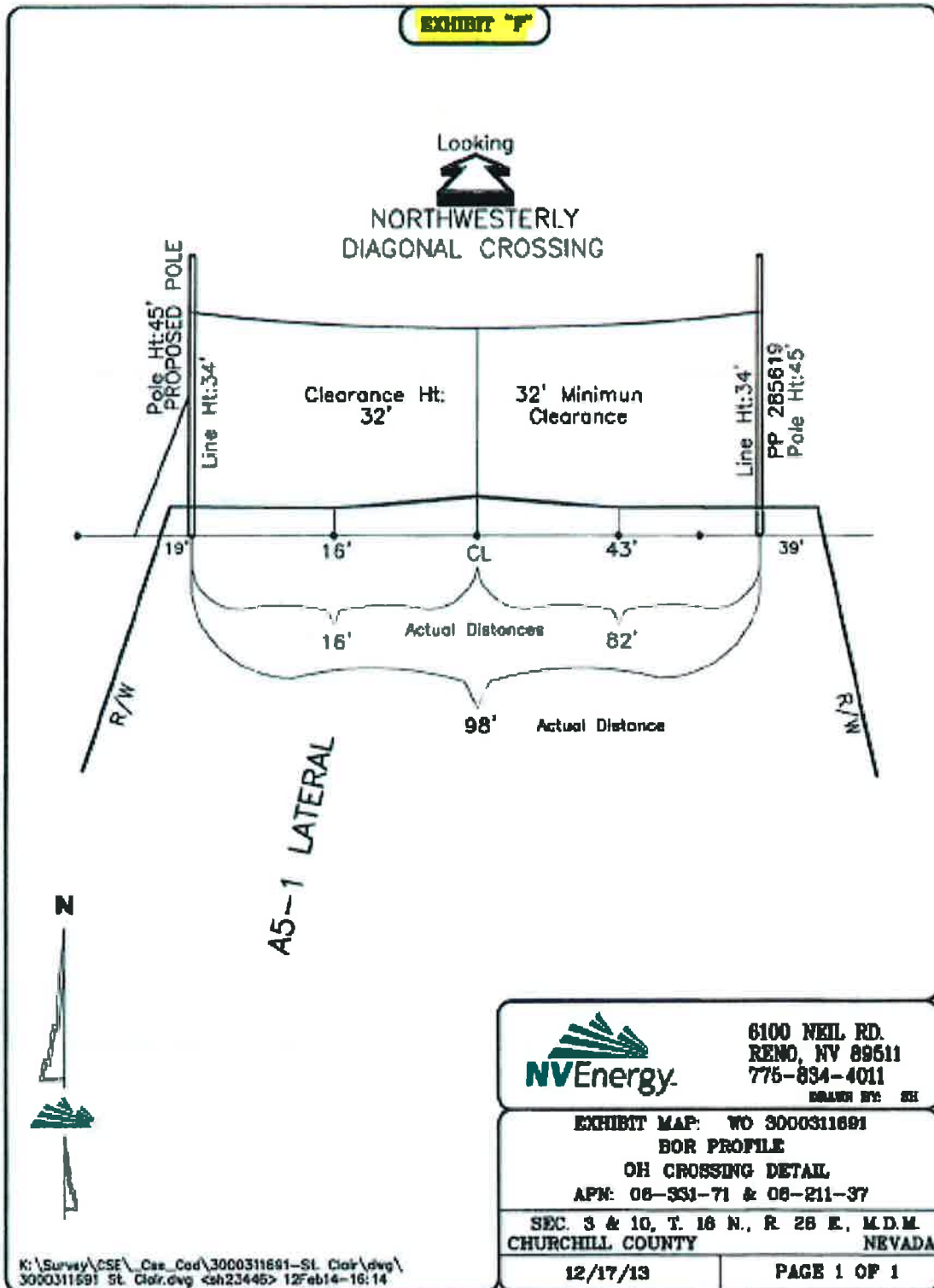


Exhibit F. Site 4 for NV Energy's St. Clair Distribution Line Rebuild Project, Churchill County, Nevada.

#7

EXHIBIT G

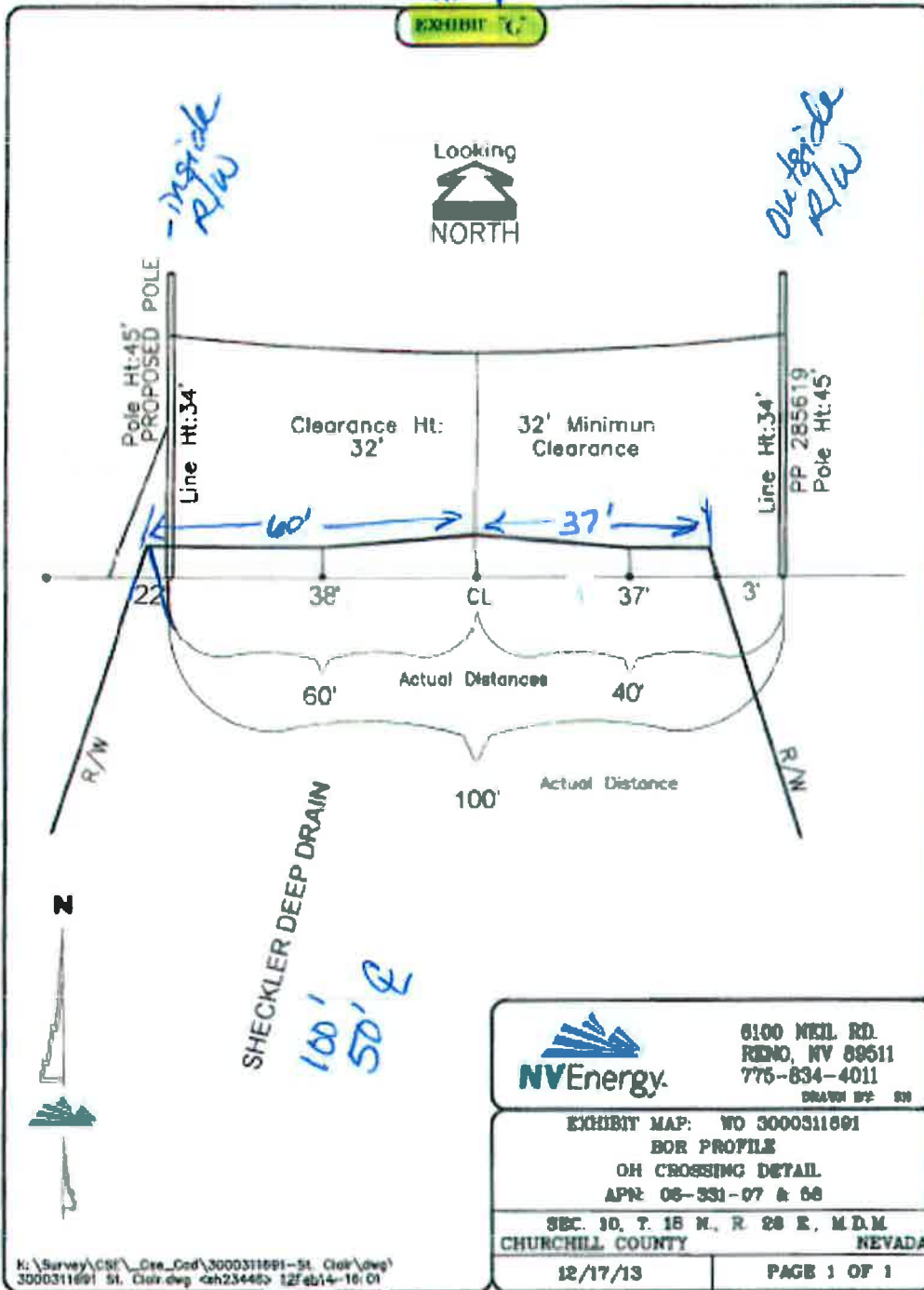


Exhibit G. Site 7 for NV Energy's St. Clair Distribution Line Rebuild Project, Churchill County, Nevada.





**RECLAMATION**  
*Managing Water in the West*

Lahontan Basin Area Office  
 705 N. Plaza Street, Carson City, NV 89701



0 250 500 1,000 Feet

**Tracking No. LO-2014-1022**  
**NV Energy St. Clair Rebuild**  
**Work Order# 3000311691**

*T. 18N, R. 28E, Sec. 10, N, SENW, NESW, NWSE*  
*Mount Diablo Meridian, Churchill County, Nevada*

**CULTURAL RESOURCE COMPLIANCE**  
**Reclamation Division of Environmental Affairs**  
**MP-153**

**MP-153 Tracking Number:** 15-LBAO-074

**Project Name:** NV Energy – St. Clair Project

**NEPA Document:** LO-2014-1022

**MP 153 Section 106 Reviewer:** BranDee Bruce

**Date:** February 5, 2015

---

Selena,

Portions of the Newlands Project were constructed, operated and maintained under the authority of 43 U.S.C. § 945: US Code - Section 945 (1890 Canal Act), which provides a patents of right of way for ditches or canals. Congress passed the Canal Act to allow construction of canals and ditches to provide irrigation to the arid western lands expressly reserved to the federal government an easement of right-of-way across all lands west of the 100th meridian. Reclamation does not own or have authority over lands on or around the facility, much like a normal easement. Under the Canal Act, Reclamations only authority is with the continued operation and maintenance of the canal and its delivery of water.

No permit, license or other authorization will be issued by Reclamation, therefore, Reclamation's consent that our operations will not be affected by this project does not meet the definition of an undertaking pursuant to 36 CFR §800.16(y) and compliance with Section 106 of the National Historic Preservation Act (NHPA) is not required. In general, management of historic properties falls within Reclamation's NHPA Section 110 responsibilities. However, since there will be no new ground disturbance within the A5-1 Lateral, A5-2 Lateral, or the Sheckler Deep Drain prisms or berms, Reclamation has no responsibilities for Section 110.

Reclamation has concluded the NHPA Section 106 and Section 110 process for this proposed project. Item #8, on LO-2014-1022, pertaining to significant impacts on historic properties, does not apply this proposed project.



Werdon, Selena <swerdon@usbr.gov>

**Re: New map for CEC LO-2014-1022 NV Energy's St. Clair Distribution Line Rebuild**

1 message

**Johnson, Charles** <cjohnson@usbr.gov>  
To: "Werdon, Selena" <swerdon@usbr.gov>  
Cc: RICHARD STEVENSON <rstevenson@usbr.gov>

Fri, Feb 6, 2015 at 1:20 PM

Selena,

I understand that this is the same rebuild activity but just a different location along the utility ROW.

From the new information provided, this location is about 4.5 miles southwest of the nearest ITA lands. Given the nature of the activities, we can reasonably state that there will be no impacts on ITA lands.

## *Chuck Johnson*

Chuck Johnson, CPSS  
Chief, Land Resources  
Regional GIS Program Manager  
Regional Realty Officer  
Regional Soil Scientist  
Regional Fire Management Officer  
US Bureau of Reclamation      voice 916-978-5266  
2800 Cottage Way (MP-450)      FAX 916-978-5290  
Sacramento, CA 95825-1898      [cjohnson@usbr.gov](mailto:cjohnson@usbr.gov)

"Non sibi sed aliis"

\*\*\*\*\*

On Fri, Feb 6, 2015 at 12:40 PM, Werdon, Selena <swerdon@usbr.gov> wrote:

Hi Chuck,

Attached is a new and improved location map to go along with ITA Form: CEC LO-2014-1022 NV Energy's St. Clair Line Rebuild. This goes with the draft CEC sent on February 3, 2015. Please review and concur if you determine there are no potential impacts to Indian Trust Assets.

Have a nice weekend.

Thanks,  
Selena

--  
Selena J. Werdon  
Natural Resources Specialist  
Lahontan Basin Area Office  
775-884-8366  
[swerdon@usbr.gov](mailto:swerdon@usbr.gov)