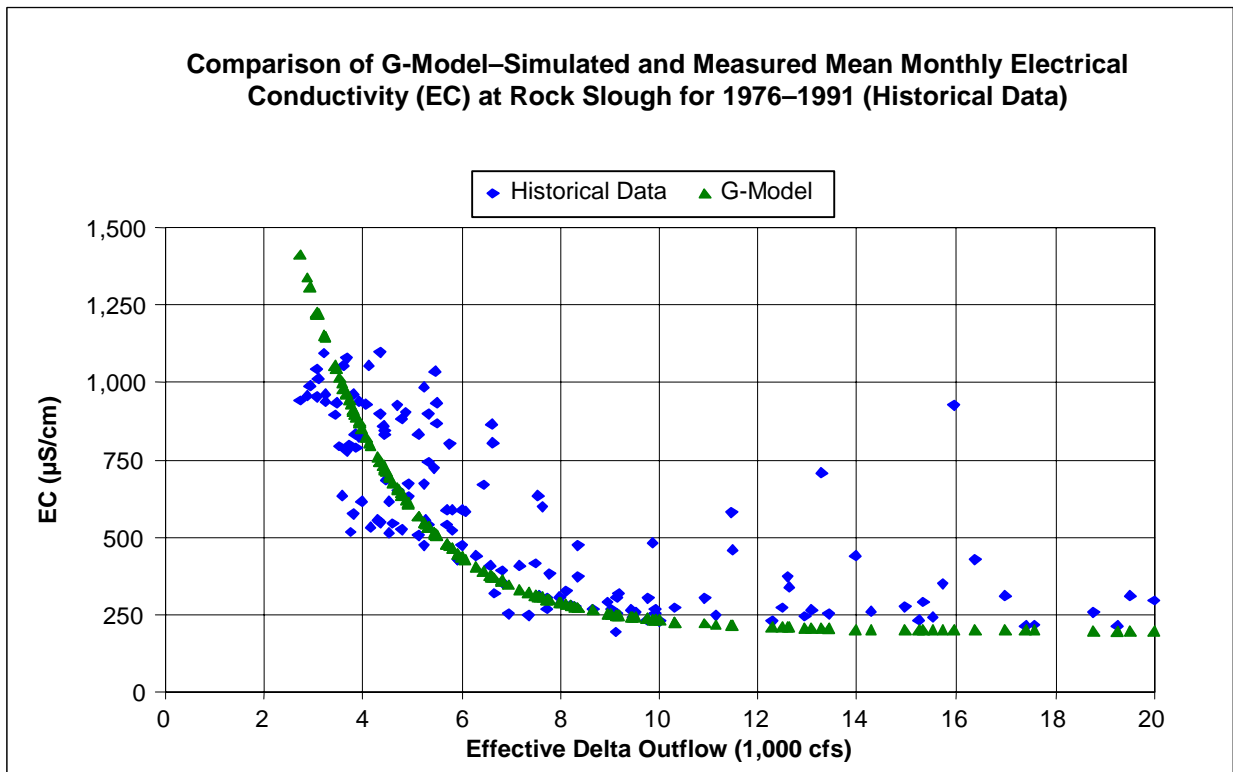
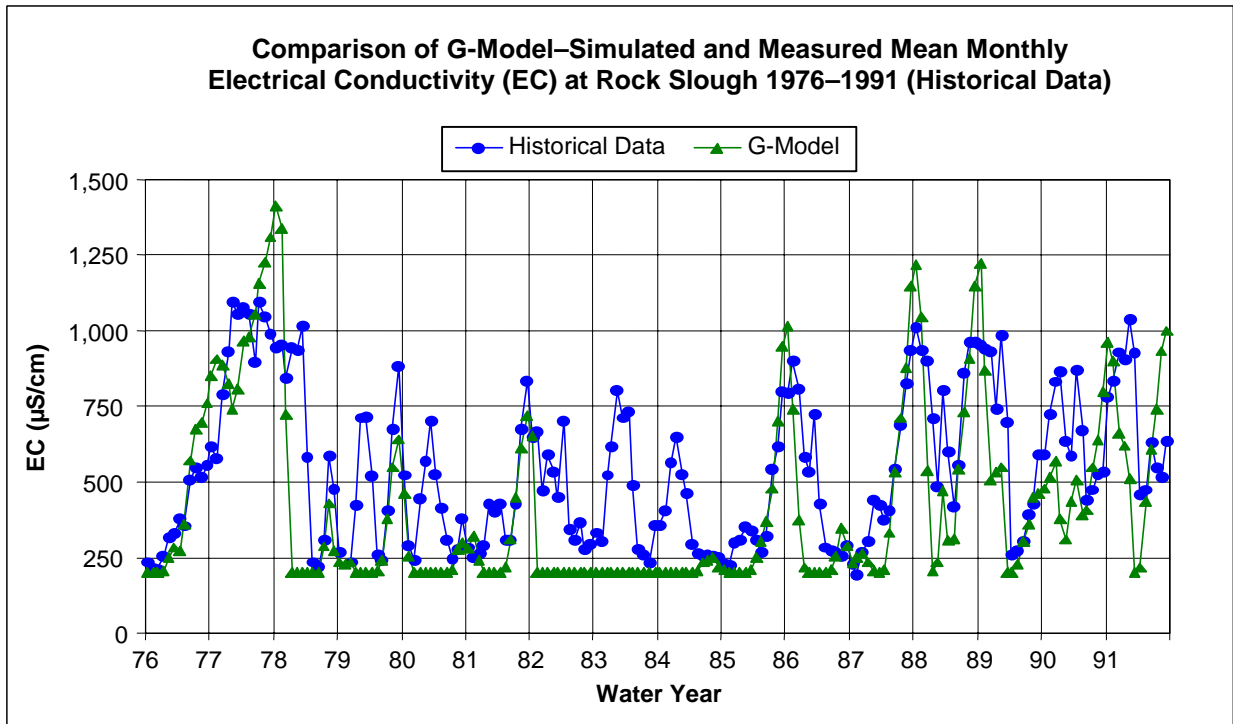
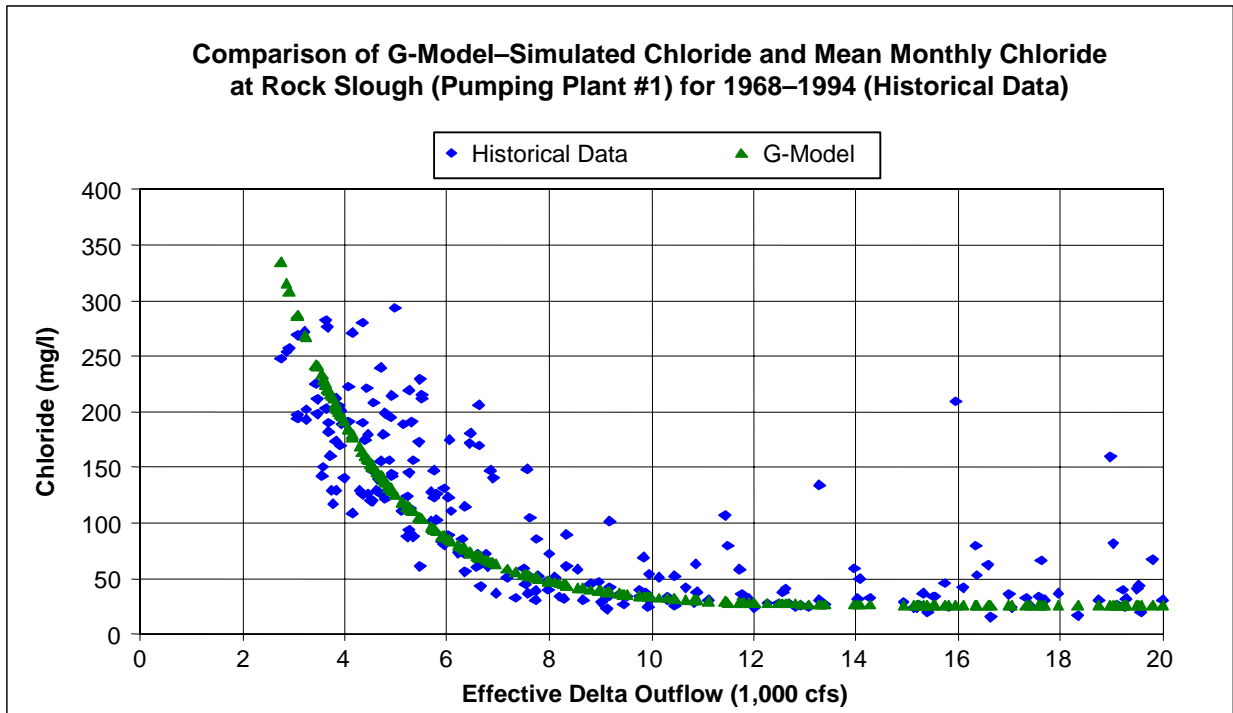
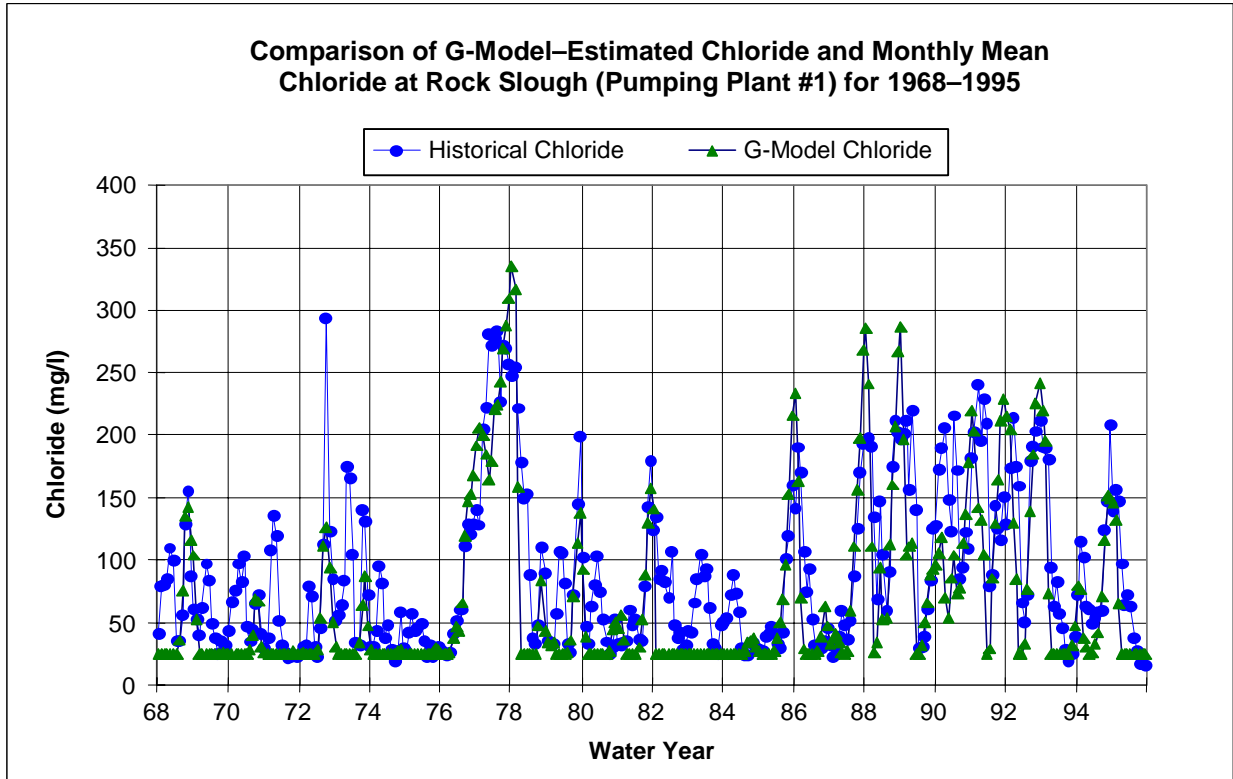


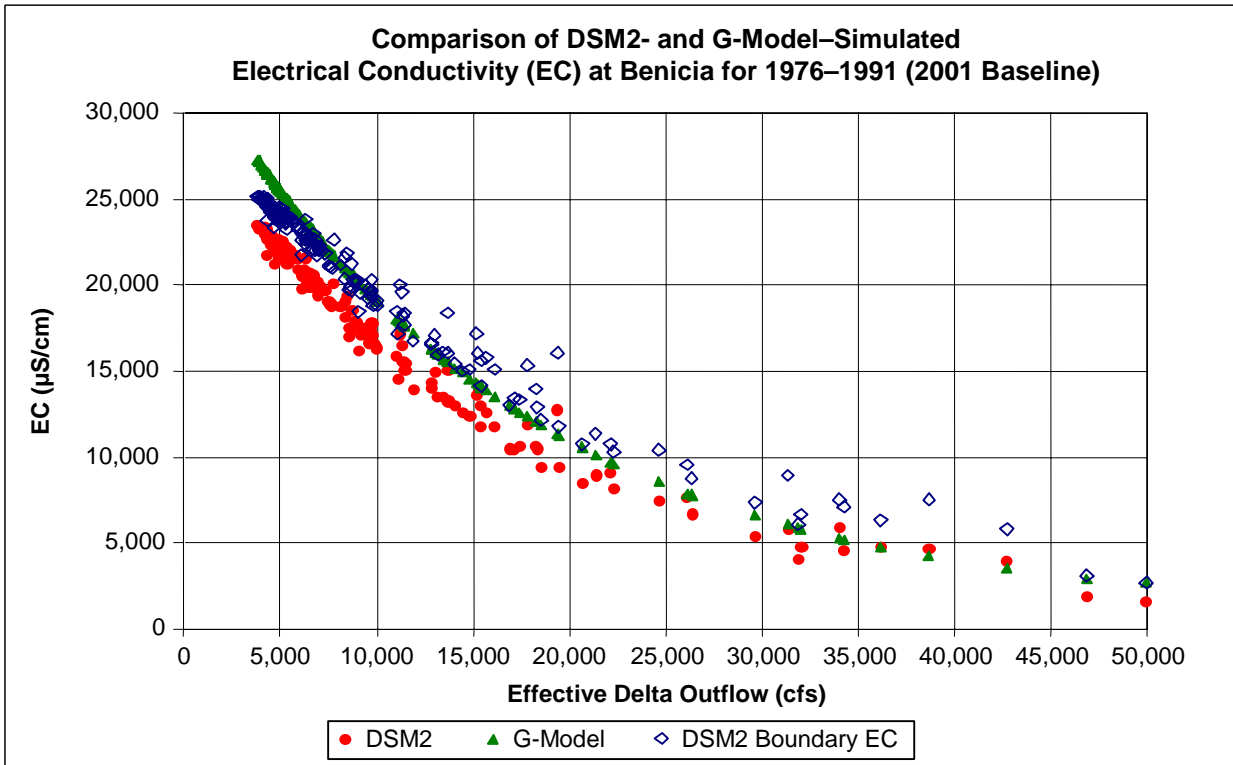
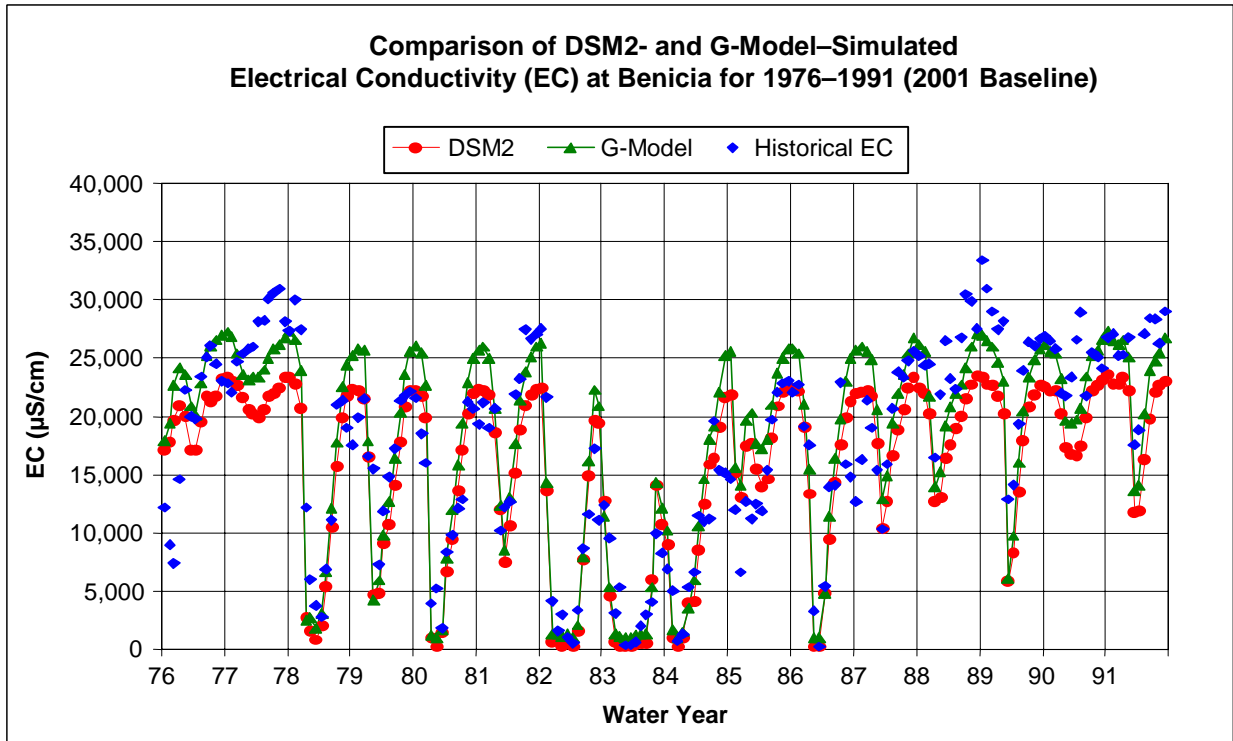
02053.02.101



02053.02.101

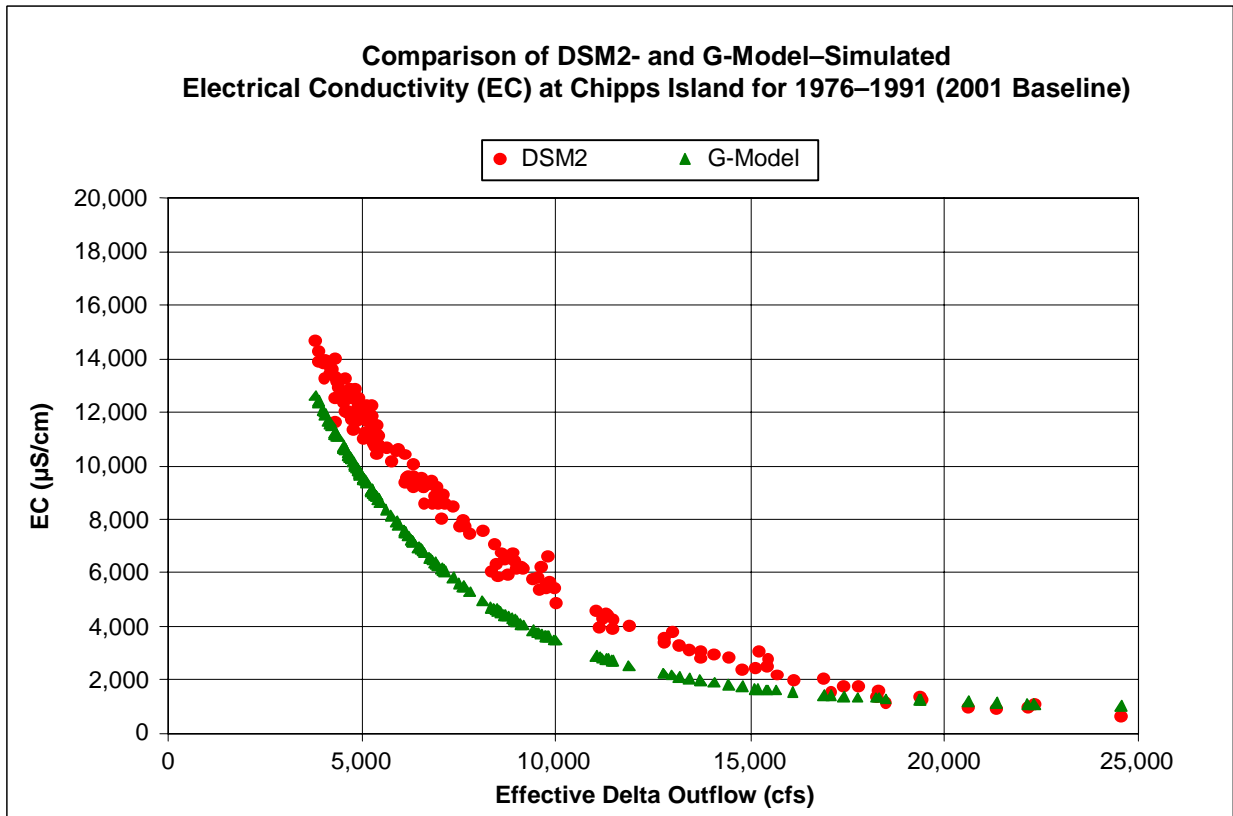
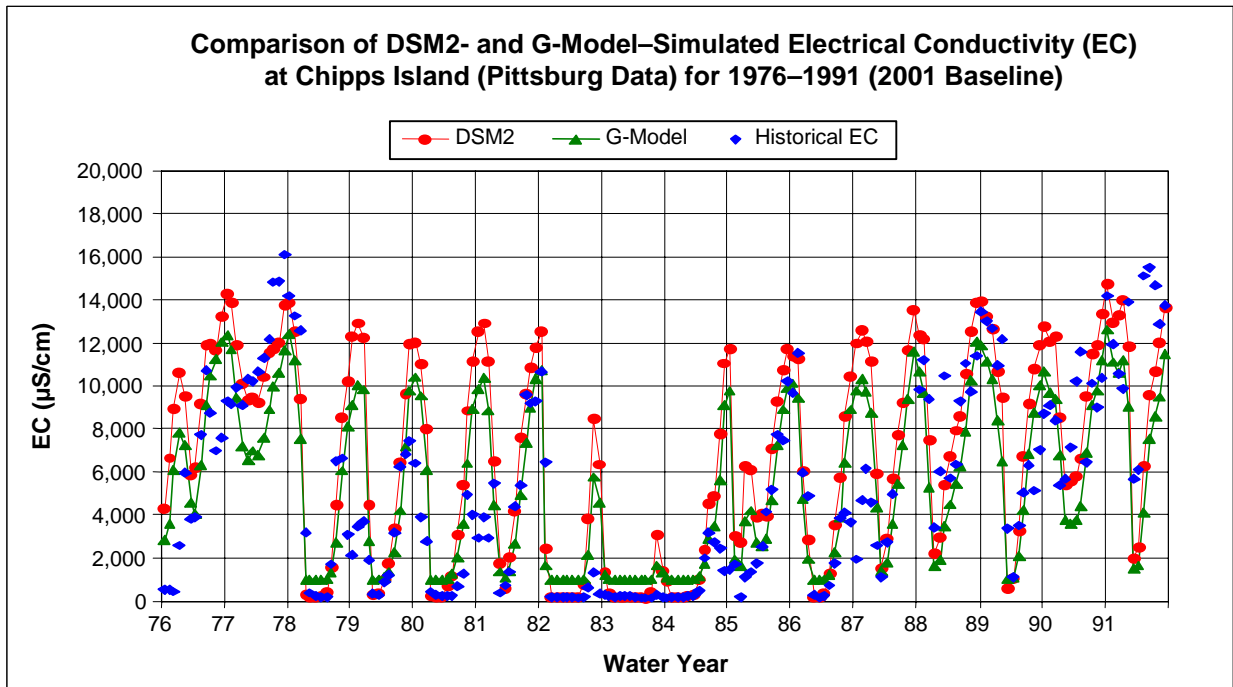


02053.02.101



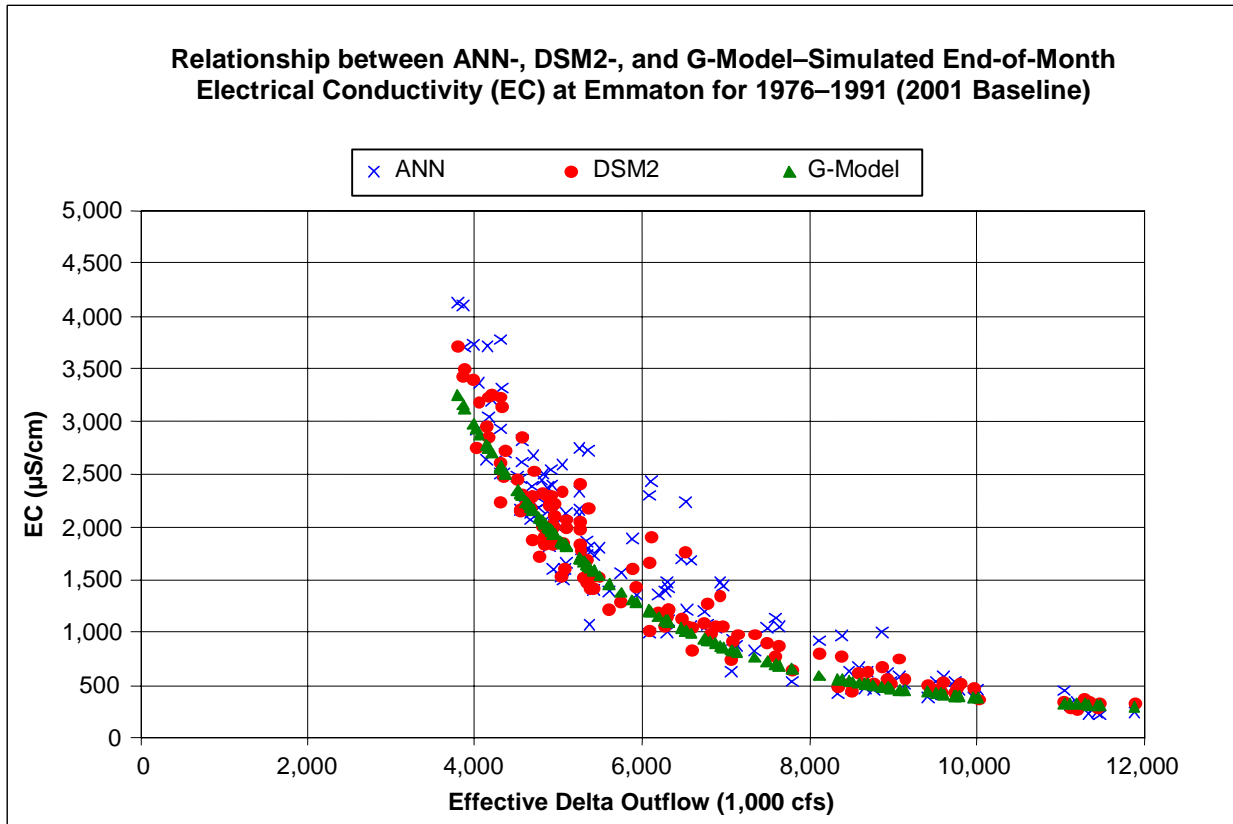
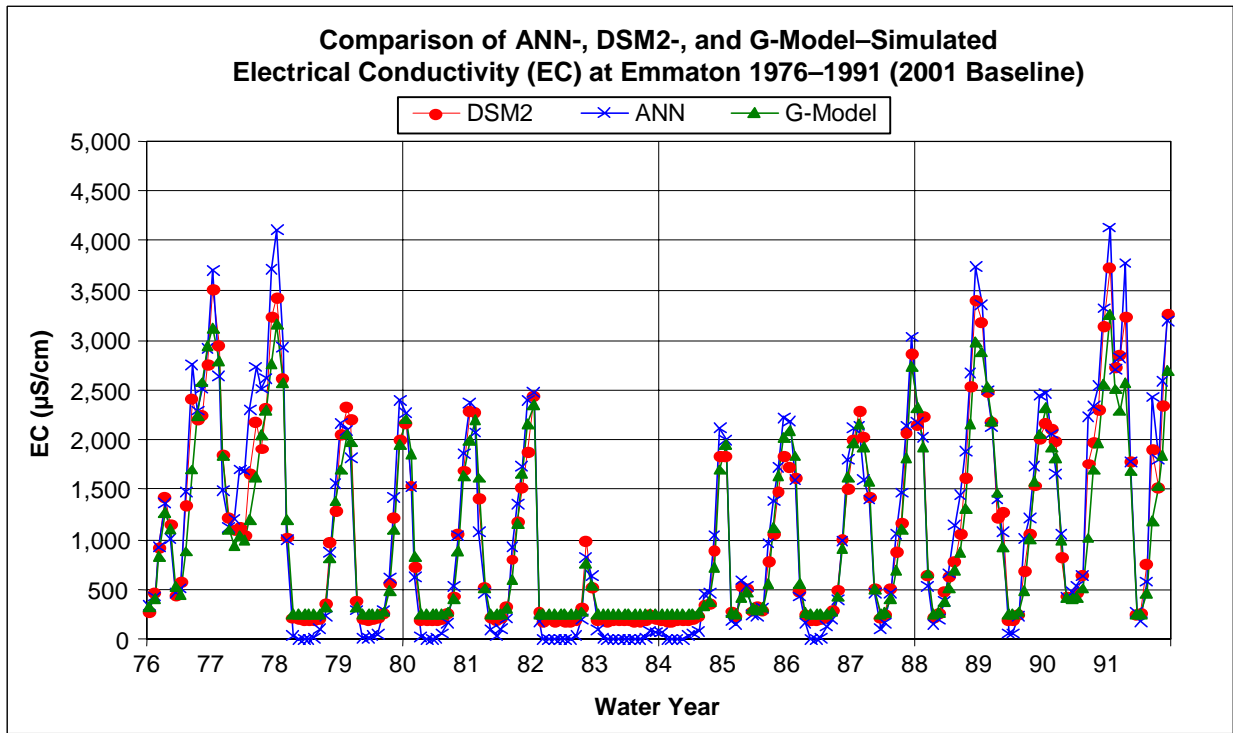
02053.02.101

Comparison of DSM2-Simulated Electrical Conductivity (EC) at Benicia and EC Estimates from Effective Outflow for 2001 Baseline with Historical EC for 1976–1991

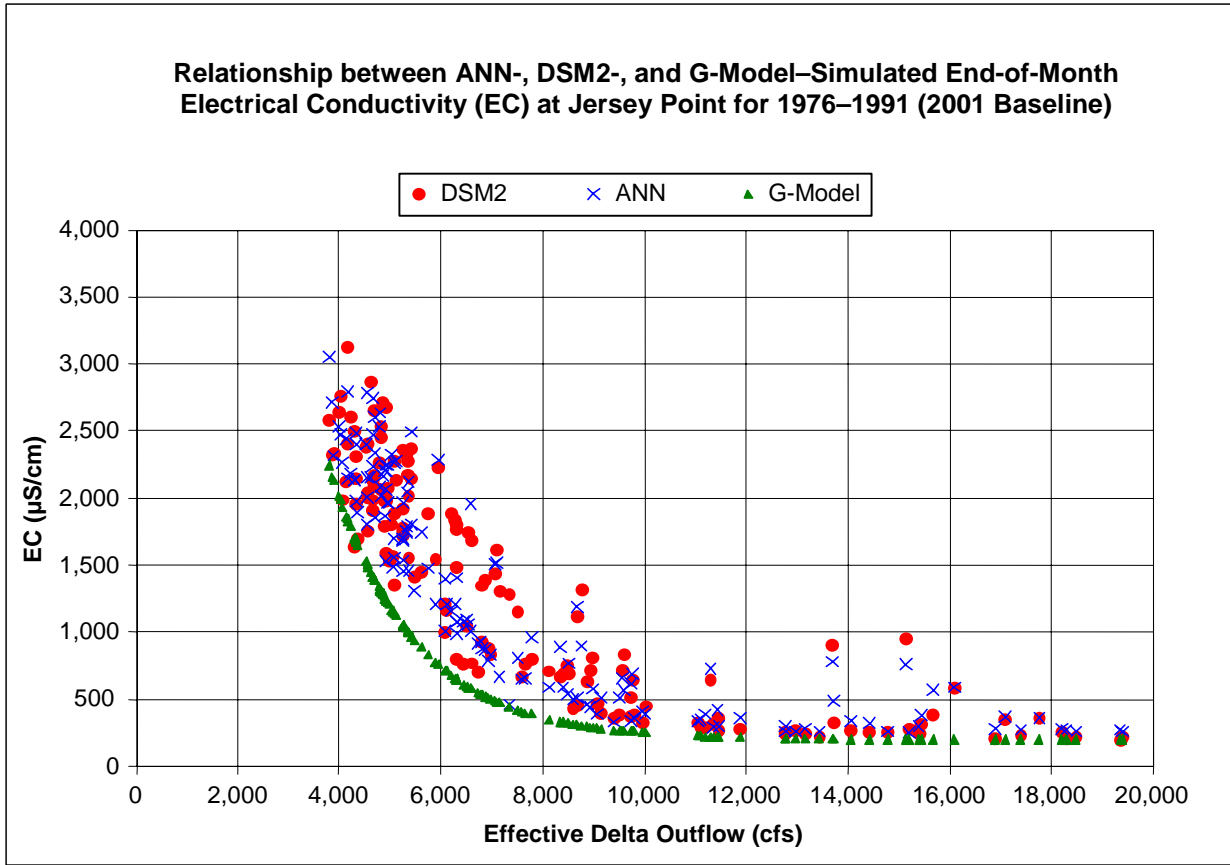
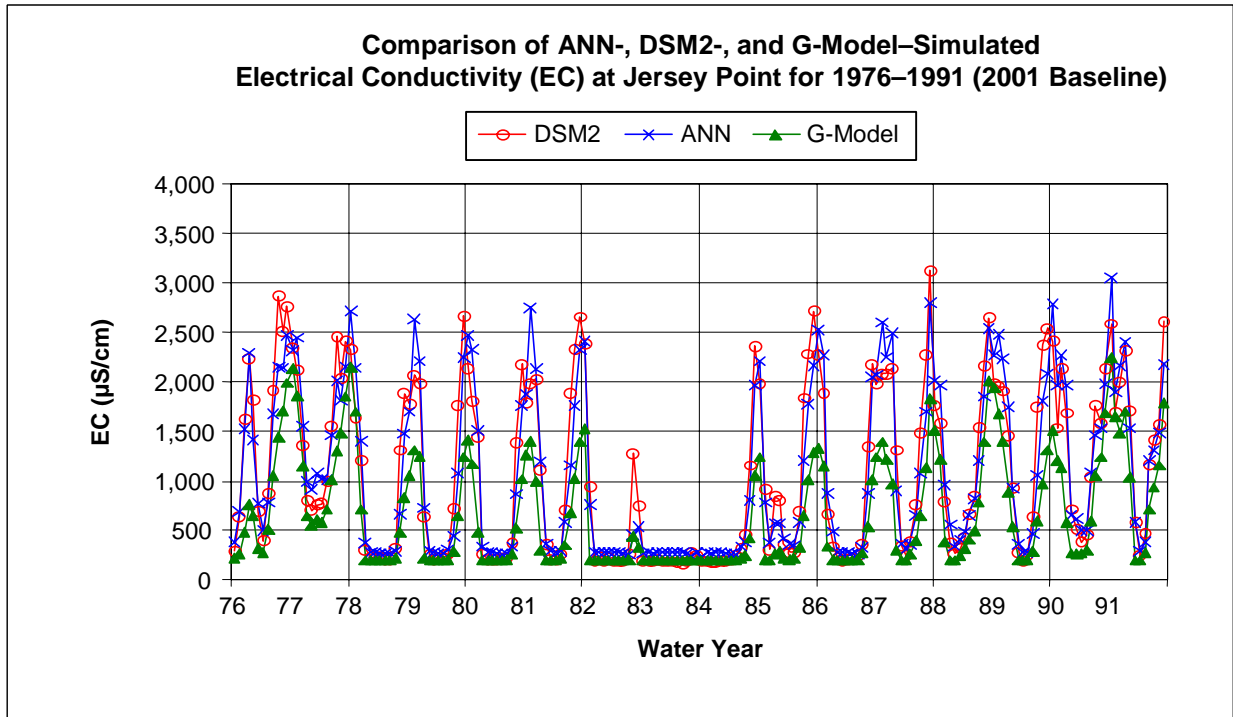


02053.02.101

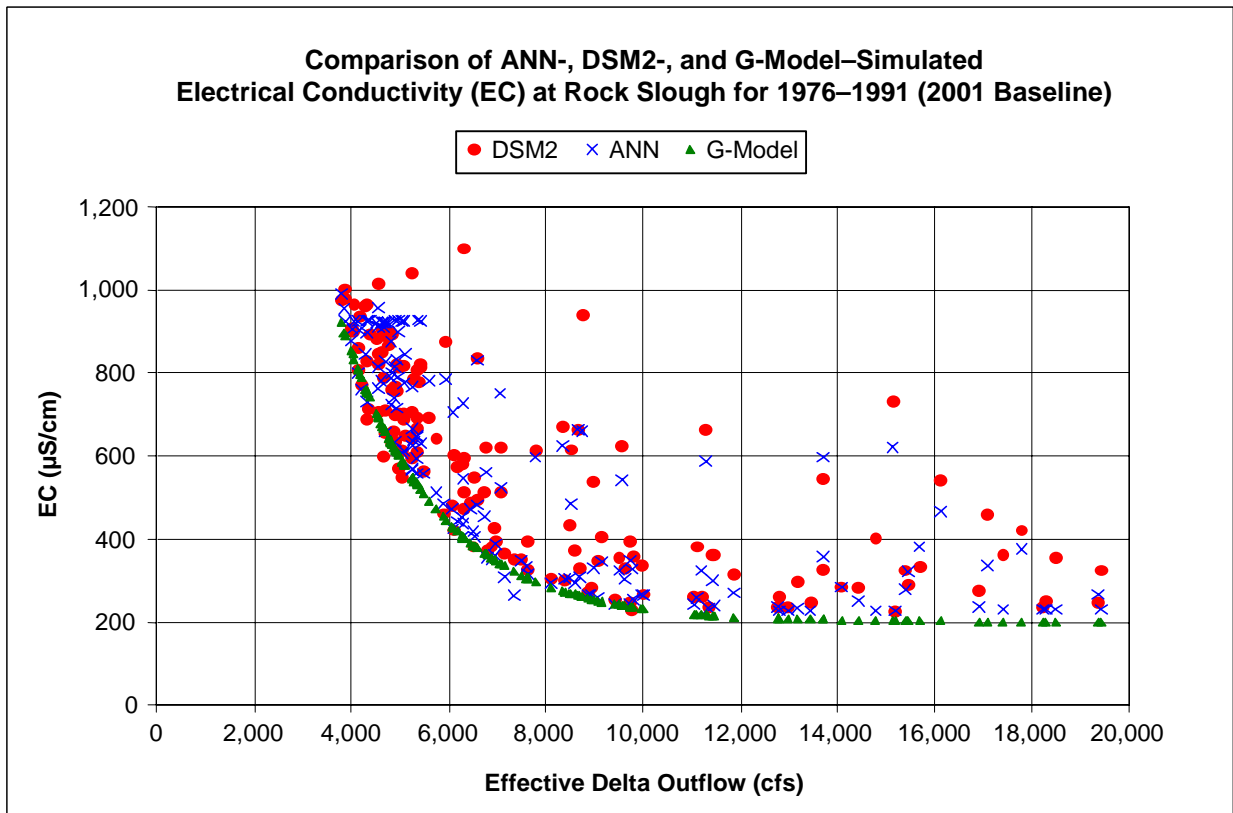
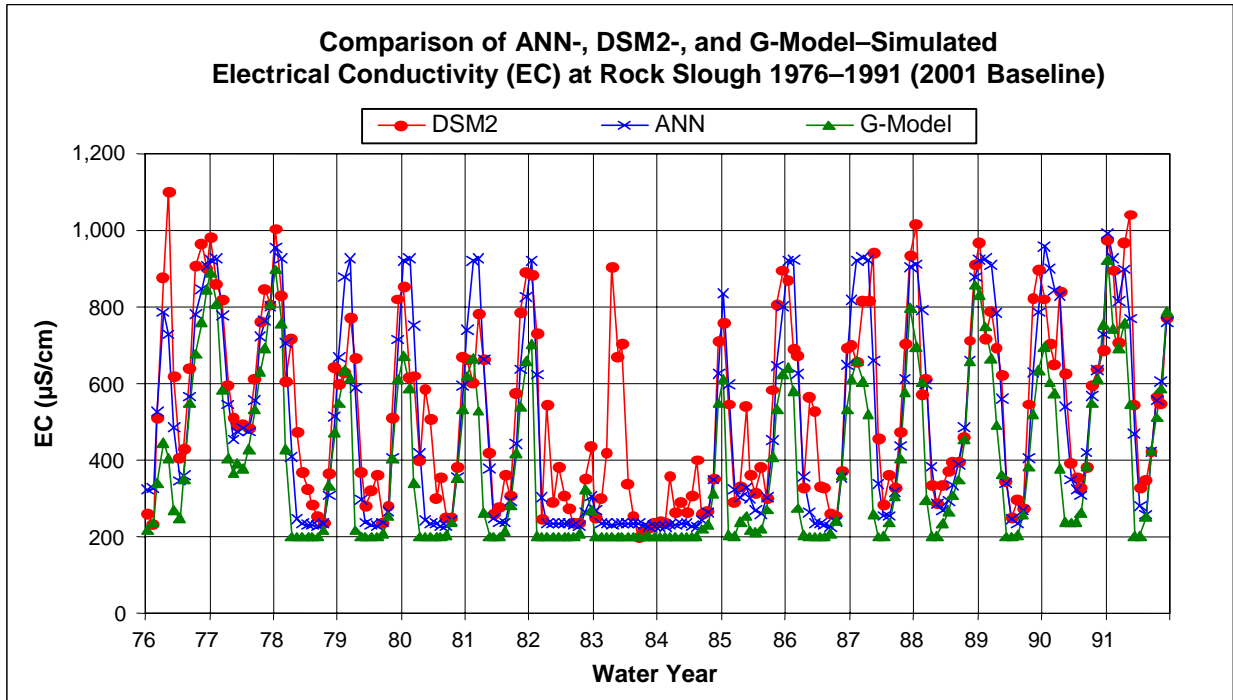
Comparison of DSM2-Simulated Electrical Conductivity (EC) at Chipps Island and EC Estimates from Effective Outflow for 2001 Baseline with Historical EC for 1976–1991



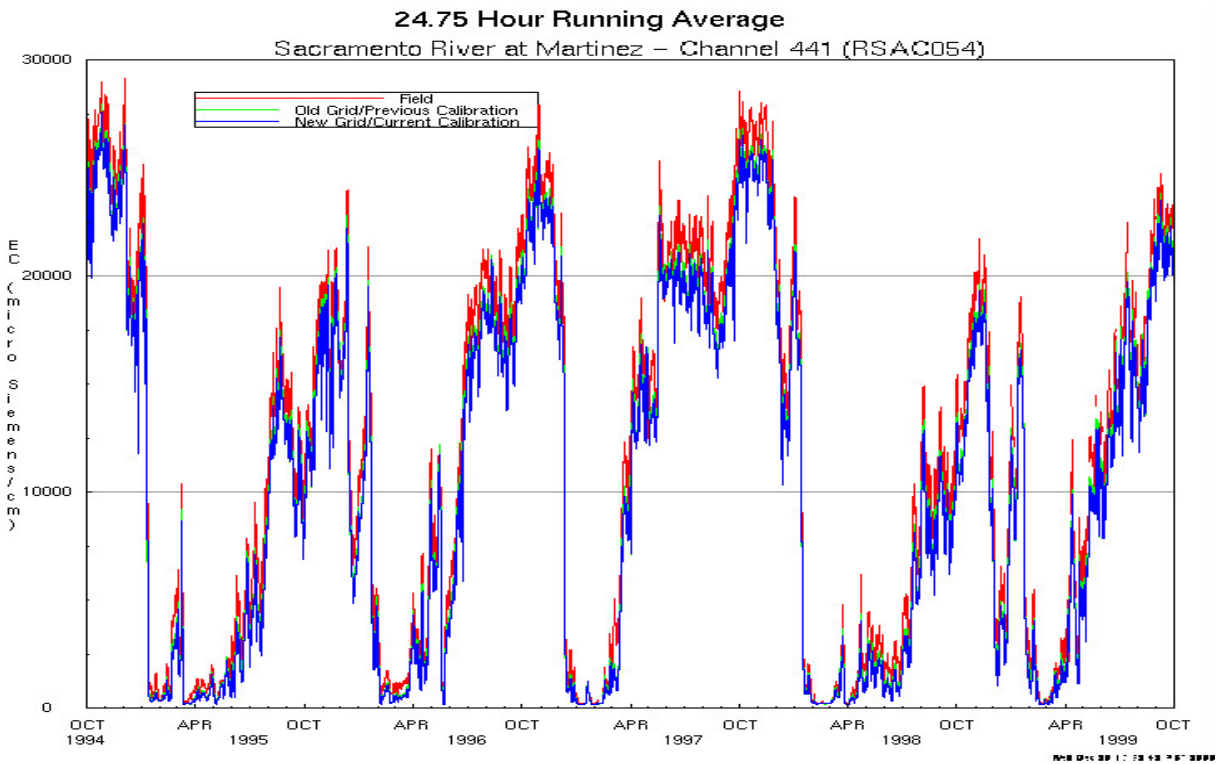
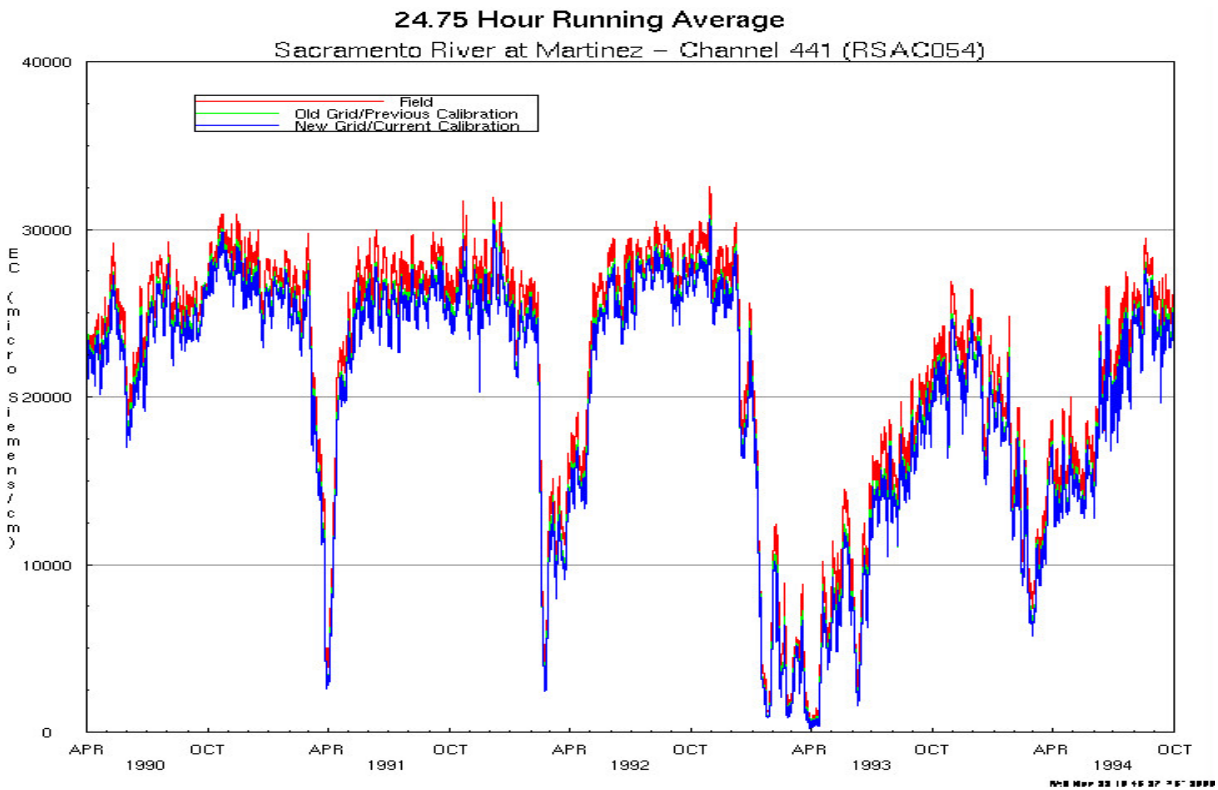
02053.02.101



02053.02.101

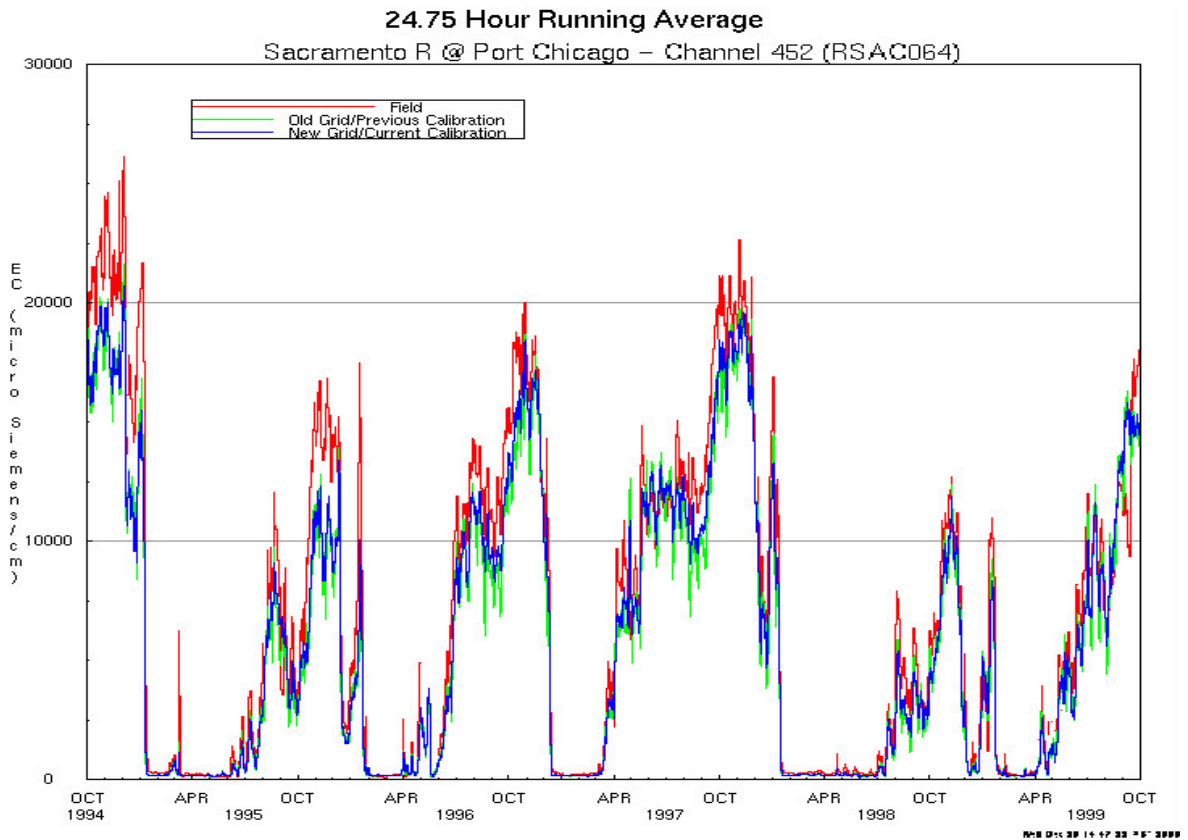
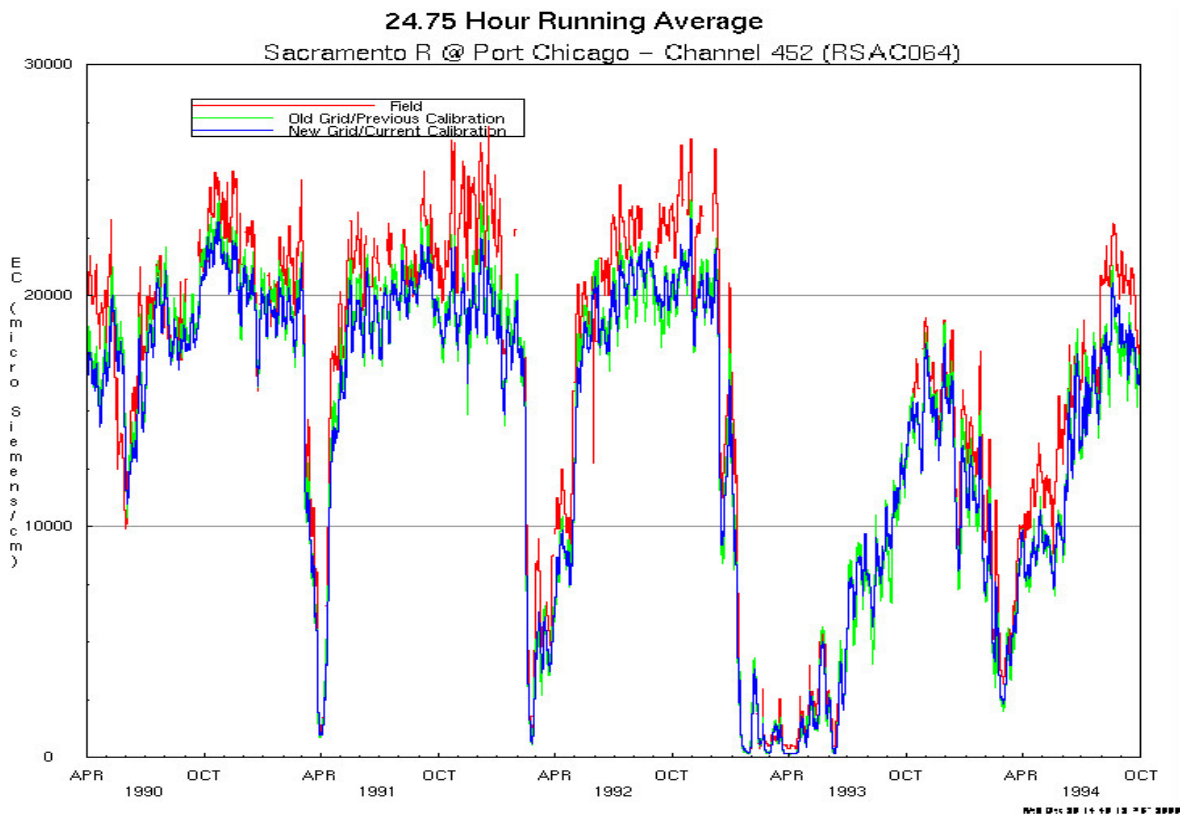


02053.02.101

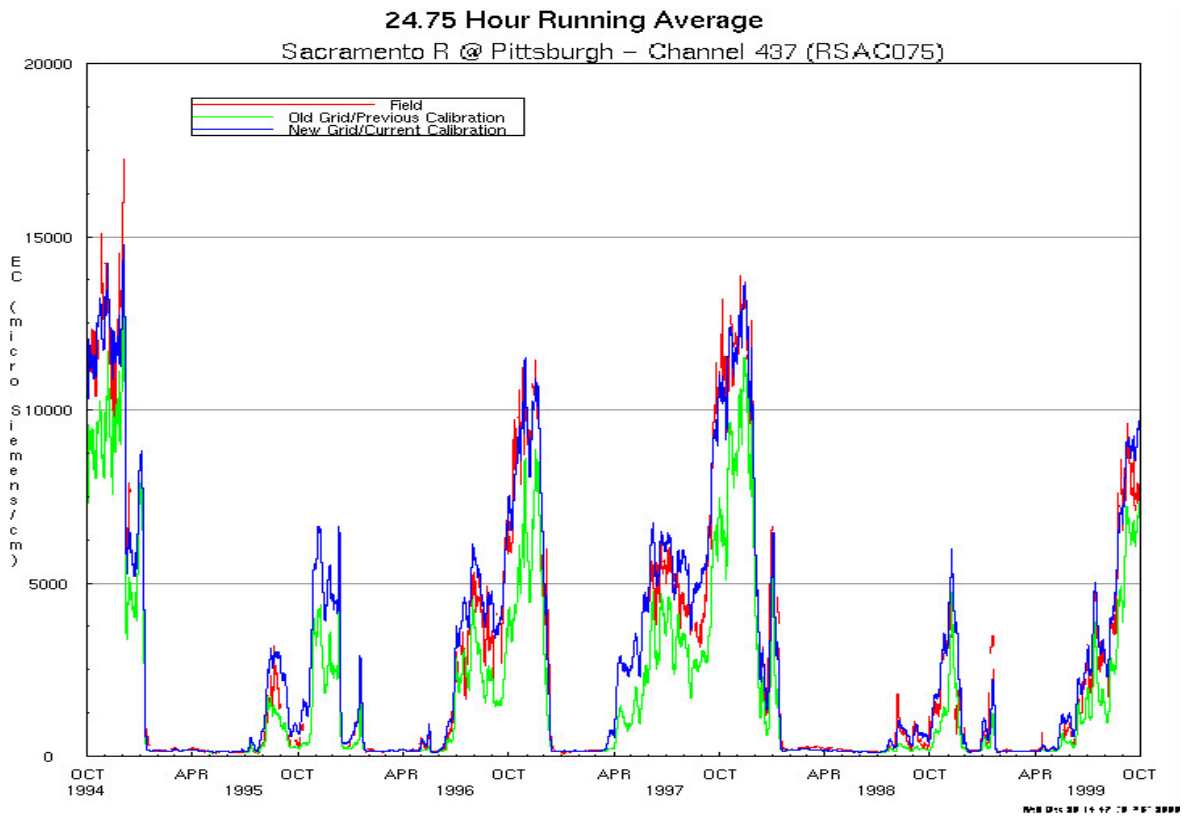
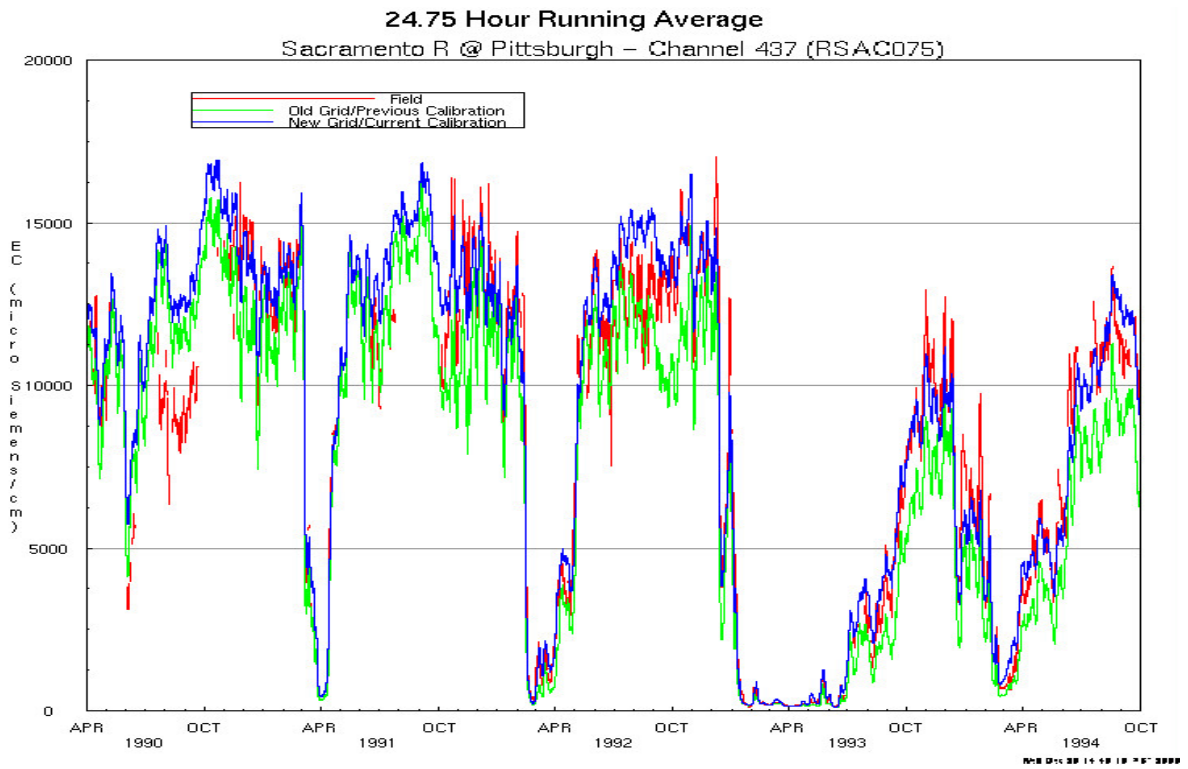


Note: Martinez is the downstream model boundary.

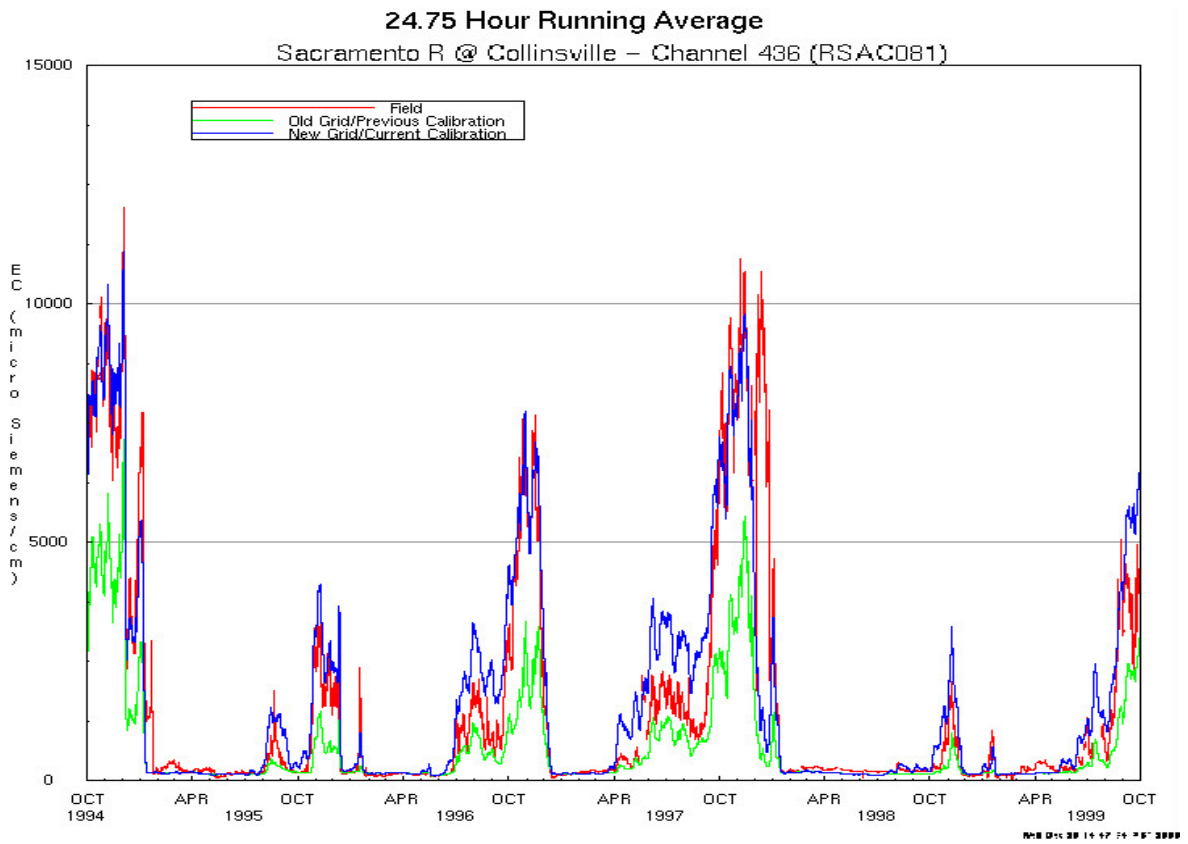
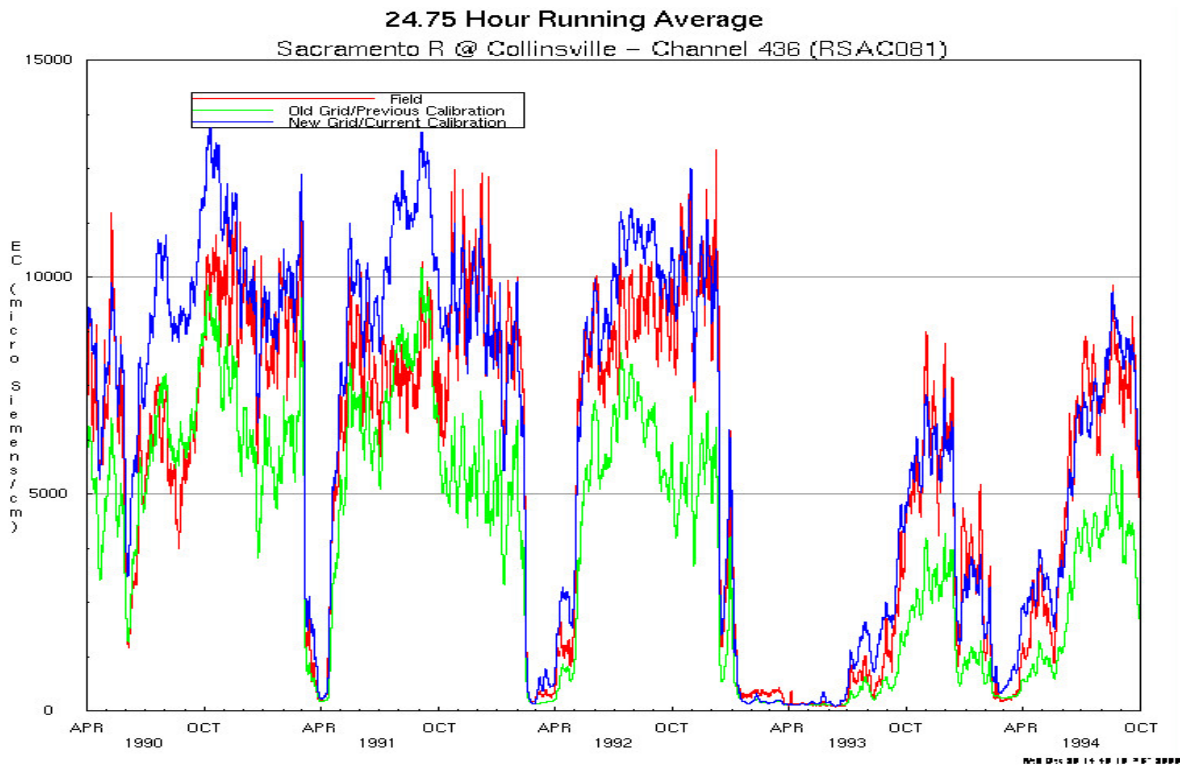
02053.02.101



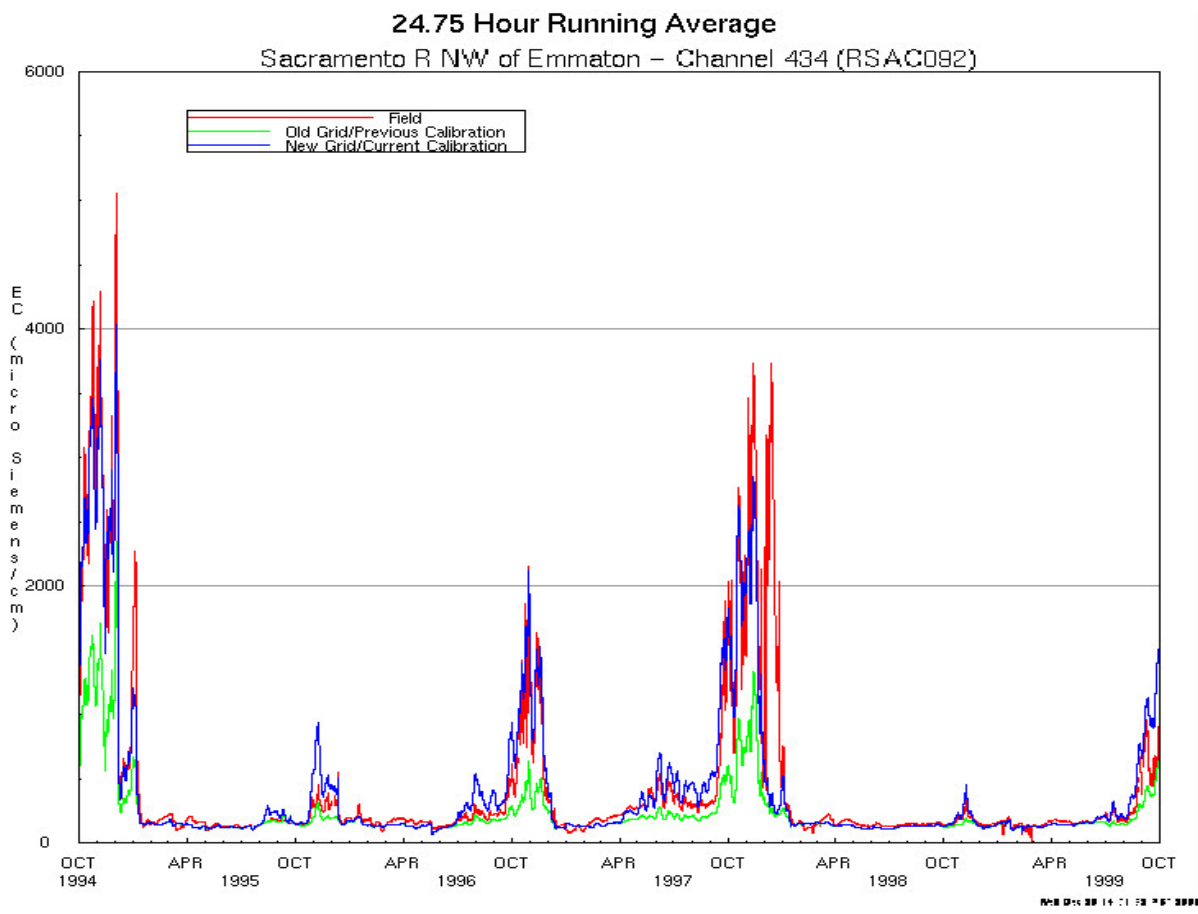
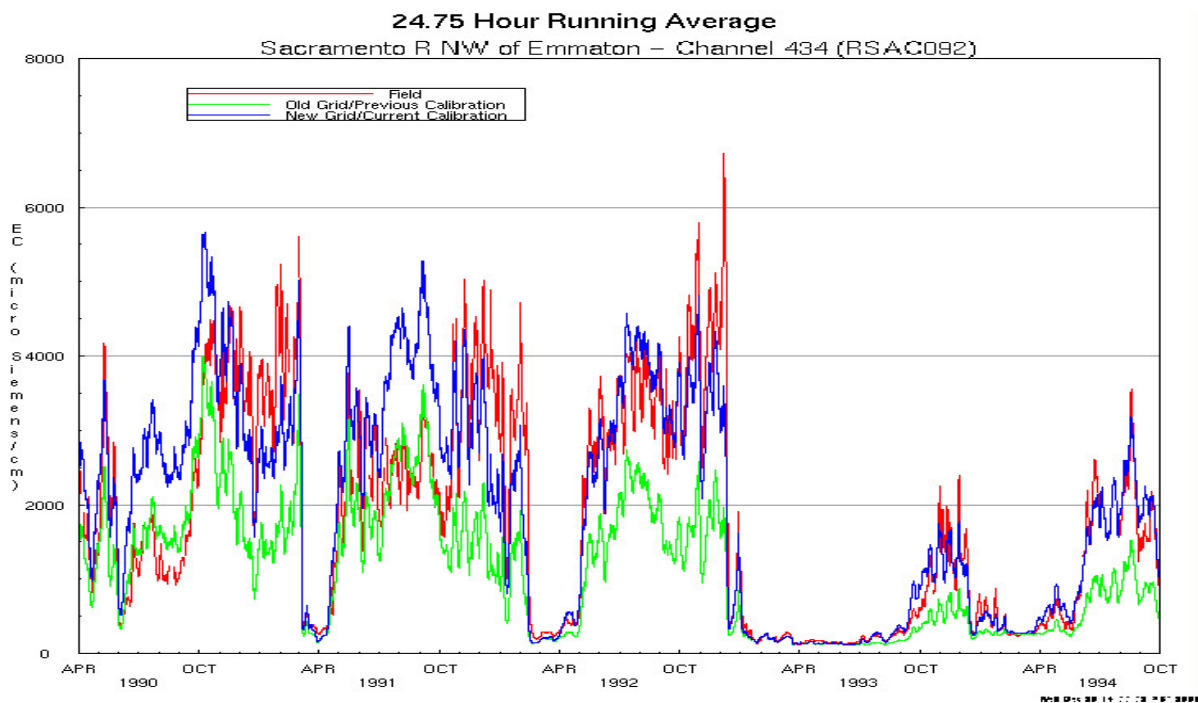
02053.02.101



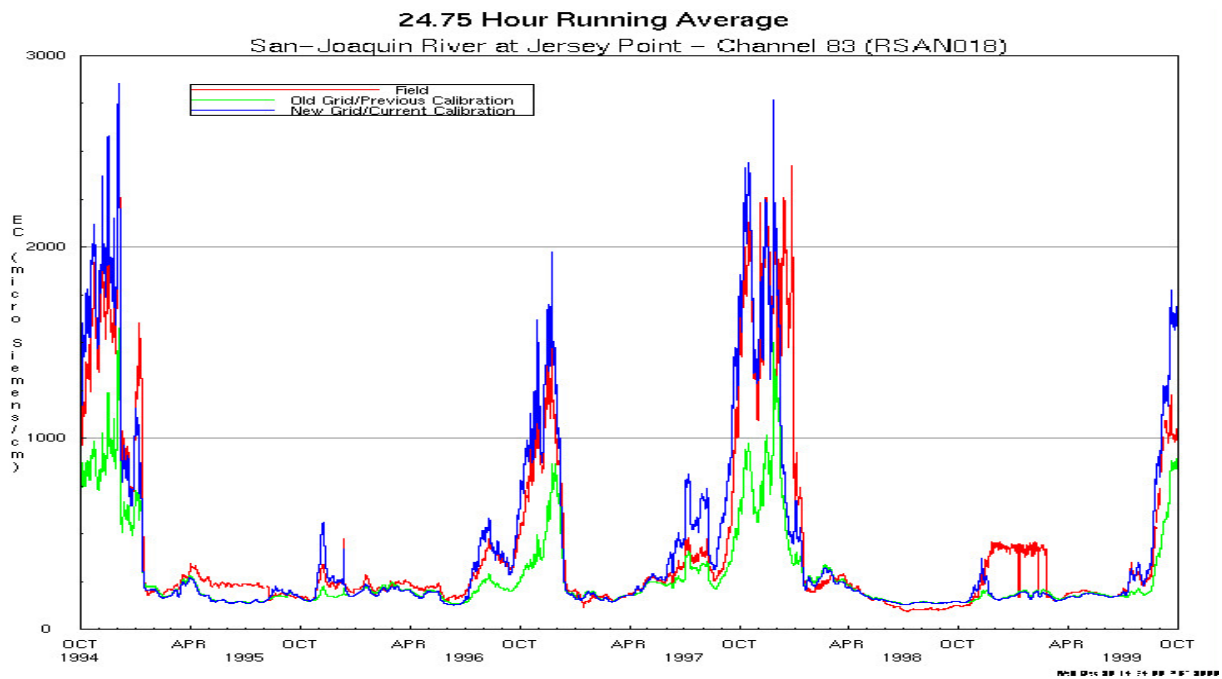
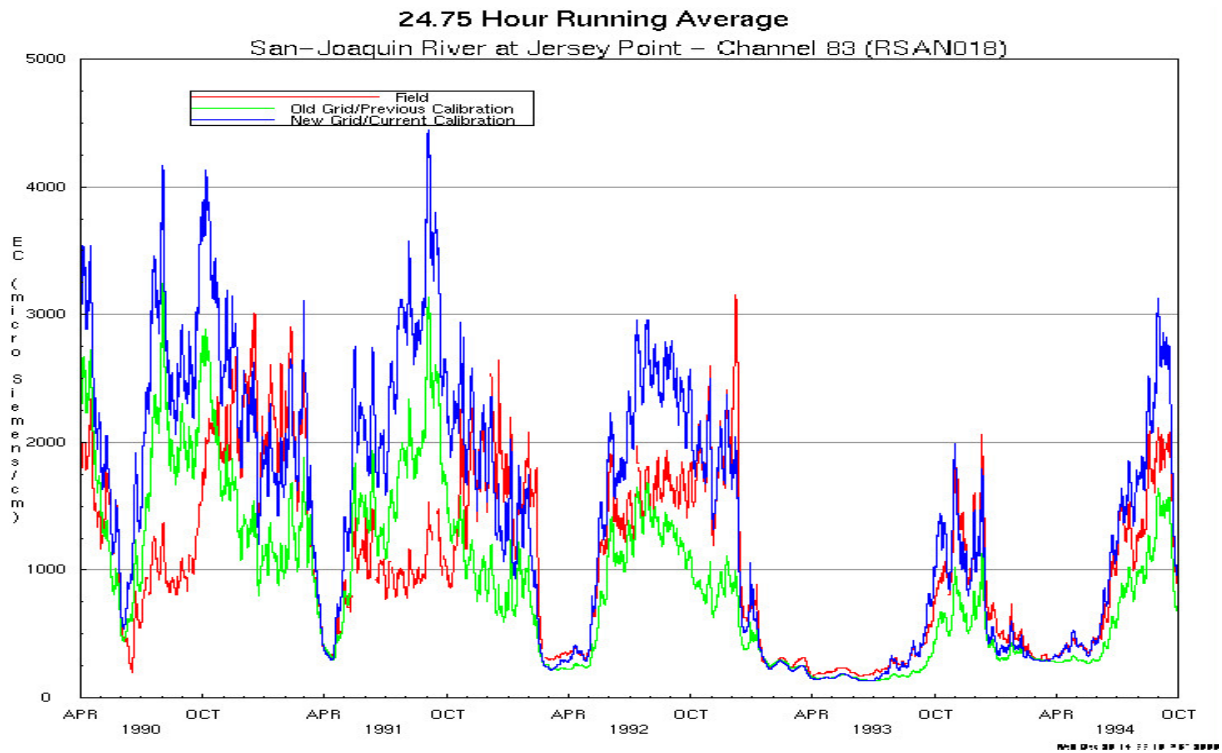
02053.02 101



02053.02 101

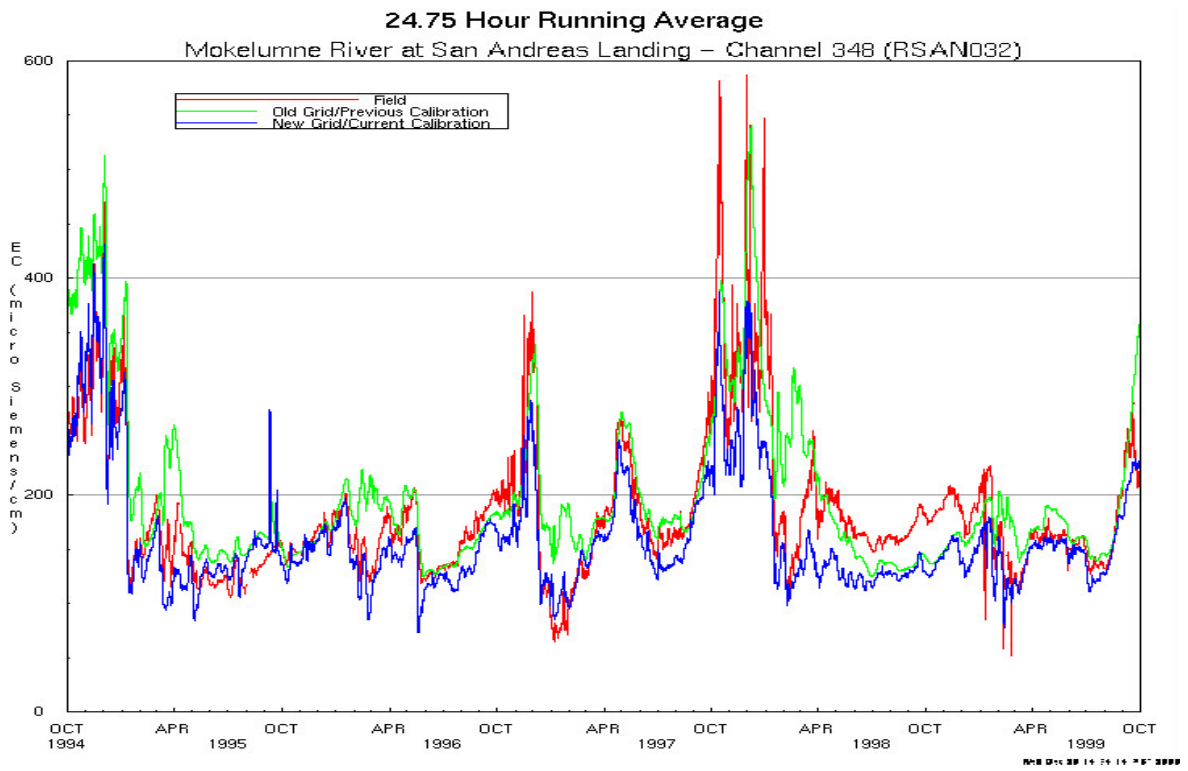
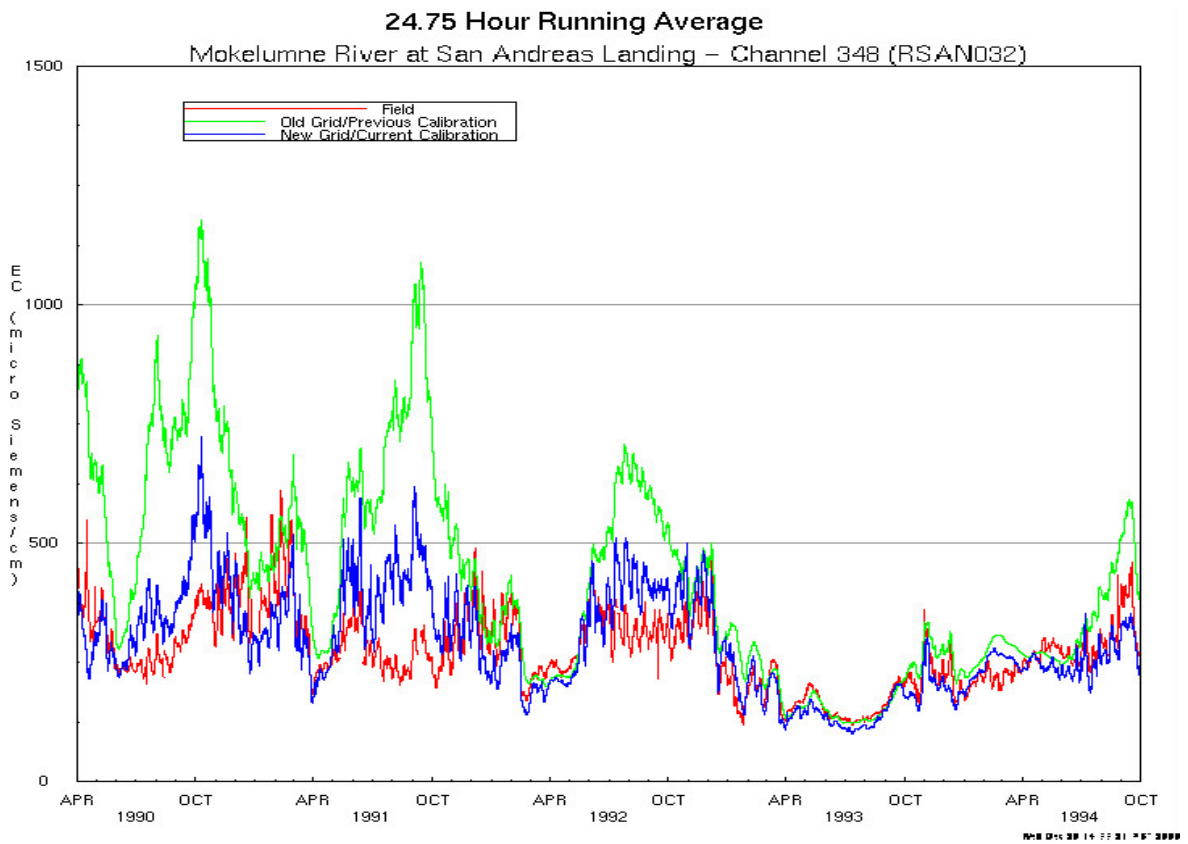


02053.02.101



Note: The DSM2-Simulated daily electrical conductivity at Jersey Point for 1990–1999 did not match well in low-flow years of 1990–1992.

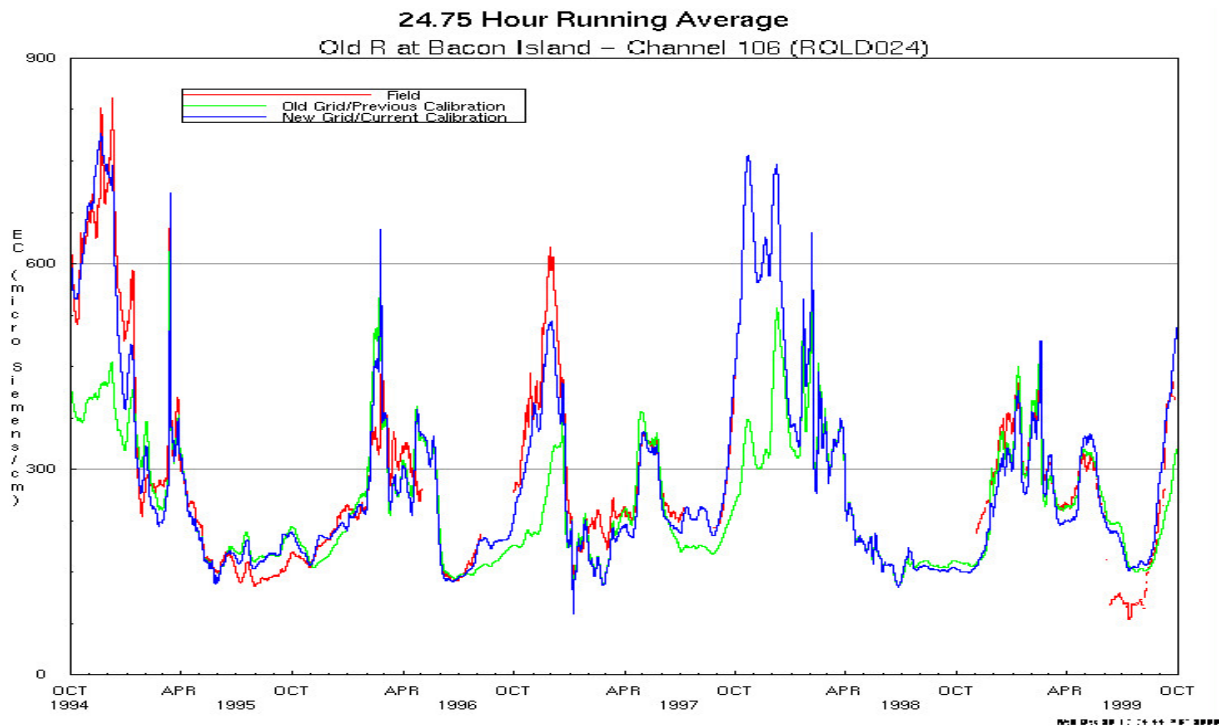
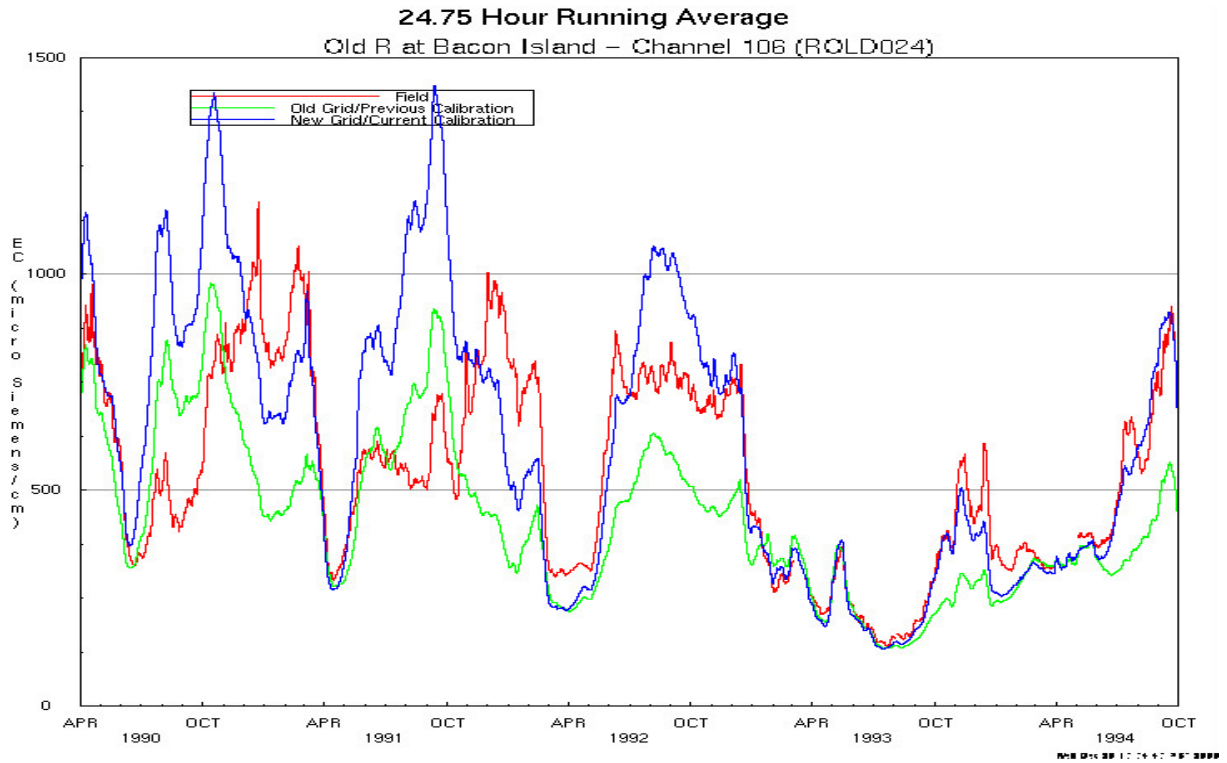
02053.02 101



02053.02.101

Figure D-153

**DSM2-Simulated Daily Electrical Conductivity (EC)
in the San Joaquin River at San Andreas Landing
(Downstream of Mokelumne River)**



02053.02 101