

**SAN LUIS UNIT**

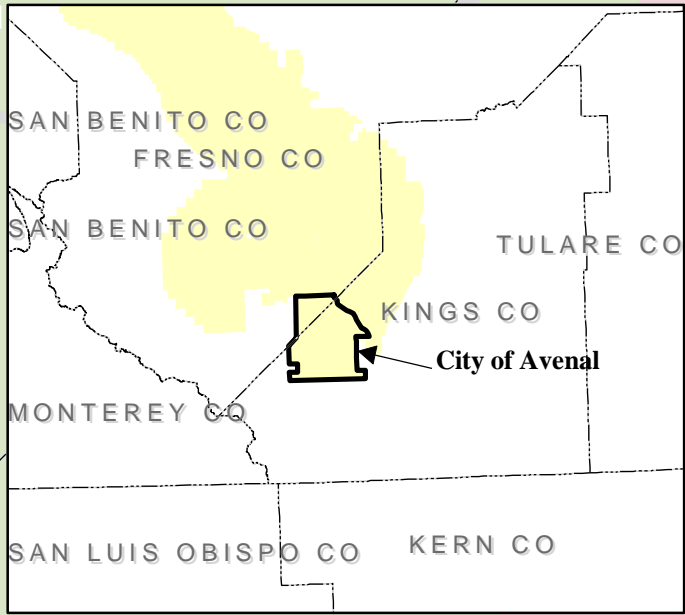
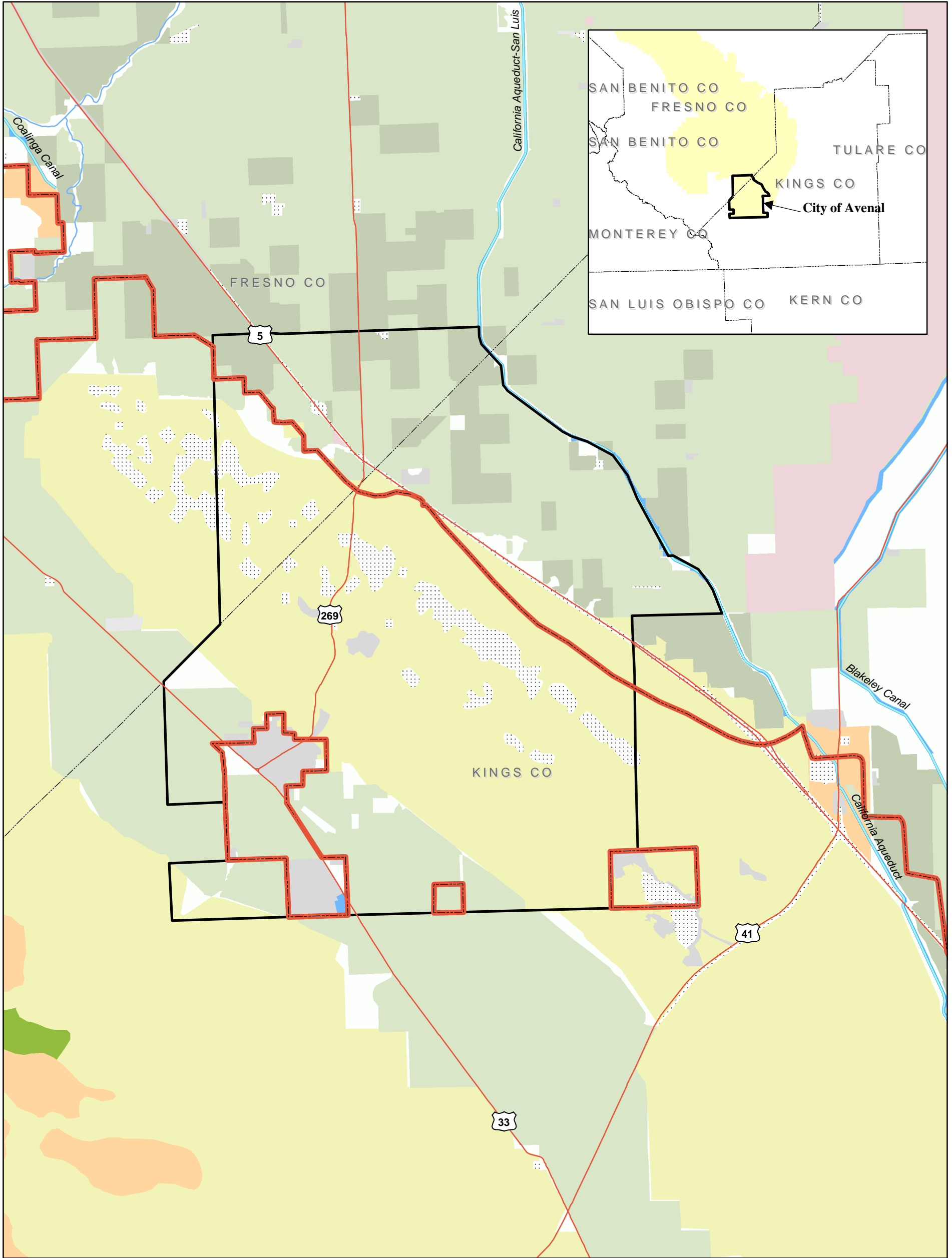
---

**DRAFT ENVIRONMENTAL IMPACT STATEMENT  
LONG-TERM CONTRACT RENEWAL**

**Appendix D  
Endangered Species Recovery Program  
Land Use and Habitat Maps**

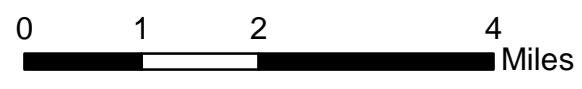
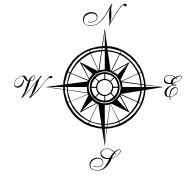
---

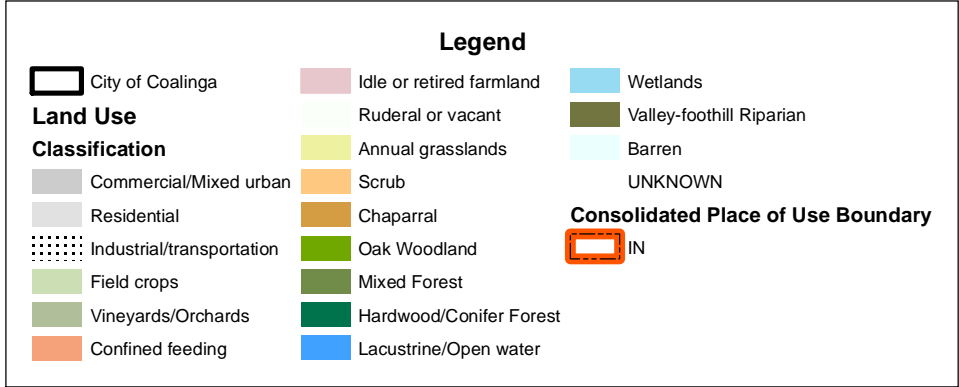
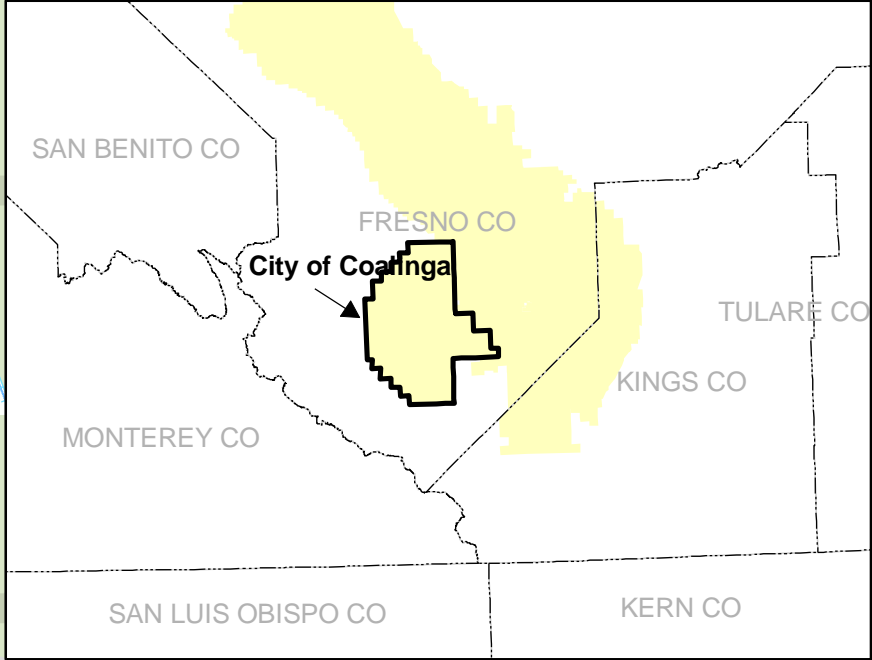
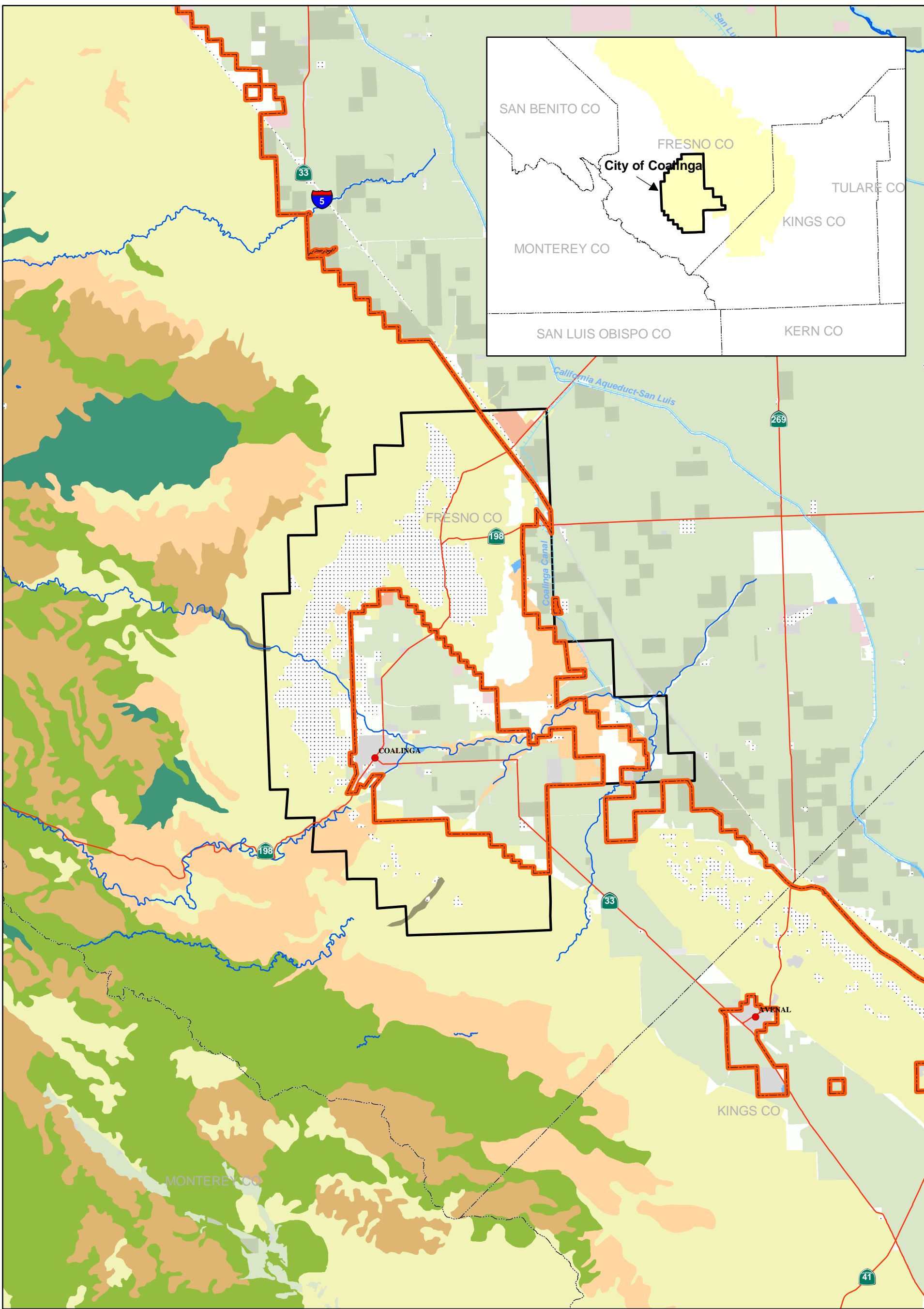
September 2005



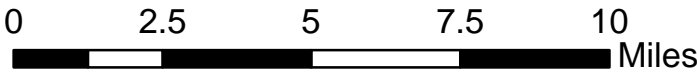
Legend		
City of Avenal	Idle or retired farmland	Wetlands
<b>Land Use Classification</b>	Ruderal or vacant	Valley-foothill Riparian
Commercial/Mixed urban	Annual grasslands	Barren
Residential	Scrub	UNKNOWN
Industrial/transportation	Chaparral	<b>Consolidated Place of Use Boundary</b>
Field crops	Oak Woodland	IN
Vineyards/Orchards	Mixed Forest	
Confined feeding	Hardwood/Conifer Forest	
	Lacustrine/Open water	

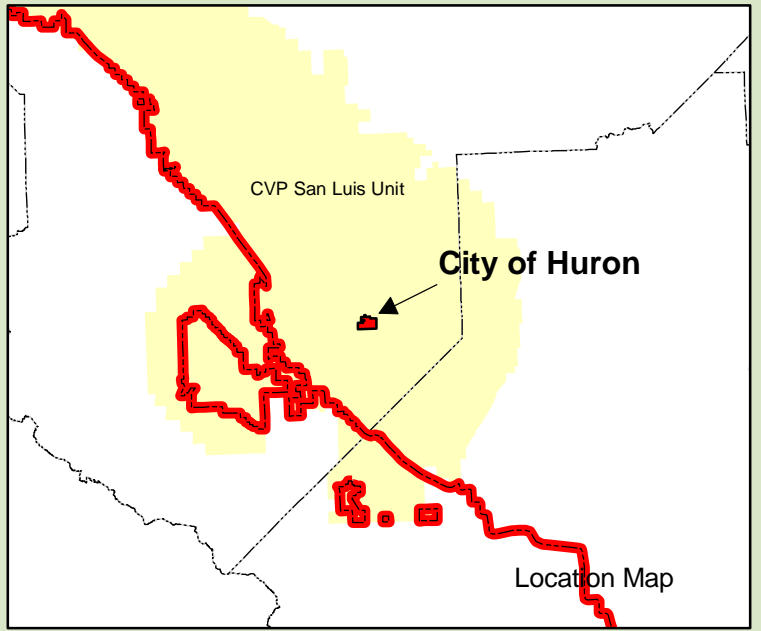
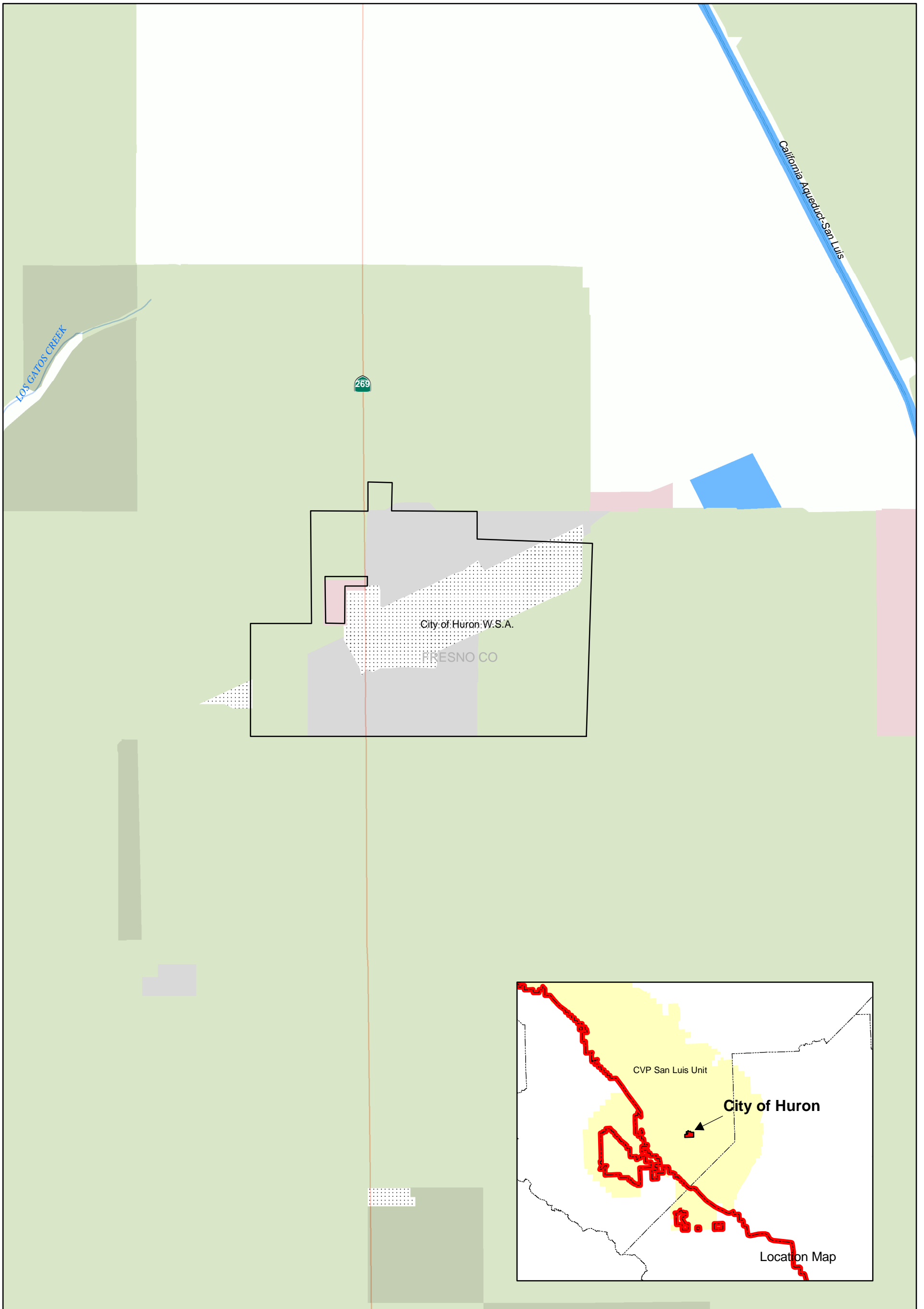
*City of Avenal  
Land Use*





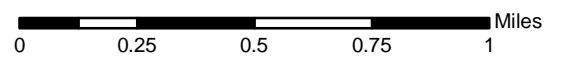
*City of Coalinga WSA  
Land Use*

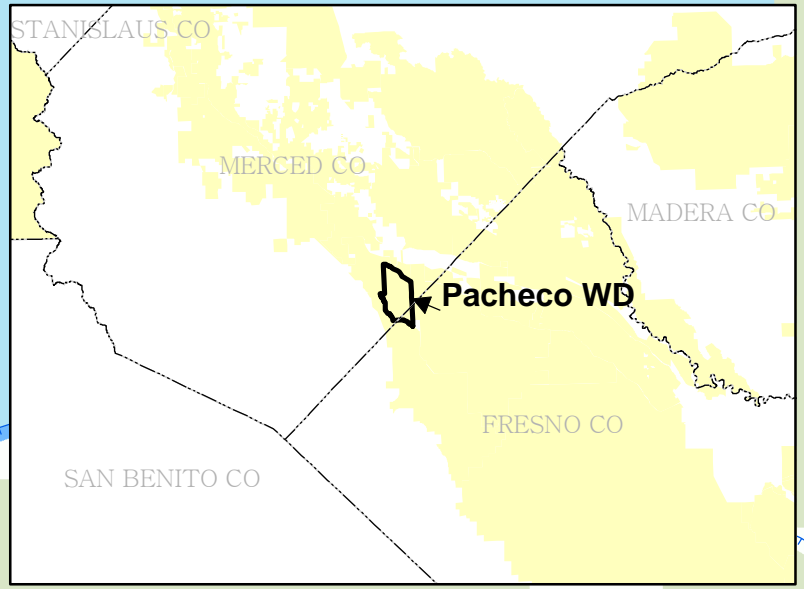
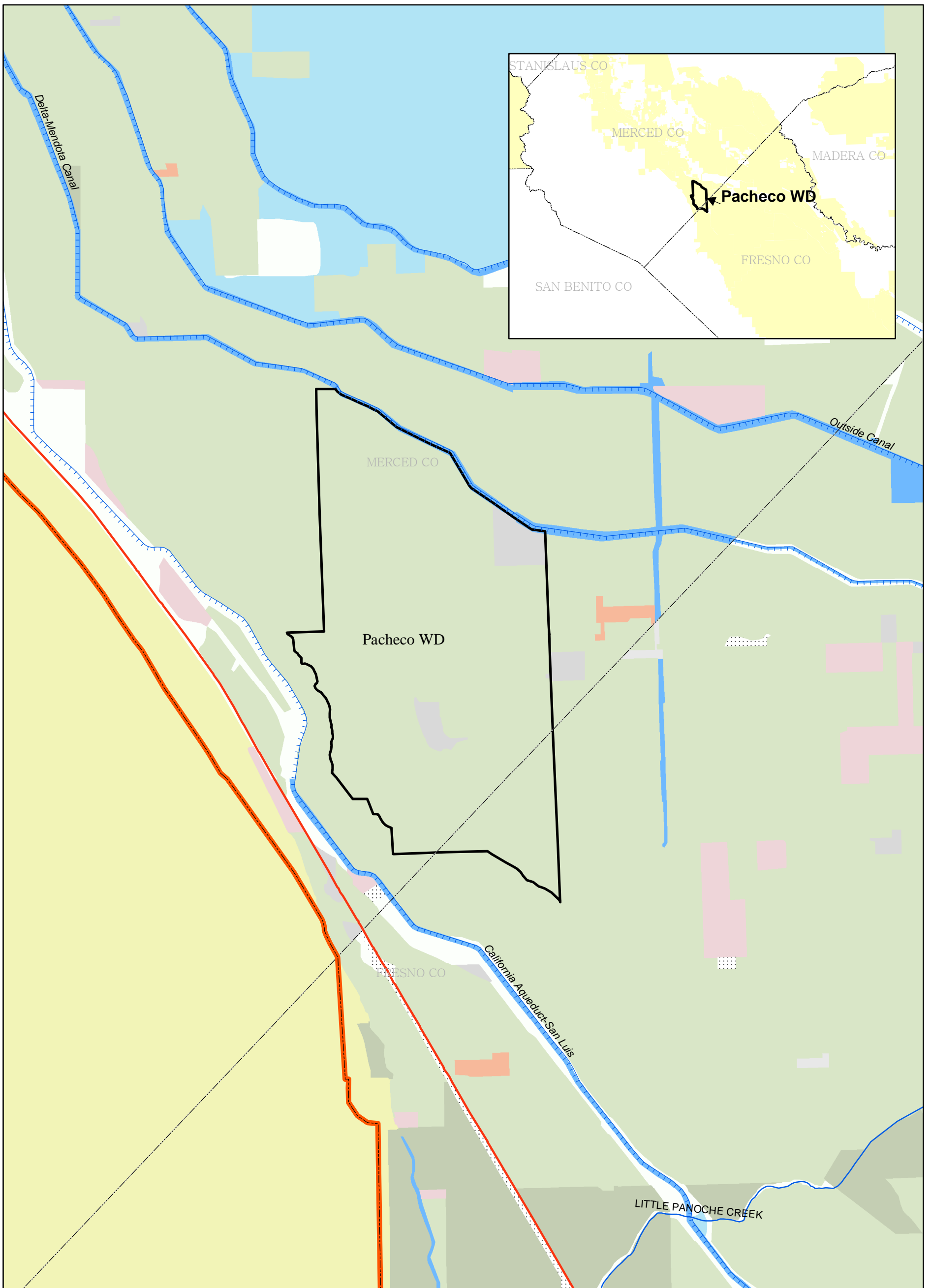




Legend		
	City of Huron	
<b>Land Cover</b>		
<b>Classification</b>		
	Commercial/Mixed urban	
	Residential	
	Industrial/transportation	
	Field crops	UNKNOWN
	Vineyards/Orchards	<b>Consolidated Place of Use Boundary</b>
	Confined feeding	
	Idle or retired farmland	
	Ruderal or vacant	
	Annual grasslands	
	Scrub	
	Chaparral	
	Oak Woodland	
	Mixed Forest	
	Hardwood/Conifer Forest	
	Lacustrine/Open water	

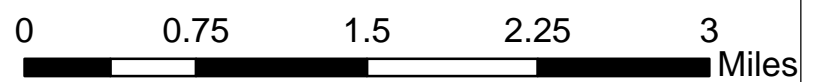
*City of Huron WSA  
Land Use*

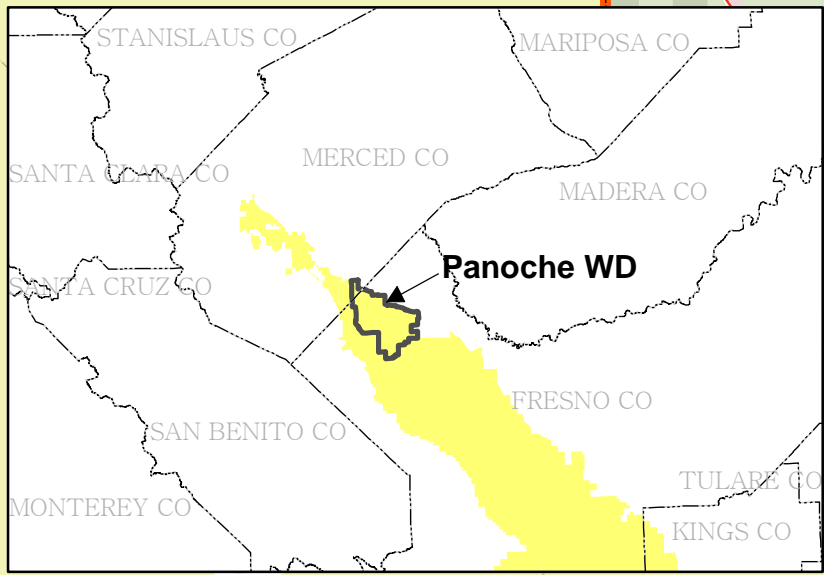
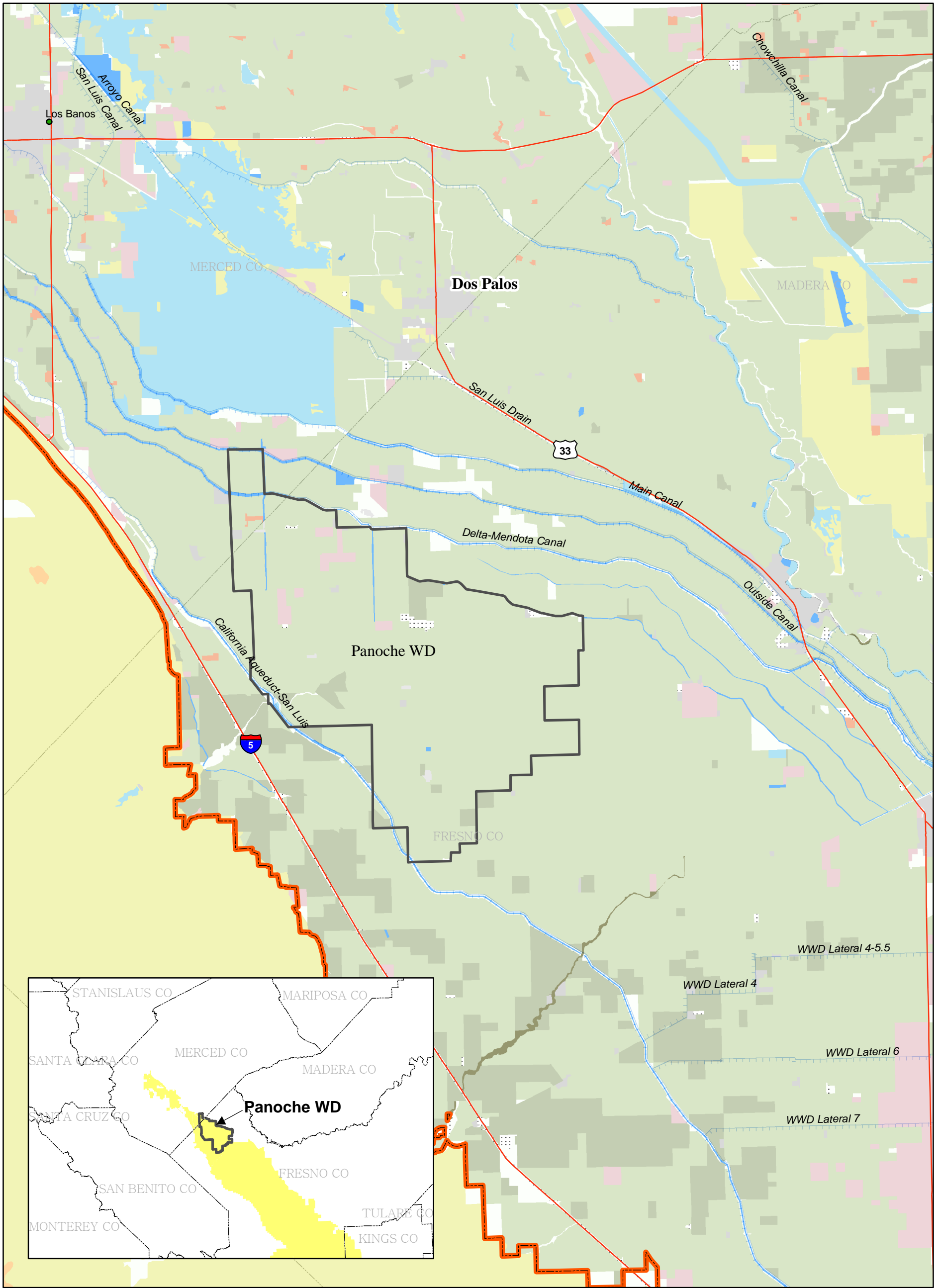




Legend		
Pacheco WD	Idle or retired farmland	Wetlands
<b>Land Cover</b>	Ruderal or vacant	Valley-foothill Riparian
<b>Classification</b>	Annual grasslands	Barren
Commercial/Mixed urban	Scrub	UNKNOWN
Residential	Chaparral	<b>Consolidated Place of Use Boundary</b>
Industrial/transportation	Oak Woodland	IN
Field crops	Mixed Forest	
Vineyards/Orchards	Hardwood/Conifer Forest	
Confined feeding	Lacustrine/Open water	

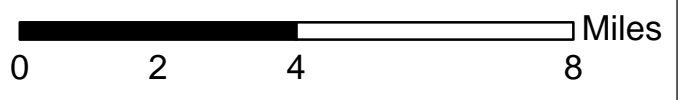
*Pacheco Water District  
Land Use*

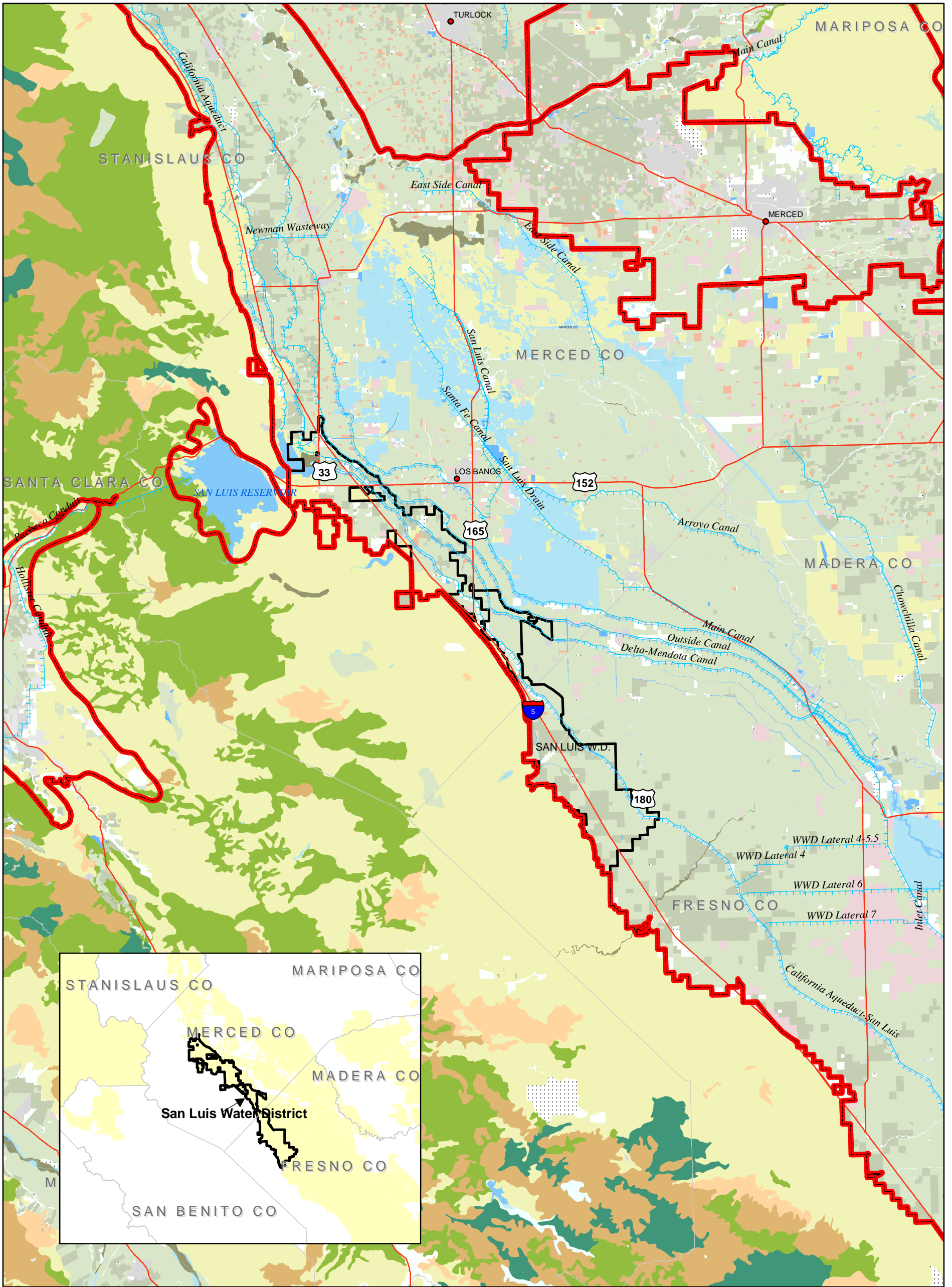




Legend		
Panoche WD	Idle or retired farmland	Wetlands
<b>Land Use Classification</b>	Ruderal or vacant	Valley-foothill Riparian
Commercial/Mixed urban	Annual grasslands	Barren
Residential	Scrub	UNKNOWN
Industrial/transportation	Chaparral	<b>Consolidated Place of Use Boundary</b>
Field crops	Oak Woodland	IN
Vineyards/Orchards	Mixed Forest	
Confined feeding	Hardwood/Conifer Forest	
	Lacustrine/Open water	

*Panoche Water District  
Land Use*

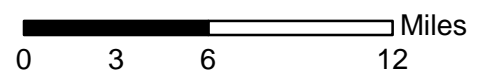


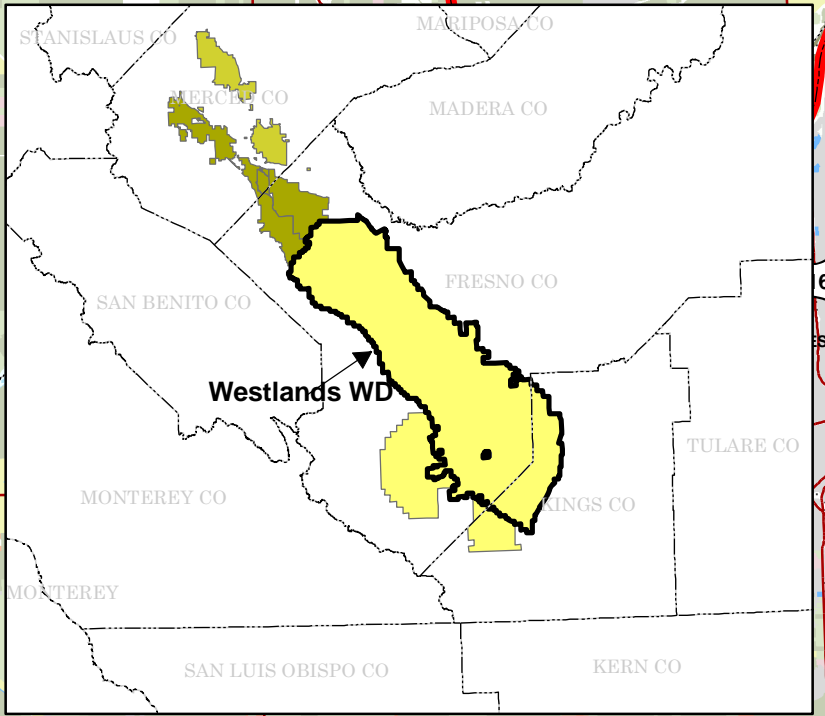
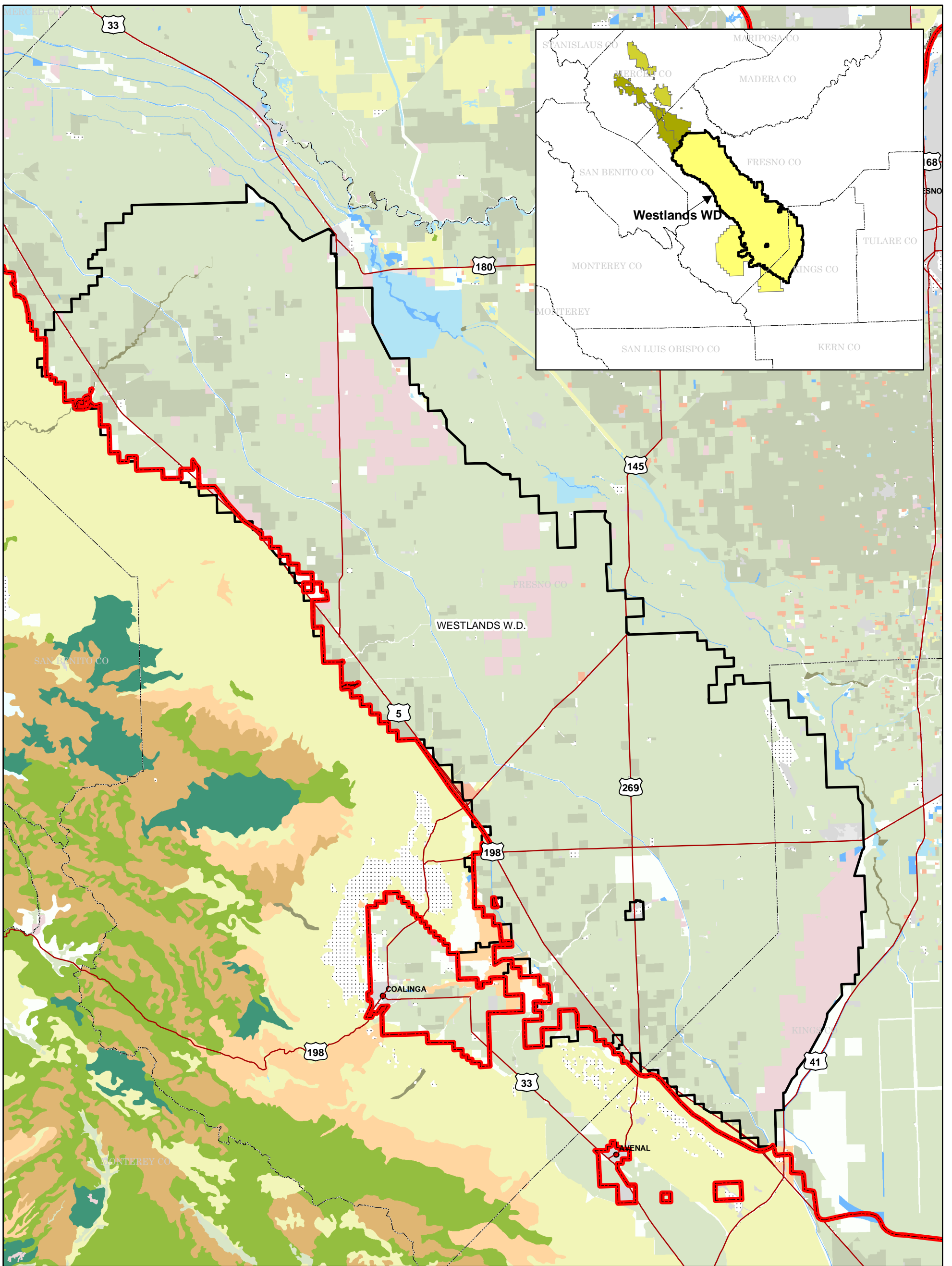


**Legend**

San Luis WD	Idle or retired farmland	Wetlands
<b>Land Cover Classification</b>	Ruderal or vacant	Valley-foothill Riparian
Commercial/Mixed urban	Annual grasslands	Barren
Residential	Scrub	UNKNOWN
Industrial/transportation	Chaparral	<b>Consolidated Place of Use Boundary</b>
Field crops	Oak Woodland	IN
Vineyards/Orchards	Mixed Forest	
Confined feeding	Hardwood/Conifer Forest	
	Lacustrine/Open water	

## San Luis Water District Land Use

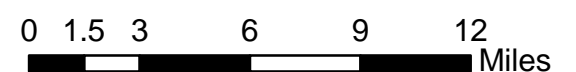




**Legend**

Westlands WD	Idle or retired farmland	Wetlands
<b>Land Cover</b>	Ruderal or vacant	Valley-foothill Riparian
<b>Classification</b>	Annual grasslands	Barren
Commercial/Mixed urban	Scrub	UNKNOWN
Residential	Chaparral	<b>Consolidated Place of Use Boundary</b>
Industrial/transportation	Oak Woodland	IN
Field crops	Mixed Forest	
Vineyards/Orchards	Hardwood/Conifer Forest	
Confined feeding	Lacustrine/Open water	

*Westlands Water District  
Land Use*





**SAN LUIS UNIT**

---

**DRAFT ENVIRONMENTAL IMPACT STATEMENT  
LONG-TERM CONTRACT RENEWAL**

**Appendix E**

**Common and Scientific Names of Plant and Animal Species  
Cited in the Environmental Impact Statement  
and the USFWS' Lists of Listed Species That Could Occur in  
Fresno, Kings, or Merced Counties**

---

September 2005



**Table I-1  
Common and Scientific Names of Fish Species  
Cited in the San Luis Unit Environmental Impact Statement**

<b>Common Name</b>	<b>Scientific Name</b>
American shad	<i>Alosa sapidissima</i>
Bigscale logperch	<i>Percina macrolepida</i>
Black bullhead	<i>Ictalurus melas</i>
Black crappie	<i>Pomoxis nigromaculatus</i>
Bluegill	<i>Lepomis macrochirus</i>
Carp	<i>Cyprinus carpio</i>
Central Valley fall-run chinook salmon	<i>Oncorhynchus tshawytscha</i>
Central Valley steelhead	<i>Oncorhynchus mykiss</i>
Channel catfish	<i>Ictalurus punctatus</i>
Delta smelt	<i>Hypomesus transpacificus</i>
Fathead minnow	<i>Pimephales promelas</i>
Golden shiner	<i>Notemigonus crysoleucas</i>
Goldfish	<i>Carassius auratus</i>
Green sturgeon	<i>Acipenser medirostris</i>
Green sunfish	<i>Lepomis cyanellus</i>
Hardhead	<i>Mylopharodon conocephalus</i>
Hitch	<i>Lavinia exilicauda</i>
Inland silverside	<i>Menidia beryllina</i>
Largemouth bass	<i>Micropterus salmoides</i>
Longfin smelt	<i>Spirinchus thaleichthys</i>
Mosquitofish	<i>Gambusia affinis</i>
Pacific lamprey	<i>Lampetra tridentate</i>
Prickly sculpin	<i>Cottus asper</i>
Red shiner	<i>Cyprinella lutrensis</i>
Redear sunfish	<i>Lepomis microlophus</i>
River lamprey	<i>Lampetra ayresi</i>
Sacramento blackfish	<i>Orthodon microlepidotus</i>
Sacramento pikeminnow	<i>Ptychocheilus grandis</i>
Sacramento splittail	<i>Pogonichthys macrolepidotus</i>
Sacramento sucker	<i>Catostomus occidentalis</i>
Shimofuri goby	<i>Tridentiger bifasciatus</i>
Spotted bass	<i>Micropterus punctulatus</i>
Striped bass	<i>Morone saxatilis</i>
Threadfin shad	<i>Dorosoma petenense</i>
Tule perch	<i>Hysterocarpus traski</i>
Warmouth	<i>Lepomis gulosus</i>
Western mosquitofish	<i>Gambusia affinis</i>
White catfish	<i>Ictalurus catus</i>
White crappie	<i>Pomoxis annularis</i>
White sturgeon	<i>Acipenser transmontanus</i>

**Table I-2  
Common and Scientific Names of Plant Species  
Cited in the San Luis Unit Environmental Impact Statement**

<b>Common Name</b>	<b>Scientific Name</b>	<b>Growth Habit</b>	<b>Family</b>
Alkali blite	<i>Suaeda moquini</i>	AH	Chenopodiaceae
Alkali goldenbush	<i>Isocoma acradenia</i>	S	Asteraceae
Alkali heath	<i>Frankenia salina</i>	PH	Frankeniaceae
Alkali heliotrope	<i>Heliotropium curassavicum oculatum</i>	PH	Hydrophyllaceae
Alkali rubber rabbitbrush	<i>Chrysothamnus nauseosus hololeucus</i>	S	Asteraceae
Alkali sacaton	<i>Sporobolus airoides</i>	PG	Poaceae
Alkali weed	<i>Cressa truxillensis vallicola</i>	PH	Convolvulaceae
Allscale	<i>Atriplex polycarpa</i>	S	Chenopodiaceae
Arburua Ranch jewelflower	<i>Streptanthus insignis ssp. lyonii</i>	AH	Brassicaceae
Arrow weed	<i>Pluchea sericea</i>	S	Asteraceae
Arrowgrass	<i>Triglochin maritima</i>	PH	Juncaginaceae
Arroyo willow	<i>Salix lasiolepis</i>	T	Salicaceae
Big saltbush	<i>Atriplex lentiformis lentiformis</i>	S	Chenopodiaceae
Black willow	<i>Salix gooddingii variabilis</i>	T	Salicaceae
Bladderwort	<i>Utricularia</i> spp.	A/PH	Lentibulariaceae
Blue elderberry	<i>Sambucus mexicana</i>	S	Caprifoliaceae
Box elder	<i>Acer negundo californicum</i>	T	Aceraceae
Brittlescale	<i>Atriplex depressa</i>	S	Chenopodiaceae
Button celery	<i>Apium armatum</i>	A/PH	Apiaceae
California blackberry	<i>Rubus vitifolius</i>	S	Rosaceae
California jewelflower	<i>Caulanthus californicus</i>	AH	Brassicaceae
California oatgrass	<i>Danthonia californica</i>	PG	Poaceae
California pipestem clematis	<i>Clematis ligusticifolia</i>	PV	Ranunculaceae
California poppy	<i>Eschscholzia californica californica</i>	AH	Papaveraceae
California sycamore	<i>Platanus racemosa</i>	T	Platanaceae
California wild grape	<i>Vitis californica</i>	PV	Vitaceae
California wild rose	<i>Rosa californica</i>	S	Rosaceae
Cattail	<i>Typha</i> spp.	PH	Typhaceae
Cheesebush	<i>Hymenoclea salsola</i>	S	Asteraceae
Chinese Camp brodiaea	<i>Brodiaea pallida</i>	PH	Amaryllidaceae
Clover	<i>Trifolium</i> spp.	PH	Fabaceae
Cocklebur	<i>Xanthium strumarium canadense</i>	AH	Asteraceae
Cottonwood	<i>Populus fremontii</i>	T	Salicaceae
Coyote thistle	<i>Eryngium</i> spp.	PH	Apiaceae
Creosote bush	<i>Larrea tridentata</i>	S	Zygophyllaceae
Delta button-celery	<i>Eryngium racemosum</i>	A/PH	Apiaceae
Delta tule-pea	<i>Lathyrus jepsonii jepsonii</i>	PH	Fabaceae
Dove weed	<i>Eremocarpos setigerus</i>	AH	Euphorbiaceae
Downingia	<i>Downingia</i> spp.	AH	Campanulaceae
Duckweed	<i>Lemna</i> spp.	AH	Lemnaceae
Elderberry	<i>Sambucus</i> spp.	S	Capifoliaceae

**Table I-2  
Common and Scientific Names of Plant Species  
Cited in the San Luis Unit Environmental Impact Statement**

Common Name	Scientific Name	Growth Habit	Family
Ferris' bird's-beak	<i>Cordylanthus palmatus</i>	AH	Scrophulariaceae
Forked fiddleneck	<i>Amsinckia vernicosa</i> var. <i>furcata</i>	AH	Boraginaceae
Fourwing saltbush	<i>Atriplex canescens canescens</i>	S	Chenopodiaceae
Foxtail fescue	<i>Festuca megalura</i>	PG	Poaceae
Fremont cottonwood	<i>Populus fremontii</i>	T	Salicaceae
Goldfield	<i>Lasthenia</i> spp.	AH	Asteraceae
Heartscale	<i>Atriplex cordulata</i>	S	Chenopodiaceae
Hedge-hyssop	<i>Gratiola ebracteata</i>	AH	Scrophulariaceae
Hispid bird's-beak	<i>Cordylanthus mollis</i> ssp. <i>Hispidus</i>	AH	Scrophulariaceae
Hoary nettle	<i>Urtica dioica</i>	PH	Urticaceae
Hoover's eriastrum	<i>Eriastrum hooveri</i>	AH	Polemoniaceae
Horsetail	<i>Equisetum</i> spp.	PH	Equisetaceae
Horseweed	<i>Conyza</i> spp.	AH	Asteraceae
Interior live oak	<i>Quercus wislizenii wislizenii</i>	T	Fagaceae
Iodine bush	<i>Allenrolfea occidentalis</i>	S	Chenopodiaceae
Kochia	<i>Kochia</i> spp.	S	Chenopodiaceae
Lesser saltscale	<i>Atriplex minuscula</i>	S	Chenopodiaceae
Long-beaked filaree	<i>Erodium botrys</i>	AH	Geraniaceae
Lost Hills saltbush	<i>Atriplex vallicola</i>	S	Chenopodiaceae
Low barley	<i>Hordeum depressum</i>	AG	Poaceae
Mariposa lily	<i>Calochortus</i> spp.	PH	Liliaceae
Meadowfoam	<i>Limnanthes douglasii</i>	AH	Limnanthaceae
Medusa head	<i>Taeniatherum caput-medusae</i>	PG	Poaceae
Mistletoe	<i>Phoradendron</i> spp.	PH	Viscaceae
Monkey flower	<i>Mimulus guttatus</i>	PH	Scrophulariaceae
Mugwort	<i>Artemisia douglasiana</i>	PH	Asteraceae
Mule fat	<i>Baccharis salicifolia</i>	S	Asteraceae
Munz's tidy-tips	<i>Layia munzii</i>	AH	Asteraceae
Mustard	<i>Brassica/Hirshfeldia/Sisymbrium</i> spp.	A/PH	Brassicaceae
Obvate-leaved thornmint	<i>Acanthomintha obovata</i> ssp. <i>obvata</i>	AH	Lamiaceae
Oregon ash	<i>Fraxinus latifolia</i>	T	Oleaceae
Owl's clover	<i>Castilleja</i> spp.	AH	Scrophulariaceae
Pale-yellow layia	<i>Layia heterotrichia</i>	AH	Asteraceae
Palmate-bracted bird's-beak	<i>Cordylanthus palmatus</i>	AH	Scrophulariaceae
Panoche peppergrass	<i>Lepidium jaredii</i> var. <i>album</i>	AH	Brassicaceae
Piute Mountains navarretia	<i>Navarretia setiloba</i>	AH	Polemoniaceae
Pogogyne	<i>Pogogyne</i> spp.	AH	Lamiaceae
Poison hemlock	<i>Conium maculatum</i>	PH	Apiaceae
Poison oak	<i>Toxicodendron diversilobum</i>	S/V	Anacardiaceae
Pondweed	<i>Potamogeton</i> spp.	PH	Potamogetonaceae
Popcorn flowers	<i>Plagiobothrys torreyi</i>	AH	Boraginaceae

**Table I-2  
Common and Scientific Names of Plant Species  
Cited in the San Luis Unit Environmental Impact Statement**

<b>Common Name</b>	<b>Scientific Name</b>	<b>Growth Habit</b>	<b>Family</b>
Purple needlegrass	<i>Nassella pulchra</i>	PG	Poaceae
Recurved larkspur	<i>Delphinium recurvatum</i>	PH	Ranunculaceae
Red brome	<i>Bromus madritensis rubens</i>	AG	Poaceae
Red willow	<i>Salix laevigata</i>	T	Salicaceae
Redstem filaree	<i>Erodium cicutarium</i>	AH	Geraniaceae
Ripgut grass	<i>Bromus diandrus</i>	AG	Poaceae
Rush	<i>Juncus</i> spp.	PH	Juncaceae
Salt cedar	<i>Tamarisk</i> sp.		
Saltgrass	<i>Distichlis spicata</i>	PH	Poaceae
San Joaquin woolly-threads	<i>Monolopia congdonii</i> ( <i>Lembertia congdonii</i> )	AH	Asteraceae
Sandbar willow	<i>Salix sessilifolia</i>	S	Salicaceae
Sedge	<i>Carex</i> spp.	PH	Cyperaceae
Slender fescue	<i>Vulpia bromoides</i>	AG	Poaceae
Slough thistle	<i>Cirsium crassicaule</i>	A/BH	Asteraceae
Smartweed	<i>Polygonum</i> spp.	A/PH	Polygonaceae
Soft chess	<i>Bromus hordeaceus</i>	AG	Poaceae
Spikerush	<i>Eleocharis palustris</i>	PH	Juncaceae
Spiny-sepaled button celery	<i>Eryngium spinosepalum</i>	PH	Apiaceae
Tree anemone	<i>Carpenteria californica</i>	S	Phyladelphaceae
Tulare pseudobahia	<i>Pseudobahia peirsonii</i>	AH	Asteraceae
Tule	<i>Scirpus</i> spp.	PH	Cyperaceae
Umbrella-sedge	<i>Cyperus eragrostis</i>	PH	Cyperaceae
Valley oak	<i>Quercus lobata</i>	T	Fagaceae
Valley sagittaria	<i>Sagittaria sanfordii</i>	PH	Alismataceae
Valley saltbush	<i>Atriplex polycarpa</i>	S	Chenopodiaceae
Verbena	<i>Verbena</i> spp.	A/PH	Verbenaceae
Water ily	<i>Nymphaea</i> spp.	PH	Nymphaeaceae
Waterweed	<i>Elodea</i> spp.	PH	Hydrocharitaceae
Water milfoil	<i>Myriophyllum</i> spp.	PH	Haloragidaceae
Western sycamore	<i>Platanus racemosa</i>	T	Platanaceae
White alder	<i>Alnus rhombifolia</i>	T	Betulaceae
Wild barley	<i>Hordeum</i> spp.	AG	Poaceae
Wild oats	<i>Avena fatua</i>	AG	Poaceae
Woolly marble	<i>Psilocarphus</i> spp.	AH	Astreraceae
Yerba mansa	<i>Anemopsis californica</i>	PH	Saururaceae

Growth habitat definitions:

AF = annual fern	BH = biennial herb	PV = perennial vine
AG = annual grass	PF = perennial fern	S = shrub
AH = annual herb	PG = perennial grass	T = tree
AV = annual vine	PH = perennial herb	

**Table I-3**  
**Common and Scientific Names of Wildlife Species**  
**Cited in the San Luis Unit Environmental Impact Statement**

Common Name	Scientific Name
<b>Birds</b>	
Acorn woodpecker	<i>Melanerpes formicivorus</i>
Aleutian Canada goose	<i>Branta canadensis leucopareia</i>
American bittern	<i>Botaurus lentiginosus</i>
American crow	<i>Corvus brachyrhynchos</i>
American kestrel	<i>Falco sparverius</i>
American peregrine falcon	<i>Falco peregrinus anatu</i>
American pipit	<i>Anthus rubescens</i>
American robin	<i>Turdus migratorius</i>
Bald eagle	<i>Haliaeetus leucocephalus</i>
Barn owl	<i>Tyto alba</i>
Bell's sage sparrow	<i>Amhispiza belli belli</i>
Belted kingfisher	<i>Ceryle alcyon</i>
Black-bellied plover	<i>Pluvialis squatarola</i>
Black-headed grosbeak	<i>Pheucticus melanocephalus</i>
Black-necked stilt	<i>Himantopus mexicanus</i>
Black phoebe	<i>Sayornis nigricans</i>
Black-shouldered kite	<i>Elanus caeruleus</i>
Blue-gray gnatcatcher	<i>Polioptila carerulea</i>
Brewer's blackbird	<i>Euphagus cyanocephalus</i>
Burrowing owl	<i>Athene cunicularia</i>
California condor	<i>Gymnogyps californianus</i>
California gull	<i>Larus californicus</i>
California quail	<i>Callipepla californica</i>
Canada goose	<i>Branta canadensis</i>
Cinnamon teal	<i>Anas cyanoptera</i>
Common goldeneye	<i>Bucephala clangula</i>
Common merganser	<i>Mergus merganser</i>
Common raven	<i>Corvus corax</i>
Common yellowthroat	<i>Geothlypis trichas</i>
Cooper's hawk	<i>Accipiter cooperii</i>
Coot	<i>Fulica americana</i>
Double-crested cormorant	<i>Phalacrocorax auritus</i>
European starling	<i>Sturnus vulgaris</i>
Ferruginous hawk	<i>Buteo regalis</i>
Golden eagle	<i>Aquila chrysaetos</i>
Great blue heron	<i>Ardea herodias</i>
Great egret	<i>Casmerodius albus</i>

**Table I-3  
Common and Scientific Names of Wildlife Species  
Cited in the San Luis Unit Environmental Impact Statement**

<b>Common Name</b>	<b>Scientific Name</b>
Greater sandhill crane	<i>Grus canadensis tabida</i>
Greater white-fronted goose	<i>Anser albafrons</i>
Green-backed heron	<i>Butorides striatus</i>
Gull	<i>Larus spp.</i>
Horned lark	<i>Eremophila alpestris</i>
House finch	<i>Carpodacus mexicanus</i>
Killdeer	<i>Charadrius vociferus</i>
Kingfisher	<i>Ceryle alcyon</i>
Lazuli bunting	<i>Passerina amoena</i>
Least Bell's vireo	<i>Vireo bellii pusillus</i>
Lesser goldfinch	<i>Carduelis psaltria</i>
Lewis' woodpecker	<i>Melanerpes lewis</i>
Little willow flycatcher	<i>Empidonax traillii brewsteri</i>
Loggerhead shrike	<i>Lanius ludovicianus</i>
Long-billed curlew	<i>Numenius americanus</i>
Long-eared owl	<i>Asio otus</i>
MacGillivray's warbler	<i>Oporornis tolmiei</i>
Mallard	<i>Anas platyrhynchos</i>
Marsh wren	<i>Cistothorus palustris</i>
Merlin	<i>Falco columbarius</i>
Mountain plover	<i>Charadrius montanus</i>
Mourning dove	<i>Zenaida macroura</i>
Northern flicker	<i>Colaptes auratus</i>
Northern harrier	<i>Circus cyaneus</i>
Northern mockingbird	<i>Mimus polyglottos</i>
Northern rough-winged swallow	<i>Stelgidopteryx serripennis</i>
Osprey	<i>Pandion haliaetus</i>
Pintail	<i>Anas acuta</i>
Plain titmouse	<i>Parus inornatus</i>
Prairie falcon	<i>Falco mexicanus</i>
Red-tailed hawk	<i>Buteo jamaicensis</i>
Red-winged blackbird	<i>Agelaius phoeniceus</i>
Ring-necked pheasant	<i>Phasianus colchicus</i>
Roadrunner	<i>Geococcyx californicus</i>
Ross' goose	<i>Chen rossii</i>
Rufous-sided towhee	<i>Pipilo erythrophthalmus</i>
Sage sparrow	<i>Amphispiza belli</i>
San Joaquin LeConte's thrasher	<i>Toxostoma lecontei macmillanoru</i>
Sandhill crane	<i>Grus canadensis</i>



**Table I-3  
Common and Scientific Names of Wildlife Species  
Cited in the San Luis Unit Environmental Impact Statement**

Common Name	Scientific Name
Savannah sparrow	<i>Passerculus sandwichensis</i>
Say's phoebe	<i>Sayornis saya</i>
Scrub jay	<i>Aphelocoma coerulescens</i>
Sharp-shinned hawk	<i>Accipiter striatus</i>
Short-eared owl	<i>Asio flammeus</i>
Snow goose	<i>Chen caerulescens</i>
Snowy egret	<i>Egretta thula</i>
Song sparrow	<i>Melospiza melodia</i>
Spotted sandpiper	<i>Actitis macularia</i>
Swainson's hawk	<i>Buteo swainsoni</i>
Tricolored blackbird	<i>Agelaius tricolor</i>
Tree swallow	<i>Tachycineta bicolor</i>
Tundra swan	<i>Cygnus columbianus</i>
Virginia rail	<i>Rallus limicola</i>
Violet-green swallow	<i>Tachycineta thalassina</i>
Western burrowing owl	<i>Athene cunicularia</i>
Western flycatcher	<i>Empidonax difficilis</i>
Western kingbird	<i>Tyrannus verticalis</i>
Western meadowlark	<i>Sturnella neglecta</i>
Western snowy plover	<i>Charadrius alexandrinus nivosus</i>
Western yellow-billed cuckoo	<i>Coccyzus americanus</i>
White-breasted nuthatch	<i>Sitta carolinensis</i>
White-crowned sparrow	<i>Zonotrichia leucophrys</i>
White-faced ibis	<i>Plegadis chihi</i>
Wilson's warbler	<i>Wilsonia pusilla</i>
Wood duck	<i>Aix sponsa</i>
Yellow warbler	<i>Dendroica petechia</i>
Yellow-breasted chat	<i>Icteria virens</i>
Yellow-billed magpie	<i>Pica nuttalli</i>
<b>Amphibians</b>	
Bullfrog	<i>Rana catesbeiana</i>
California red-legged frog	<i>Rana aurora draytonii</i>
California tiger salamander	<i>Ambystoma californiense</i>
Foothill yellow-legged frog	<i>Rana boylei</i>
Pacific tree frog	<i>Hyla regilla</i>
Western spadefoot toad	<i>Scaphiopus hammondi</i>
Western toad	<i>Bufo boreas</i>

**Table I-3  
Common and Scientific Names of Wildlife Species  
Cited in the San Luis Unit Environmental Impact Statement**

<b>Common Name</b>	<b>Scientific Name</b>
<b>Reptiles</b>	
Aquatic garter snake	<i>Thamnophis couchi</i>
Blunt-nosed leopard lizard	<i>Gambelia silus</i>
California horned lizard	<i>Phrynosoma coronatum frontale</i>
Common garter snake	<i>Thamnophis sirtalis</i>
Common kingsnake	<i>Lampropeltis getulus</i>
Giant garter snake	<i>Thamnophis gigas</i>
Gilbert's skink	<i>Eumeces gilberti</i>
Glossy snake	<i>Arizona elegans</i>
Gopher snake	<i>Pituophis melanoleucus</i>
Northwestern pond turtle	<i>Clemmys marmorata marmorata</i>
San Joaquin coachwhip (=whipsnake)	<i>Masticophis flagellum ruddocki</i>
Side-blotched lizard	<i>Uta stansburiana</i>
Silvery legless lizard	<i>Anniella pulchra pulchra</i>
Southwestern pond turtle	<i>Clemmys marmorata pallida</i>
Western fence lizard	<i>Sceloporus occidentalis</i>
Western rattlesnake	<i>Crotalus viridis</i>
Western whiptail	<i>Cnemidophorus tigris</i>
<b>Mammals</b>	
American badger	<i>Taxidea taxus</i>
Beaver	<i>Castor canadensis</i>
Black-tailed hare	<i>Lepus californicus</i>
Botta's pocket gopher	<i>Thomomys bottae</i>
Brazilian free-tailed bat	<i>Tadarida brasiliensis</i>
Broad-footed mole	<i>Scapanus latimanus</i>
California ground squirrel	<i>Spermophilus beecheyi</i>
California myotis	<i>Myotis californicus</i>
California vole	<i>Microtus californicus</i>
Coyote	<i>Canis latrans</i>
Deer mouse	<i>Peromyscus maniculatus</i>
Desert cottontail	<i>Sylvilagus auduboni</i>
Fresno kangaroo rat	<i>Dipodomys nitratooides exilis</i>
Fringed myotis bat	<i>Myotis thysanodes</i>
Giant kangaroo rat	<i>Dipodomys ingens</i>
Gray fox	<i>Urocyon cinereoargenteus</i>
Gray squirrel	<i>Sciurus griseus</i>
Greater western mastiff-bat	<i>Eumops perotis californicus</i>
Heermann's kangaroo rat	<i>Dipodomys heermanni</i>
Hoary bat	<i>Lasiurus cinereus</i>

**Table I-3  
Common and Scientific Names of Wildlife Species  
Cited in the San Luis Unit Environmental Impact Statement**

Common Name	Scientific Name
Long-eared myotis bat	<i>Myotis evotis</i>
Long-legged myotis bat	<i>Myotis volans</i>
Long-tailed weasel	<i>Mustela frenata</i>
Mule deer	<i>Odocoileus hemionus</i>
Muskrat	<i>Ondatra zibethica</i>
Ornate shrew	<i>Sorex ornatus</i>
Pacific western big-eared bat	<i>Corynorhinus townsendii townsendii</i>
Pallid bat	<i>Antrozous pallidus</i>
Pocket gopher	<i>Thomomys</i> spp.
Pronghorn	<i>Antilocapra Americana</i>
Raccoon	<i>Procyon lotor</i>
Ringtail	<i>Bassariscus astutus</i>
Riparian (San Joaquin Valley) woodrat	<i>Neotoma fuscipes riparia</i>
River otter	<i>Lutra canadensis</i>
San Joaquin antelope squirrel	<i>Ammospermophilus nelsoni</i>
San Joaquin kit fox	<i>Vulpes macrotis mutica</i>
San Joaquin pocket mouse	<i>Perognathus inornatus inornatus</i>
Short-nosed kangaroo rat	<i>Dipodomys nitratoides brevinasus</i>
Sierra Nevada red fox	<i>Vulpes vulpes necator</i>
Southern grasshopper mouse	<i>Onychomys torridus ramona</i>
Small-footed myotis bat	<i>Myotis ciliolabru</i>
Spotted bat	<i>Euderma maculatum</i>
Striped skunk	<i>Mephitis mephitis</i>
Tipton kangaroo rat	<i>Dipodomys nitratoides nitratoides</i>
Tulare grasshopper mouse	<i>Onychomys torridus tularensis</i>
Tule elk	<i>Cervus canadensis</i>
Virginia opossum	<i>Didelphis virginiana</i>
Western gray squirrel	<i>Sciurus griseus</i>
Western harvest mouse	<i>Reithrodontomys megalotis</i>
Western pipistrelle	<i>Pipistrellus hesperus</i>
Wild pig	<i>Sus scrofa</i>
Yuma myotis bat	<i>Myotis yumanensis</i>

**SAN LUIS UNIT**

---

**DRAFT ENVIRONMENTAL IMPACT STATEMENT  
LONG-TERM CONTRACT RENEWAL**

**Appendix F  
Distribution List**

---

September 2005



## **DISTRIBUTION LIST**

U.S. EPA, Environmental Review Office  
Compliance and Ecosystem Division  
Attention: Laura Fujii  
75 Hawthorn Street  
San Francisco, California 94105-3901

California State Clearinghouse  
1400 Tenth Street  
Sacramento, California 95814

South Delta Water Agency  
Attention: John Herrick  
4255 Pacific Avenue, Suite 2  
Stockton, CA 95207

Natural Resources Defense Counsel  
Attention: Drew Caputo or Hal Candee  
111 Sutter St., 20th floor  
San Francisco, CA 94104

Golden Gate Audubon Society  
Attention: Arthur Feinstein  
2530 San Pablo Ave, Suite G  
Berkeley, CA 94702-2047

Trinity County Board of Supervisors  
Attention: Ralph Modine  
PO Box 1613  
101 Court St.  
Weaverville, CA 96093

Friends of the Trinity River  
Attention: Byron Leydecker  
PO Box 2327  
Mill Valley, CA 94942-2327

Department of the Interior  
Attention: Patricia Port, Director  
Office of Environmental Policy and  
Compliance  
1849 C Street, NW Room 2340 MIB  
Washington, DC 20240-0001

Trinity County Planning Department  
Attention: Josh Allen or Tom Stokely  
P.O. Box 2819  
Weaverville, California 96093

State Water Resources Control Board  
Division of Water Rights  
Attention: Diane Riddle  
P.O. Box 2000  
Sacramento CA, 95812

State Water Resources Control Board  
Division of Water Rights  
Attention: Gina Kapahi  
P.O. Box 2000  
Sacramento CA, 95812

Save The Bay  
Attention: Cynthia Koehler  
350 Frank H. Ogawa Plaza, Suite 900  
Oakland, CA 94612

The Bay Institute of San Francisco  
Attention: Grant Davis  
500 Palm Drive, Suite 200  
Novato, CA 94949

Pacific Coast Federation of Fishermen's  
Associations, Southwest Regional Office  
Attention: W.F. "Zeke" Grader  
PO Box 29196  
San Francisco, CA 94129-0196

U.S. Fish & Wildlife Service  
Sacramento Fish and Wildlife Office  
Field Supervisor, Attention: Jan Knight  
2800 Cottage Way, Room W-2605  
Sacramento, CA, 95825-1846

City of Avenal  
Attention: Melissa Whitten  
City Manager  
919 Skyline Blvd.  
Avenal, CA 93204

Taxpayers for Common Sense  
Attention: Aileen D. Roder,  
Program Director  
651 Pennsylvania Ave, SE  
Washington, DC 20003

City of Huron  
Attention: Robert E. Wilburn  
City Manager  
P.O. Box 339  
Huron, CA 93234

National Marine Fisheries Service  
Attention: Rodney McInnis  
650 Capitol Mall, Suite 8-300  
Sacramento, CA 95814-4708

City of Coalinga  
Attention: Richard N. Warne, City  
Manager  
155 West Durian Avenue  
Coalinga, CA 93210

National Marine Fisheries Service  
Attention: Michael Aceituno  
650 Capitol Mall, Suite 8-300  
Sacramento, CA 95814-4708

California Department of Fish and Game  
Attention: Steve Brueggeman  
Mendota Wildlife Area  
P.O. Box 37  
Mendota CA 93640

Gary W. Sawyers  
Law Offices of Gary W. Sawyers  
6715 North Palm Avenue, Suite 116  
Fresno, CA 93704

Westlands Water District  
Attention: Thaddeus Bettner  
Dept. General Manager Resources  
P.O. Box 6056  
Fresno, CA 93703

Diane V. Rathmann  
Linneman, et al., Law Office  
P. O. Box 156  
Dos Palos, CA 93620

U.S. Bureau of Reclamation  
Attention: Joe Thompson  
Environmental Specialist,  
South Central California Area Office  
1243 N Street  
Fresno, CA 93721-1813

Chase Hurley  
Panoche Water District  
52027 W. Althea  
Firebaugh, CA 93622

San Luis Water District  
Attention: David Coxey,  
General Manager  
P.O. Box 2135  
Los Banos, CA 93635

Merced County Library Main Branch  
2100 O Street  
Merced, California 95340

Fresno County Library  
2420 Mariposa St  
Fresno, CA 93721

Mendota Branch Library  
667 Quince Street  
Mendota, CA 93640

Kings County Library  
Avenal Branch Library  
501 East Kings  
Avenal, CA 93204

Kings County Library  
Hanford Branch - Main  
401 N. Douty Street  
Hanford, CA 93230

Kronick, Moscovitz, Tiederman and  
Girard  
Attention: Jon D. Rubin  
400 Capitol Mall, Suite 2700  
Sacramento, CA 95814-4417

The Honorable George Miller  
2205 Rayburn House Office Building  
Washington, DC 20515

The Honorable Dianne Feinstein  
United States Senate  
331 Hart Senate Office Building  
Washington, DC 20510

The Honorable Barbara Boxer  
United States Senate  
112 Hart Senate Office Building  
Washington, D.C. 20510-0505

Natural Resources Library,  
U.S. Department of the Interior,  
1849 C Street NW.,  
Main Interior Building,  
Washington, D.C. 20240-0001

Bureau of Reclamation, Denver Office  
Library, Building 67, Room 167  
Denver Federal Center  
6<sup>th</sup> and Kipling,  
Denver, CO 80225

Santa Clara Valley Water District  
Attn: Kelly Kennedy  
5750 Almaden Expressway  
San Jose, CA 95118-3686

Western Area Power Administration  
12155 W. Alameda Parkway  
P.O. Box 281213  
Lakewood, Colorado 80228-8213

Alan G. K. Solbert, Principal  
Water Resources and Floodplain  
Management  
Jones & Stokes Associates  
2600 V Street  
Sacramento, CA 95818

Morriset, Schlosser, Jozwiak & McGaw  
Attorneys at Law  
Attn: Thomas P. Schlosser  
801 2nd Ave Suite 1115  
Seattle, WA 98104

Ms. Theresa Stephens  
Ventura County Public Works Agency  
800 South Victoria Avenue  
Ventura, CA 93009

Wolf and Associates  
Attn: David Siedband  
724 N Street  
Davis, CA 95616

Department of the Interior  
Attn: Jennifer McLaughlin  
1111 Jackson Street  
Oakland, CA 94607

Ms. Nina Cordova  
Morisset Schlosser Jozwiak and McCaw  
801 Second Avenue, Suite 1115  
Seattle Washington 98104-1509



Denver Nelson  
5240 Blackberry  
Eureka, CA 95503

Wayne Thompson  
4295 E Copper Ave  
Clovis, CA 93619

Humboldt County Board of Supervisors  
Attn: Jill Geist  
825 5th Street  
Eureka, CA 95501

Jeff Ramsdell, MBA  
100 South Street, Suite 212  
Sausalito, CA 94965

Water Resources Center Archives  
University of California  
410 O'Brien Hall  
Berkeley, CA 94720-1718

U.S. Bureau of Reclamation  
Attention: Mike Kinsey  
1243 N Street  
Fresno, CA 93721

Joe Thompson  
6378 Pioneer Road  
Medford, OR 97501