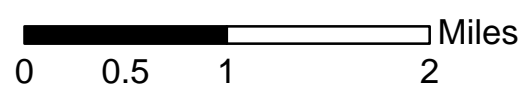
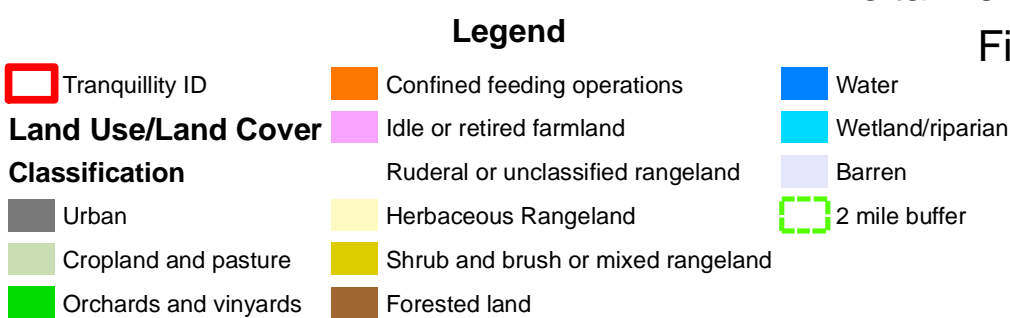
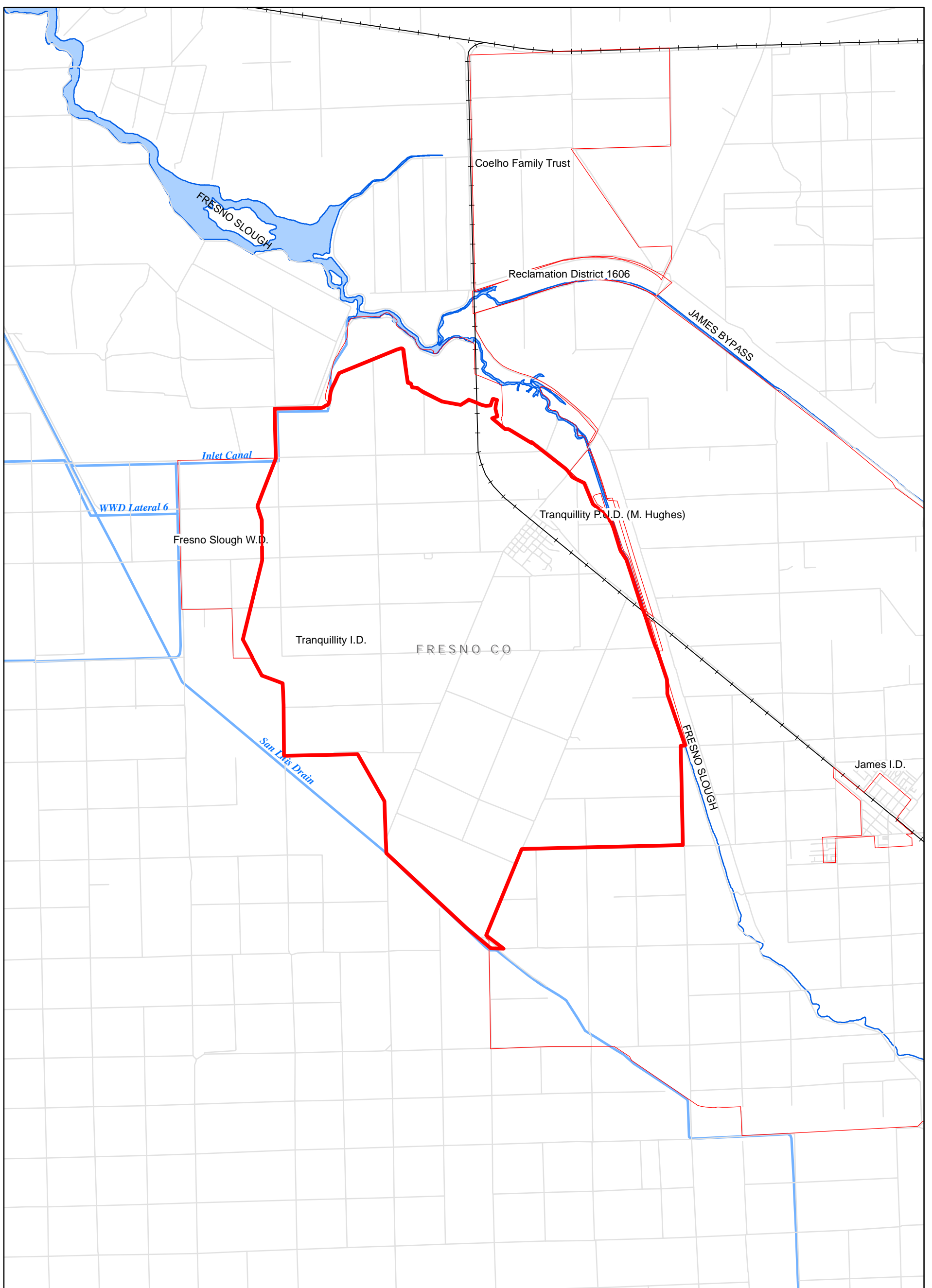


Delta Mendota Canal Unit Water Contractor Boundaries

Figure 3.1-34 Tranquillity Irrigation District
Current Land Use/Land Cover

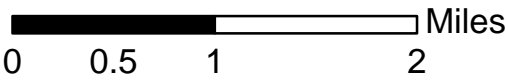


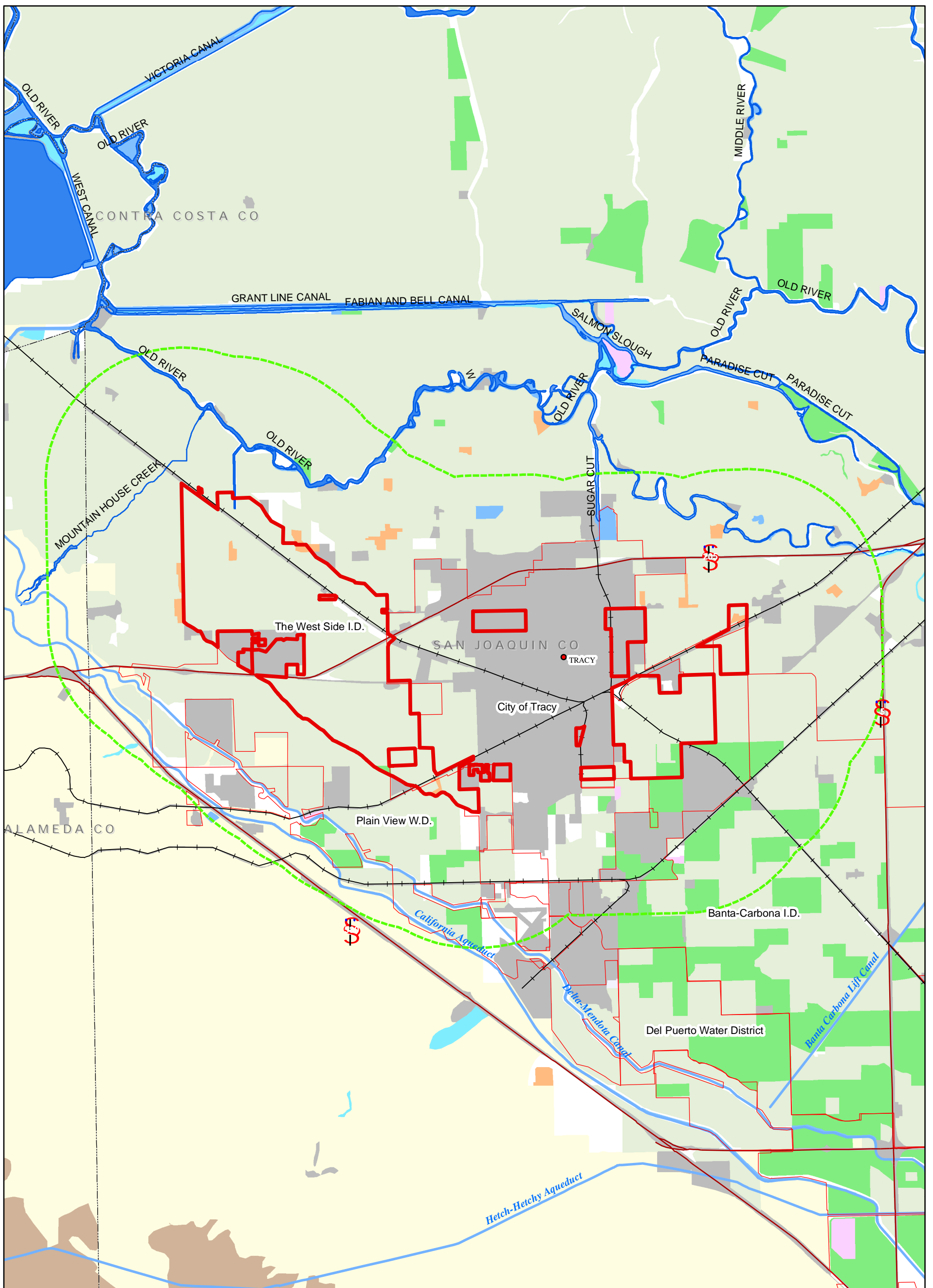


Delta Mendota Canal Unit Water Contractor Boundaries
 Figure 3.1-35 Tranquillity Irrigation District Boundary

Legend

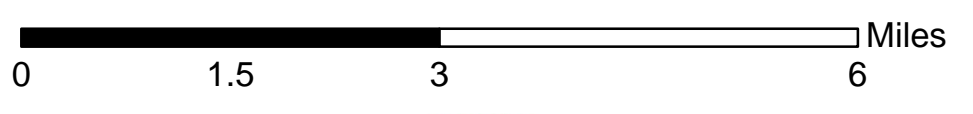
 District Boundary/Contractor's Service Area

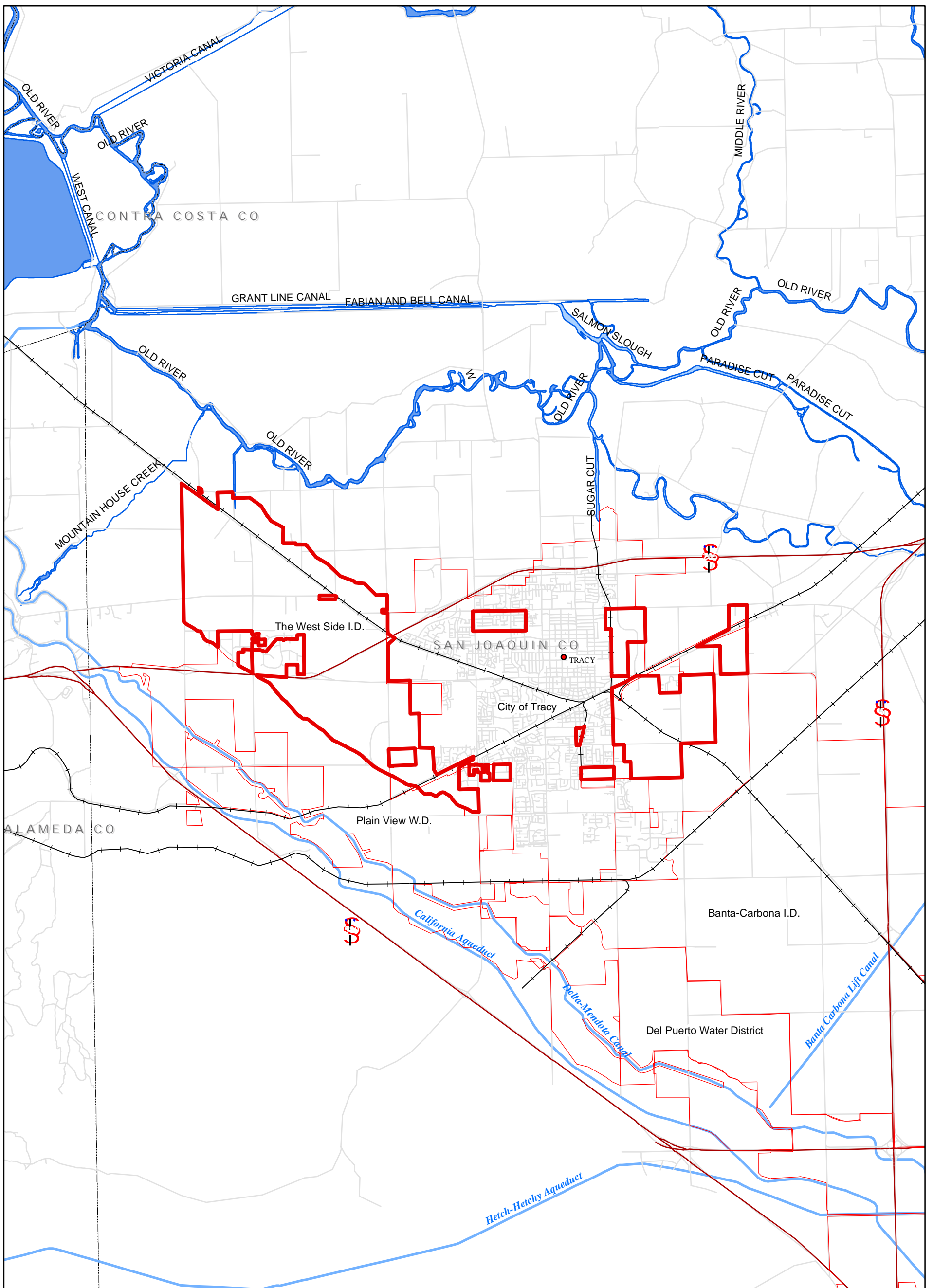





Delta Mendota Canal Unit Water Contractor Boundaries
 Figure 3.1-36 The West Side Irrigation District
 Current Land Use/Land Cover

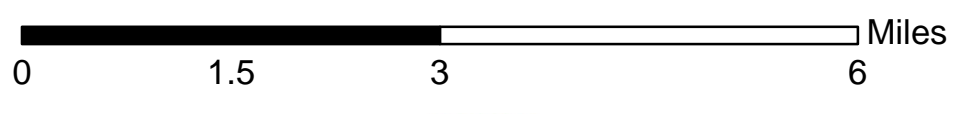
- | | |
|-----------------------------|------------------------------------|
| The West Side ID | Ruderal or unclassified rangeland |
| 2 mile buffer | Herbaceous Rangeland |
| Land Use/Land Cover | Shrub and brush or mixed rangeland |
| Classification | Forested land |
| Urban | Water |
| Cropland and pasture | Wetland/riparian |
| Orchards and vinyards | Barren |
| Confined feeding operations | |
| Idle or retired farmland | |

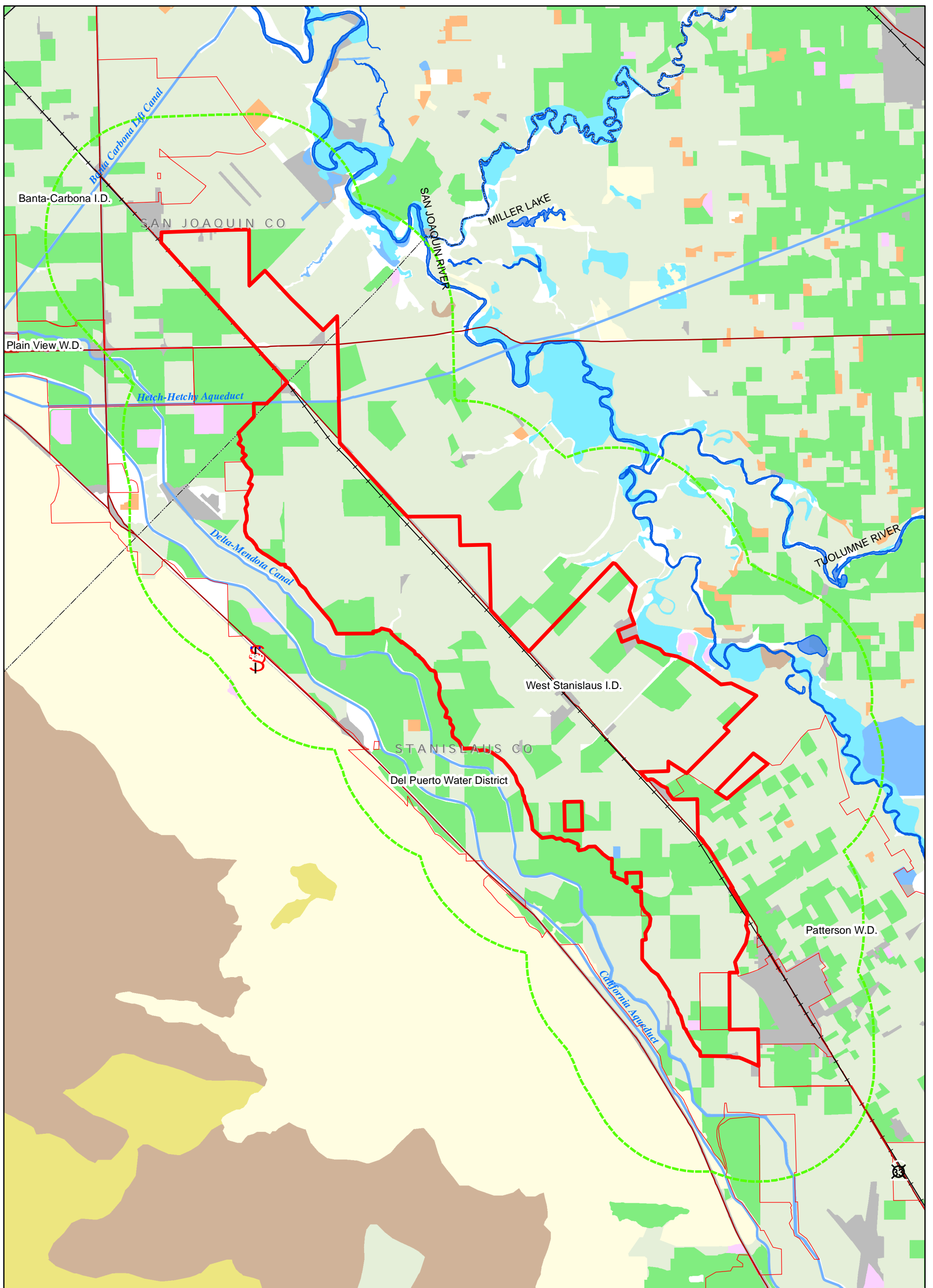




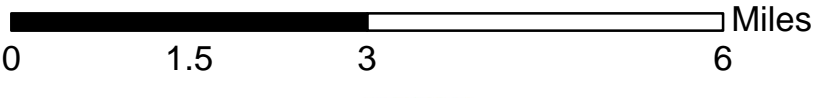
Delta Mendota Canal Unit Water Contractor Boundaries
 Figure 3.1-37 The West Side Irrigation District Boundary

Legend
 District Boundary/Contractor's Service Area



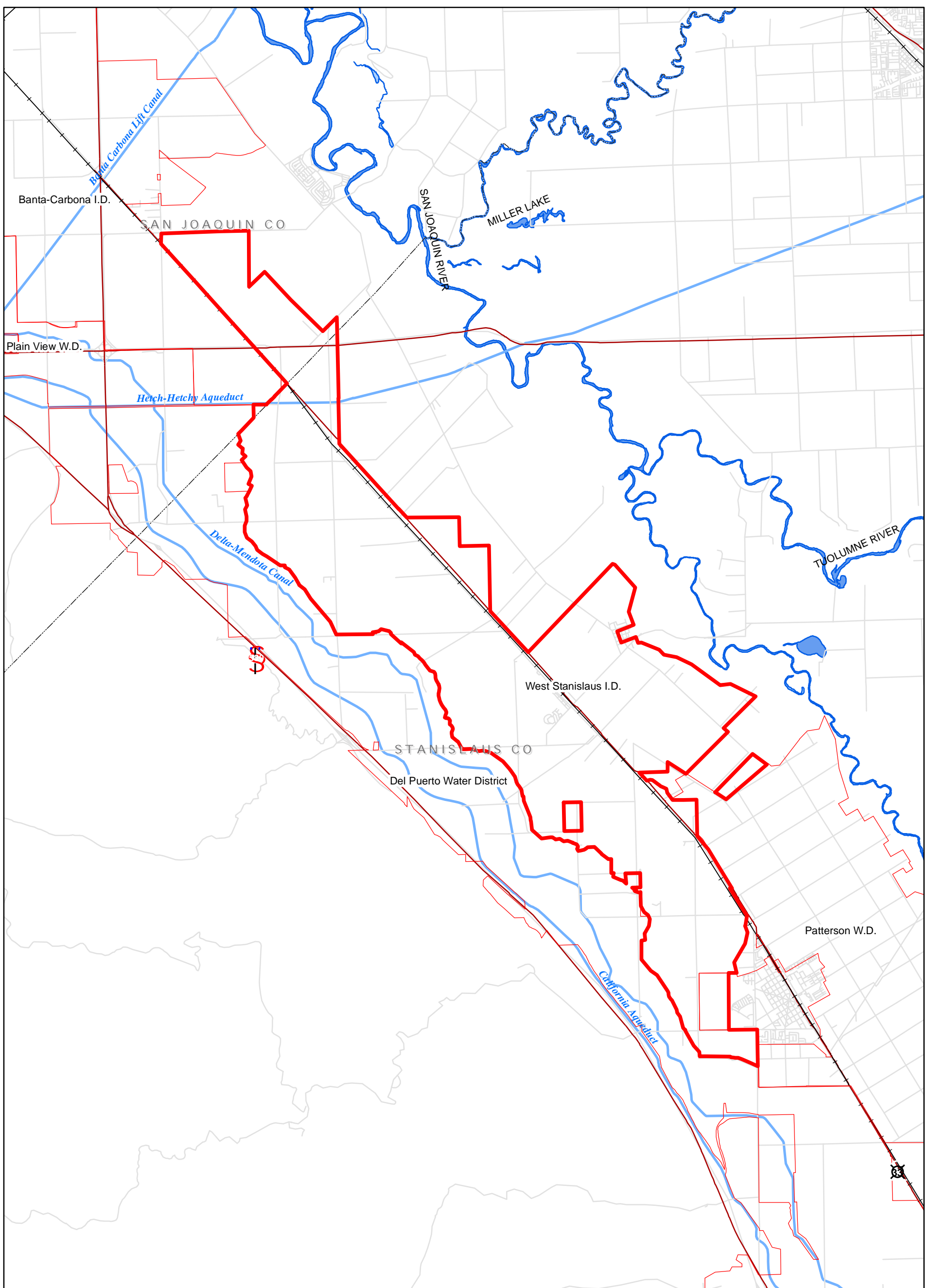


Delta Mendota Canal Unit Water Contractor Boundaries
 Figure 3.1-38 West Stanislaus Water District
 Current Land Use/Land Cover




Legend

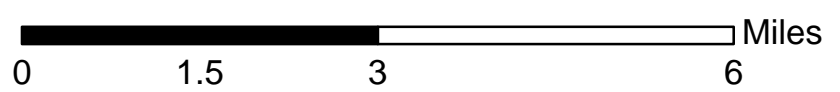
- | | |
|---|------------------------------------|
| West Stanislaus WD | Ruderal or unclassified rangeland |
| 2 mile buffer | Herbaceous Rangeland |
| Land Use/Land Cover Classification | Shrub and brush or mixed rangeland |
| Urban | Forested land |
| Cropland and pasture | Water |
| Orchards and vineyards | Wetland/riparian |
| Confined feeding operations | Barren |
| Idle or retired farmland | |

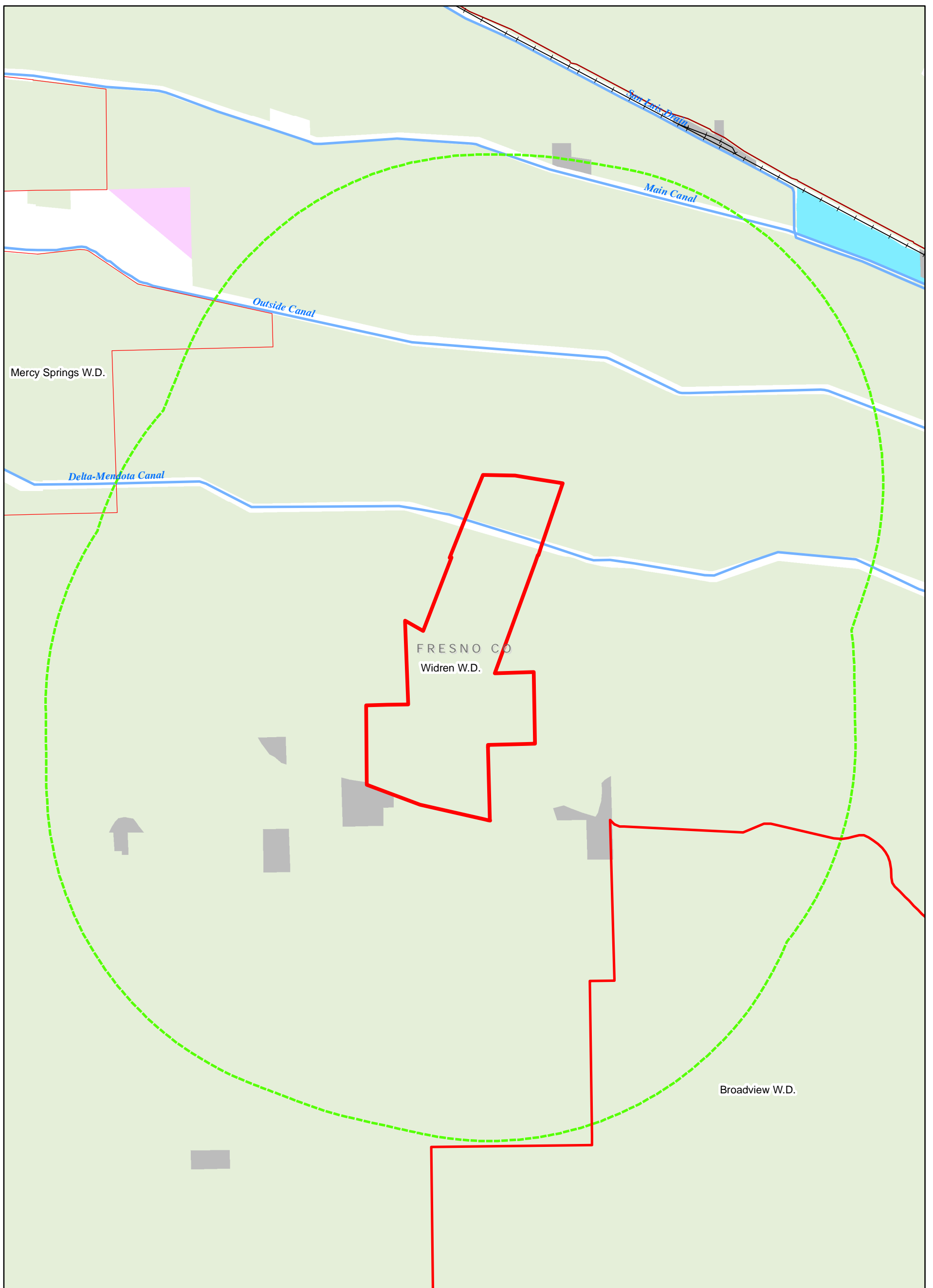


Delta Mendota Canal Unit Water Contractor Boundaries
 Figure 3.1-39 West Stanislaus Water District Boundary

Legend

 District Boundary/Contractor's Service Area



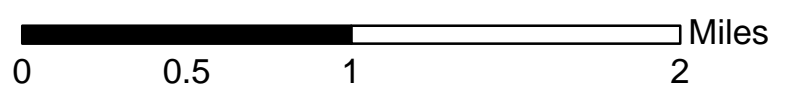


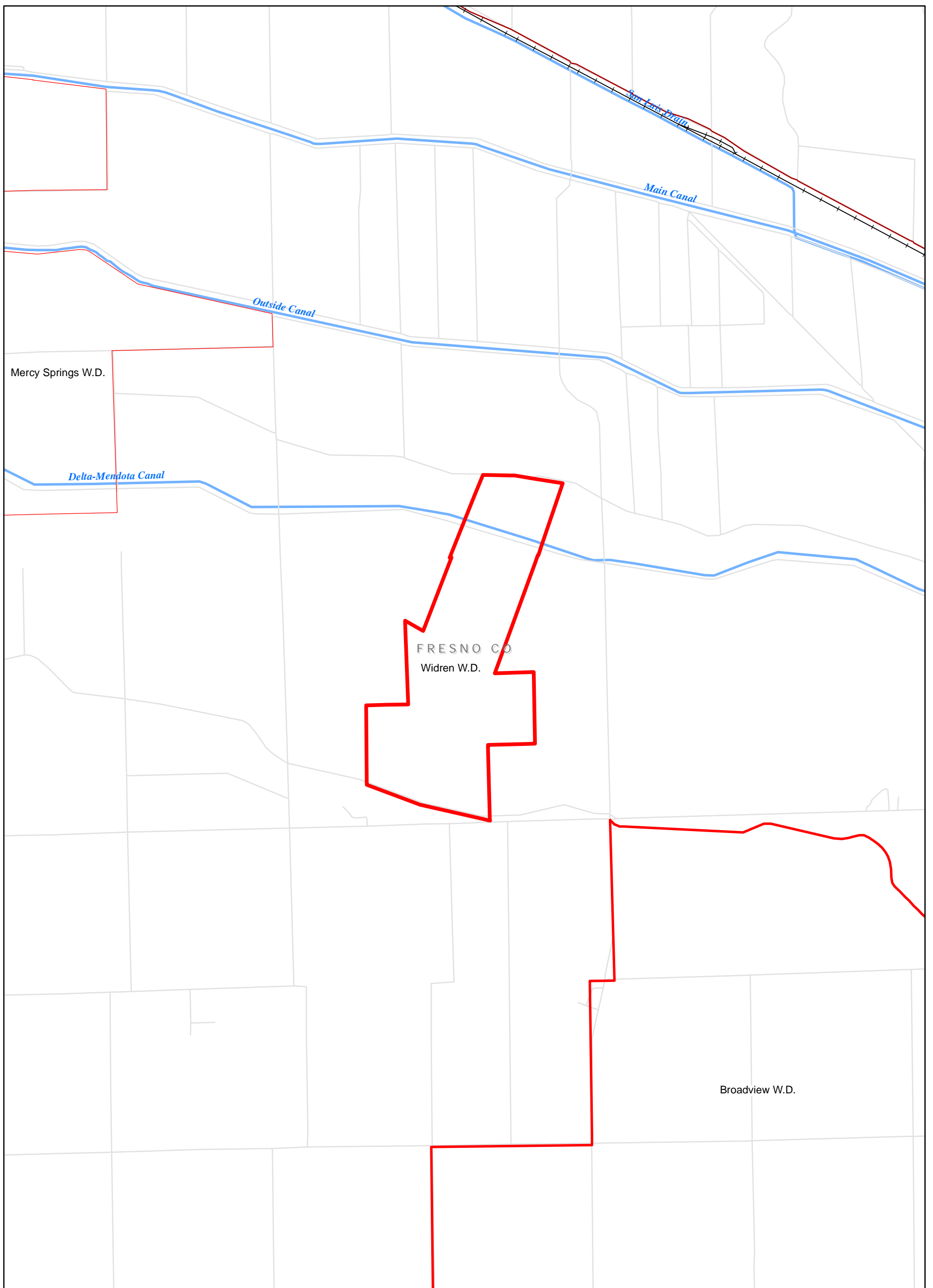
Legend

- Widren WD
- 2 mile buffer
- Land Use/Land Cover Classification**
- Urban
- Cropland and pasture
- Orchards and vineyards
- Confined feeding operations
- Idle or retired farmland
- Ruderal or unclassified rangeland
- Herbaceous Rangeland
- Shrub and brush or mixed rangeland
- Forested land
- Water
- Wetland/riparian
- Barren


Delta Mendota Canal Unit Water Contractor Boundaries

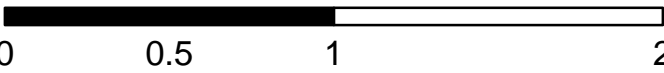
Figure 3.1-40 Widren Water District Current Land Use/Land Cover





Delta Mendota Canal Unit Water Contractor Boundaries
 Figure 3.1-41 Widren Water District Boundary

Legend
 District Boundary/Contractor's Service Area

 Miles
 0 0.5 1 2

