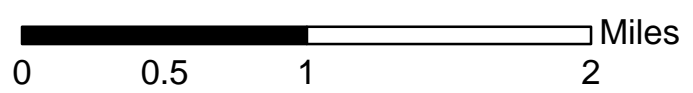


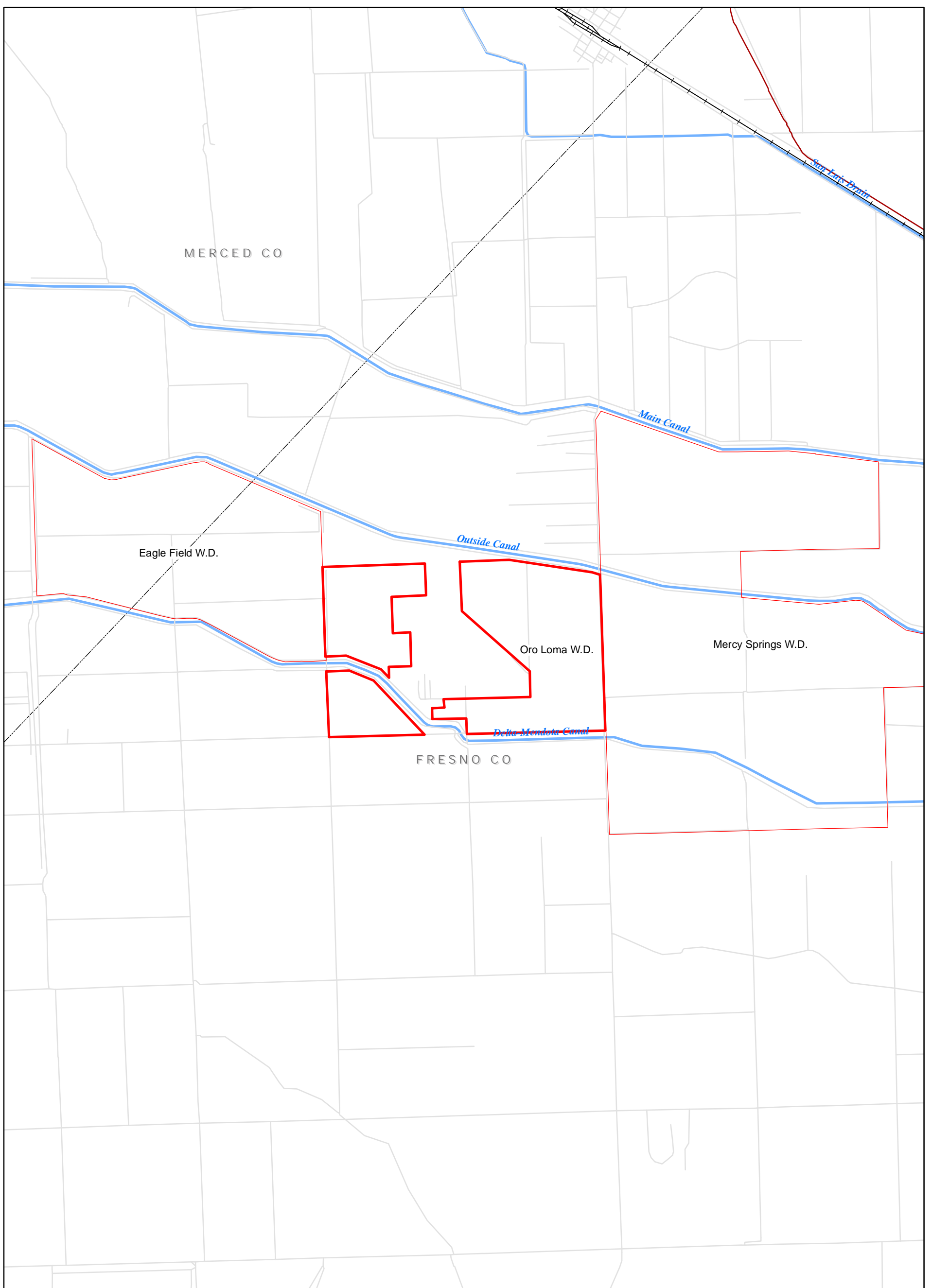
**Legend**

- Oro Loma WD
- 2 mile buffer
- Land Use/Land Cover Classification**
- Urban
- Cropland and pasture
- Orchards and vineyards
- Confined feeding operations
- Idle or retired farmland
- Ruderal or unclassified rangeland
- Herbaceous Rangeland
- Shrub and brush or mixed rangeland
- Forested land
- Water
- Wetland/riparian
- Barren

**Delta Mendota Canal Unit Water Contractor Boundaries**

**Figure 3.1-26 Oro Loma Water District Current Land Use/Land Cover**

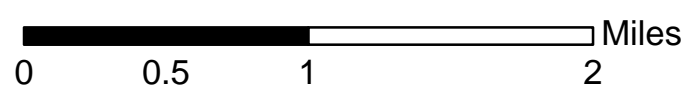




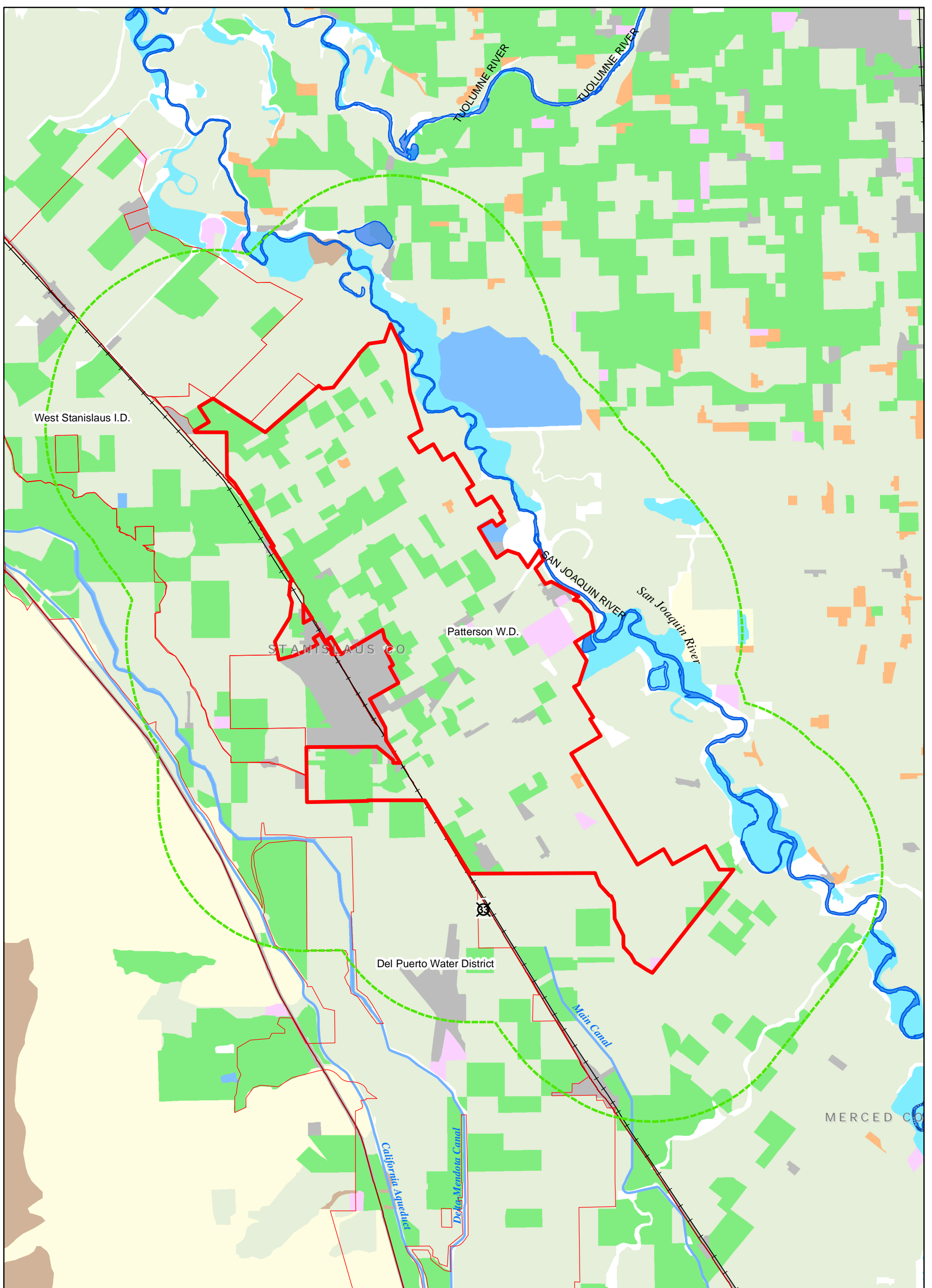
Delta Mendota Canal Unit Water Contractor Boundaries  
 Figure 3.1-27 Oro Loma Water District Boundary

**Legend**

 District Boundary/Contractor's Service Area

 Miles



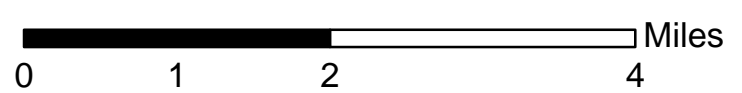


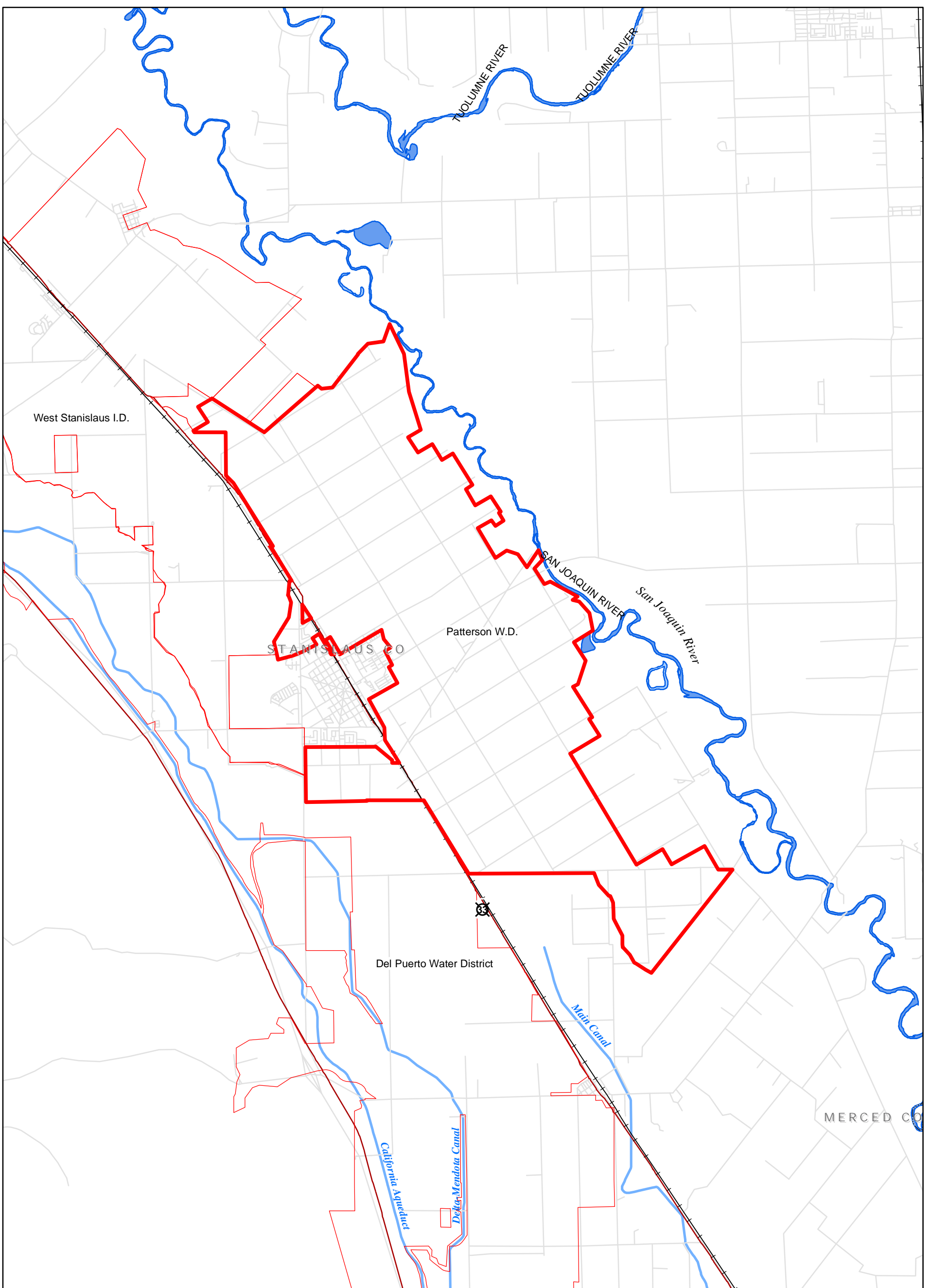
**Legend**

- Patterson WD
- 2 mile buffer
- Land Use/Land Cover Classification**
- Urban
- Cropland and pasture
- Orchards and vineyards
- Confined feeding operations
- Idle or retired farmland
- Ruderal or unclassified rangeland
- Herbaceous Rangeland
- Shrub and brush or mixed rangeland
- Forested land
- Water
- Wetland/riparian
- Barren

**Delta Mendota Canal Unit Water Contractor Boundaries**

**Figure 3.1-28 Patterson Water District Current Land Use/Land Cover**

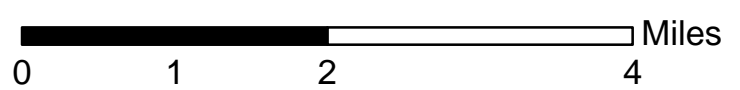


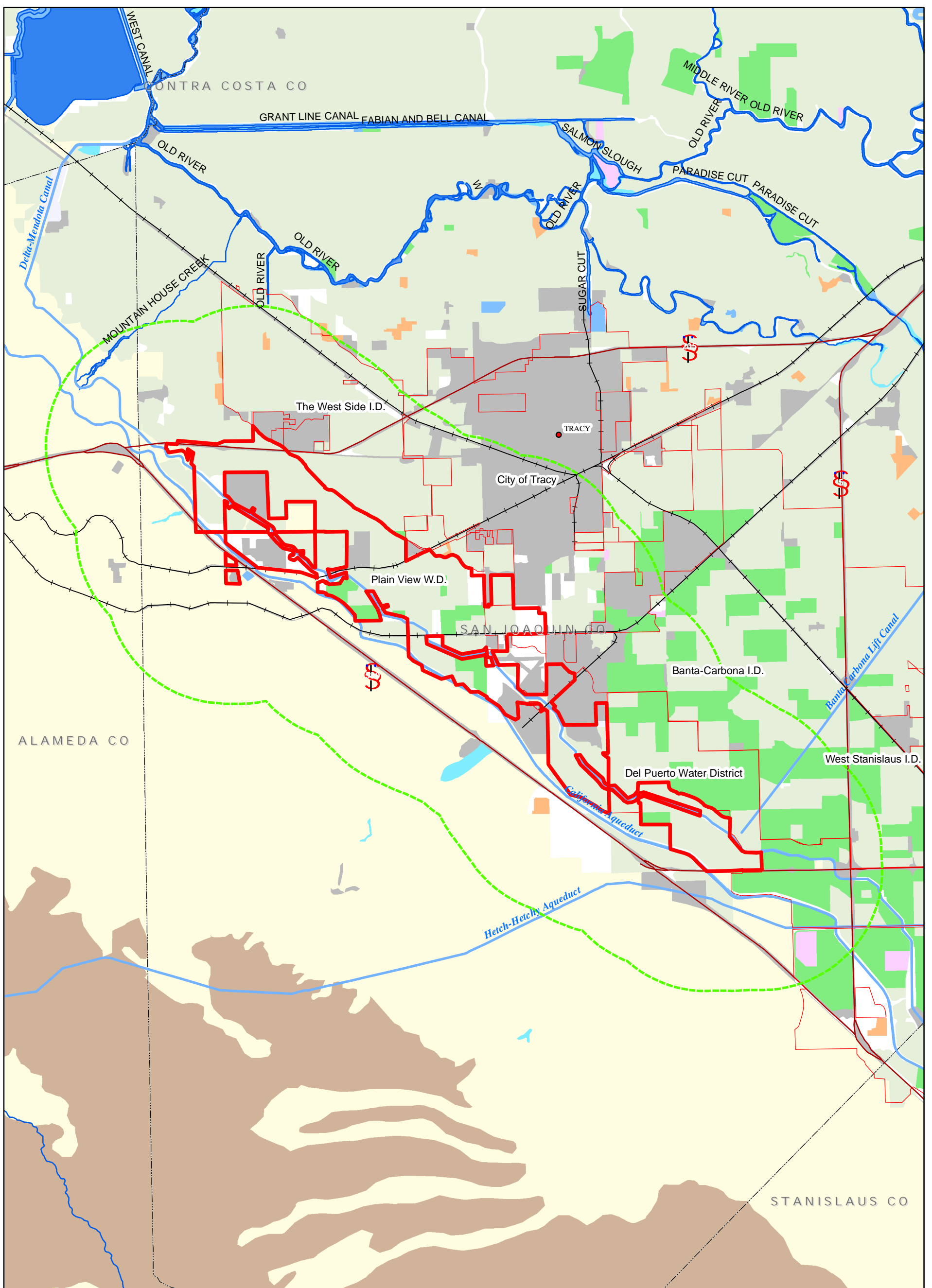


Delta Mendota Canal Unit Water Contractor Boundaries  
 Figure 3.1-29 Patterson Water District Boundary

**Legend**

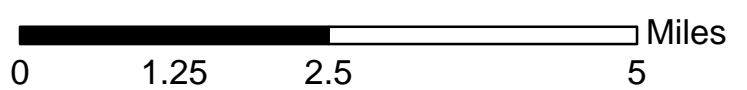
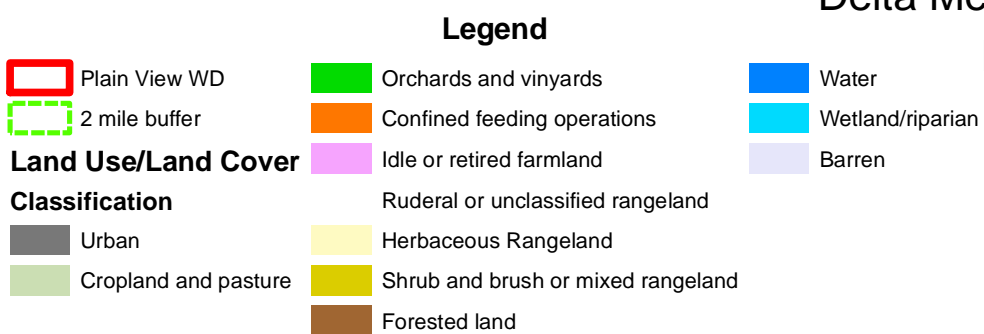
 District Boundary/Contractor's Service Area

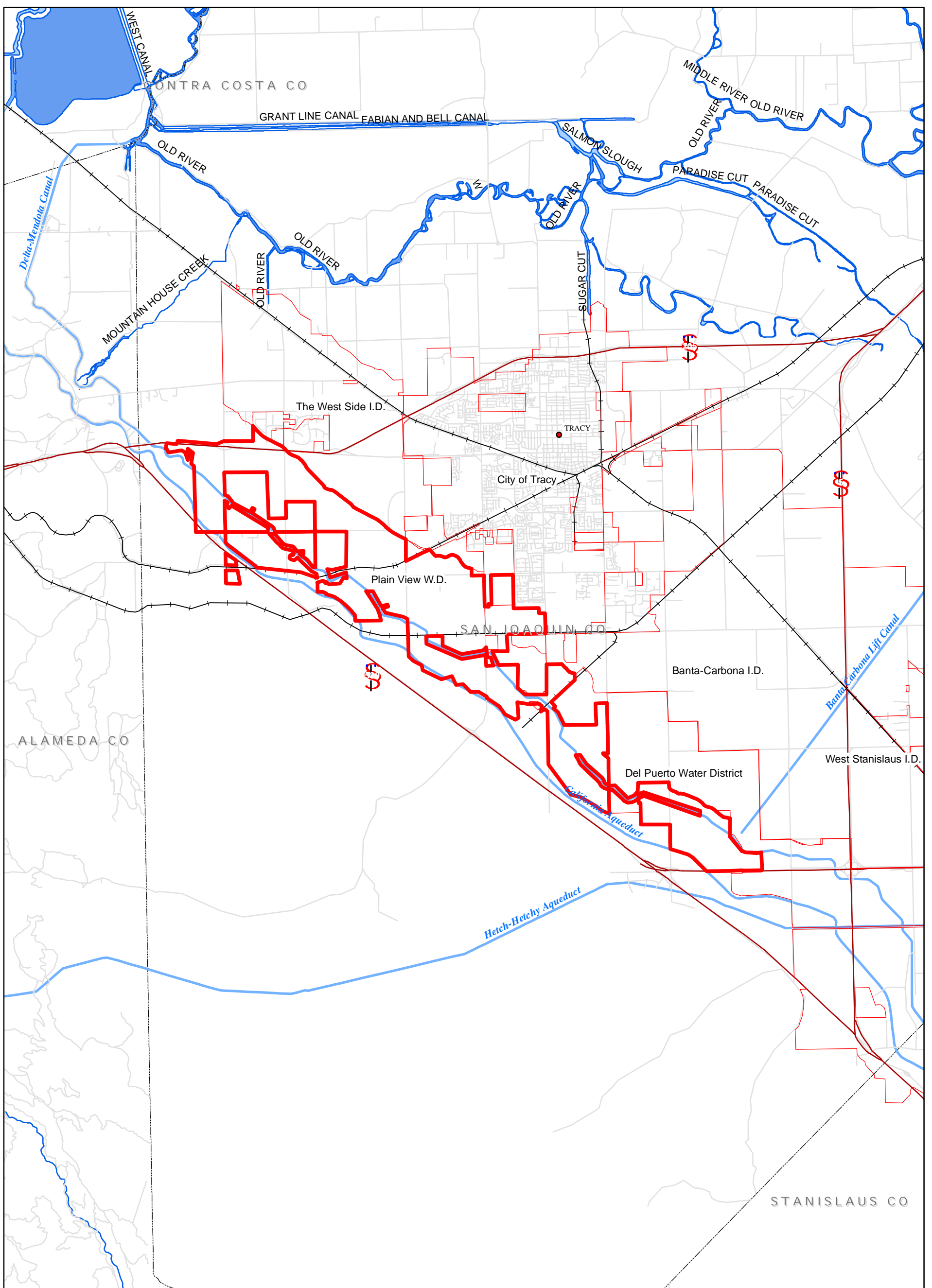




Delta Mendota Canal Unit Water Contractor Boundaries

Figure 3.1-30 Plain View Water District  
Current Land Use/Land Cover

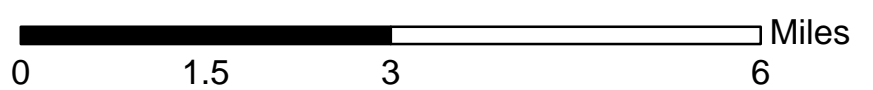


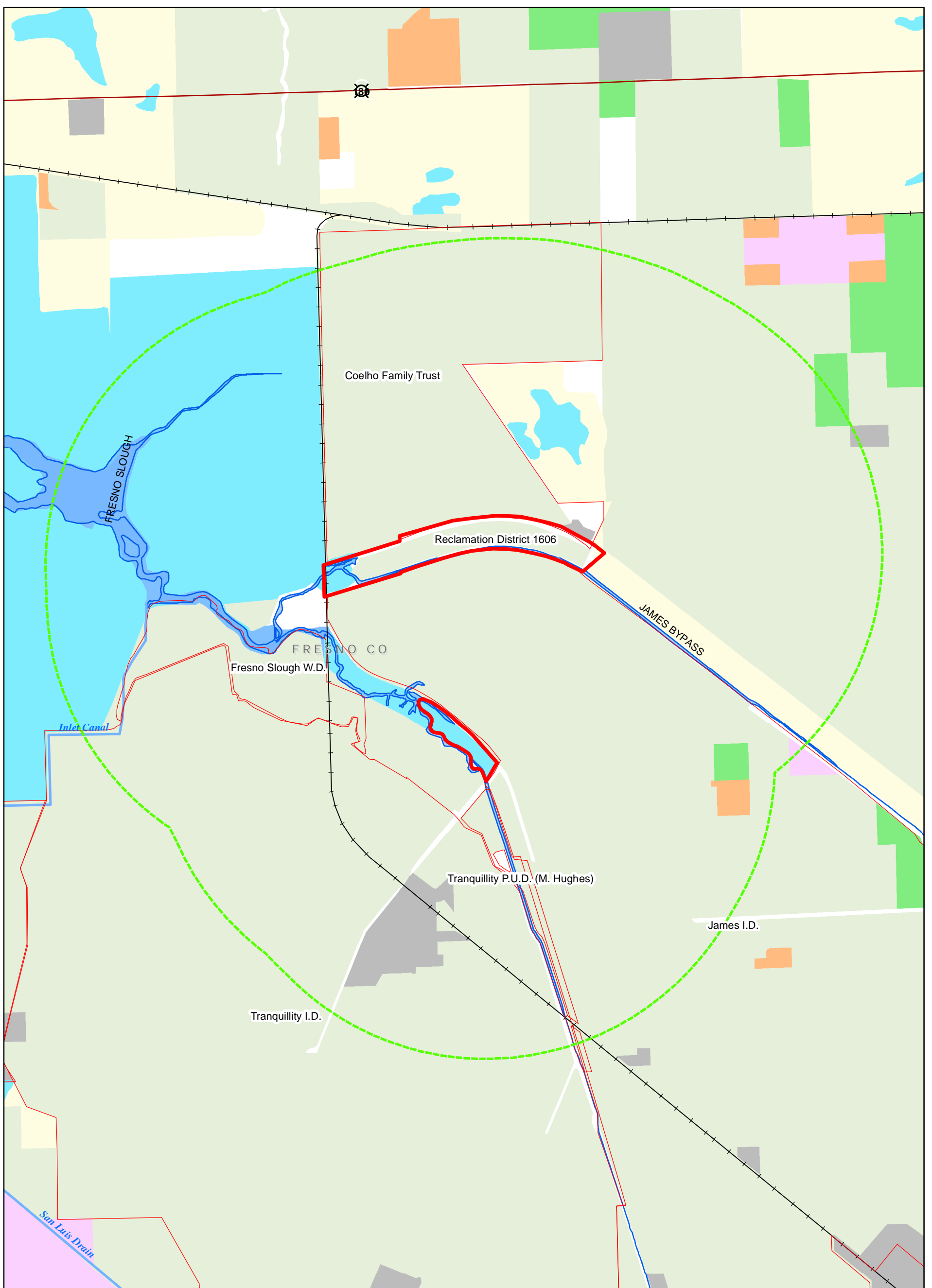


Delta Mendota Canal Unit Water Contractor Boundaries  
 Figure 3.1-31 Plain View Water District Boundary

**Legend**

 District Boundary/Contractor's Service Area

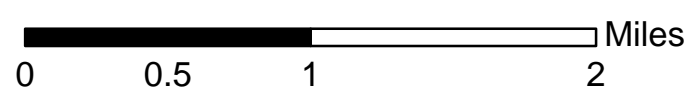


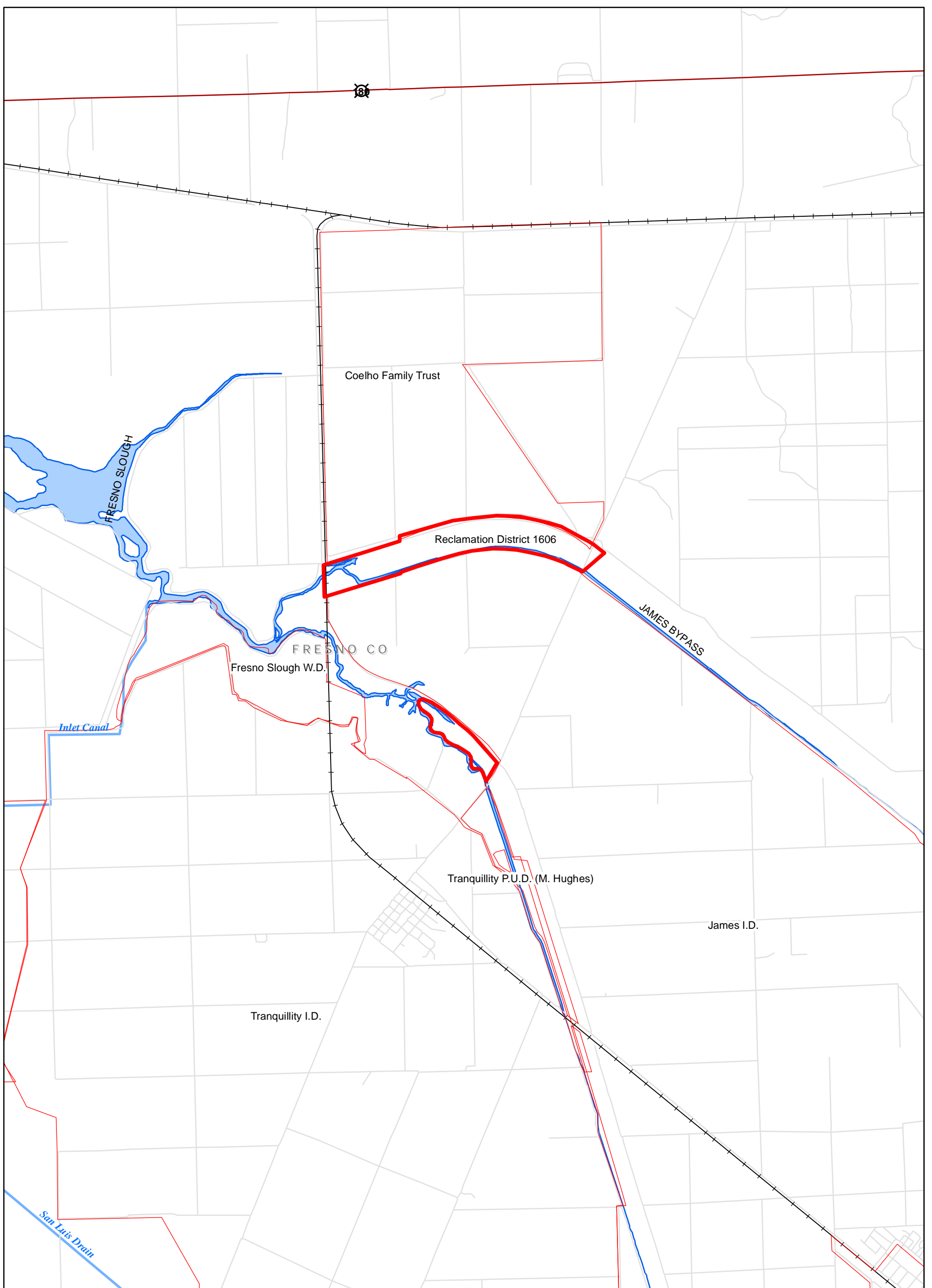


Delta Mendota Canal Unit Water Contractor Boundaries

Figure 3.1-32 Reclamation District #1606  
Current Land Use/Land Cover

- | Legend                     |                                    |                  |
|----------------------------|------------------------------------|------------------|
| Reclamation District 1606  | Confined feeding operations        | Water            |
| <b>Land Use/Land Cover</b> | Idle or retired farmland           | Wetland/riparian |
| <b>Classification</b>      | Ruderal or unclassified rangeland  | Barren           |
| Urban                      | Herbaceous Rangeland               | 2 mile buffer    |
| Cropland and pasture       | Shrub and brush or mixed rangeland |                  |
| Orchards and vineyards     | Forested land                      |                  |





Delta Mendota Canal Unit Water Contractor Boundaries  
 Figure 3.1-33 Reclamation District #1606 Boundary

**Legend**

 District Boundary/Contractor's Service Area

