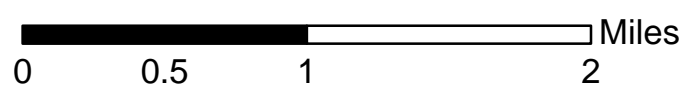
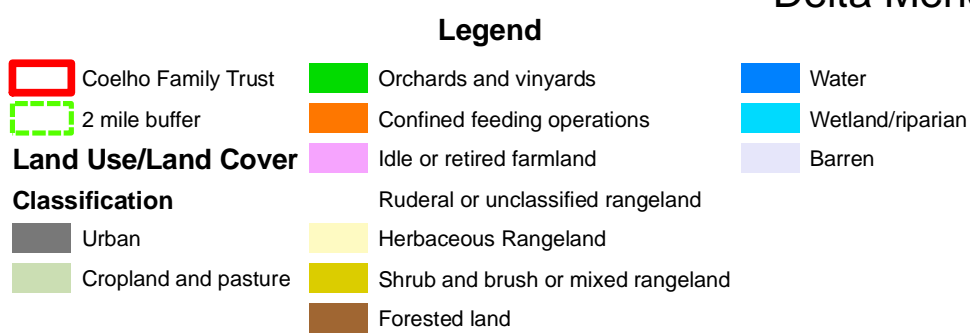
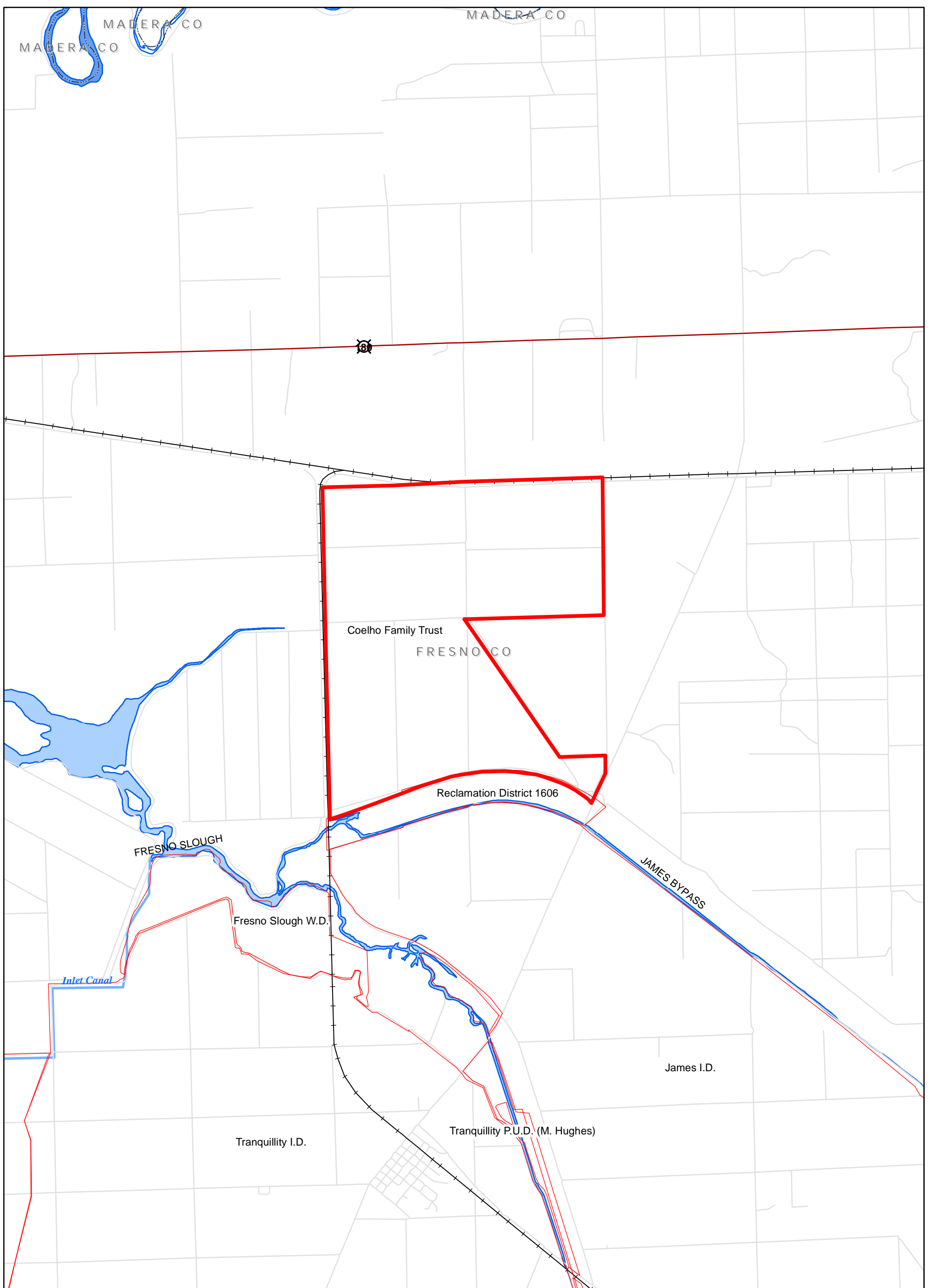


Delta Mendota Canal Unit Water Contractor Boundaries


Figure 3.1-10 Coelho Family Trust  
Current Land Use/Land Cover

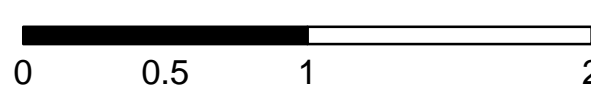




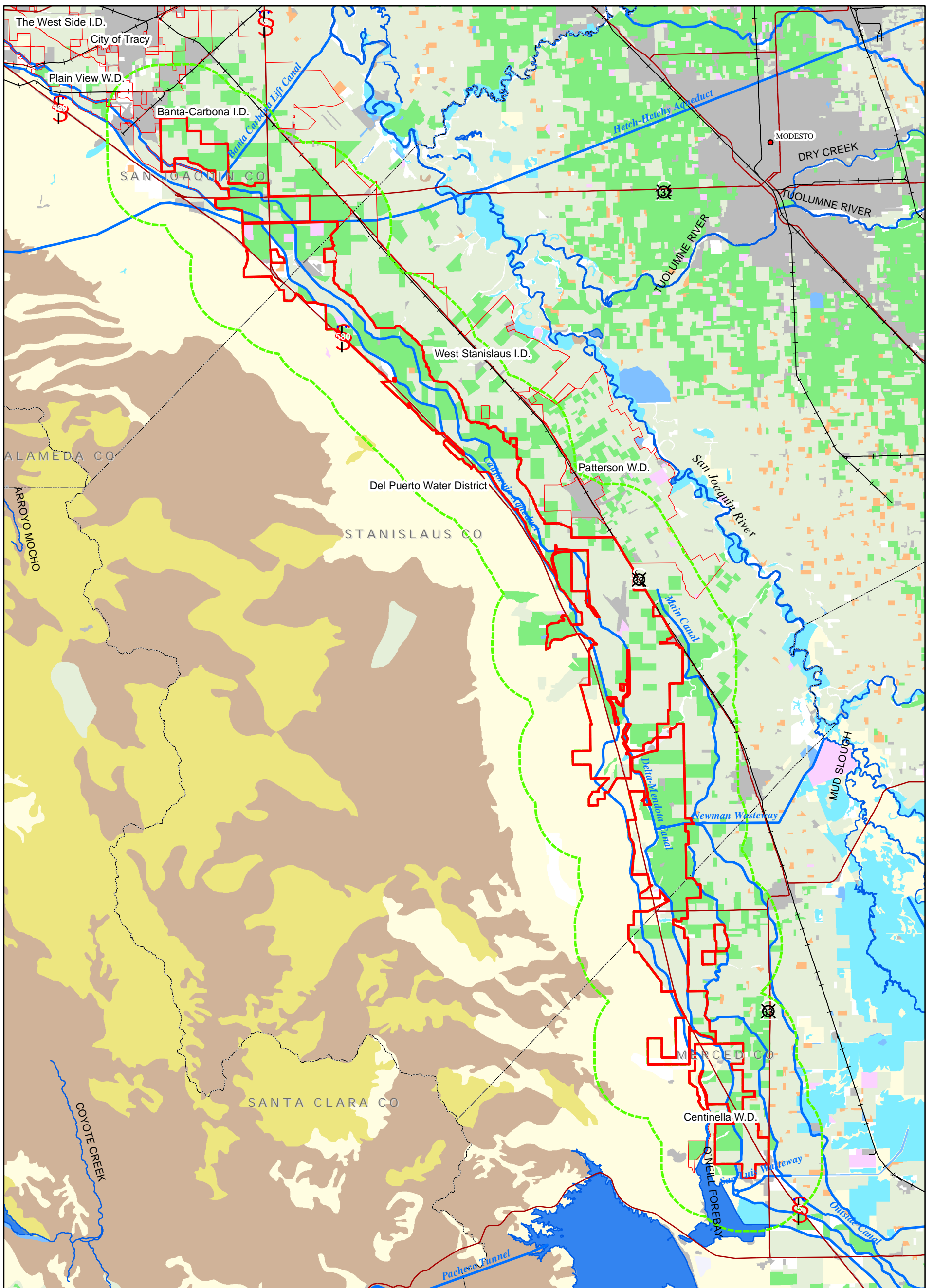
Delta Mendota Canal Unit Water Contractor Boundaries  
 Figure 3.1-11 Coelho Family Trust District Boundary

**Legend**

 District Boundary/Contractor's Service Area

 Miles  
 0 0.5 1 2

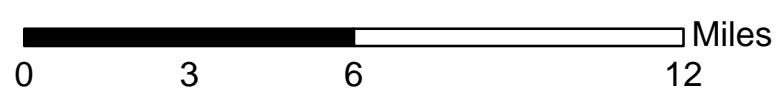




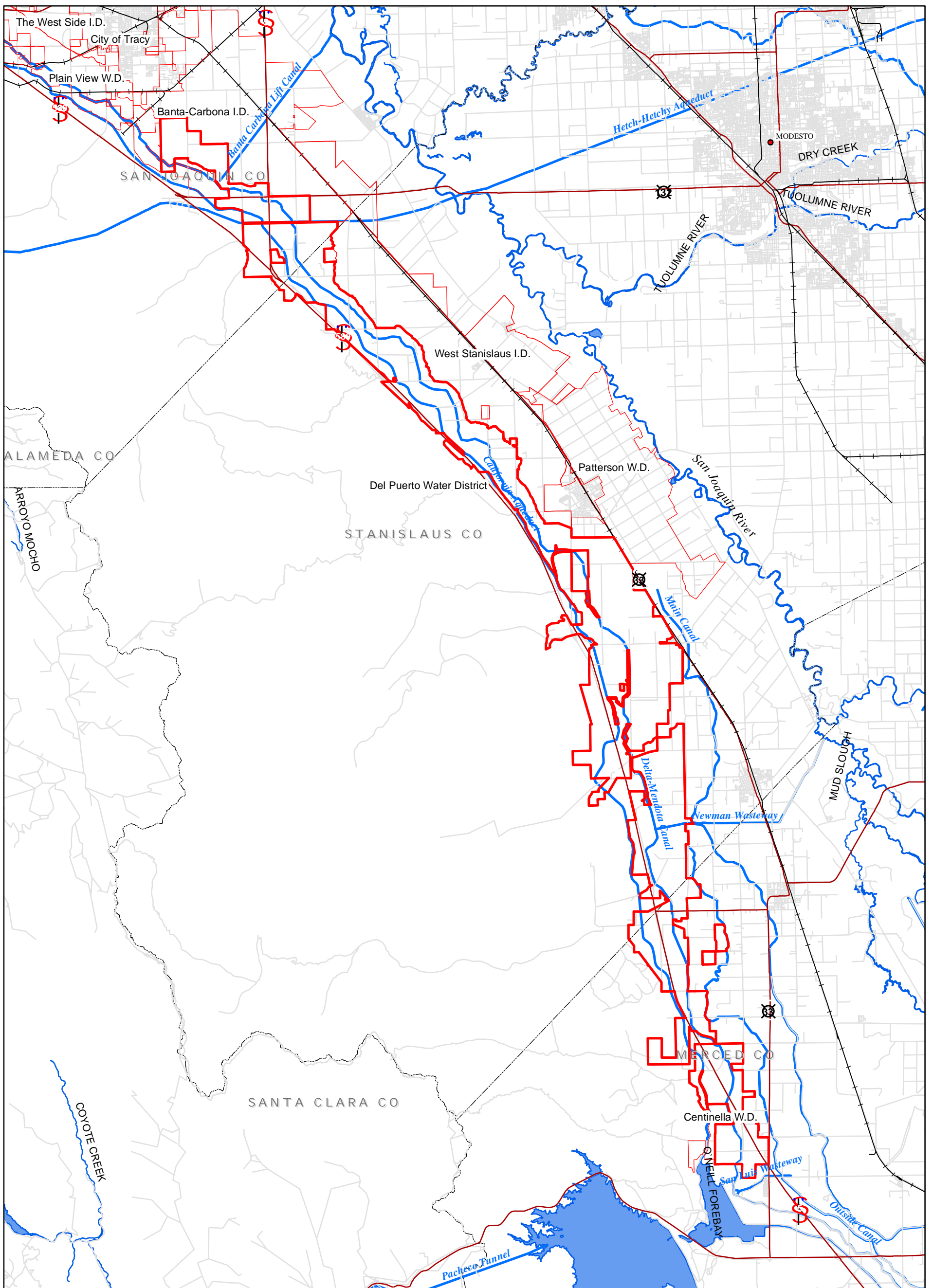
- Del Puerto WD
- 2 mile buffer
- Land Use/Land Cover Classification**
- Urban
- Cropland and pasture
- Orchards and vineyards
- Confined feeding operations
- Idle or retired farmland

- Legend**
- Ruderal or unclassified rangeland
  - Herbaceous Rangeland
  - Shrub and brush or mixed rangeland
  - Forested land
  - Water
  - Wetland/riparian
  - Barren

**Delta Mendota Canal Unit Water Contractor Boundaries**  
**Figure 3.1-12 Del Puerto Water District**  
**Current Land Use/Land Cover**

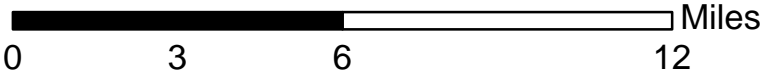






Delta Mendota Canal Unit Water Contractor Boundaries  
 Figure 3.1-13 Del Puerto Water District Boundary

**Legend**  
 [Red Outline] District Boundary/Contractor's Service Area

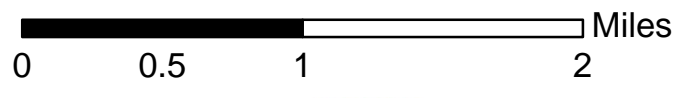


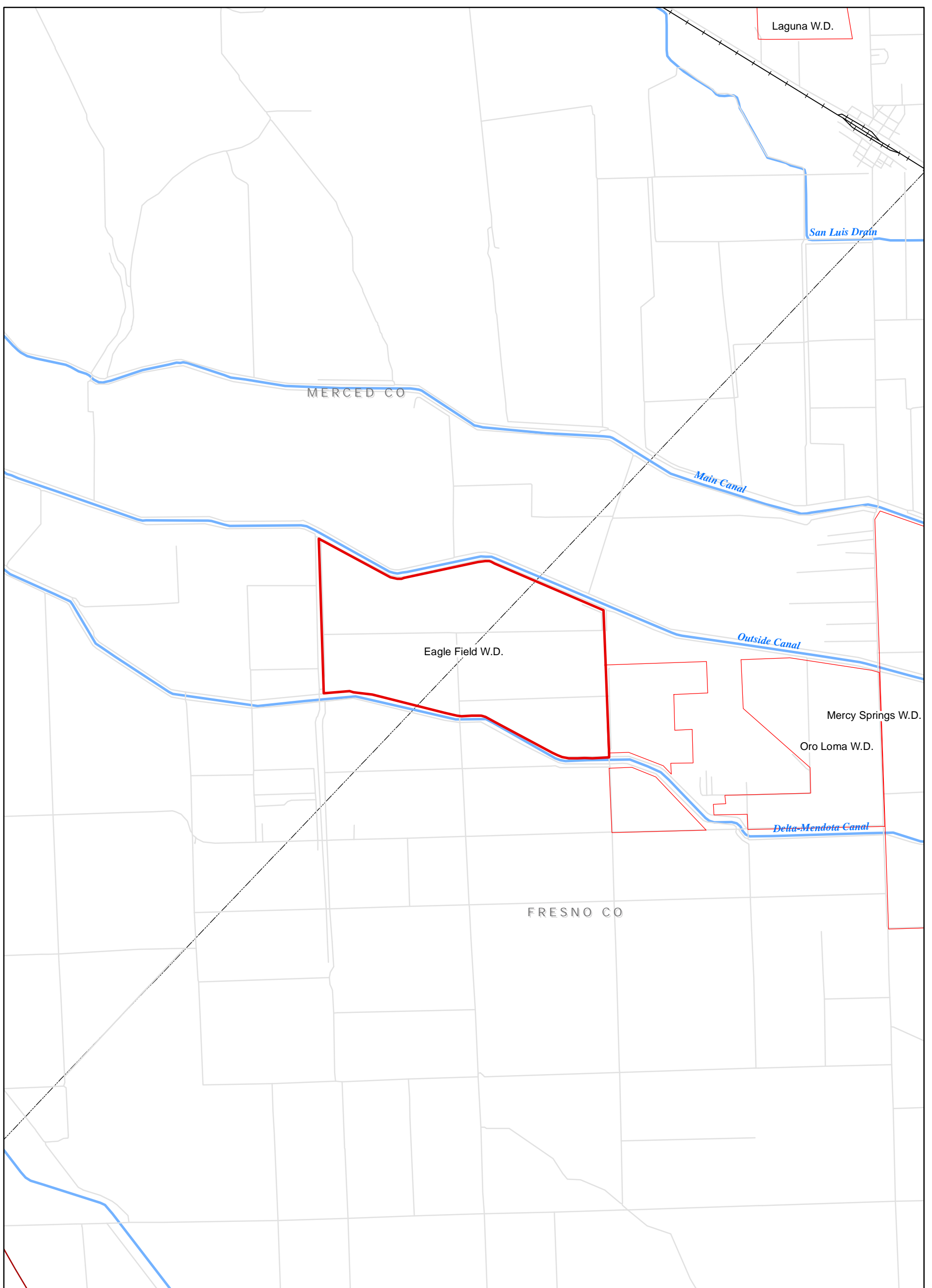


- Legend**
- Eagle Field WD
  - 2 mile buffer
- Land Use/Land Cover Classification**
- |  |   |
|--|---|
| <ul style="list-style-type: none"> <li><span style="display: inline-block; width: 15px; height: 10px; background-color: grey; margin-right: 5px;"></span> Urban</li> <li><span style="display: inline-block; width: 15px; height: 10px; background-color: lightgreen; margin-right: 5px;"></span> Cropland and pasture</li> <li><span style="display: inline-block; width: 15px; height: 10px; background-color: green; margin-right: 5px;"></span> Orchards and vineyards</li> <li><span style="display: inline-block; width: 15px; height: 10px; background-color: orange; margin-right: 5px;"></span> Confined feeding operations</li> <li><span style="display: inline-block; width: 15px; height: 10px; background-color: pink; margin-right: 5px;"></span> Idle or retired farmland</li> </ul> | <ul style="list-style-type: none"> <li><span style="display: inline-block; width: 15px; height: 10px; background-color: yellow; margin-right: 5px;"></span> Ruderal or unclassified rangeland</li> <li><span style="display: inline-block; width: 15px; height: 10px; background-color: gold; margin-right: 5px;"></span> Herbaceous Rangeland</li> <li><span style="display: inline-block; width: 15px; height: 10px; background-color: #FFD700; margin-right: 5px;"></span> Shrub and brush or mixed rangeland</li> <li><span style="display: inline-block; width: 15px; height: 10px; background-color: brown; margin-right: 5px;"></span> Forested land</li> <li><span style="display: inline-block; width: 15px; height: 10px; background-color: blue; margin-right: 5px;"></span> Water</li> <li><span style="display: inline-block; width: 15px; height: 10px; background-color: cyan; margin-right: 5px;"></span> Wetland/riparian</li> <li><span style="display: inline-block; width: 15px; height: 10px; background-color: lightblue; margin-right: 5px;"></span> Barren</li> </ul> |
|--|---|

**Delta Mendota Canal Unit Water Contractor Boundaries**

**Figure 3.1-14 Eagle Field Water District Current Land Use/Land Cover**

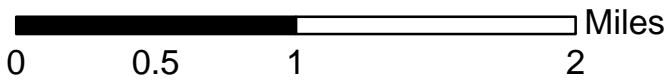


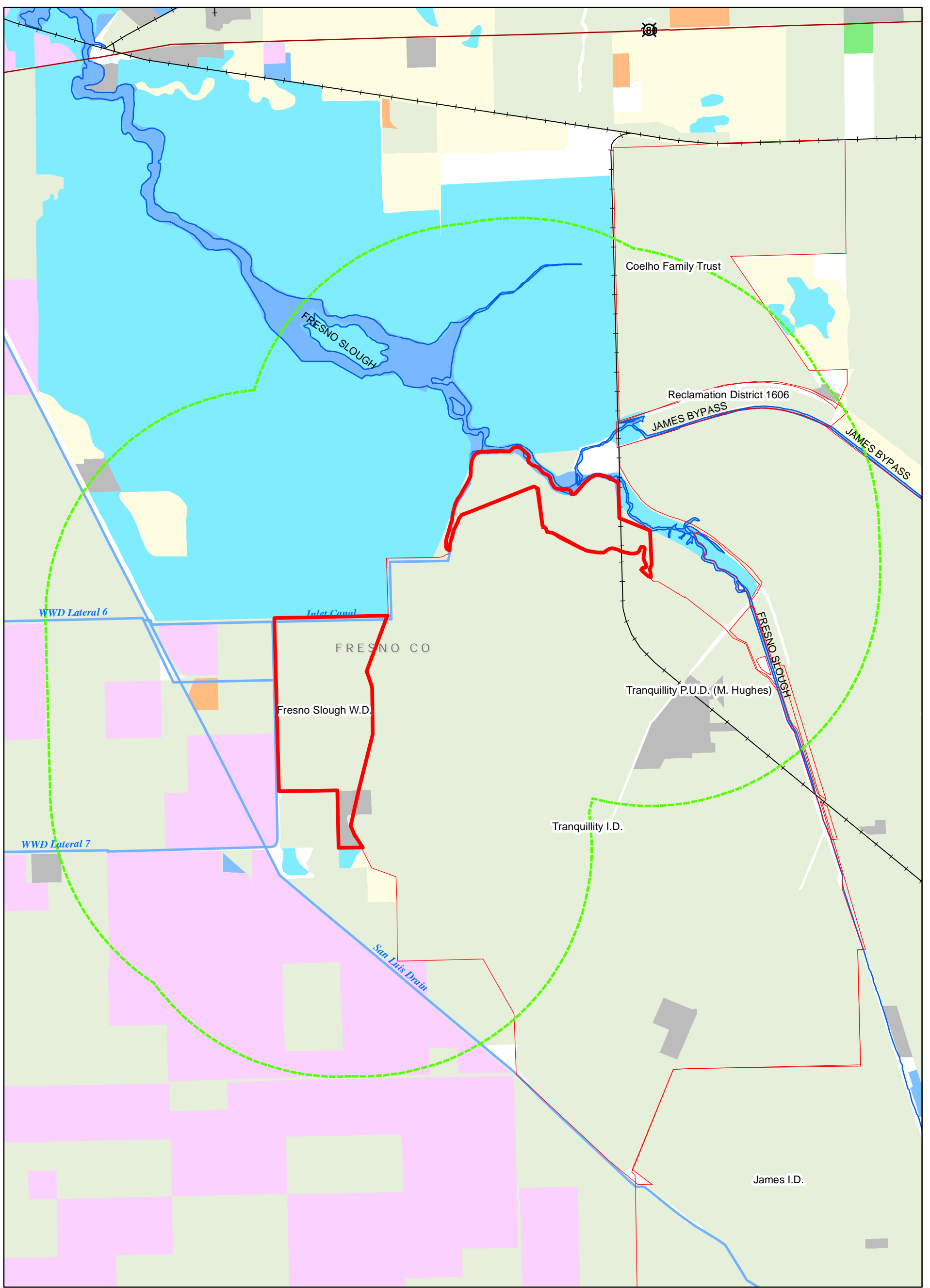


Delta Mendota Canal Unit Water Contractor Boundaries  
 Figure 3.1-15 Eagle Field Water District Boundary

**Legend**

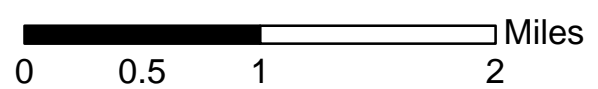
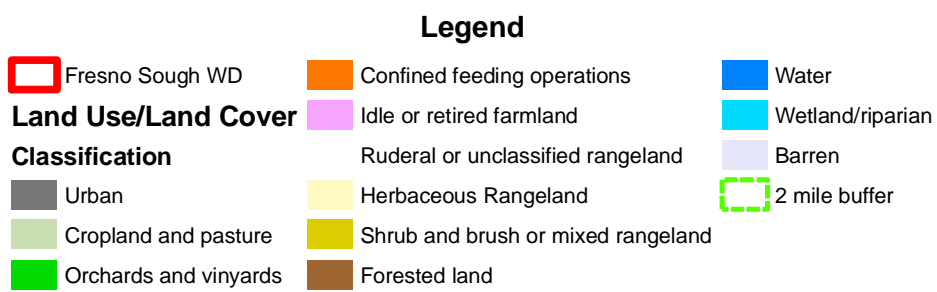
 District Boundary/Contractor's Service Area

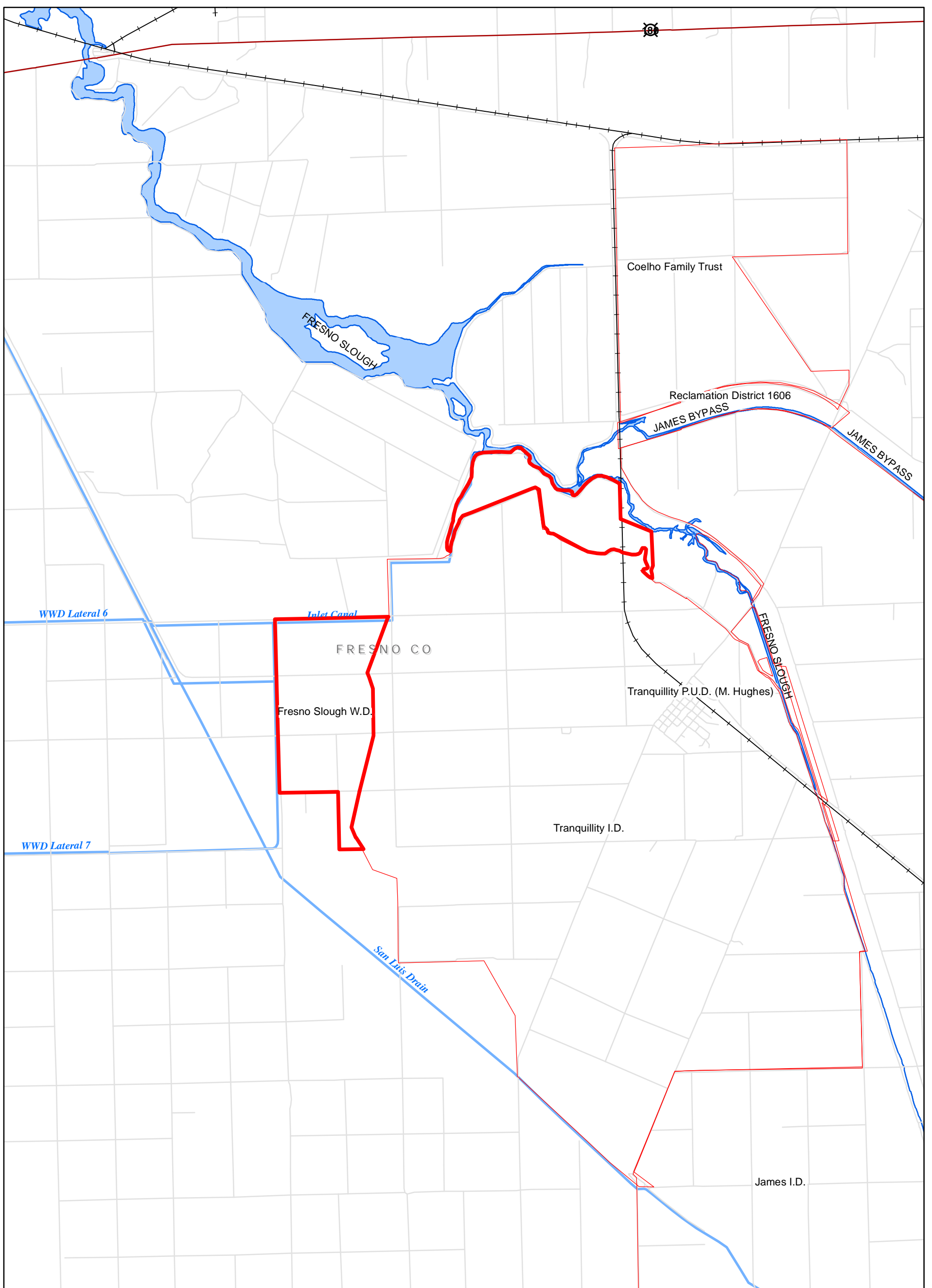




Delta Mendota Canal Unit Water Contractor Boundaries

Figure 3.1-16 Fresno Slough Water District Current Land Use/Land Cover






Delta Mendota Canal Unit Water Contractor Boundaries  
 Figure 3.1-17 Fresno Slough Water District Boundary

**Legend**

 District Boundary/Contractor's Service Area

 Miles  
 0 0.5 1 2

