

## Appendices

Appendix F

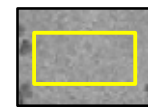
## **Proposed Construction Areas at Restoration Project Sites**

*This appendix presents the proposed construction areas for two new sites (Jeffcoat and Willow Springs mitigation sites), as well as the proposed construction area for the Asbury Diversion Dam project site. The new information presented in this appendix does not necessarily require recirculation for public comment. However, Reclamation and the State Water Board have deemed that the new information presented in this appendix supports significant new information presented in this Draft SEIS/REIR (see Impact 4.1-8 in Section 4.1, Fish, of this document). As a result, the lead agencies have included this appendix here for public comment. The complete new appendix will be presented in the Final EIS/EIR.*

H:\GIS\Projects\battle\_creek\03035\03\arcmap\SEIS\_maps\_11\_04\appendix\_F\_ADD.mxd 02.15.05



**FIGURE F-10**  
PROPOSED CONSTRUCTION AREA  
BATTLE CREEK SALMON AND  
STEELHEAD RESTORATION PROJECT  
ASBURY PUMP HOUSE AND DIVERSION DAM

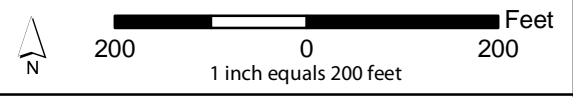


STUDY AREA BOUNDARY

Darrah Springs  
State Fish Hatchery

Asbury Diversion Dam

Baldwin Creek

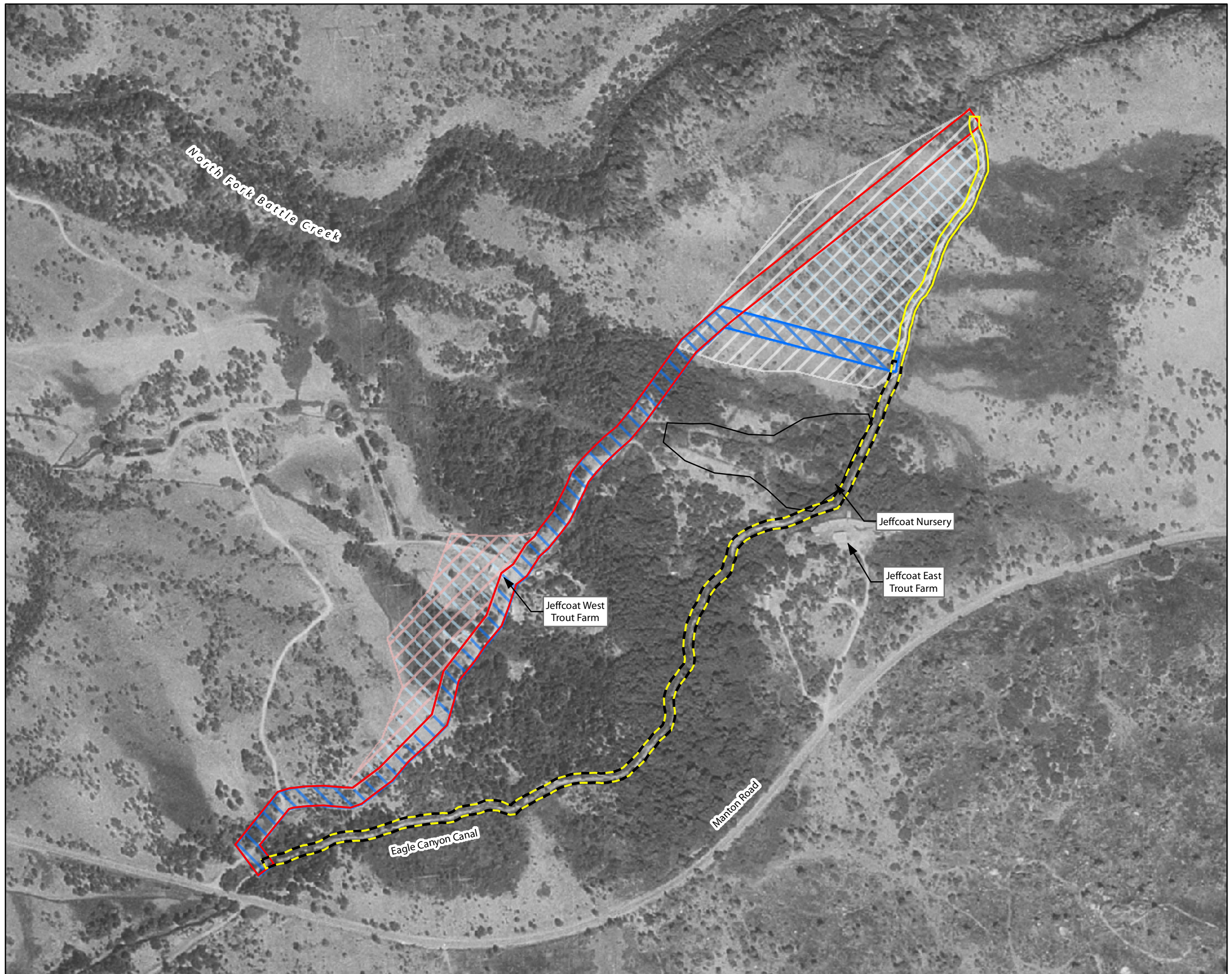


SOURCE: USGS DOQQ 1998








Prepared for the U.S. Department of Interior,  
Bureau of Reclamation and the  
State Water Resources Control Board  
by Jones & Stokes  
February 2005

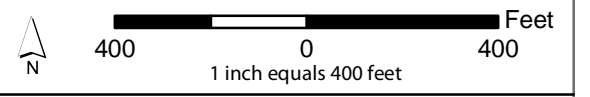


H:\GIS\Projects\Battle\_creek\03\arcmap\SEIS\_maps\_11\_04\appendix\_F\_JEW.mxd 02:15:05



**FIGURE F-11**  
 PROPOSED CONSTRUCTION AREAS  
 BATTLE CREEK SALMON AND  
 STEELHEAD RESTORATION PROJECT  
 JEFFCOAT MITIGATION SITE

-  PROPOSED ALTERNATIVE A
-  POTENTIAL AREA AFFECTED BY ALTERNATIVE A
-  PROPOSED ALTERNATIVE B
-  POTENTIAL AREA AFFECTED BY ALTERNATIVE B
-  PROPOSED ALTERNATIVE C
-  PROPOSED ALTERNATIVE D
-  POTENTIAL STAGING AREA

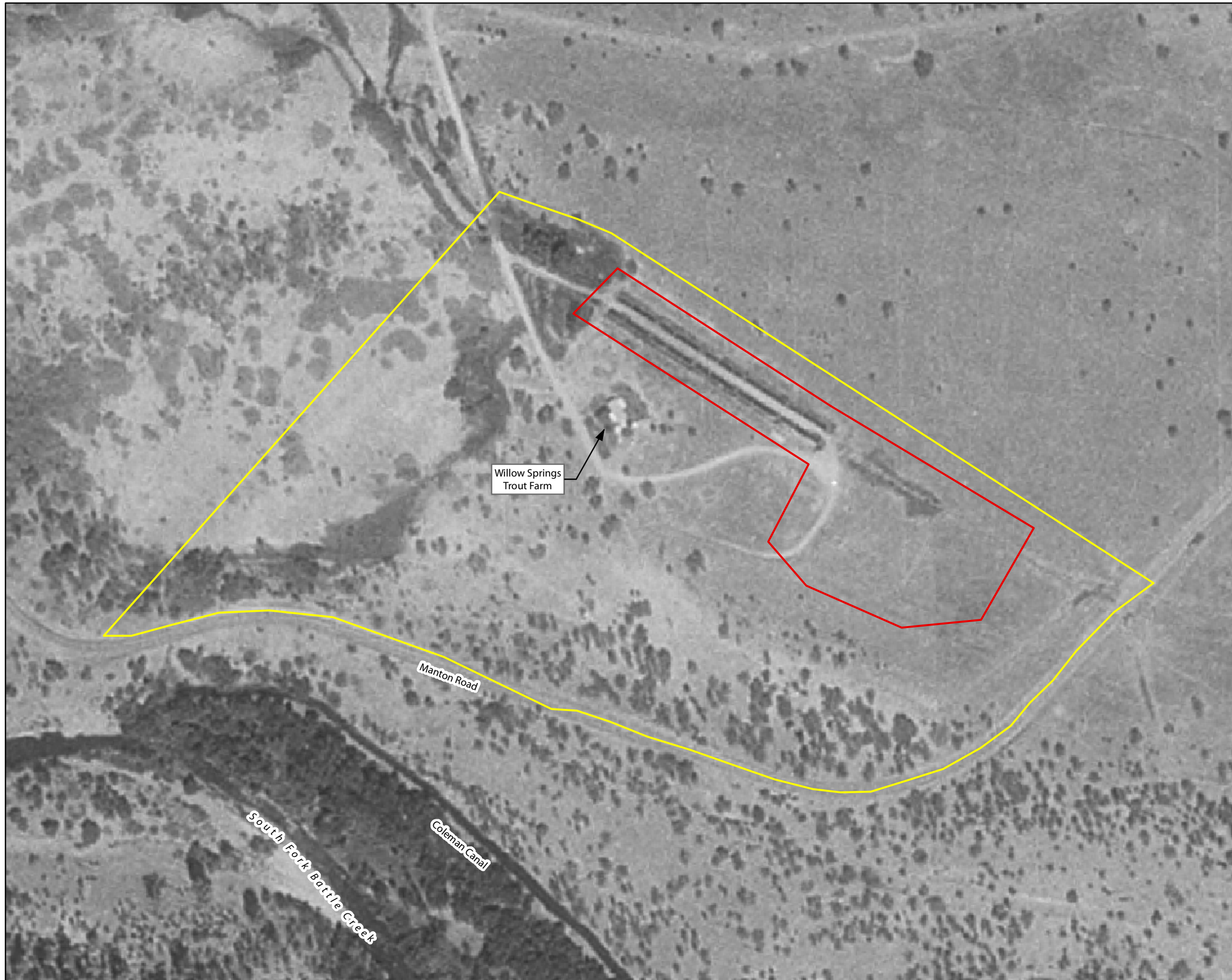


SOURCE: USGS DOQQ 1998

Prepared for the U.S. Department of Interior,  
 Bureau of Reclamation and the  
 State Water Resources Control Board  
 by Jones & Stokes  
 February 2005

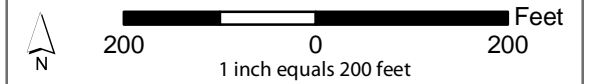
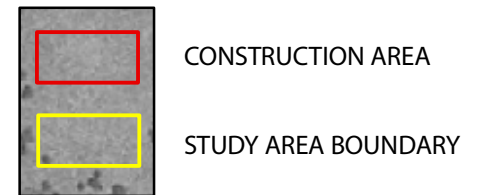


H:\GIS\Projects\battle\_creek\030303\03\arcmap\SEIS\_maps\_11\_04\appendix\_F\_W5.mxd 02.15.05



**FIGURE F-12**

PROPOSED CONSTRUCTION AREA  
BATTLE CREEK SALMON AND  
STEELHEAD RESTORATION PROJECT  
WILLOW SPRINGS MITIGATION SITE  
OPTION A—WATER TREATMENT FACILITY



SOURCE: USGS DOQQ 1998

Prepared for the U.S. Department of Interior,  
Bureau of Reclamation and the  
State Water Resources Control Board  
by Jones & Stokes  
February 2005