

Plate 17. Reservoir Debris Boom – Boomstick Plan, Sections, and Details

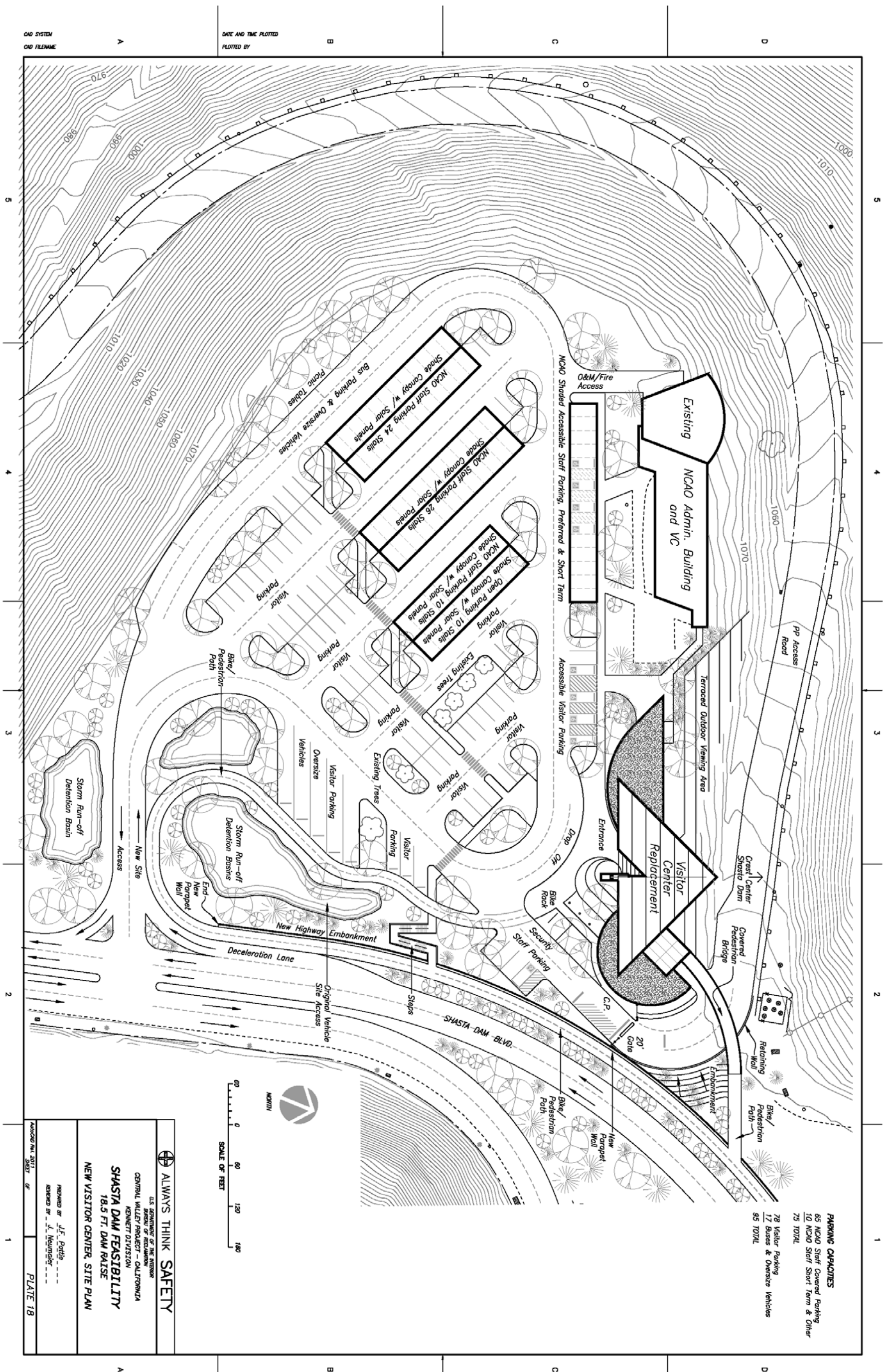


Plate 18. New Visitor Center – Site Master Plan

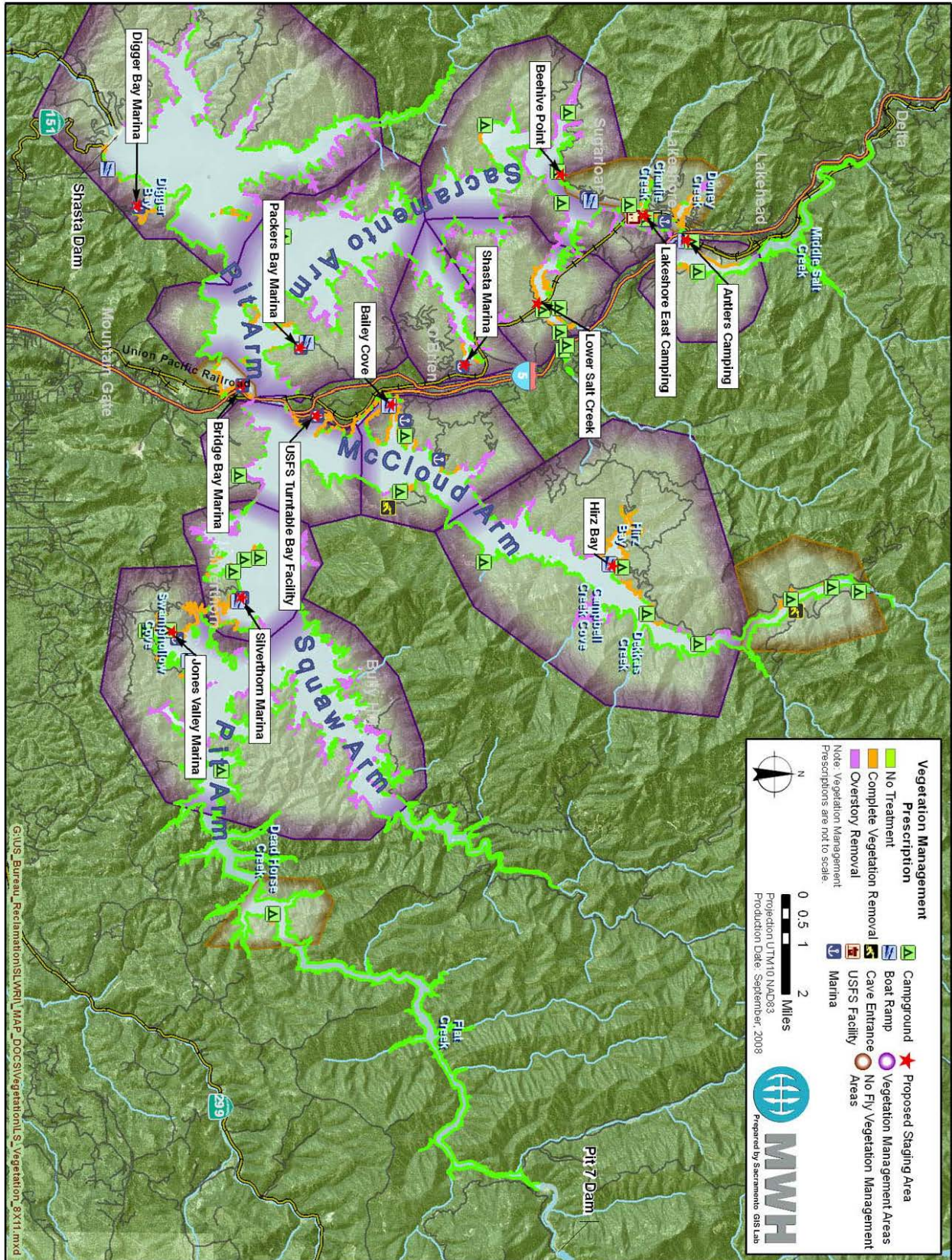


Plate 19. Vegetation Management Prescription

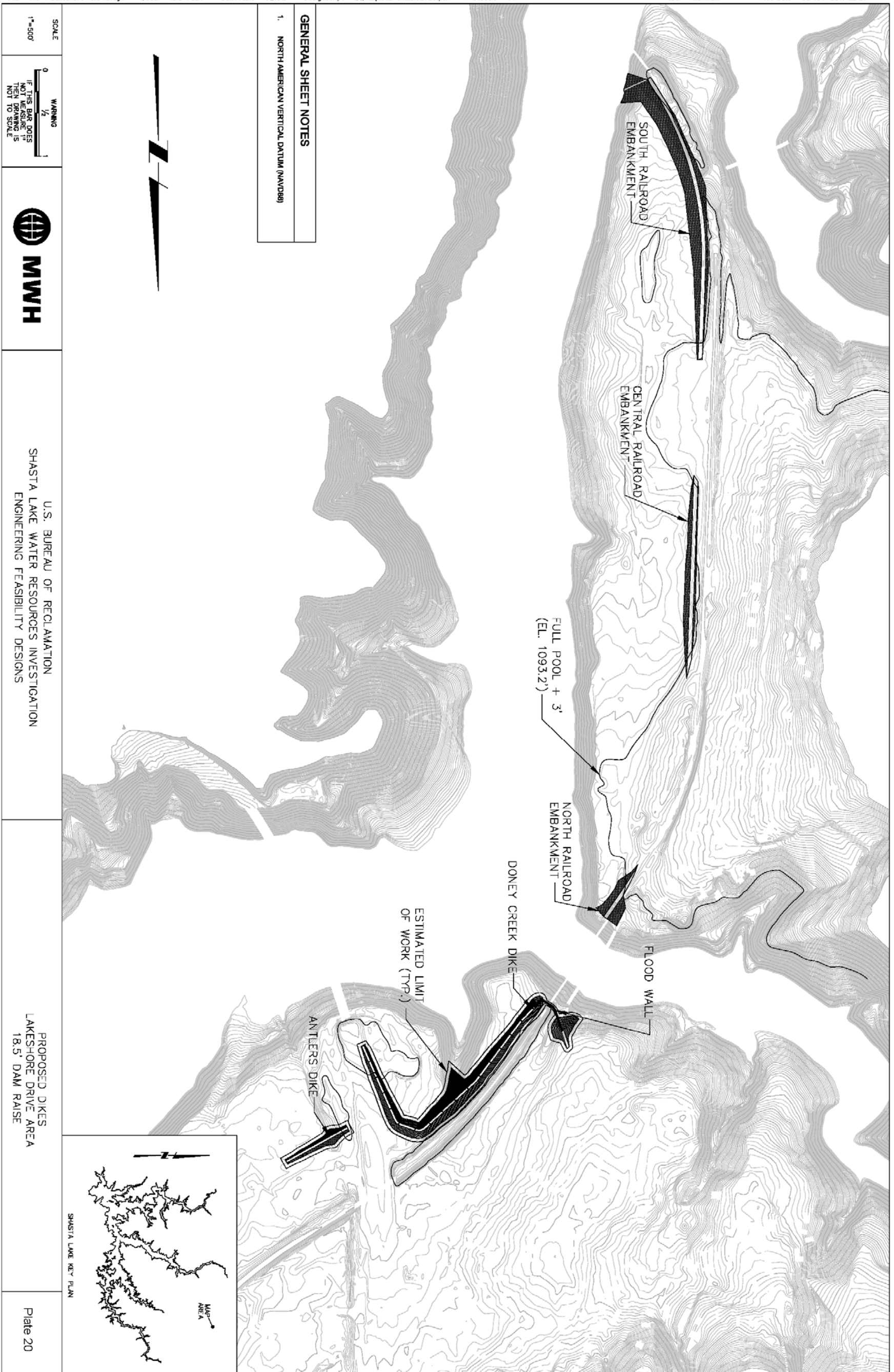
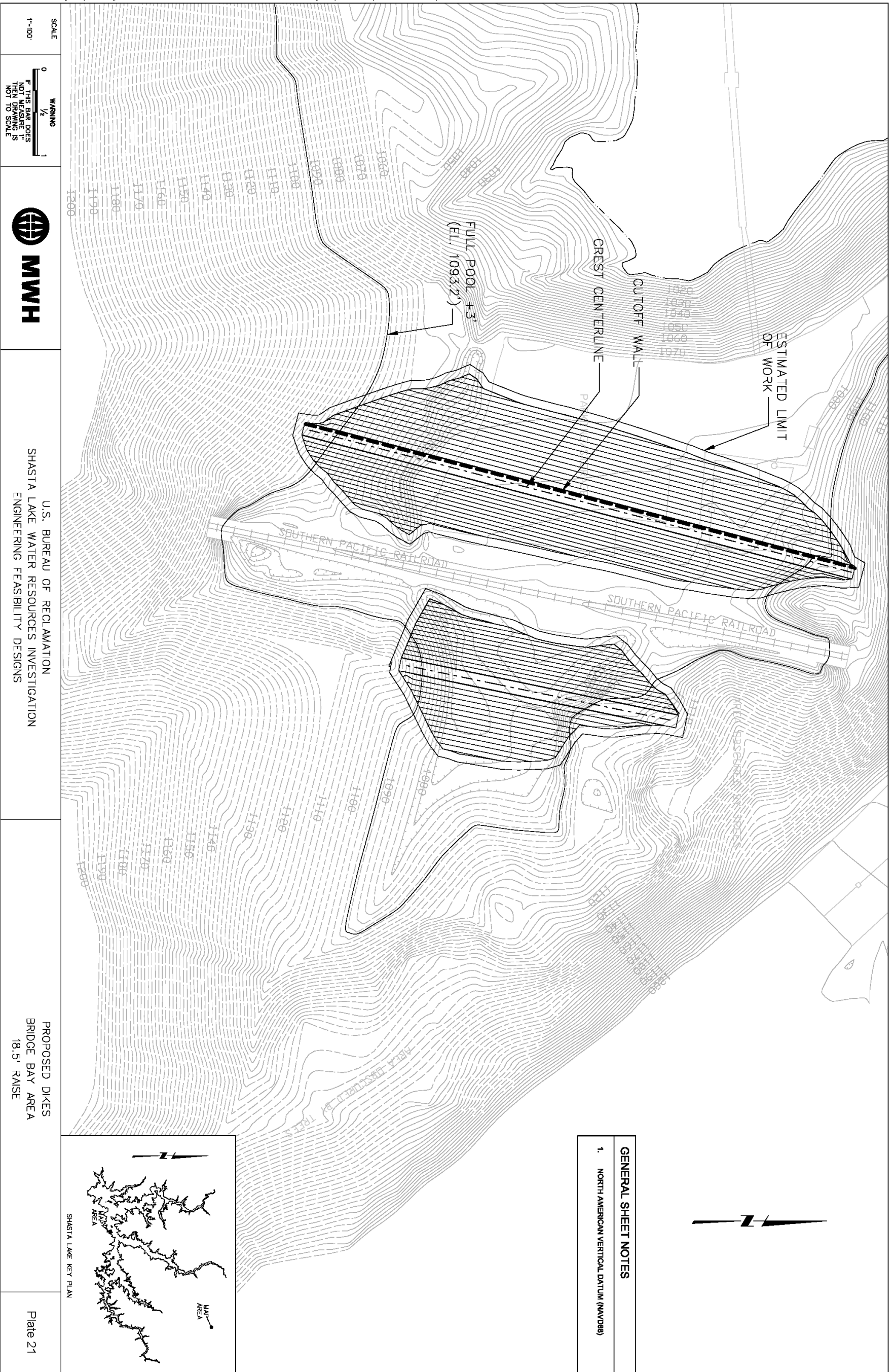
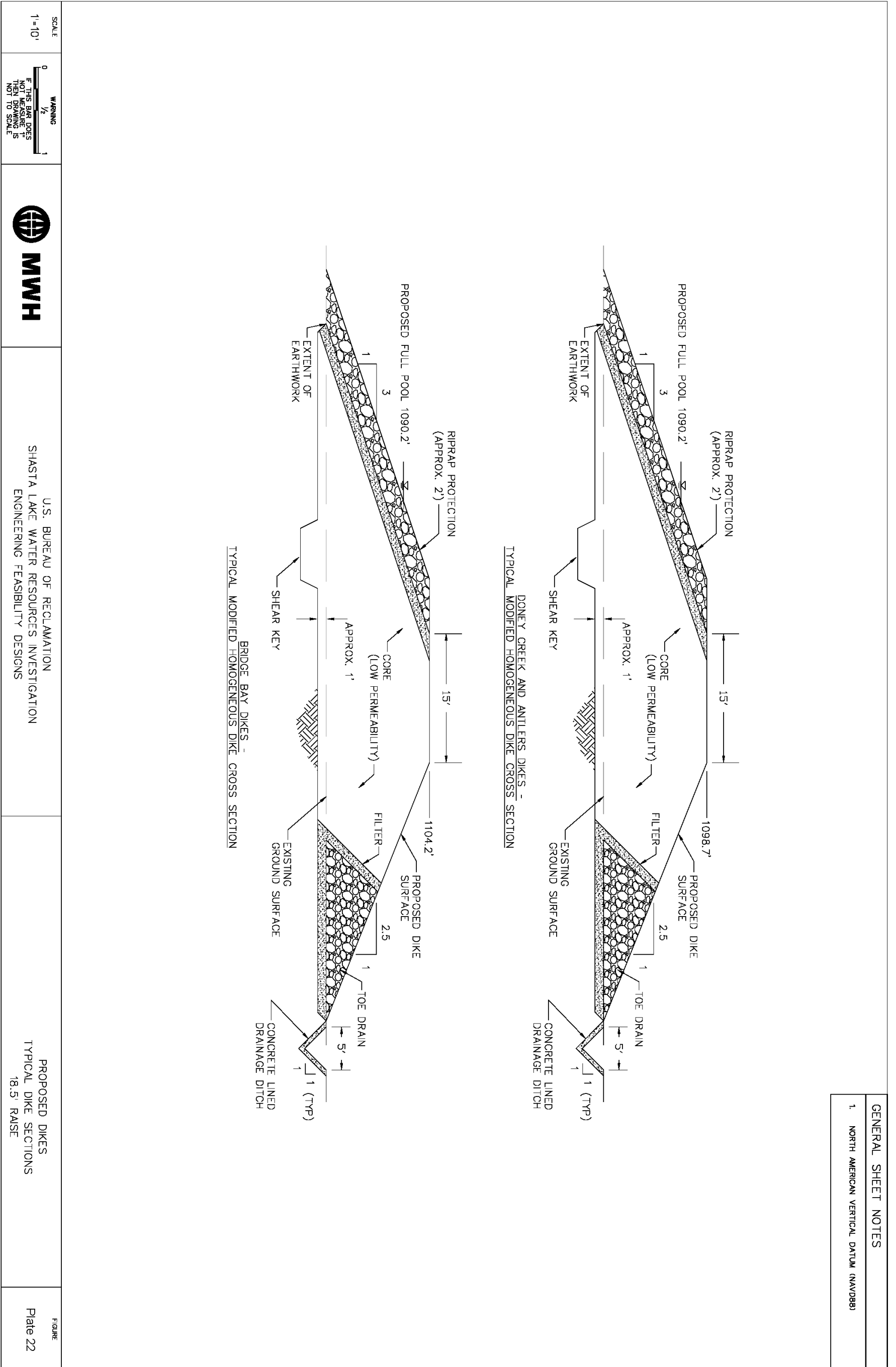


Plate 20. Proposed Dikes Lakeshore Drive Area



GENERAL SHEET NOTES
 1. NORTH AMERICAN VERTICAL DATUM (NAVD88)

Plate 21. Proposed Dikes Bridge Bay Area



GENERAL SHEET NOTES
1. NORTH AMERICAN VERTICAL DATUM (NAVD83)

Plate 22. Proposed Dikes Typical Cross Sections

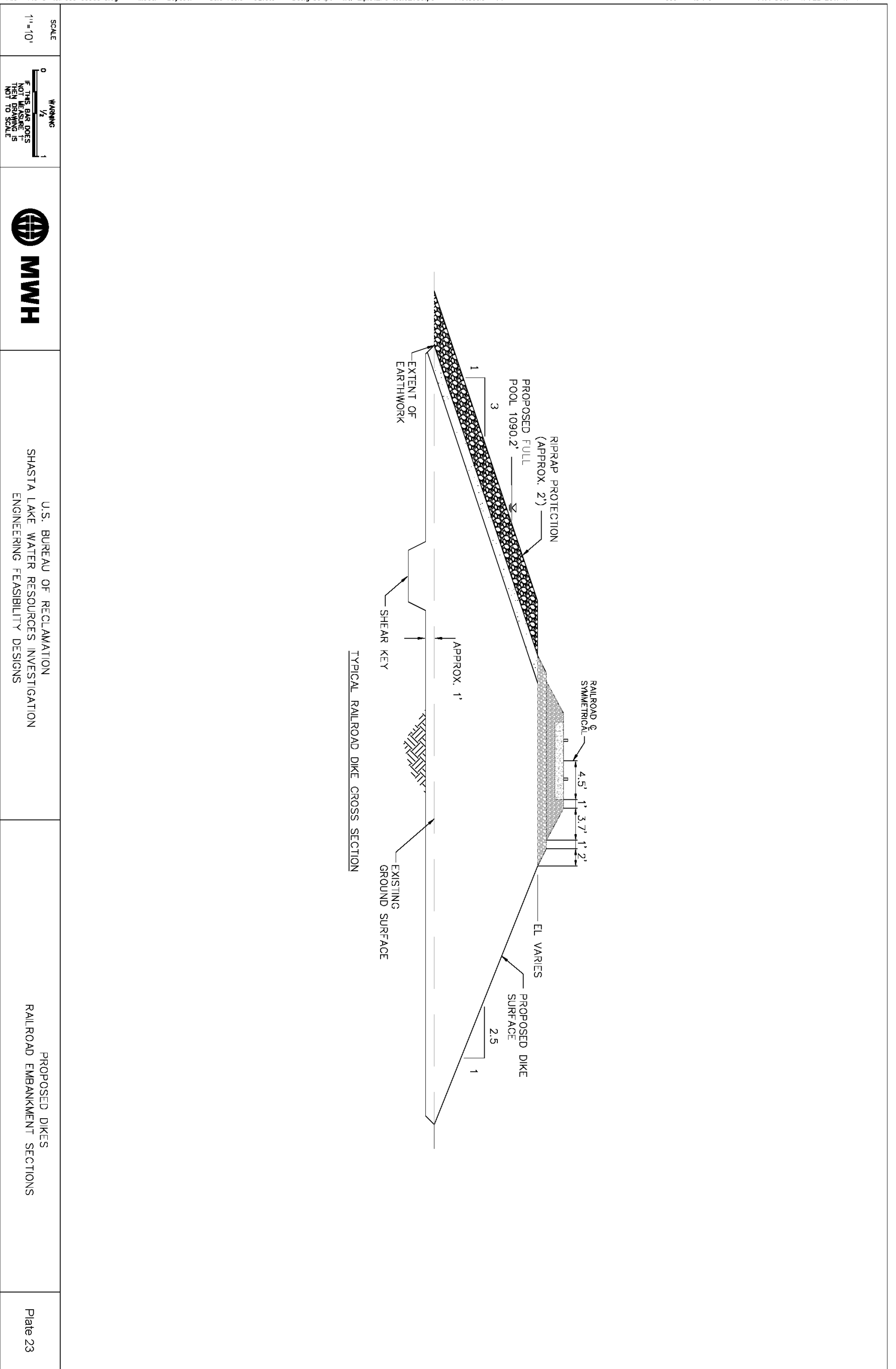
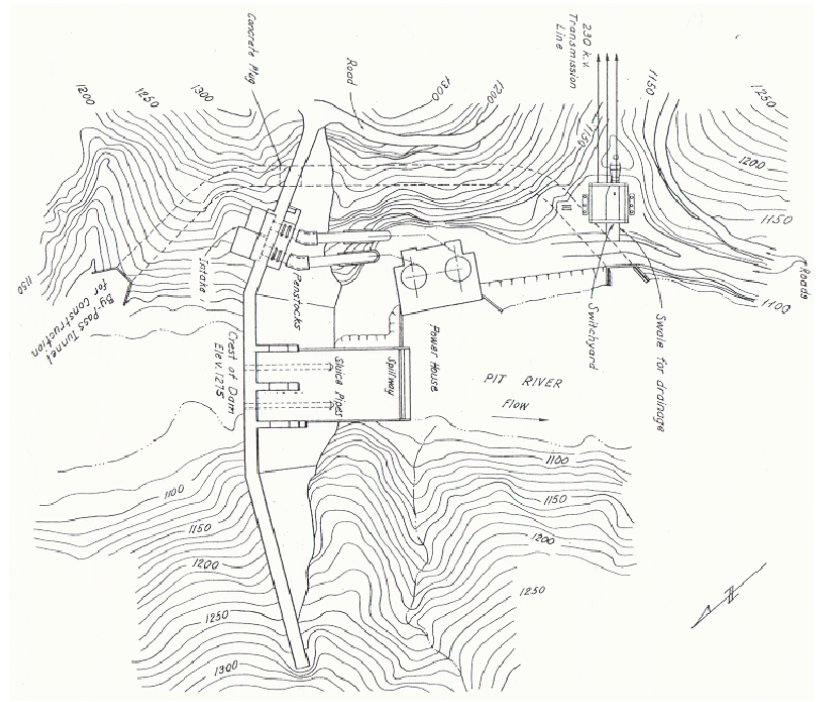
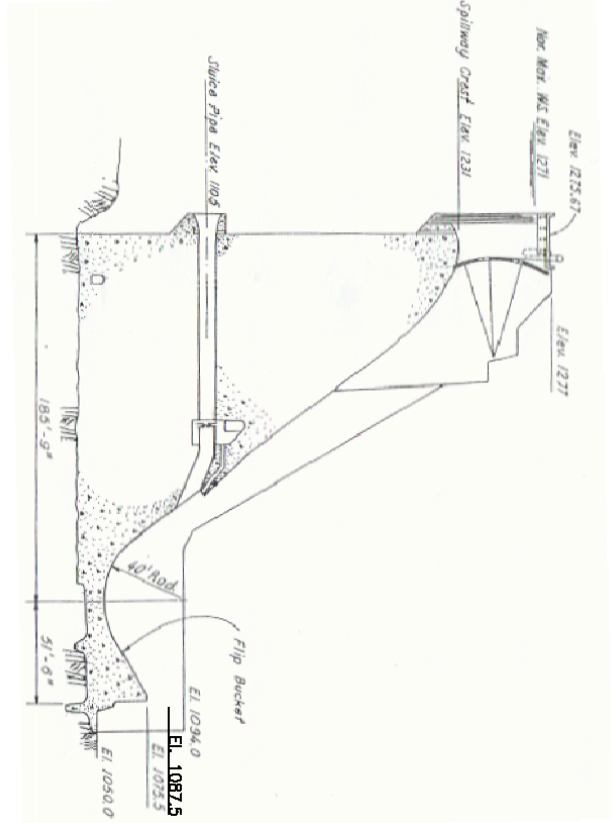


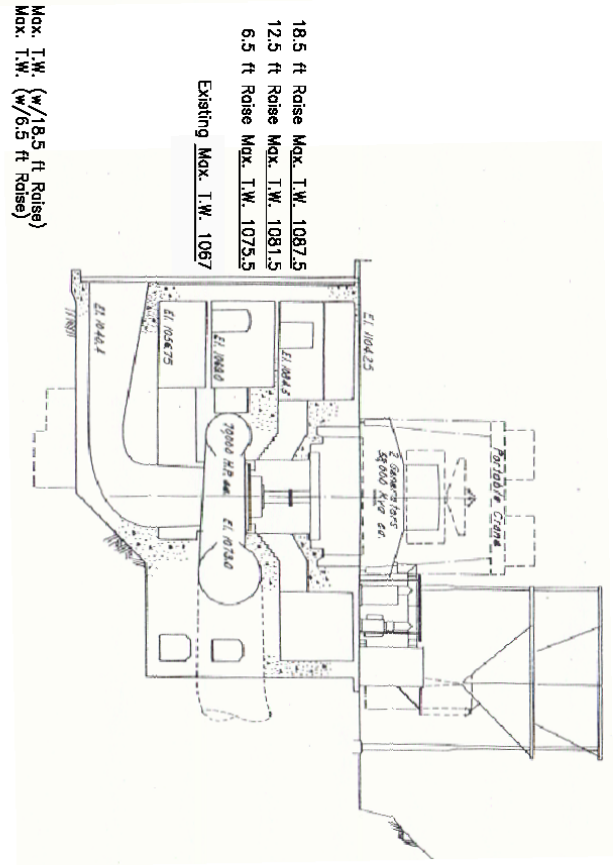
Plate 23. Proposed Dikes Railroad Embankment Sections



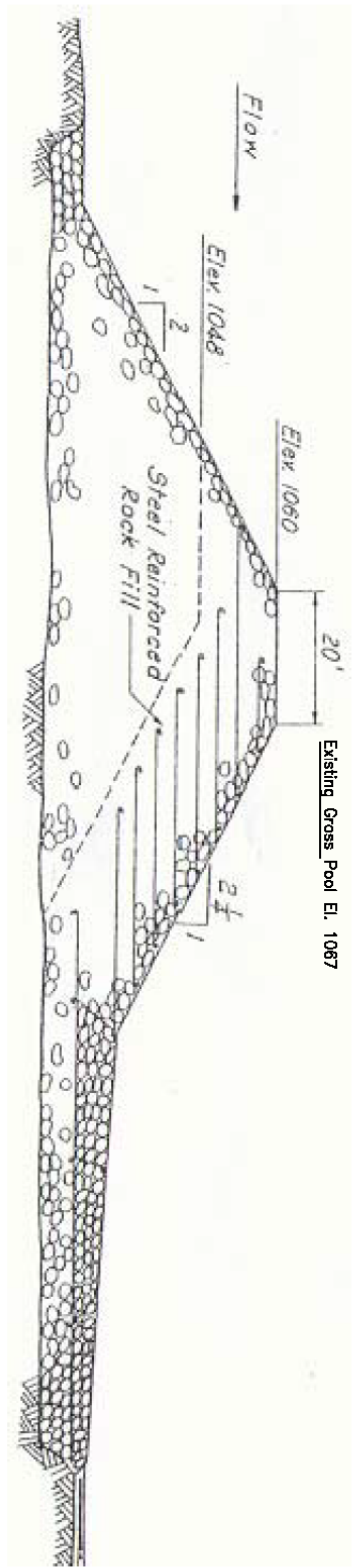
Dam and Powerhouse - Plan



Spillway - Section



Powerhouse - Section



Afterbay Dam

- 18.5 ft Dam Raise Gross Pool El. 1087.5
- 12.5 ft Dam Raise Gross Pool El. 1081.5
- 6.5 ft Dam Raise Gross Pool El. 1075.5
- Existing Gross Pool El. 1067

- Note:
1. All elevations relative to NGVD 1929.
 2. Reference Federal Energy Regulatory Commission (FERC) Exhibit Drawings L-8B, L-9A, Pit 7 Dam, Powerhouse, and Afterbay Dam, McCloud-Pit Development, Pacific Gas and Electric Company

Shasta Lake Water Resources Investigation,
 California

PIT 7 DAM AND POWERHOUSE

U.S. Bureau of Reclamation, Mid-Pacific Region
 February 2011

Plate 24. Pit 7 Dam and Powerhouse

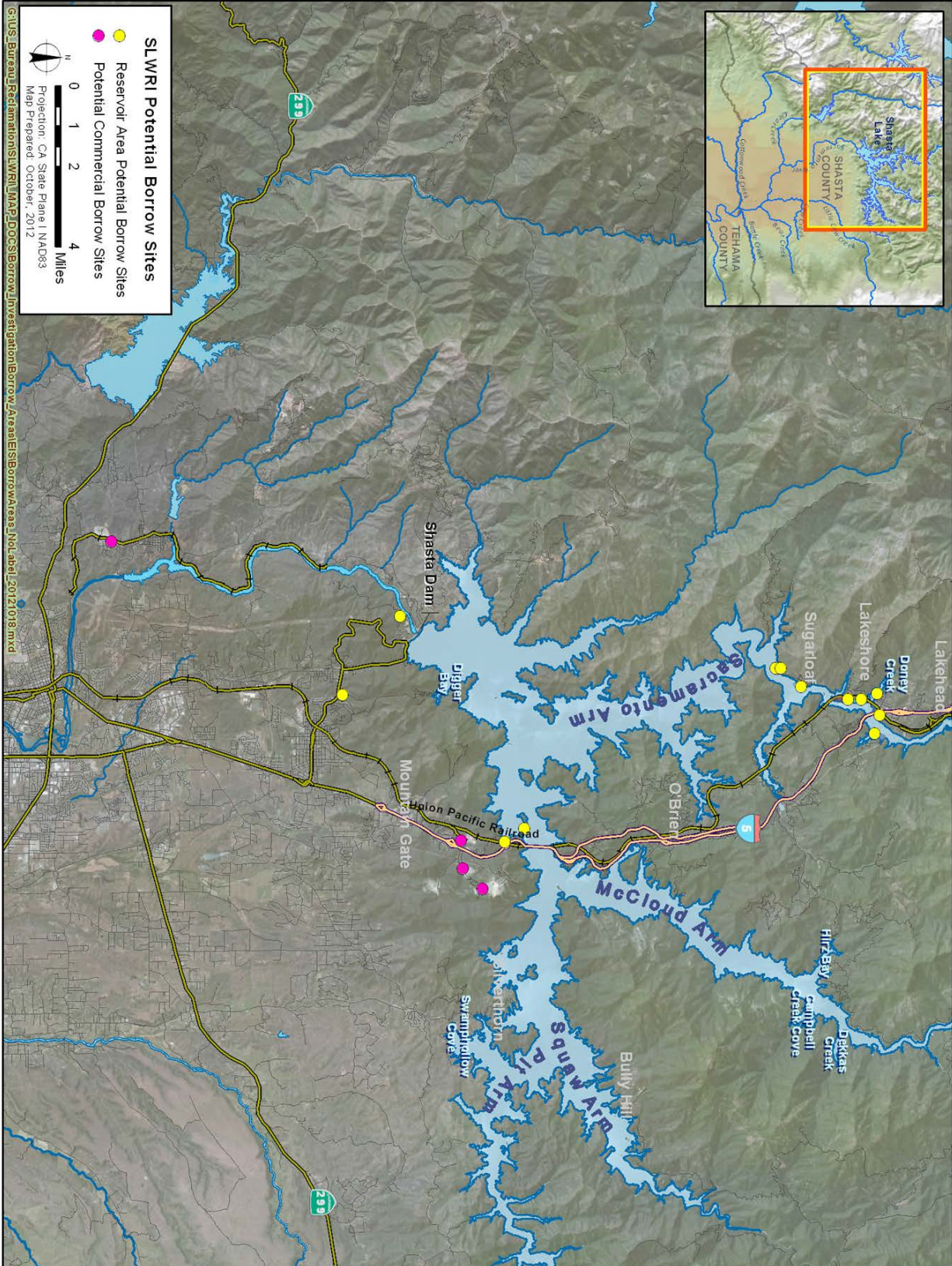
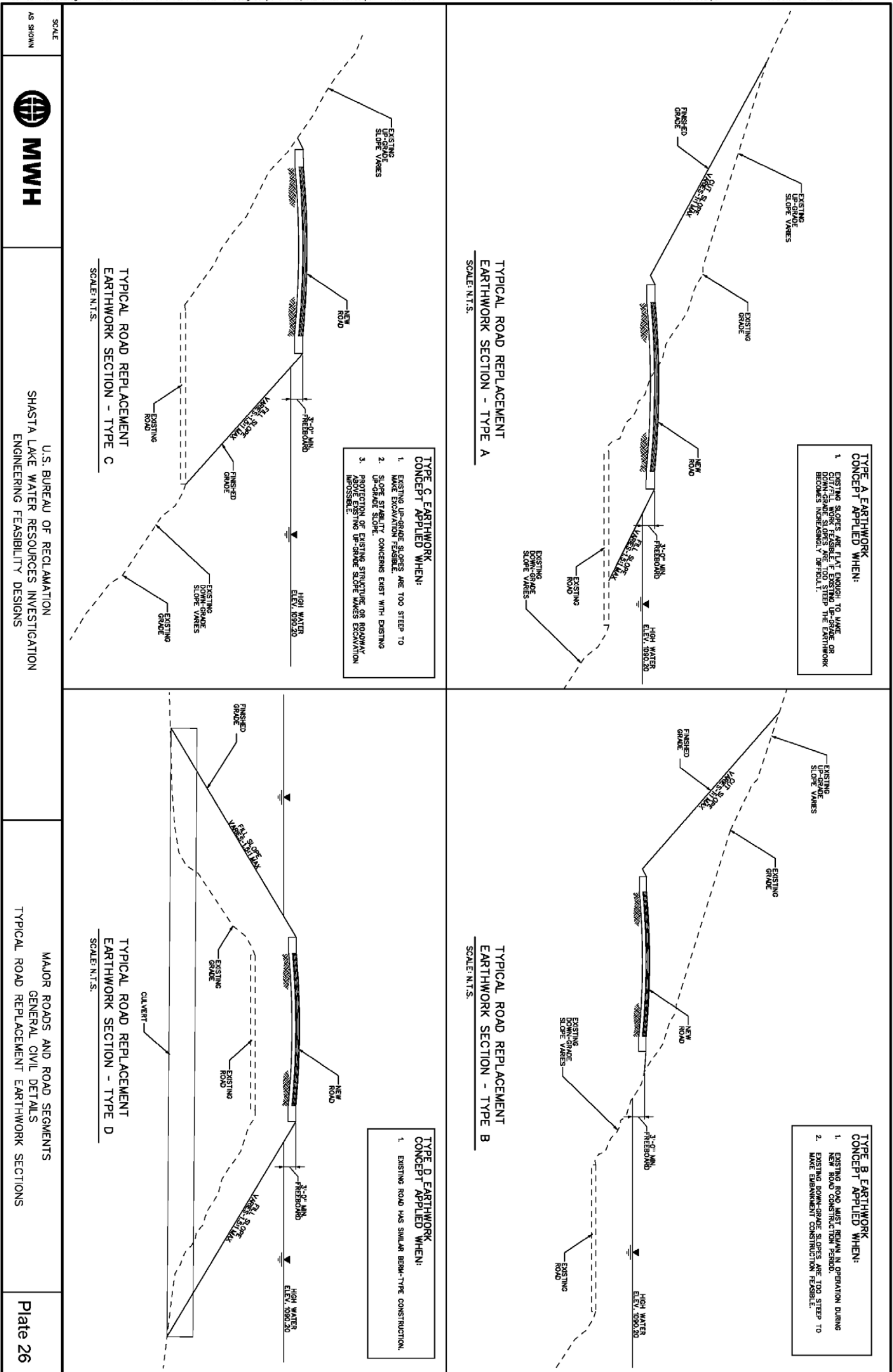
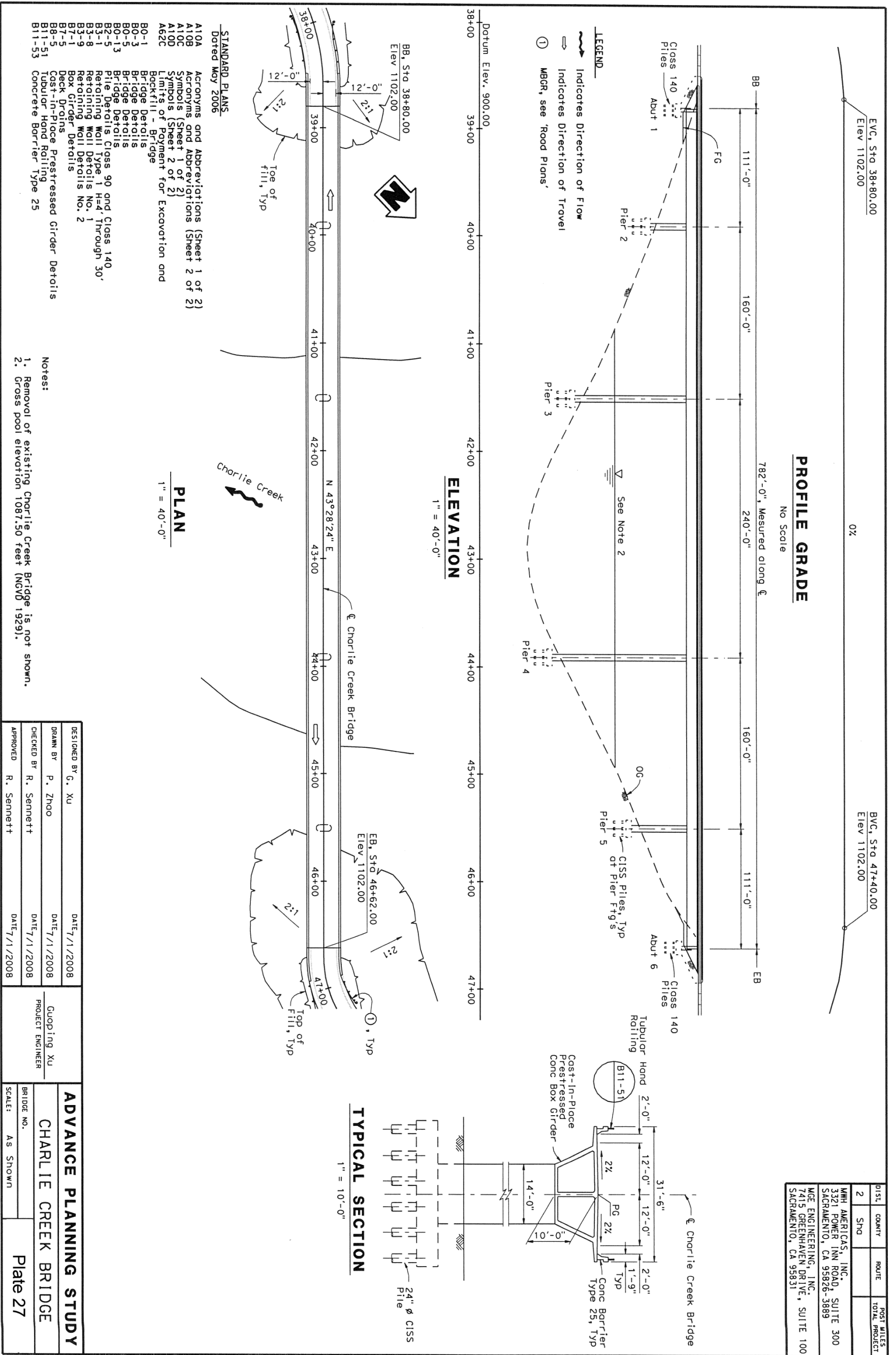


Plate 25. Potential Borrow Sites





DIST.	COUNTY	ROUTE	POST MILES
2	SNO		TOTAL PROJECT

MWH AMERICAS, INC. 3321 POWER INN ROAD, SUITE 300 SACRAMENTO, CA 95826-3889	MGE ENGINEERING, INC. 7415 GREENHAVEN DRIVE, SUITE 100 SACRAMENTO, CA 95831
---	---

Plate 27. Charlie Creek Bridge – Elevation, Plan, and Section

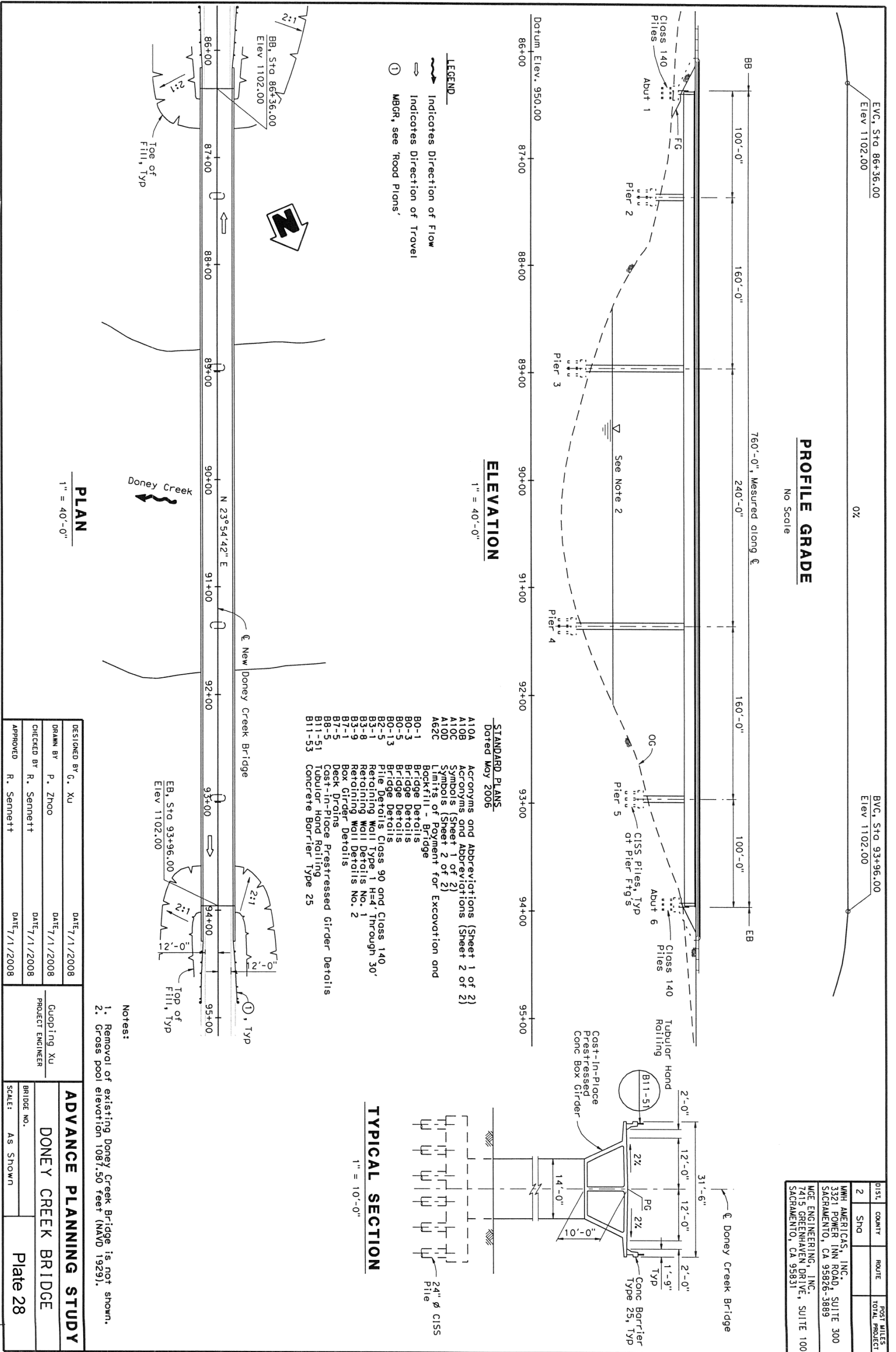


Plate 28. Doney Creek Bridge – Elevation, Plan, and Section