

APPENDIX C

Schematic Plans

SCHEMATIC DESIGN PLANS
& DETAILS
NOT FOR CONSTRUCTION

CALIFORNIA DEPARTMENT OF GENERAL SERVICES AND CALIFORNIA TAHOE CONSERVANCY UPPER TRUCKEE RIVER AND MARSH RESTORATION PROJECT



UPPER TRUCKEE RIVER
AND MARSH RESTORATION
PROJECT

E.I.P. # 560



870 Emerald Bay Road, Suite 400
South Lake Tahoe, CA 96150
Tel: 530.543.5100 Fax: 530.543.5150



295 Highway 50, suite 1
Zephyr Cove, NV 89448
Tel: 775.588.9069

TITLE SHEET

i

REVISIONS

#	description	date

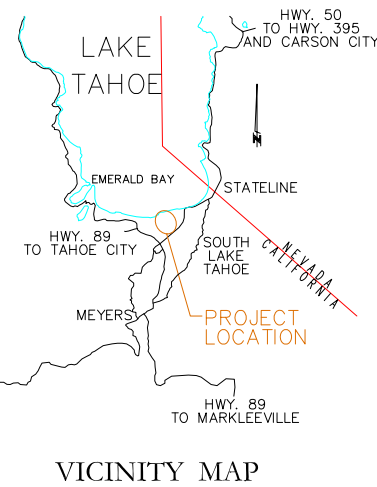
scale:	AS SHOWN
job no.:	00110066.04
drawn by:	MC
checked by:	CM

sheet no.: i

sheet 1 of 45
date: 01/10/13

SHEET INDEX:

TITLE	SHEET NO.
TITLE SHEET	I
INDEX SHEET	II
CONSTRUCTION PHASING	III
PLAN VIEW (ALTERNATIVE 1)	S1
UPSTREAM REACH PLAN (ALTERNATIVE 1)	C1
MID-MARSH PLAN (ALTERNATIVE 1)	C2
DOWNSTREAM REACH PLAN (ALTERNATIVE 1)	C3
DOWNSTREAM REACH CROSS-SECTIONS (ALTERNATIVE 1)	C4
BARTON BEACH BOARDWALK (ALTERNATIVE 1)	C5
PLAN VIEW (ALTERNATIVE 2)	S2
UPSTREAM REACH PLAN (ALTERNATIVE 2)	C6
MID-MARSH PLAN (ALTERNATIVE 2)	C7
DOWNSTREAM REACH PLAN (ALTERNATIVE 2)	C8
DOWNSTREAM REACH CROSS-SECTIONS (ALTERNATIVE 2)	C9
PLAN VIEW (ALTERNATIVE 3)	S3
UPSTREAM REACH PLAN (ALTERNATIVE 3)	C10
MID-MARSH PLAN SHEET A (ALTERNATIVE 3)	C11
MID-MARSH PLAN SHEET B (ALTERNATIVE 3)	C12
DOWNSTREAM REACH PLAN (ALTERNATIVE 3)	C13
DOWNSTREAM REACH CROSS-SECTIONS (ALTERNATIVE 3)	C14
PLAN VIEW (ALTERNATIVE 4)	S4
UPSTREAM REACH PLAN (ALTERNATIVE 4)	C15
MID-MARSH PLAN (ALTERNATIVE 4)	C16
DOWNSTREAM REACH PLAN (ALTERNATIVE 4)	C17
DOWNSTREAM REACH CROSS-SECTIONS (ALTERNATIVE 4)	C18
DETAILS	D1
DETAILS	D2
DETAILS	D3
DETAILS	D4
DETAILS	D5
DETAILS	D6
DETAILS	D7
DETAILS	D8
DETAILS	D9
BIKE TRAIL	L1
FOOT TRAIL	L2
VIEW POINT	L3
BRIDGE	L4
BOARDWALK	L5
OBSERVATION AREA TYPE 1 - PUBLIC ACCESS	L6
OBSERVATION AREA TYPE 2 - HABITAT PROTECTION	L7
FISHING PLATFORM	L8
EXISTING RIVER ACCESS STABILIZATION	L9
SELF-SERVICE VISITORS CENTER	L10
REVEGETATION SECTION AND PLANT LIST	L11



GENERAL NOTES

- 1. ALL IMPROVEMENTS SHALL BE ACCOMPLISHED UNDER THE APPROVAL, INSPECTION, AND TO THE SATISFACTION OF THE CALIFORNIA DEPARTMENT OF GENERAL SERVICES (DGS). IMPROVEMENT CONSTRUCTION SHALL COMPLY WITH THESE PLANS AND THE 2010 CALTRANS STANDARD PLANS FOR CONSTRUCTION OF LOCAL STREETS AND ROADS. UNLESS NOTED OTHERWISE, ALL REFERENCES TO THE "STANDARD SPECIFICATIONS" SHALL MEAN THE STATE OF CALIFORNIA, DEPARTMENT OF TRANSPORTATION (CALTRANS) STANDARD SPECIFICATIONS FOR CONSTRUCTION OF LOCAL STREETS AND ROADS, 2010, INCLUDING THE AMENDMENTS TO THE 2010 STANDARD SPECIFICATIONS. CONSTRUCTION NOT SPECIFIED ON THESE PLANS OR IN SPECIFIC CITY OF SOUTH LAKE TAHOE (CSLT) ORDINANCES SHALL CONFORM TO THE REQUIREMENTS OF THE STANDARD SPECIFICATIONS. THE CONTRACTOR IS OBLIGATED TO BE FAMILIAR WITH APPLICABLE SECTIONS OF THE STANDARD SPECIFICATIONS NOT DISCUSSED IN THE GENERAL NOTES. THE CONTRACT SPECIAL PROVISIONS SHALL SUPERSEDE THOSE OF THE STANDARD SPECIFICATIONS WHERE DISCREPANCIES OCCUR.
- 2. CONSTRUCTION HOURS SHALL BE WEEKDAYS BETWEEN 8:00 A.M. AND 6:30 P.M. UNLESS PRIOR APPROVAL IS RECEIVED FROM THE DGS.
- 3. THE LOCATIONS AND EXTENT OF EXISTING UNDERGROUND UTILITIES IN THE WORK AREA AS SHOWN ARE APPROXIMATE AND ARE NOT NECESSARILY COMPLETE. A REASONABLE EFFORT HAS BEEN MADE TO LOCATE AND DELINEATE EXISTING UTILITIES BASED UPON AVAILABLE RECORDS. THE CONTRACTOR SHALL DETERMINE THE TYPE, LOCATION, SIZE, AND/OR DEPTH OF THE EXISTING UTILITIES WITHIN THE WORK AREA BEFORE COMMENCING WORK. THE CONTRACTOR OR ANY SUBCONTRACTOR FOR THIS CONTRACT SHALL BE FULLY RESPONSIBLE FOR ANY AND ALL DAMAGES WHICH MIGHT BE OCCASIONED BY THE FAILURE TO EXACTLY LOCATE AND PRESERVE ANY AND ALL UNDERGROUND UTILITIES. THE CONTRACTOR SHALL CONTACT UNDERGROUND SERVICE ALERT AT (800) 227-2600 AT LEAST 48 HOURS PRIOR TO ANY CONSTRUCTION. SEE SPECIAL PROVISIONS FOR CONTRACTOR NOTIFICATION REQUIREMENTS. THE CONTRACTOR SHALL ASSUME COMPLETE RESPONSIBILITY FOR DAMAGED UTILITIES.
- 4. UNLESS NOTED OTHERWISE ON THE PLANS, THE CONTRACTOR SHALL BE RESPONSIBLE FOR THE PROTECTION OF ALL EXISTING SURVEY MONUMENTS AND OTHER SURVEY MARKERS DURING CONSTRUCTION.
- 5. THE CONTRACTOR SHALL PROVIDE, PLACE, AND MAINTAIN ALL LIGHTS, SIGNS, BARRICADES, FLAG PERSONS, PILOT CAR, OR OTHER DEVICES NECESSARY TO CONTROL TRAFFIC THROUGH THE CONSTRUCTION AREA AND FOR PUBLIC SAFETY IN ACCORDANCE WITH THESE PLANS, THE STANDARD SPECIFICATIONS, FEDERAL HIGHWAY ADMINISTRATION (FHWA) MANUAL ON UNIFORM TRAFFIC CONTROL DEVICES (MUTCD) 2009 EDITION AND MUTCD 2012 CALIFORNIA SUPPLEMENT.
- 6. THE CONTRACTOR AGREES TO ASSUME SOLE AND COMPLETE RESPONSIBILITY FOR JOB SITE CONDITIONS DURING THE COURSE OF CONSTRUCTION OF THIS PROJECT, INCLUDING SAFETY OF ALL PERSONS AND PROPERTY, AND FURTHER AGREES THAT THIS REQUIREMENT SHALL APPLY CONTINUOUSLY AND NOT BE LIMITED TO NORMAL WORKING HOURS IN ACCORDANCE WITH THE PROVISIONS OUTLINED BY THE PROJECT CONTRACT AND STANDARD SPECIFICATIONS.
- 7. THERE SHALL BE NO GRADING OR LAND DISTURBANCE PERFORMED WITH RESPECT TO THE PROJECT BETWEEN OCTOBER 15 AND MAY 1 UNLESS A GRADING EXEMPTION IS OBTAINED FROM THE TAHOE REGIONAL PLANNING AGENCY (TRPA). APPROVALS FOR GRADING BETWEEN OCTOBER 15 AND MAY 1 MUST ALSO BE OBTAINED FROM THE REGIONAL WATER QUALITY CONTROL BOARD, LAHONTAN. IF REQUIRED, THE COUNTY SHALL OBTAIN THESE APPROVALS.
- 8. THE CONTRACTOR SHALL MAINTAIN A SET OF PLANS ON THE JOB SHOWING "AS-CONSTRUCTED" CHANGES MADE TO DATE. UPON COMPLETION OF THE PROJECT, THE CONTRACTOR SHALL SUPPLY TO THE AGENCIES A SET OF PLANS, MARKED UP TO THE SATISFACTION OF THE AGENCIES, REFLECTING THE AS-CONSTRUCTED MODIFICATIONS.
- 9. ALL CONTROL STATIONING AND DATA DIMENSIONING ARE REFERENCED TO THE CENTERLINE OF THE FACILITY SHOWN UNLESS OTHERWISE NOTED.
- 10. AT NO TIME SHALL THE CONTRACTOR UNDERTAKE TO CLOSE OFF ANY EXISTING UTILITY LINES OR OPEN VALVES OR TAKE ANY OTHER ACTION WHICH WOULD AFFECT THE OPERATION OF EXISTING WATER OR SEWER SYSTEMS WITHOUT PRIOR APPROVAL FROM THE SOUTH TAHOE PUBLIC UTILITY DISTRICT (STPUD). APPROVAL SHALL BE REQUESTED AT LEAST 48 HOURS IN ADVANCE OF THE TIME THAT THE INTERRUPTION OF THE EXISTING SYSTEM IS REQUIRED. ANY INTERRUPTION OF SERVICE TO ACTIVE WATER OR SEWER SERVICES, INCLUDING FIRE HYDRANTS, WHETHER INTENTIONAL OR NOT, MUST BE KEPT TO A MINIMUM TIME PERIOD. IF SERVICE TO BUILDINGS IS TO BE OFF FOR MORE THAN FOUR HOURS, THE CONTRACTOR MUST ADVISE STPUD.
- 11. THE CONTRACTOR SHALL BE REQUIRED TO PERFORM PREVENTIVE DUST CONTROL MEASURES TO ENSURE THAT DUST RESULTING FROM THE CONTRACTOR'S PERFORMANCE OF THE WORK IS CONTROLLED IN CONFORMANCE WITH THE SPECIAL PROVISIONS, THE PROVISIONS THE STANDARD SPECIFICATIONS, COUNTY, AND LOCAL ORDINANCES. SEE SPECIAL PROVISIONS REGARDING SWEEPING, DUST CONTROL AND TRACKING REQUIREMENTS.
- 12. THE CONTRACTOR SHALL BE RESPONSIBLE FOR IMPLEMENTING ALL TEMPORARY EROSION CONTROL MEASURES. THE EROSION CONTROL MEASURES SHALL BE IN ACCORDANCE WITH THE TRPA "HANDBOOK OF BEST MANAGEMENT PRACTICES" AND THE STORM WATER POLLUTION PREVENTION PLAN (SWPPP). THE DOT SHALL CONTACT TRPA PRIOR TO THE COMMENCEMENT OF WORK FOR A PRE-GRADING INSPECTION OF THE INSTALLED TEMPORARY EROSION CONTROL FACILITIES. THE CONTRACTOR SHALL BE RESPONSIBLE FOR THE MAINTENANCE AND PERFORMANCE OF THE TEMPORARY EROSION CONTROL MEASURES THROUGHOUT THE DURATION OF THE PROJECT. SEE SPECIAL PROVISIONS REGARDING TEMPORARY EROSION CONTROL FACILITY REMOVAL.
- 13. CONSTRUCTION LIMITS SHOWN ON THE PLANS DELINEATE BOUNDARIES FOR THE CONTRACTOR'S OPERATIONS OUTSIDE THE COUNTY STREET RIGHT-OF-WAY. CONSTRUCTION LIMIT FENCING SHALL BE ERRECTED ALONG THESE BOUNDARIES PRIOR TO COMMENCEMENT OF CONSTRUCTION. WITHIN THE CONSTRUCTION LIMITS, EXISTING VEGETATION SHALL BE PROTECTED TO THE EXTENT FEASIBLE. ALL EXISTING TREES SHALL BE PROTECTED UNLESS SHOWN ON THE PLANS TO BE REMOVED. SEE SPECIAL PROVISIONS REGARDING PAYMENT FOR TREE REMOVAL.
- 14. ALL REVEGETATION SHOWN ON THE PLANS IS TO BE COMPLETED BY OTHERS, UNLESS NOTED OTHERWISE.
- 15. THE CONTRACTOR SHALL USE ONLY DESIGNATED SPECIFIC SITES FOR STORAGE OF EQUIPMENT AND MATERIALS AS SHOWN ON THESE PLANS. THE CONTRACTOR SHALL BE RESPONSIBLE FOR THE SECURITY OF ALL EQUIPMENT AND MATERIALS.

- 17. ELEVATIONS SHOWN ON THE PLANS FOR PIPE INVERTS, TOPS OF GRATES, RIMS, CURBS, ETC., ARE BASED UPON THE TOPOGRAPHIC INFORMATION SHOWN ON THE PLANS. THE CONTRACTOR SHALL VERIFY ALL NECESSARY SURFACE ELEVATIONS IN THE FIELD AND NOTIFY THE DGS OF ANY DISCREPANCIES, WHICH MIGHT AFFECT PROPER OPERATION OF THE NEW FACILITIES BEFORE BREAKING GROUND AND PRIOR TO FACILITY INSTALLATION. THE DOT SHALL BE CONTACTED IN THE EVENT ELEVATIONS ARE INCORRECT SO THAT THE PROPER ADJUSTMENTS CAN BE MADE PRIOR TO THE INSTALLATION OF THE FACILITIES, AS SET FORTH IN THE SPECIAL PROVISIONS.
- 18. THE CONTRACTOR SHALL OBTAIN AT HIS OWN EXPENSE ALL PERMITS, LICENSES, INSURANCE POLICIES, ETC., NOT ALREADY OBTAINED BY DGS, AS MAY BE NECESSARY TO COMPLY WITH STATE AND LOCAL LAWS ASSOCIATED WITH THE PERFORMANCE OF THE WORK. SEE SPECIAL PROVISIONS.
- 19. THE CONTRACTOR IS RESPONSIBLE TO REVIEW THE CONTRACT DOCUMENTS FOR ALL SUBMITTALS REQUIRED FOR DGS REVIEW AND ACCEPTANCE.
- 20. THE DGS WILL FURNISH THE CONSTRUCTION STAKING TO THE CONTRACTOR AS SET FORTH IN THE SPECIAL PROVISIONS.
- 21. CONTRACTOR SHALL NOTE THAT THE PLANS SHOW BOTH HORIZONTAL AND SLOPE (ACTUAL) LENGTHS FOR PIPE. SEE SPECIAL PROVISIONS FOR THE MAXIMUM ALLOWABLE DEFLECTION ANGLE AT EACH PIPE JOINT.
- 22. THE CONSULTANT TEAM AND OVERSEEING ENGINEER RESPONSIBLE FOR PREPARATION OF THESE PLANS AND SPECIFICATIONS WILL NOT BE RESPONSIBLE FOR, OR LIABLE FOR UNAUTHORIZED CHANGES TO OR USES OF THESE PLANS. ALL CHANGES TO THE PLANS MUST BE IN WRITING AND MUST BE APPROVED BY THE CONSULTANT TEAM AND OVERSEEING ENGINEER RESPONSIBLE FOR PREPARATION OF THESE PLANS.
- 23. NO TREES OR WETLAND VEGETATION SHALL BE REMOVED UNLESS THEY ARE SHOWN AND NOTED TO BE REMOVED ON THE PLANS, OR AS DIRECTLY SPECIFIED ON-SITE BY THE PROJECT MANAGEMENT STAFF. ALL TREES CONFLICTING WITH GRADING SHALL BE TRIMMED. NO GRADING SHALL TAKE PLACE WITHIN THE DRIP LINE OF TREES NOT TO BE REMOVED UNLESS OTHERWISE APPROVED.
- 24. IF, DURING CONSTRUCTION, ARCHAEOLOGICAL REMAINS ARE ENCOUNTERED, CONSTRUCTION IN THE VICINITY SHALL BE HALTED, AND THE STATE OFFICE OF HISTORIC PRESERVATION AND A QUALIFIED ARCHEOLOGIST SHALL BE NOTIFIED IMMEDIATELY.
- 25. PERMIT CONDITIONS MAY CONTAIN SPECIFIC REQUIREMENTS FOR THE CONTROL OF OFF-SITE TURBIDITY FROM PROJECT OPERATIONS. TURBIDITY WILL BE MONITORED ON A FREQUENT BASIS BY THE PROJECT MANAGEMENT AND INSPECTION STAFF ON-SITE. TURBIDITY AMOUNTS IN EXCESS OF THE PERMITTED AMOUNT AND/OR DURATIONS WILL CAUSE WORK TO BE STOPPED UNTIL IMPROVED PRACTICES ARE IN EFFECT AND THE PROBLEMS CONTROLLED. THE CONTRACTOR IS COMPLETELY RESPONSIBLE FOR ANY PROJECT DELAYS THAT OCCUR BY NATURE OF THIS FAILURE TO ADEQUATELY CONTAIN SEDIMENT ON-SITE
- 26. THE NEW CHANNEL ALIGNMENTS OF EACH ALTERNATIVE DEPICTED ON THE PLANS ARE APPROXIMATE AND ARE NOT INTENDED TO REPRESENT THE FINAL ALIGNMENT.

ABBREVIATIONS

A	ASPEN	FL	FLOWLINE
ABAND	ABANDONED	FS	FINISH SURFACE
AC	ASPHALT CONCRETE	G	GAS
APN	ASSESSOR'S PARCEL NUMBER	IE	INVERT ELEVATION
BLVD	BOULEVARD	INST	INSTALL
CA	CALIFORNIA	IB	ISOLATION BARRIER
CALC'S	CALCULATIONS	LF	LINEAR FEET
CF	CUBIC FEET OR CURB FACE	LT	LEFT
CIR	CIRCLE	LT BLVD	LAKE TAHOE BLVD
CL	CENTERLINE	MISC	MISCELLANEOUS
CLF	CONSTRUCTION LIMIT FENCE	N	NORTH
CLR	CLEAR	NTS	NOT TO SCALE
CO.	COUNTY	OH	OVERHEAD
CONC	CONCRETE	P	PINE
CONST	CONSTRUCT	PL	PROPERTY LINE
CMP	CORRUGATED METAL PIPE	PP	POWER/UTILITY POLE
CT	CALTRANS OR COURT	PROP	PROPOSED
CTC	CALIFORNIA TAHOE CONSERVANCY	PUE	PUBLIC UTILITY EASEMENT
CY	CUBIC YARD	RD	ROAD
DET	DETAIL	REF	REFERENCE
DGS	DEPARTMENT OF GENERAL SERVICES	ROW	RIGHT-OF-WAY
DI	DRAINAGE INLET	RSP	ROCK SLOPE PROTECTION
DIA OR Ø	DIAMETER	RT	RIGHT
DISS	DISSIPATER	S	SOUTH OR SANITARY SEWER
DR	DRIVE	SD	STORM DRAIN
D/W	DRIVEWAY	SDMH	STORM DRAIN MANHOLE
E	EAST	SF	SQUARE FEET
EA	EACH	SHT	SHEET
EG	EXISTING GRADE	SS	SANITARY SEWER
ELEV	ELEVATION	ST	SEDIMENT TRAP OR STREET
ELEC	ELECTRIC	STA	STATION
EP	EDGE OF PAVEMENT	STPUD	SOUTH TAHOE PUBLIC UTILITY DISTRICT
EX	EXISTING	TRPA	TAHOE REGIONAL PLANNING AGENCY
F	FIR	TYP	TYPICAL
FES	FLARED END SECTION	USFS	UNITED STATES FOREST SERVICE
FF	FILTER FENCE	W	WEST OR WATER
FG	FINISHED GRADE	W/	WITH
FH	FIRE HYDRANT	W/O	WITHOUT

UTILITIES

CABLE TELEVISION	CHARTER COMMUNICATIONS, (775) 850-1290
NATURAL GAS	SOUTHWEST GAS CO., (775) 887-2872
ELECTRIC	LIBERTY ENERGY, (530) 541-2040
SEWER & WATER	SOUTH TAHOE PUD, (530) 543-5247
TELEPHONE	AT&T, (916) 453-6136
STORM DRAIN	CITY OF SOUTH LAKE TAHOE, DPW (530) 542-6030

HORIZONTAL AND VERTICAL CONTROL/PROJECTION

VERTICAL CONTROL IS NGVD 29; HORIZONTAL CONTROL IS CALIFORNIA STATE PLANE, ZONE 2, NAD 83 (FEET);

LEGEND

*NOTE: LEGEND PROVIDED ON SHEET SUPERCEDES THIS LEGEND

EXISTING 	PROPOSED
---------------------	---------------------



UPPER TRUCKEE RIVER AND MARSH RESTORATION PROJECT

E.I.P. # 560



870 Emerald Bay Road, Suite 400
 South Lake Tahoe, CA 96150
 Tel: 530.543.5100 Fax: 530.543.5150



295 Highway 50, suite 1
 Zephyr Cove, NV 89448
 Tel: 775.588.9069

GENERAL NOTES, ABBREVIATIONS, & LEGEND

ii

REVISIONS		
#	description	date

scale:	AS SHOWN
job no.:	00110066.04
drawn by:	MC
checked by:	CM

sheet no.: ii

sheet 2 of 45
 date: 01/10/13

SCHEMATIC DESIGN PLANS & DETAILS NOT FOR CONSTRUCTION

Legend

- Existing 1000 ft. River Station
- Existing 100 ft. River Station - Upper Truckee
- Existing 100 ft. River Station - Trout Creek
- ▬ Existing Regional Bike Trail

Proposed Habitat Features (See Sheet L-12)

- Core Habitat Area
- ▨ Lagoon
- Restored Meadow
- Restored Dune
- ▭ Tahoe Yellow Cross Restricted Use Area

Proposed River and Floodplain Features

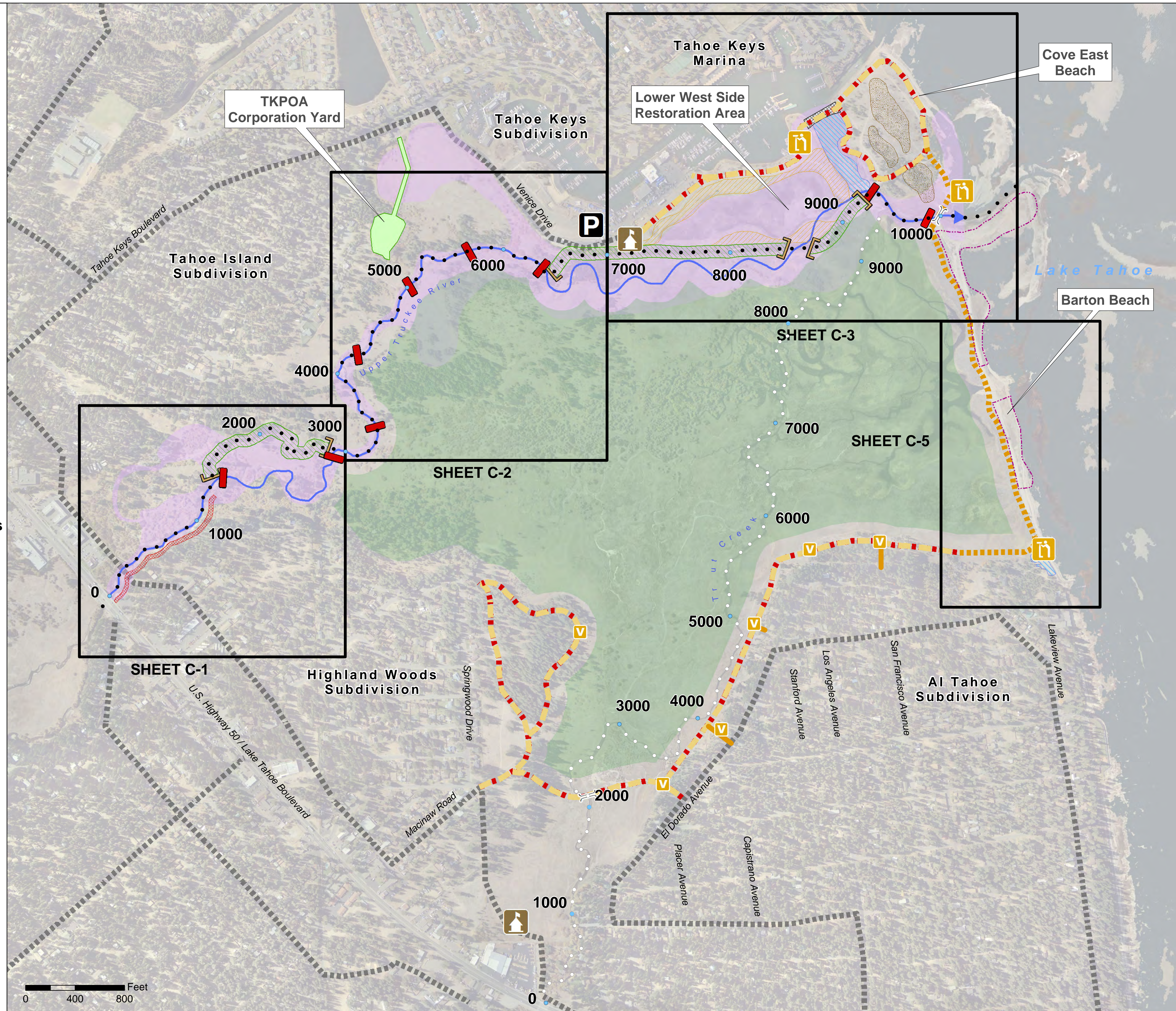
- ▬ Low and Bankful Flow Channel
- ▨ Partial Fill of Existing Channel
- ▨ Removal of Reserve Fill
- ▨ Active Floodplain

Proposed Engineered Features

- ▭ Lateral Grade Control
- Vertical Grade Control
- ▨ Bank Protection
- ▨ Bulkhead/Levee

Proposed Public Access Features

- Observation Area $\frac{3}{L-7}$ or $\frac{2}{L-6}$
- Viewpoint $\frac{3}{L-3}$
- Kiosk $\frac{3}{L-10}$
- Parking
- ▬ Bike Path $\frac{3}{L-1}$
- ▬ Pedestrian Trail $\frac{3}{L-2}$
- ▬ Bridge $\frac{1}{L-4}$
- ▬ Boardwalk $\frac{1}{L-5}$ or $\frac{2}{L-5}$



UPPER TRUCKEE RIVER AND MARSH RESTORATION PROJECT

E.I.P. #560



870 Emerald Bay Road, Suite 400
South Lake Tahoe, CA 96150
Tel: 530.543.5100 Fax: 530.543.5150



295 Highway 50, Suite 1, P.O. Box 1533
Zephyr Cove, NV 89448
Phone (775) 588-9069 Fax (775) 588-9219

ALTERNATIVE 1
CHANNEL AGGRADATION AND NARROWING
MAXIMUM RECREATION INFRASTRUCTURE

S-1

REVISIONS	
#	description

scale : As Noted
job no. : 00110066.04
drawn by : EL
checked by : CM

sheet no. : S-1

sheet 4 of 45
date : 11/07/12

