



San Joaquin Scour Hole

Overview

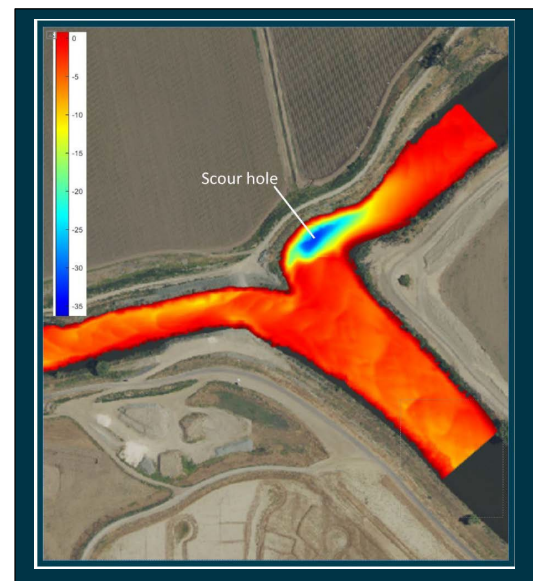
A scour hole has been identified in an area where unusually high predation of juvenile salmonids may occur. It is located west of Lathrop and Manteca on the San Joaquin River just north of the junction with the Old River. Predatory fish use the depth of the scour hole to hide and ambush the juvenile salmonids, including endangered steel head smolts.

Background

Old River is a channel that leads to the Central Valley Project and State Water Project pumping facilities. At the head of Old River, a seasonal rock barrier is sometimes constructed to minimize the migration of juvenile salmonids into the Old River route and to increase flows in the San Joaquin River. Juvenile salmonids not entering Old River, either because of natural route selection or because of the presence of the rock barrier, must pass through the scour hole area.



Above map shows the location of the scour hole. The other image on right illustrates the bathymetry of the scour hole.



Purpose

Purpose Consistent with the 2019 Reinitiation of Consultation on the Long Term Operations Biological Opinion, Reclamation has formed a project team to develop and evaluate options to reduce the predation intensity on juvenile salmonids at the Head of Old River Scour Hole in the timeliest manner. Further objectives include multiple benefits, including improved riparian habitat for multiple species of animals and plants. This is a three-year project, concluding in late 2025. In 2023, a working group will provide input on initial concepts. A set of alternatives will be evaluated in an Environmental Impact Statement, which is anticipated to be released in 2025.