

Northern CVP Water Temperature Report

March - 2022

Page	Description
2	- Mean Daily Water Temperature, Release Flow Rates and Air Temperatures with Monthly Averages
3	- Redding 10-Day Forecasted Air Temperatures
4	- Sacramento River Mean Daily Water Temperature, Air Temperature and 10-Day Forecasted Air Temperature Plot - Water Temperature Measuring Station Details - Temperature Control Point Details
5	- Shasta Lake Isothermobaths & Cold Water Pool Statistics
14	- Trinity Lake Isothermobaths & Cold Water Pool Statistics
23	- Whiskeytown Lake Isothermobaths & Cold Water Pool Statistics
x	- TCD Configuration (External Link)



— BUREAU OF —
RECLAMATION

All Data in this Report is Preliminary and Subject to Change

DATE	Mean Daily Water Temperatures (°F)													Mean Daily Release (CFS)			Mean Daily Air Temperatures (°F)			
	TCD ¹	SHD	SPP ¹	KWK	SAC ²	CCR	BSF	BND	RDB	IGO	LWS	DGC	NFH	Shasta Generation	Spring Creek P.P.	Keswick Total	RDD	BSF	RDB	
Feb	48.8	48.2	-	48.5	48.6	48.8	49.0	49.2	49.6	46.9	45.9	42.9	43.4	2914	56	3282	53.9	49.7	52.9	
03/01	49.0	48.5 #	-	49.0	49.3	49.8	50.7	51.7	52.0	48.5	46.4	47.4	48.7	2796	47	3262	58.0	54.4	57.1	
03/02	49.0	48.5 #	-	49.1	49.4	49.9	50.8	52.1	52.7	48.3	46.5	47.2	48.6	2732	109	3260	57.0	53.3	56.5	
03/03	49.1	48.6 #	-	49.3	49.4	49.6	50.7	51.8	52.4	48.1	46.5	47.1	48.5	2889	75	3243	56.5	53.2	53.1	
03/04	49.2	48.8 #	-	49.3	49.5	50.0	50.7	51.5	51.9	48.2	46.7	46.9	48.0	2903	74	3244	55.0	53.5	54.3	
03/05	49.4	48.6 #	-	49.2	49.2	49.3	50.2	51.3	51.9	47.8	46.6	45.2	46.5	3151	75	3240	51.0	48.5	49.0	
03/06	49.4	48.8 #	-	49.2	49.3	49.6	49.8	50.3	51.1	47.5	46.9	44.4	45.9	2847	75	3241	49.5	48.2	51.0	
03/07	49.2	48.8 #	-	49.2	49.4	49.9	50.3	50.7	51.0	47.5	47.2	45.3	45.7	2696	75	3245	56.0	54.1	55.3	
03/08	49.6	48.9 #	-	49.4	49.6	50.1	50.7	51.3	51.5	47.8	47.4	45.8 ?	46.4	2837	75	3237	55.5	53.2	57.7	
03/09	49.7	48.9 #	-	49.5 ?	50.1	50.6	51.4	52.3	52.5	48.3	47.6	46.6	47.5	2921	74	3237	60.0	57.8	59.1	
03/10	50.1	49.3 #	-	49.6 !	-	50.0	50.8	51.5	52.2	47.9	47.7	46.7	47.7	3100	74	3244	54.5	53.8	54.1	
03/11	49.5	49.1 #	-	49.7 ?	50.0	50.4	50.7	51.1	51.7	47.9	47.9	46.3	47.3	2952	74	3242	52.5	49.0	52.2	
03/12	49.4	48.8 #	-	49.7	49.9	50.3	51.0	51.6	51.9	47.9	48.0	47.0	47.1	2903	74	3245	52.0	52.1	54.3	
03/13	49.0	48.2 #	-	49.9	50.1	50.7	51.7	52.5	52.7	48.7	48.4	48.1	48.7	3249	74	3240	54.0	56.1	55.5	
03/14	49.4	48.5 #	-	50.0	50.4	51.0	52.1	53.3	53.9	49.0	48.6	48.8	49.8	3137	74	3233	56.5	55.4	57.2	
03/15	49.2	48.6 #	-	49.6 ?	50.1	50.8	52.4	54.0	54.2	49.2	48.8	50.3	51.2	3126	74	3221	57.0	55.9	56.3	
03/16	49.8	49.2 #	-	49.6	50.0	50.8	52.2	53.4	54.3	49.3	48.8	49.3	50.3	2905	74	3224	59.5	54.5	57.1	
03/17	50.3	49.4 #	-	49.7	50.1	50.8	52.5	53.7	54.4	49.2	48.8	49.5	50.1	2929	79	3230	58.0	53.9	55.1	
03/18	50.4	49.5 #	-	49.9	50.2	50.9	52.4	53.6	54.4	49.3	49.0	49.4	50.4	3035	73	3217	57.0	54.8	57.8	
03/19	49.8	49.3 #	-	50.1	50.3	51.0	52.7	54.0	54.4	49.2	49.1	50.2	51.0	3561	73	3221	54.0	54.2	55.8	
03/20	50.2	49.6	49.2	50.4	50.6	51.0	51.9	52.8	53.7	48.9	49.1	48.1	49.5	2232	73	3252	56.5	52.6	54.3	
03/21	51.1	50.0	49.3	50.5	51.0	52.0	53.2	54.0	54.2	49.9	49.6	49.7	50.3	2880	62	3263	67.0	61.5	63.8	
03/22	51.3	50.3	49.0	50.9	51.5	52.7	54.9	56.5	56.7	50.8	49.9	52.1	52.7	2994	49	3261	74.0	70.4	69.0	
03/23	50.7	50.2	49.2	51.1	51.8	53.0	55.6	57.7	58.5	50.9	49.9	53.2 ?	53.9	2888	75	3264	67.5	64.8	66.3	
03/24	50.5	50.2	49.2	51.6	52.0	53.0	55.5	57.9	59.0	50.6	50.0	52.4	53.2	2850	86	3256	67.5	64.4	67.1	
03/25	50.7	49.6	49.4	51.7	52.3	53.5	55.8	57.7	58.8	50.9	50.5	53.3	54.0	3079	74	3260	65.5	62.3	64.3	
03/26	51.1	49.7	49.4	51.7	52.3	53.3	55.6	57.7	58.8	50.5	50.5	52.6	54.2	2908	75	3259	63.5	60.6	63.3	
03/27	50.2	49.7	49.4	51.3	51.9	52.8	55.2	57.2	58.3	50.4	50.6	51.8	53.1	2524	75	3259	61.5	59.0	60.3	
03/28	50.5	49.7	49.3	51.4	51.7	52.5	54.4	56.2	57.4	50.1	50.7	52.3	53.2	3379	75	3252	57.5	56.4	56.5	
03/29	50.5 !	-	49.4	51.5	52.2	53.2	54.8	56.0	56.7	50.6	50.6	52.7	54.1	2687	74	3258	62.0	59.6	60.4	
03/30	50.6	49.7	49.4	51.3	51.9	53.0	55.3	57.3	57.8	50.5	50.3	53.4	54.2	3579	75	3252	60.5	57.4	56.9	
03/31	51.5	50.1	49.3	51.6	52.0	52.8	54.6	56.3	57.5	50.4	50.0	52.5	53.8	3110	75	3259	63.5	59.0	60.3	
Mar	50.0	49.2	49.3	50.2	50.6	51.2	52.6	53.8	54.5	49.2	48.7	49.2	50.2	2961	74	3246	58.7	56.2	57.8	
														Total CFS	91779	2290	100621			
														Total AF	182040	4542	199578			

Legend

Notes

- ? = 1-9 hours of data missing (Average includes estimations)
- ! = 10 or more hours of data missing (Average not calculated)
- # = Station out of service
- ↑ = Record high air temperature
- ↓ = Record low air temperature
- = Monthly Averages

- ¹ Temperatures are weighted averages based on individual penstock flow and temperature
- Highlighted cells in the TCD column indicate a TCD change was made on that day
- ² Current Sacramento River control point (see page 4 for more details)

D A T E	Redding (RDD) Daily Air Temperatures (°F)																																			
	Actual			Forecasted																																
	Previous Day			Current Day			1 Day			2 Days			3 Days			4 Days			5 Days			6 Days			7 Days			8 Days			9 Days			10 Days		
	↓	↑	Avg	↓	↑	Avg	↓	↑	Avg	↓	↑	Avg	↓	↑	Avg	↓	↑	Avg	↓	↑	Avg	↓	↑	Avg	↓	↑	Avg	↓	↑	Avg	↓	↑	Avg	↓	↑	Avg
03/01	38	73	55.5	45	73	59.0	45	69	57.0	44	60	52.0	35	62	48.5	34	60	47.0	32	63	47.5	34	68	51.0	41	69	55.0	43	62	52.5	38	65	51.5	41	62	51.5
03/02	44	72	58.0	43	74	58.5	45	66	55.5	43	59	51.0	37	60	48.5	33	65	49.0	36	69	52.5	37	70	53.5	46	72	59.0	40	71	55.5	41	73	57.0	47	72	59.5
03/03	43	71	57.0	52	67	59.5	45	61	53.0	34	60	47.0	32	64	48.0	35	71	53.0	34	70	52.0	38	68	53.0	45	70	57.5	38	73	55.5	43	70	56.5	44	73	58.5
03/04	51	62	56.5	51	58	54.5	35	63	49.0	33	66	49.5	36	69	52.5	36	74	55.0	36	71	53.5	36	72	54.0	47	76	61.5	46	68	57.0	46	68	57.0	46	68	57.0
03/05	46	64	55.0	40	64	52.0	33	67	50.0	35	71	53.0	38	76	57.0	38	69	53.5	35	69	52.0	35	73	54.0	45	74	59.5	47	70	58.5	46	72	59.0	43	74	58.5
03/06	39	63	51.0	34	66	50.0	37	71	54.0	38	75	56.5	37	70	53.5	35	69	52.0	35	74	54.5	40	68	54.0	43	65	54.0	39	66	52.5	43	65	54.0	43	67	55.0
03/07	33	66	49.5	42	71	56.5	38	73	55.5	37	67	52.0	34	67	50.5	33	72	52.5	36	69	52.5	40	69	54.5	49	64	56.5	44	65	54.5	45	71	58.0	48	71	59.5
03/08	41	71	56.0	38	73	55.5	38	68	53.0	34	66	50.0	34	74	54.0	36	70	53.0	40	68	54.0	41	69	55.0	48	65	56.5	45	69	57.0	43	70	56.5	42	70	56.0
03/09	36	75	55.5	50	70	60.0	38	67	52.5	34	73	53.5	36	71	53.5	40	70	55.0	43	67	55.0	45	66	55.5	45	70	57.5	41	72	56.5	43	68	55.5	41	69	55.0
03/10	47	73	60.0	47	68	57.5	33	73	53.0	36	69	52.5	39	67	53.0	43	69	56.0	47	68	57.5	40	74	57.0	45	72	58.5	44	71	57.5	43	69	56.0	45	63	54.0
03/11	40	69	54.5	33	72	52.5	35	69	52.0	41	66	53.5	41	68	54.5	47	66	56.5	39	72	55.5	40	72	56.0	48	70	59.0	46	62	54.0	41	66	53.5	40	72	56.0
03/12	32	73	52.5	35	69	52.0	39	64	51.5	41	65	53.0	47	66	56.5	39	72	55.5	42	71	56.5	42	71	56.5	46	63	54.5	43	62	52.5	45	68	56.5	44	74	59.0
03/13	33	71	52.0	45	64	54.5	40	66	53.0	47	65	56.0	39	72	55.5	42	72	57.0	41	74	57.5	46	64	55.0	47	67	57.0	46	80	63.0	52	79	65.5	51	77	64.0
03/14	43	65	54.0	45	69	57.0	47	66	56.5	39	73	56.0	41	74	57.5	41	72	56.5	46	61	53.5	36	65	50.5	51	66	58.5	48	79	63.5	49	78	63.5	47	78	62.5
03/15	43	70	56.5	53	67	60.0	39	73	56.0	43	71	57.0	40	72	56.0	45	60	52.5	34	64	49.0	36	72	54.0	51	77	64.0	54	81	67.5	51	79	65.0	49	78	63.5
03/16	50	64	57.0	46	73	59.5	43	68	55.5	40	72	56.0	45	58	51.5	36	68	52.0	41	78	59.5	50	86	68.0	54	83	68.5	54	83	68.5	51	80	65.5	49	78	63.5
03/17	44	75	59.5	47	70	58.5	38	72	55.0	44	60	52.0	35	67	51.0	41	79	60.0	51	88	69.5	49	87	68.0	51	82	66.5	51	75	63.0	48	70	59.0	48	66	57.0
03/18	45	71	58.0	43	72	57.5	46	58	52.0	34	67	50.5	41	77	59.0	51	86	68.5	51	86	68.5	49	83	66.0	53	79	66.0	46	65	55.5	49	67	58.0	43	74	58.5
03/19	41	73	57.0	53	59	56.0	36	67	51.5	40	79	59.5	51	87	69.0	58	89	73.5	57	85	71.0	55	78	66.5	50	77	63.5	43	69	56.0	50	71	60.5	47	69	58.0
03/20	46	62	54.0	44	68	56.0	42	79	60.5	53	87	70.0	58	86	72.0	54	84	69.0	52	83	67.5	51	79	65.0	45	63	54.0	50	59	54.5	45	66	55.5	43	69	56.0
03/21	43	70	56.5	54	78	66.0	56	88	72.0	58	89	73.5	55	84	69.5	52	86	69.0	54	78	66.0	47	65	56.0	48	76	62.0	47	77	62.0	48	76	62.0	48	75	61.5
03/22	53	81	67.0	64	89	76.5	58	86	72.0	55	84	69.5	52	82	67.0	54	78	66.0	47	68	57.5	44	71	57.5	49	77	63.0	50	77	63.5	49	75	62.0	48	76	62.0
03/23	60	88	74.0	53	84	68.5	49	84	66.5	48	81	64.5	46	81	63.5	48	73	60.5	47	70	58.5	45	79	62.0	46	77	61.5	51	78	64.5	50	79	64.5	48	77	62.5
03/24	51	84	67.5	53	83	68.0	50	81	65.5	48	80	64.0	48	70	59.0	47	69	58.0	45	79	62.0	44	76	60.0	51	78	64.5	49	81	65.0	49	78	63.5	47	71	59.0
03/25	51	84	67.5	49	81	65.0	47	81	64.0	49	70	59.5	48	68	58.0	44	79	61.5	45	77	61.0	46	75	60.5	47	80	63.5	52	80	66.0	51	77	64.0	47	75	61.0
03/26	49	82	65.5	46	80	63.0	47	71	59.0	47	65	56.0	43	76	59.5	45	73	59.0	45	76	60.5	45	78	61.5	47	80	63.5	49	75	62.0	48	75	61.5	46	76	61.0
03/27	46	81	63.5	50	70	60.0	48	63	55.5	42	76	59.0	45	73	59.0	45	76	60.5	47	80	63.5	44	80	62.0	48	77	62.5	47	78	62.5	49	76	62.5	48	75	61.5
03/28	48	75	61.5	53	63	58.0	43	75	59.0	46	73	59.5	44	76	60.0	45	81	63.0	45	81	63.0	46	74	60.0	49	77	63.0	51	79	65.0	50	78	64.0	47	81	64.0
03/29	52	63	57.5	48	76	62.0	46	71	58.5	44	76	60.0	45	81	63.0	45	79	62.0	45	73	59.0	42	76	59.0	43	77	60.0	49	75	62.0	44	77	60.5	45	81	63.0
03/30	46	78	62.0	52	71	61.5	46	76	61.0	46	82	64.0	44	80	62.0	46	76	61.0	44	75	59.5	45	79	62.0	48	83	65.5	50	80	65.0	50	78	64.0	49	74	61.5
03/31	51	70	60.5	51	76	63.5	45	82	63.5	45	80	62.5	45	75	60.0	44	69	56.5	45	78	61.5	48	87	67.5	51	87	69.0	52	85	68.5	49	82	65.5	45	74	59.5

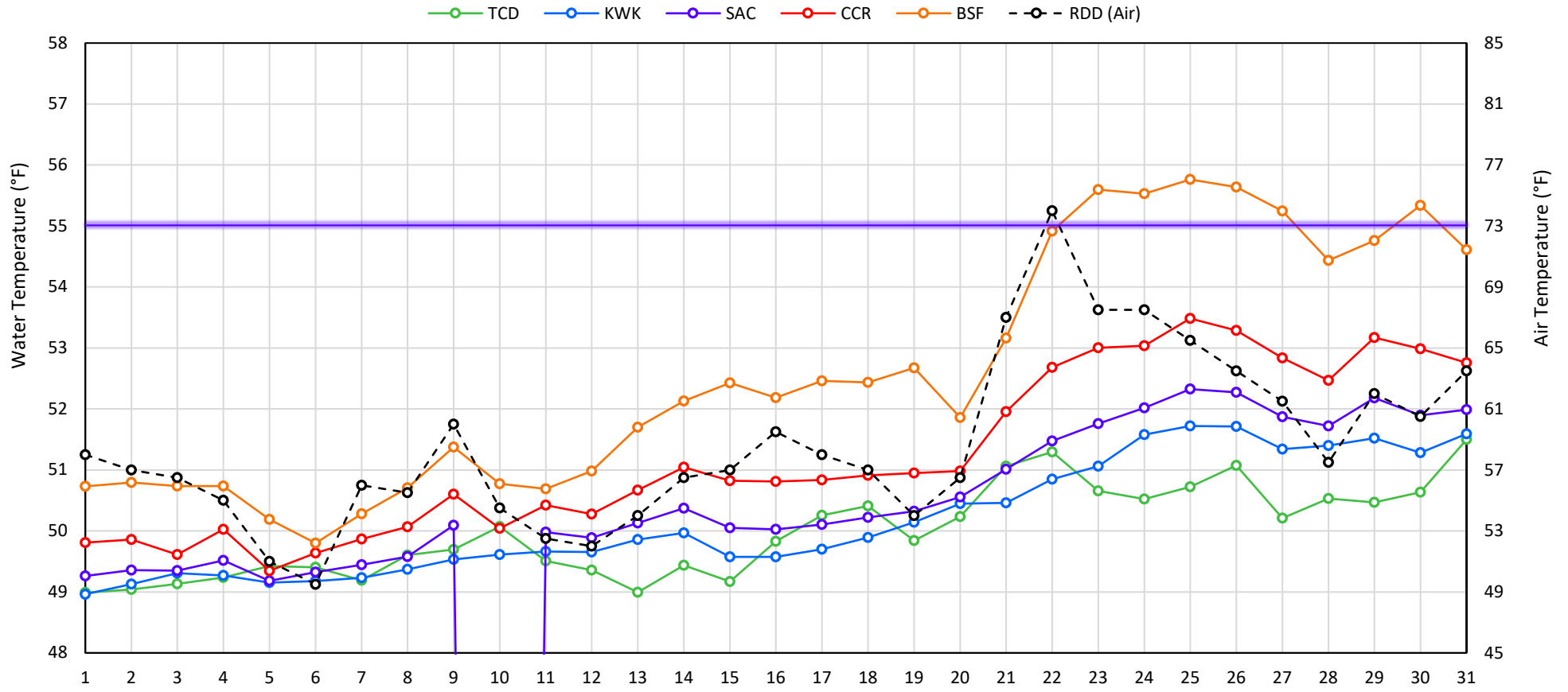
Web Links

- [10-Day Min/Max Forecast](#)
- [Previous Days Min/Max Actuals](#)

Legend

- NR = Forecasted temperatures not recorded
- 100** = Previous day actual temperatures in red and bolded indicate a record temperature for that date

Mean Daily Temperatures



Station Details

Code	Body of Water	Location ¹	CDEC Link
TCD	N/A	Shasta Power Plant	N/A
SHD	Sacramento River	0.3 miles downstream of Shasta Power Plant	Click Here
SPP	N/A	Spring Creek Power Plant	N/A
KWK	Sacramento River	0.8 miles downstream of Keswick Dam	Click Here
SAC	Sacramento River	4.8 miles downstream of Keswick Dam	Click Here
CCR	Sacramento River	9.7 miles downstream of Keswick Dam	Click Here
BSF	Sacramento River	25 miles downstream of Keswick Dam	Click Here
JLF	Sacramento River	34 miles downstream of Keswick Dam	Click Here
BND	Sacramento River	41 miles downstream of Keswick Dam	Click Here
RDB	Sacramento River	58 miles downstream of Keswick Dam	Click Here
IGO	Clear Creek	7.3 miles downstream of Whiskeytown Dam	Click Here
LWS	Trinity River	1.1 miles downstream of Lewiston Dam	Click Here
DGC	Trinity River	19 miles downstream of Lewiston Dam	Click Here
NFH	Trinity River	38 miles downstream of Lewiston Dam	Click Here

Water Right Temperature Control Points

River	Point	Temp. (°F)	Begin Date	End Date
Sacramento	CCR	56	09/21/2020	04/18/2021
Sacramento	CCR	60	04/18/2021	05/17/2021
Sacramento	SAC	57	05/17/2021	06/15/2021
Sacramento	SAC	55	06/15/2021	TBD
Trinity	DGC	56	09/15/2021	10/01/2021
Trinity	NFH	56	10/01/2021	12/31/2021

Notes

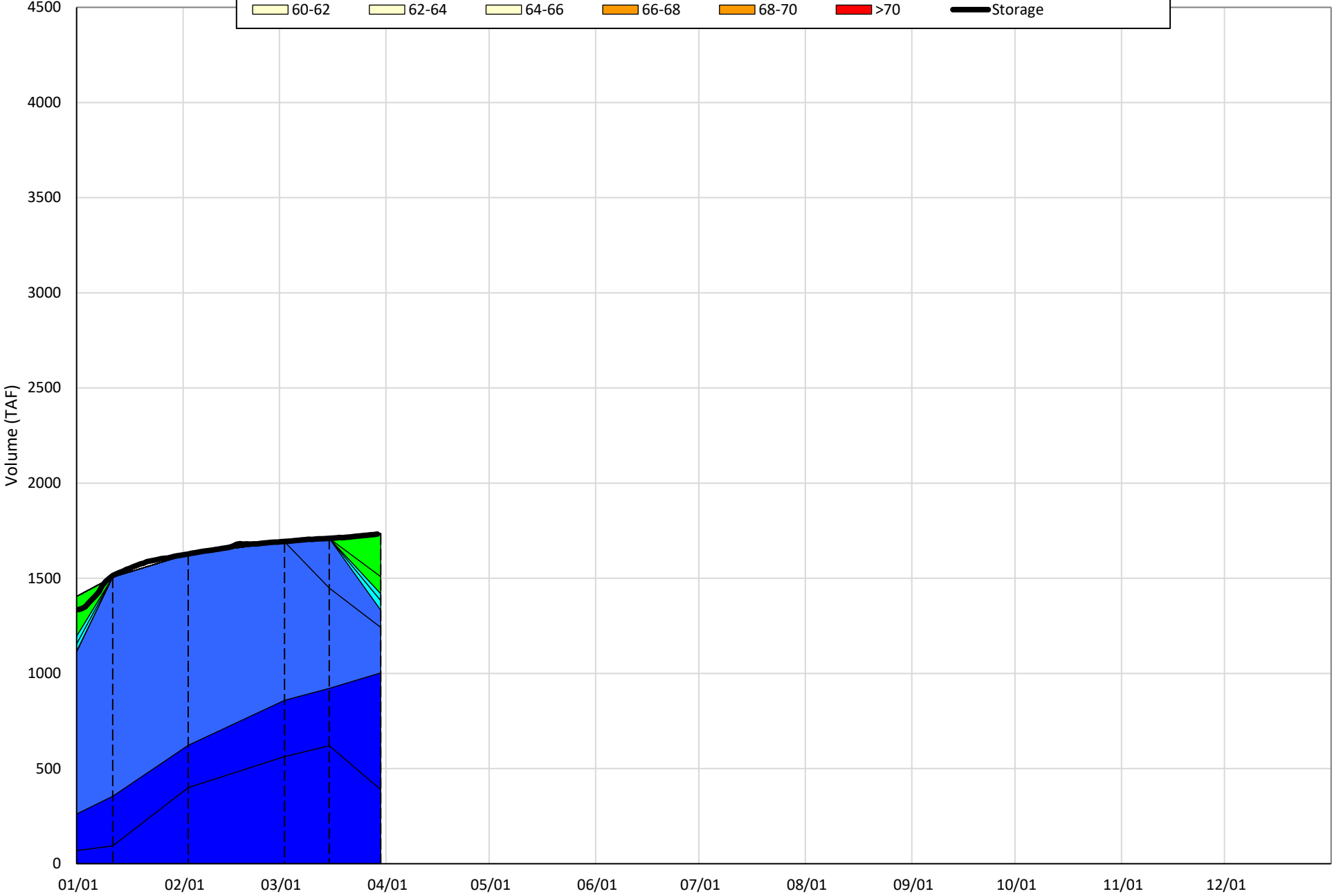
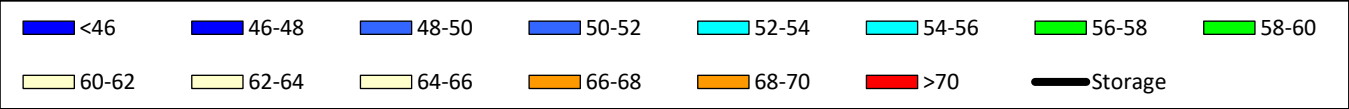
¹ Distances are approximate

Shasta Lake Isothermobaths & Cold Water Pool Statistics

2022

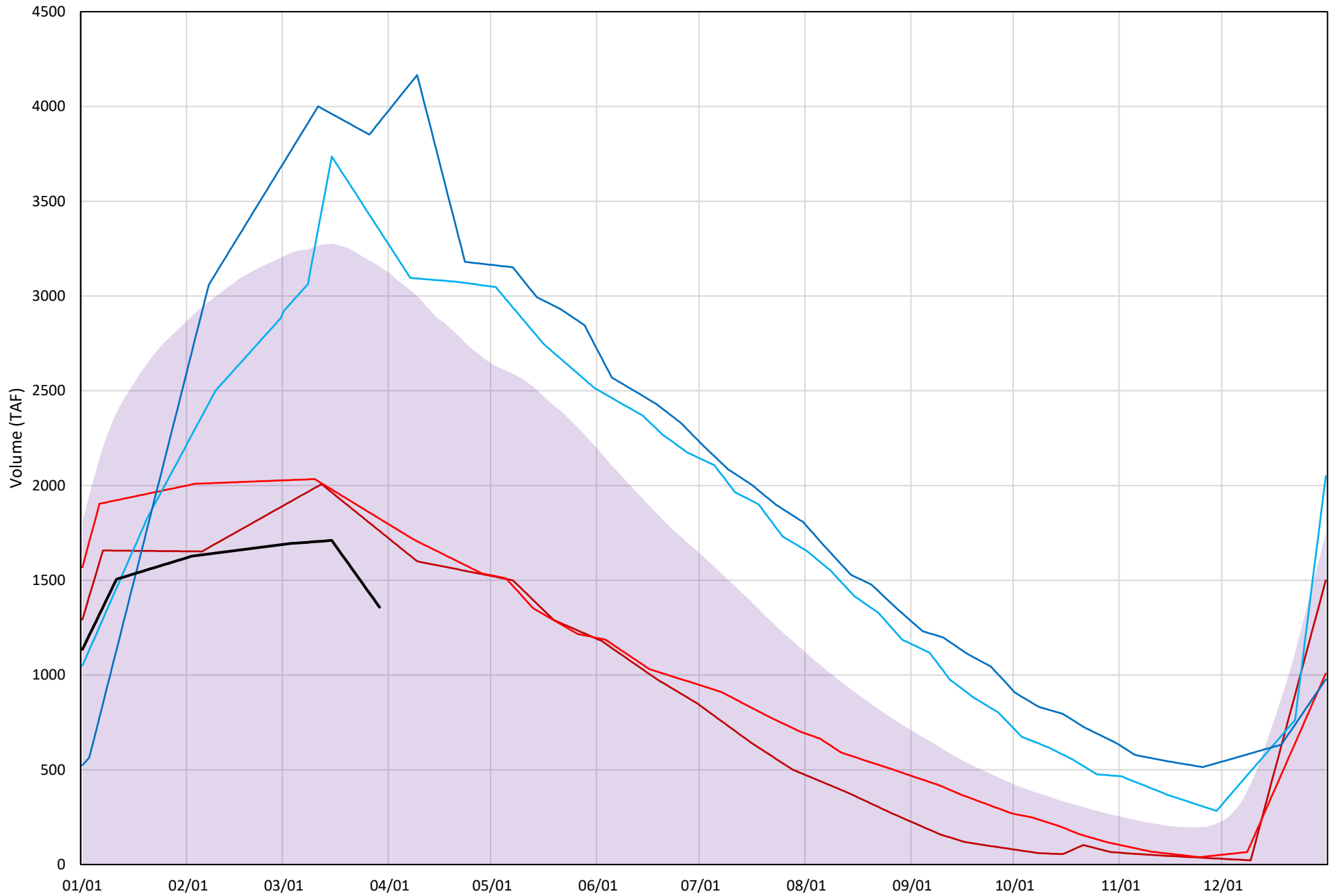
Page	Description
6	- Shasta Lake Isothermobaths Plot
7	- Shasta Lake Cold Water Pool Volume $\leq 52^{\circ}\text{F}$
8	- Shasta Lake Cold Water Pool Volume $\leq 50^{\circ}\text{F}$
9	- Shasta Lake Cold Water Pool Volume $\leq 48^{\circ}\text{F}$
10	- Shasta Lake Cold Water Pool Volume $\leq 52^{\circ}\text{F}$ - Percent Exceedances
11	- Shasta Lake Cold Water Pool Volume $\leq 50^{\circ}\text{F}$ - Percent Exceedances
12	- Shasta Lake Cold Water Pool Volume $\leq 48^{\circ}\text{F}$ - Percent Exceedances
13	- Shasta Lake Cold Water Pool Comparison by Year

Shasta Lake Isothermobaths Plot - 2022



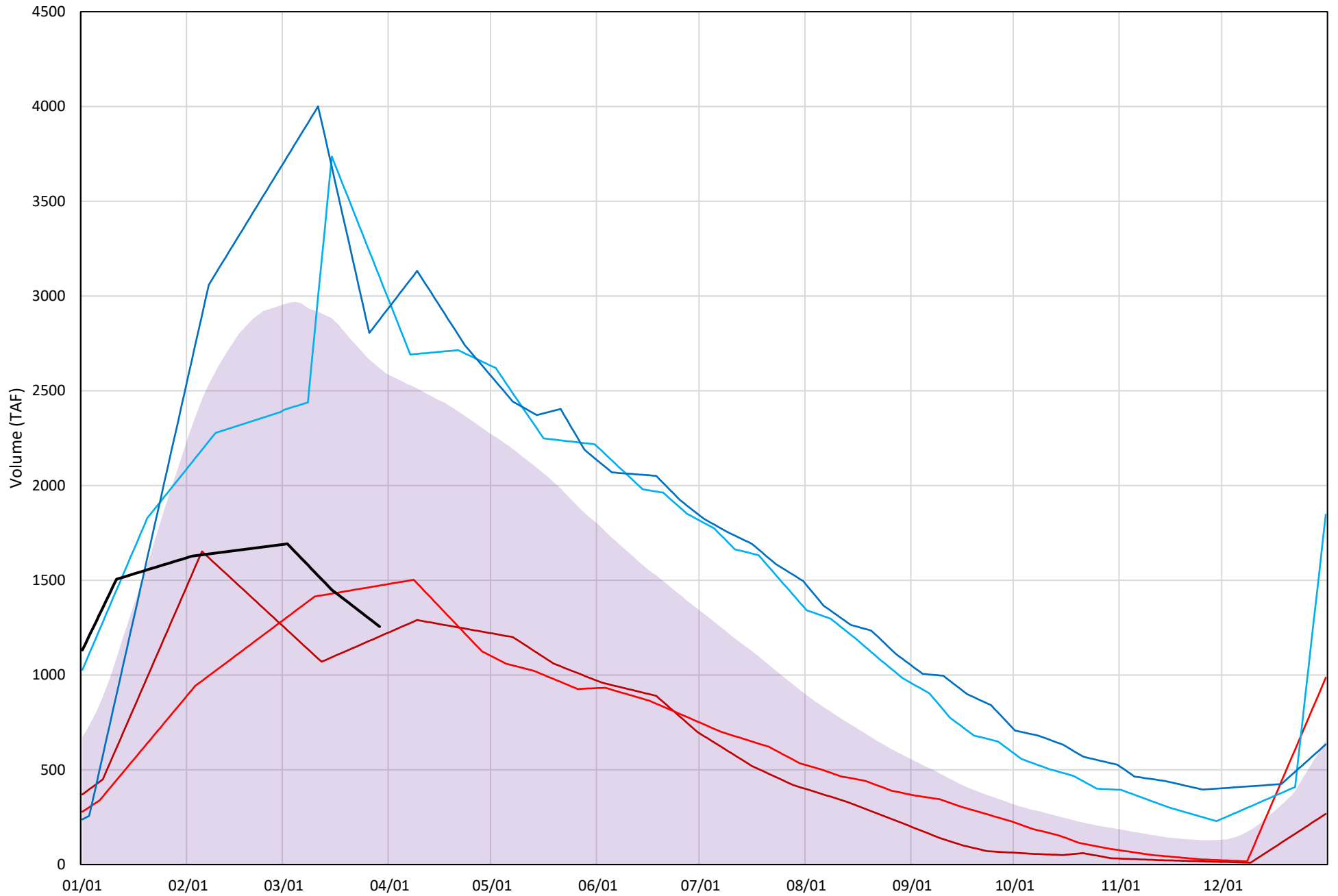
Shasta Lake Cold Water Pool Volume $\leq 52^{\circ}\text{F}$

Avg (1998-2021) 2014 2015 2016 2019 2022



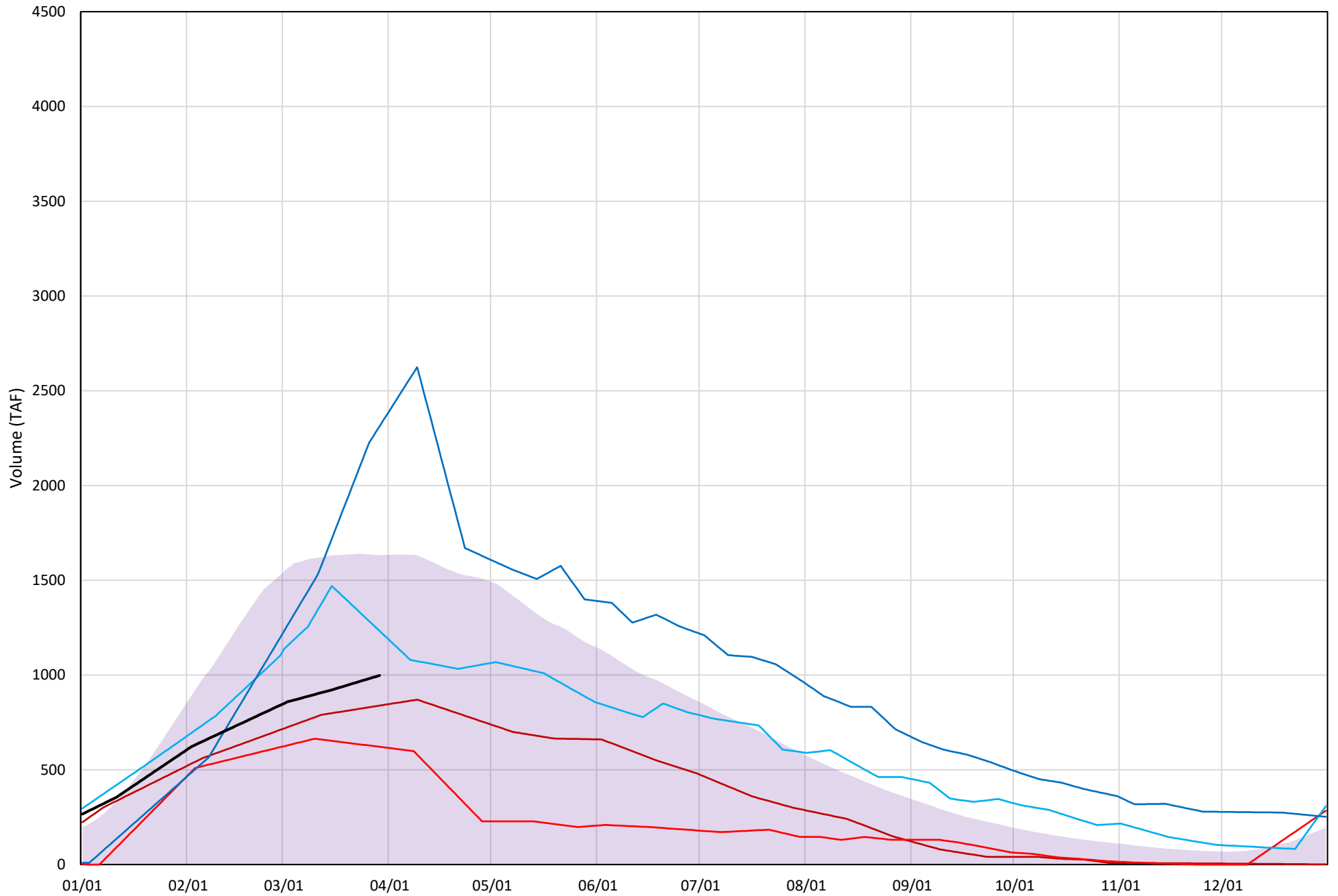
Shasta Lake Cold Water Pool Volume $\leq 50^{\circ}\text{F}$

Avg (1998-2021) 2014 2015 2016 2019 2022



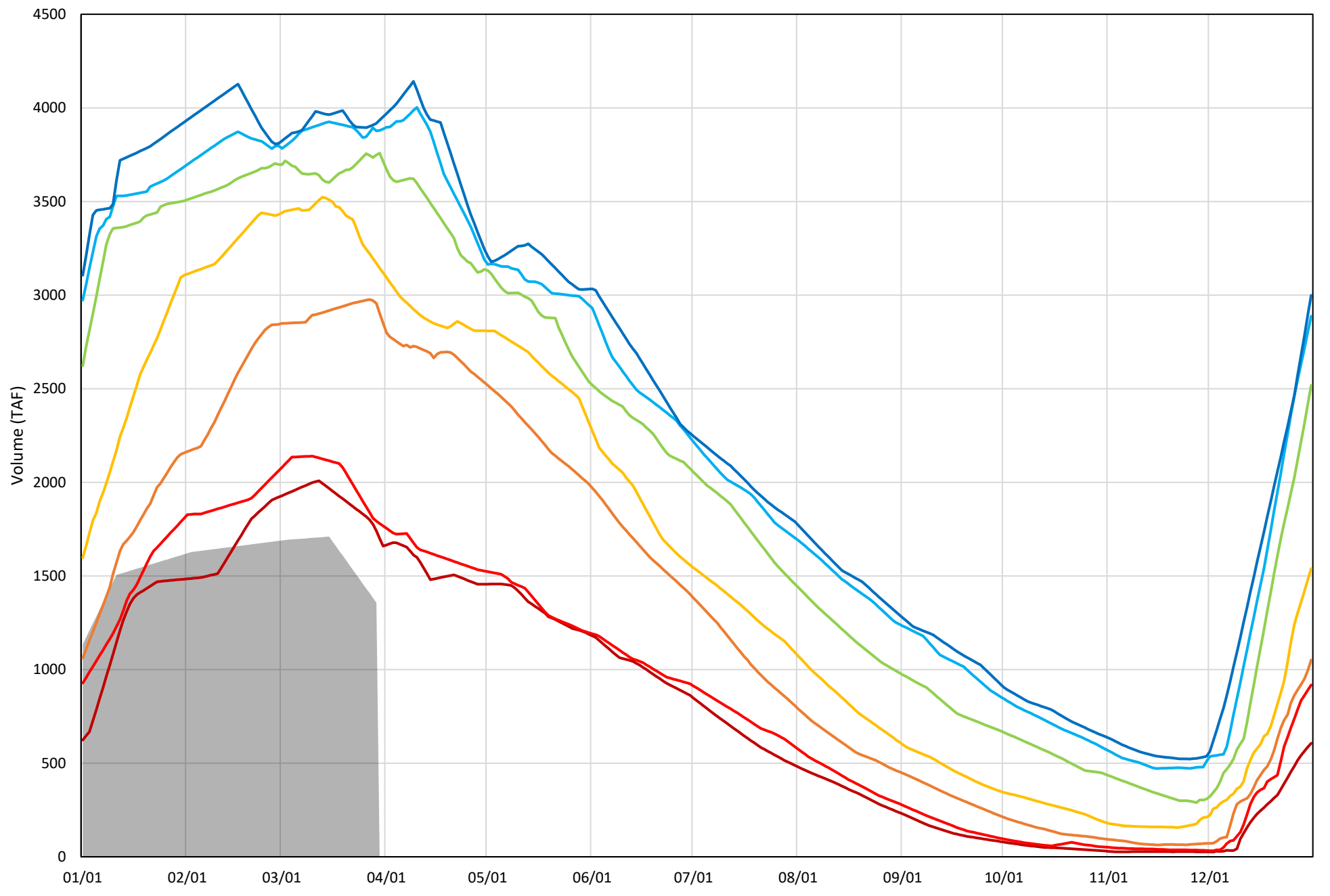
Shasta Lake Cold Water Pool Volume $\leq 48^{\circ}\text{F}$

Avg (1998-2021) 2014 2015 2016 2019 2022



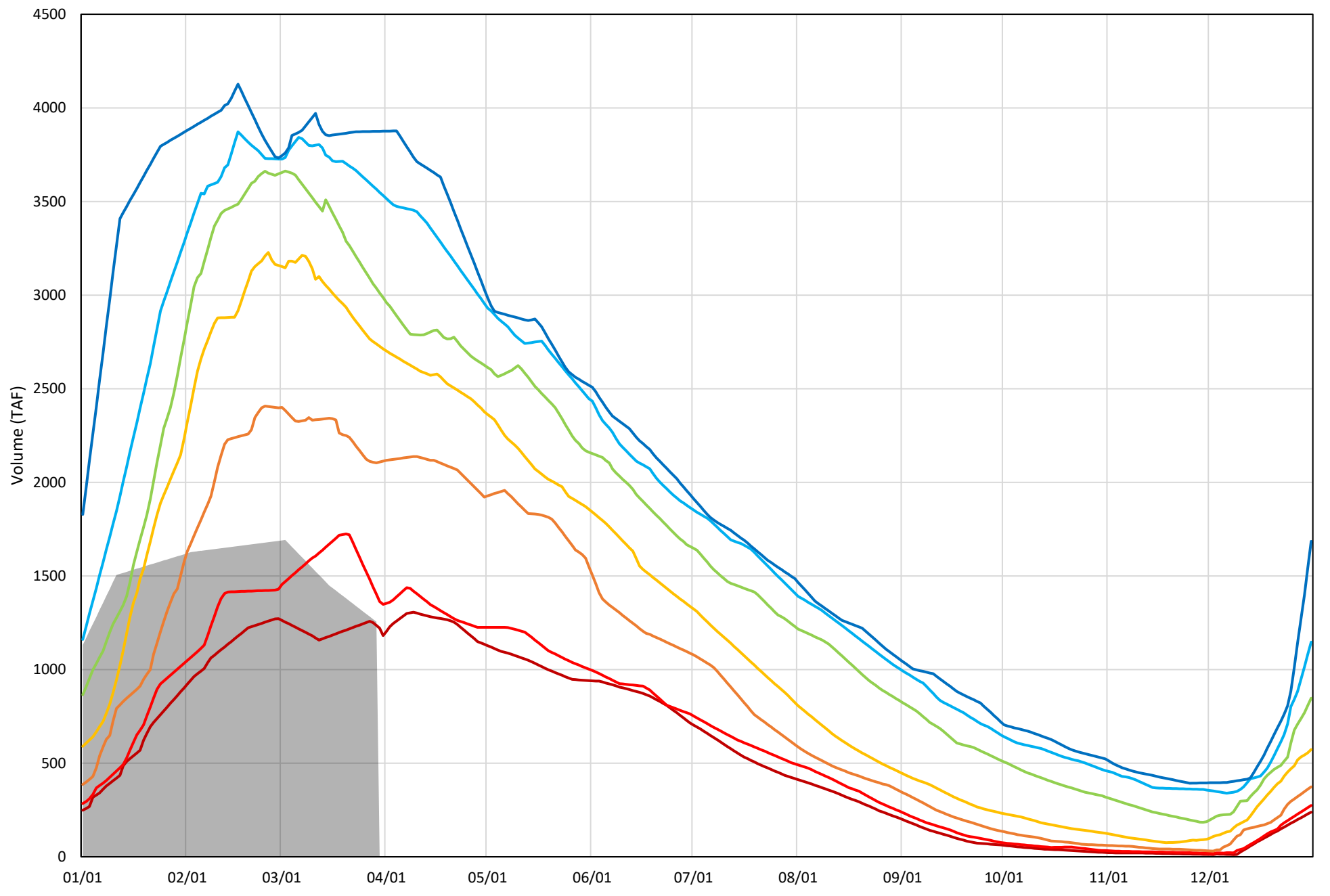
Shasta Lake Cold Water Pool Volume $\leq 52^{\circ}\text{F}$ - Percent Exceedances (1998-2021)

2022 95 90 75 50 25 10 5



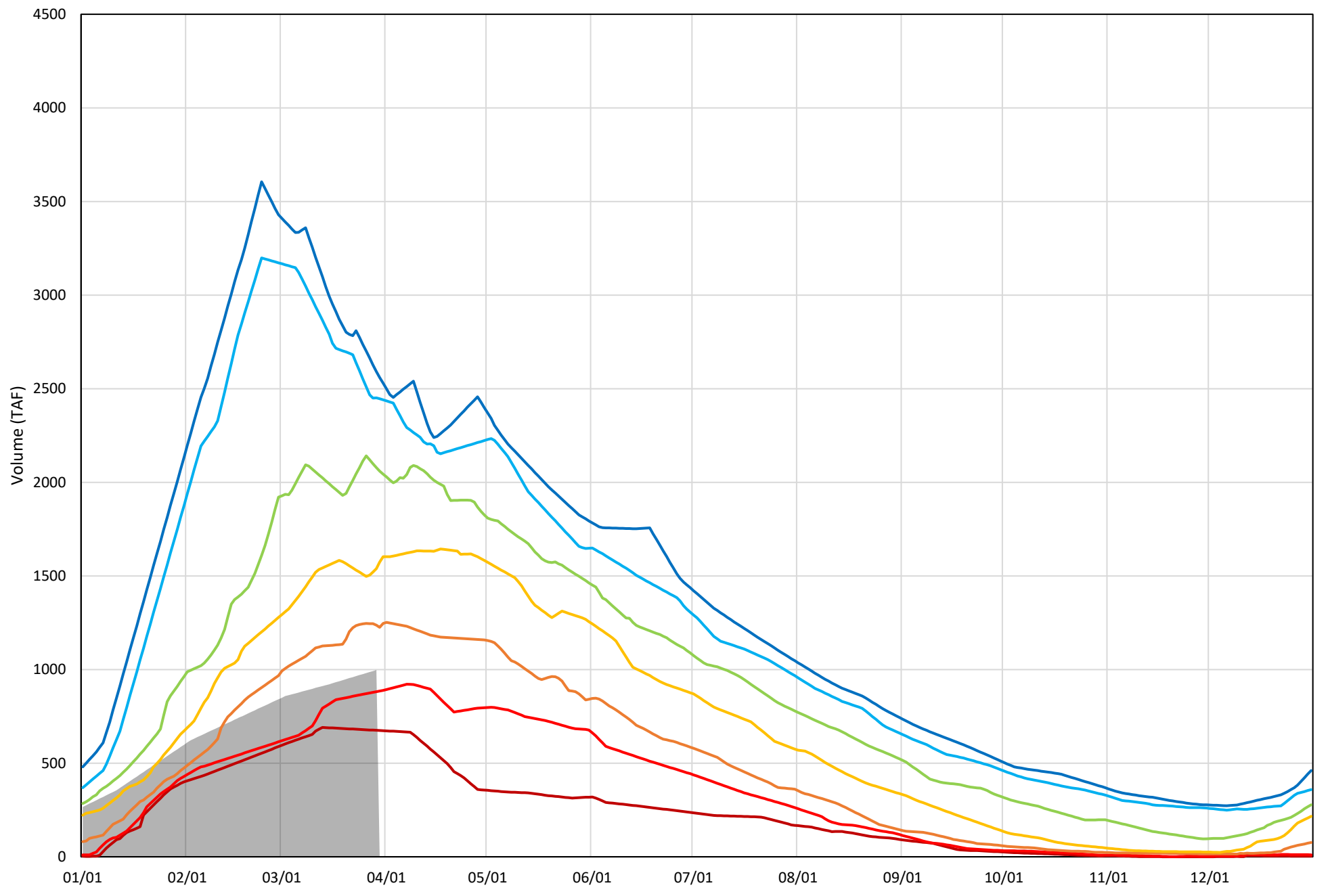
Shasta Lake Cold Water Pool Volume $\leq 50^{\circ}\text{F}$ - Percent Exceedances (1998-2021)

2022 95 90 75 50 25 10 5



Shasta Lake Cold Water Pool Volume $\leq 48^{\circ}\text{F}$ - Percent Exceedances (1998-2021)

2022 95 90 75 50 25 10 5



Shasta Lake Cold Water Pool Comparison by Year (for Specified Date)

Mar-30 2022	Δ TAF				% Δ			
	≤52°	≤50°	≤48°	Abs. Avg.	≤52°	≤50°	≤48°	Abs. Avg.
1998	2140	1729	602	1490	158	138	60	119
1999	2244	1984	1592	1940	165	158	160	161
2000	1744	1380	251	1125	129	110	25	88
2001	1692	1501	1240	1478	125	120	124	123
2002	2339	2117	879	1779	172	169	88	143
2003	1714	1165	457	1112	126	93	46	88
2004	1826	1798	338	1321	135	143	34	104
2005	1372	1029	269	890	101	82	27	70
2006	2465	2502	1594	2187	182	199	160	180
2007	1798	1709	893	1467	132	136	89	119
2008	1605	720	475	933	118	57	48	74
2009	908	786	734	809	67	63	74	68
2010	2470	1551	906	1642	182	124	91	132
2011	2556	2658	1138	2118	188	212	114	171
2012	2408	1601	480	1496	177	128	48	118
2013	1772	1467	900	1380	131	117	90	113
2014	402	-52	-159	204	30	-4	-16	17
2015	467	217	-377	353	34	17	-38	30
2016	1989	1844	235	1356	146	147	24	106
2017	2482	1454	1236	1724	183	116	124	141
2018	1596	1081	190	956	118	86	19	74
2019	2561	1620	1315	1832	189	129	132	150
2020	2234	788	131	1051	165	63	13	80
2021	376	78	-73	176	28	6	-7	14
2022	0	0	0	0	0	0	0	0

Historic - Current

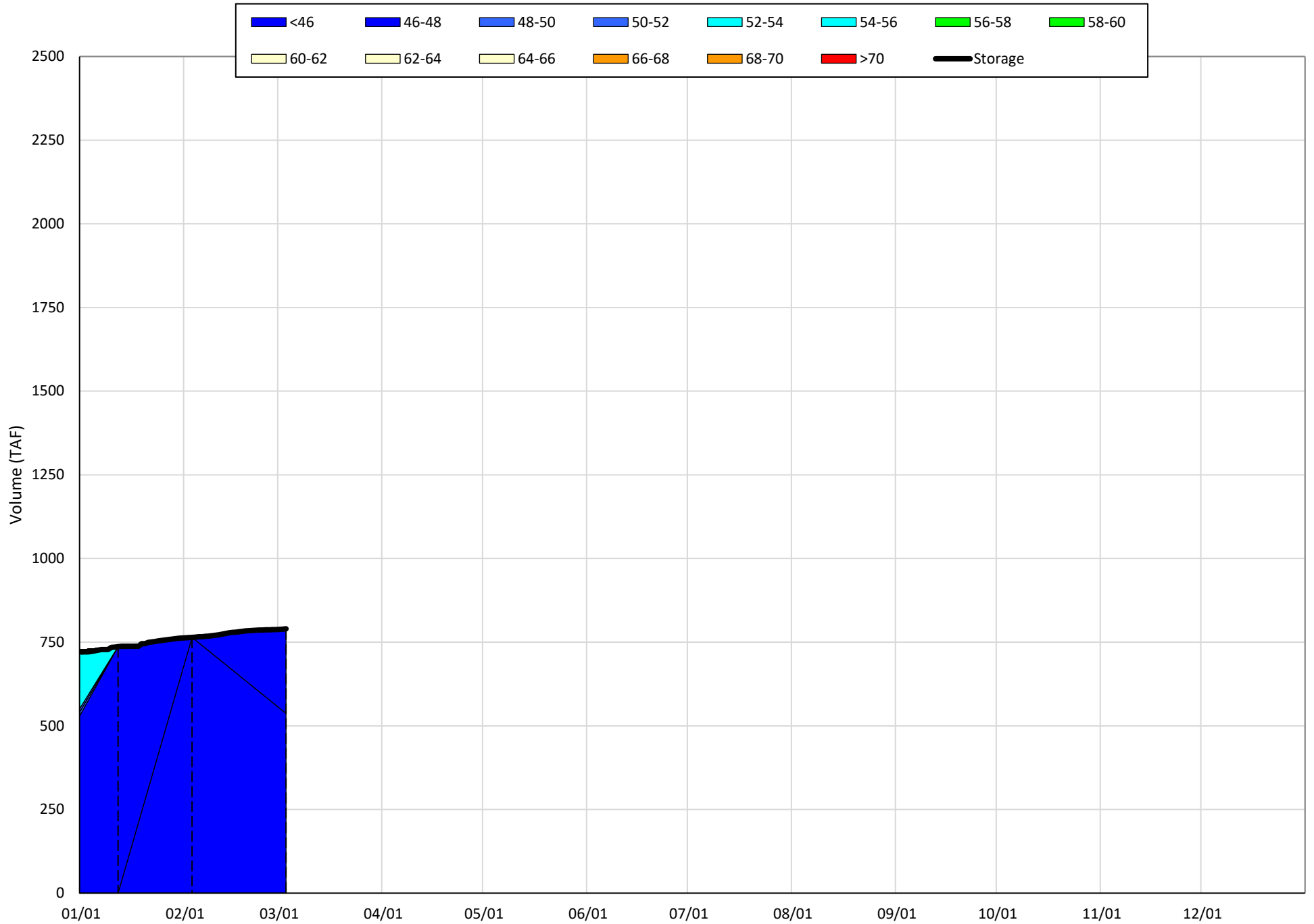
(Historic - Current) / Current

Trinity Lake Isothermobaths & Cold Water Pool Statistics

2022

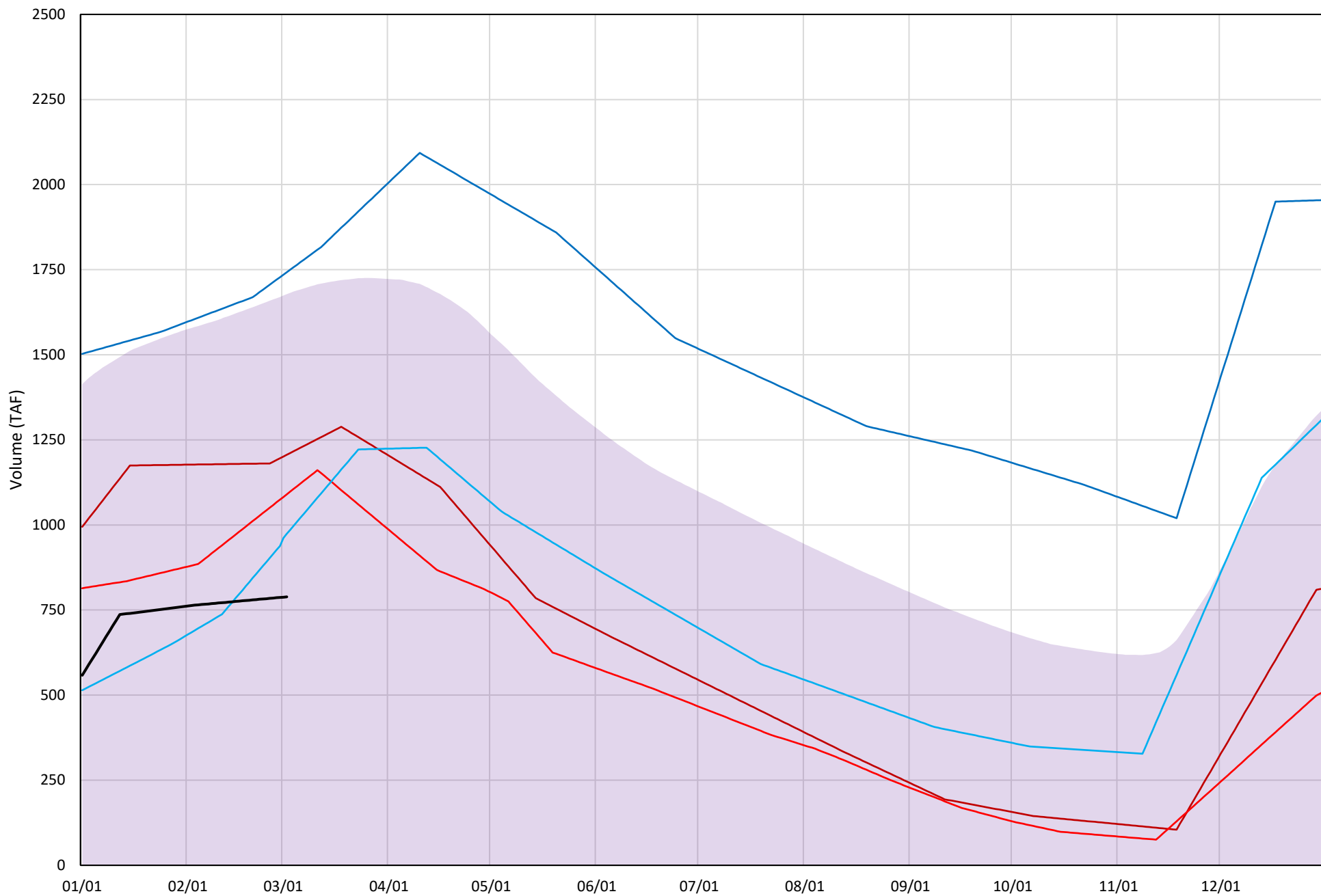
Page	Description
15	- Trinity Lake Isothermobaths Plot
16	- Trinity Lake Cold Water Pool Volume $\leq 52^{\circ}\text{F}$
17	- Trinity Lake Cold Water Pool Volume $\leq 50^{\circ}\text{F}$
18	- Trinity Lake Cold Water Pool Volume $\leq 48^{\circ}\text{F}$
19	- Trinity Lake Cold Water Pool Volume $\leq 52^{\circ}\text{F}$ - Percent Exceedances
20	- Trinity Lake Cold Water Pool Volume $\leq 50^{\circ}\text{F}$ - Percent Exceedances
21	- Trinity Lake Cold Water Pool Volume $\leq 48^{\circ}\text{F}$ - Percent Exceedances
22	- Trinity Lake Cold Water Pool Comparison by Year

Trinity Lake Isothermobaths Plot - 2022



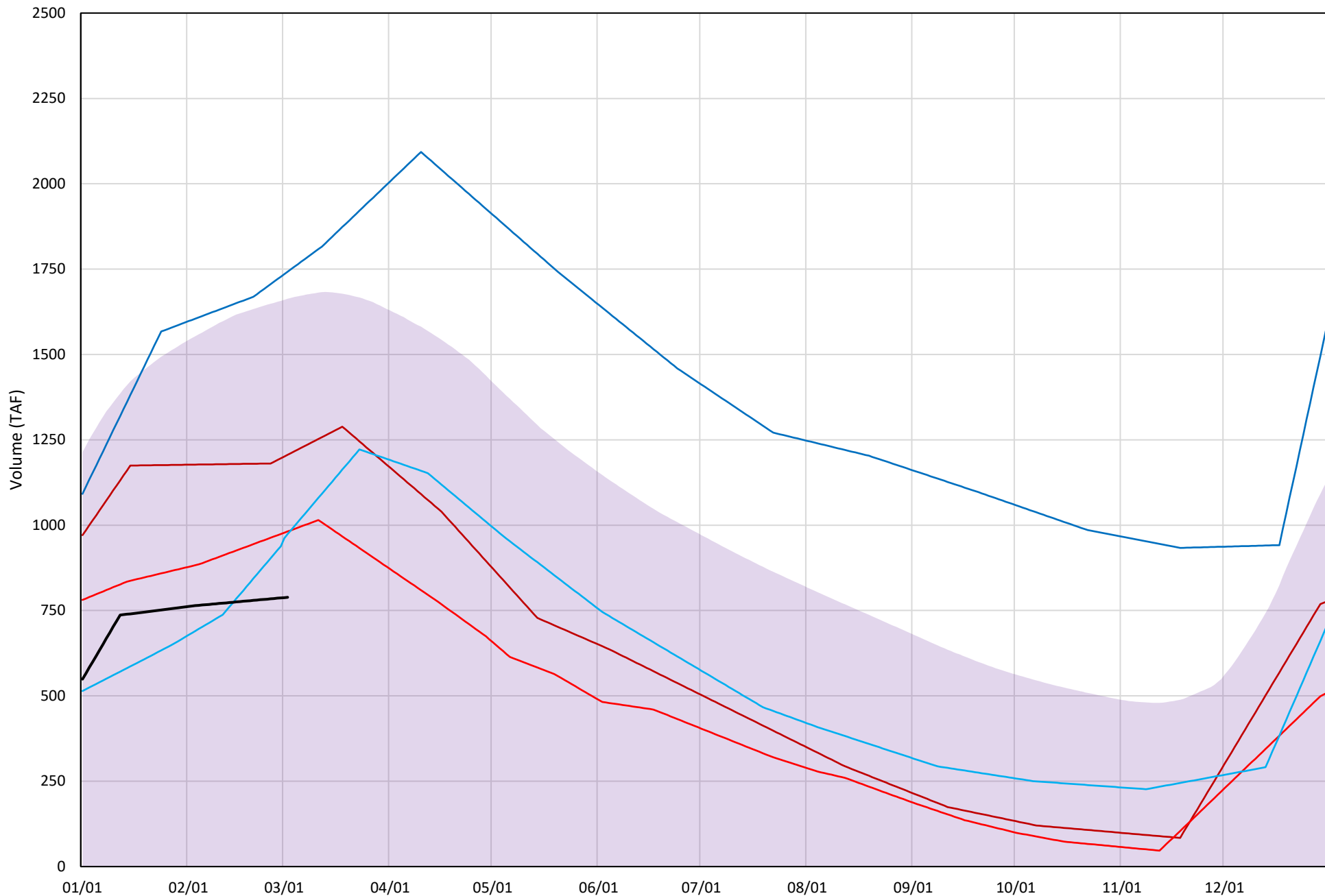
Trinity Lake Cold Water Pool Volume ≤52°F

Avg (2000-2021) 2014 2015 2016 2019 2022



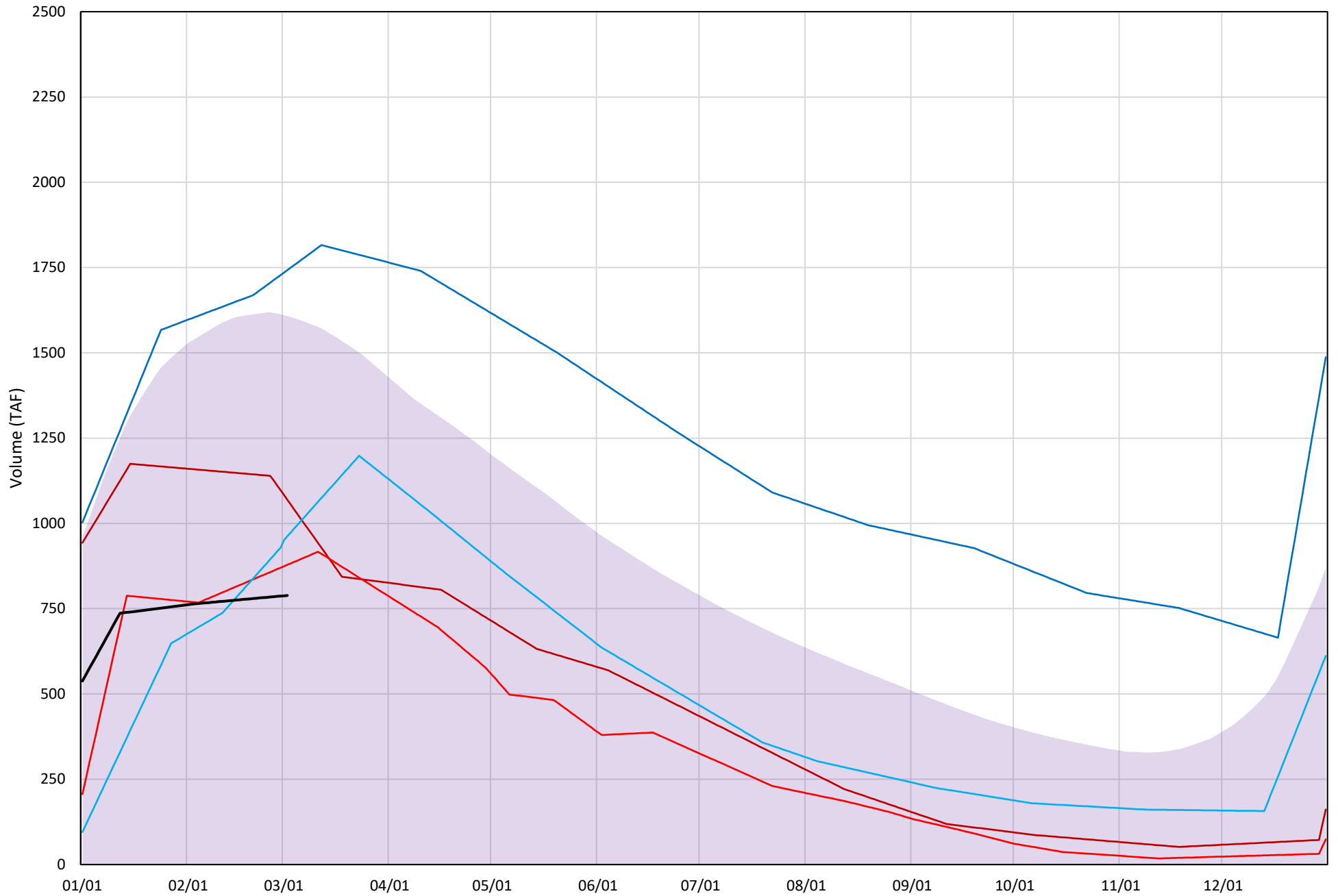
Trinity Lake Cold Water Pool Volume ≤50°F

Avg (2000-2021) 2014 2015 2016 2019 2022

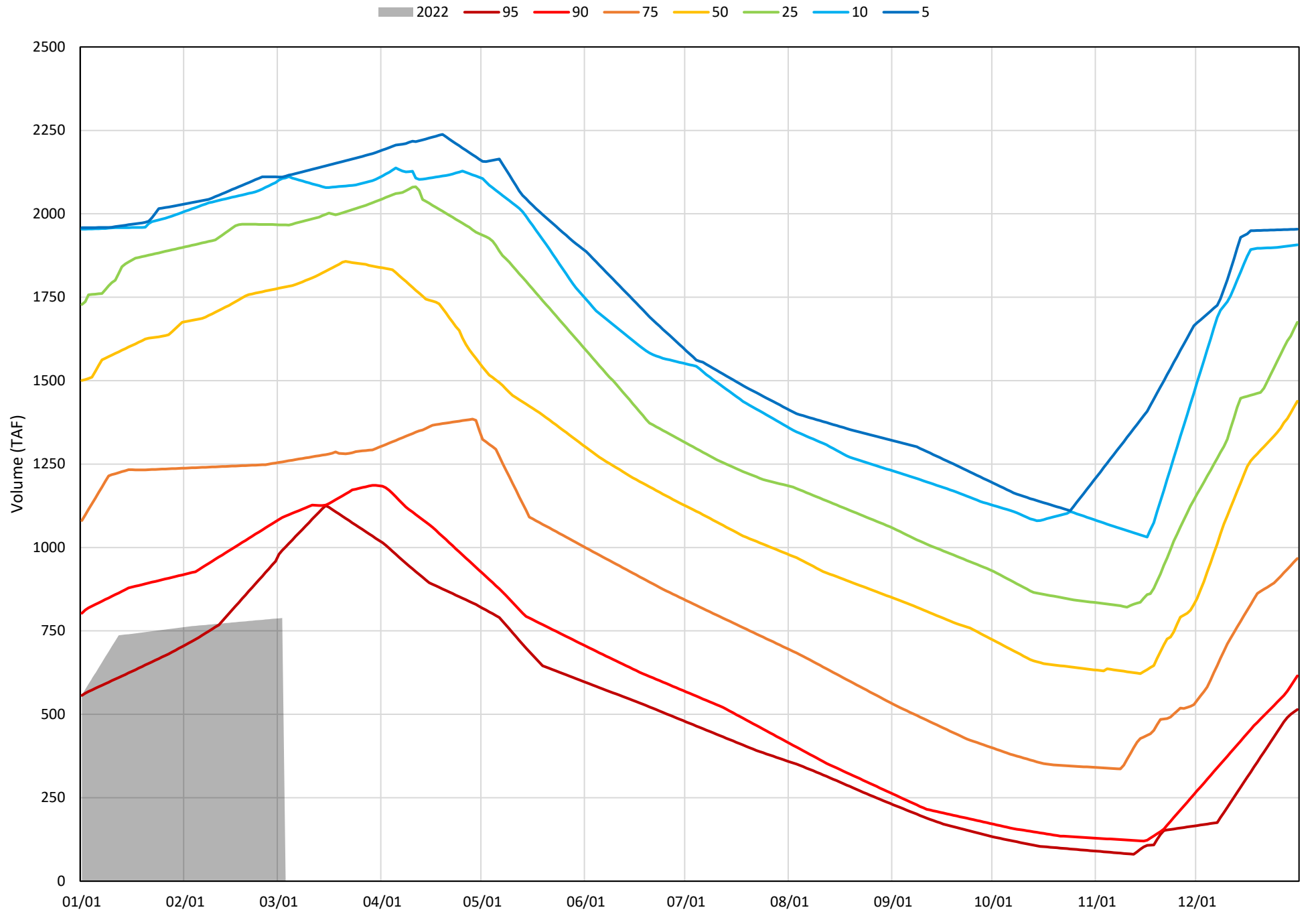


Trinity Lake Cold Water Pool Volume $\leq 48^{\circ}\text{F}$

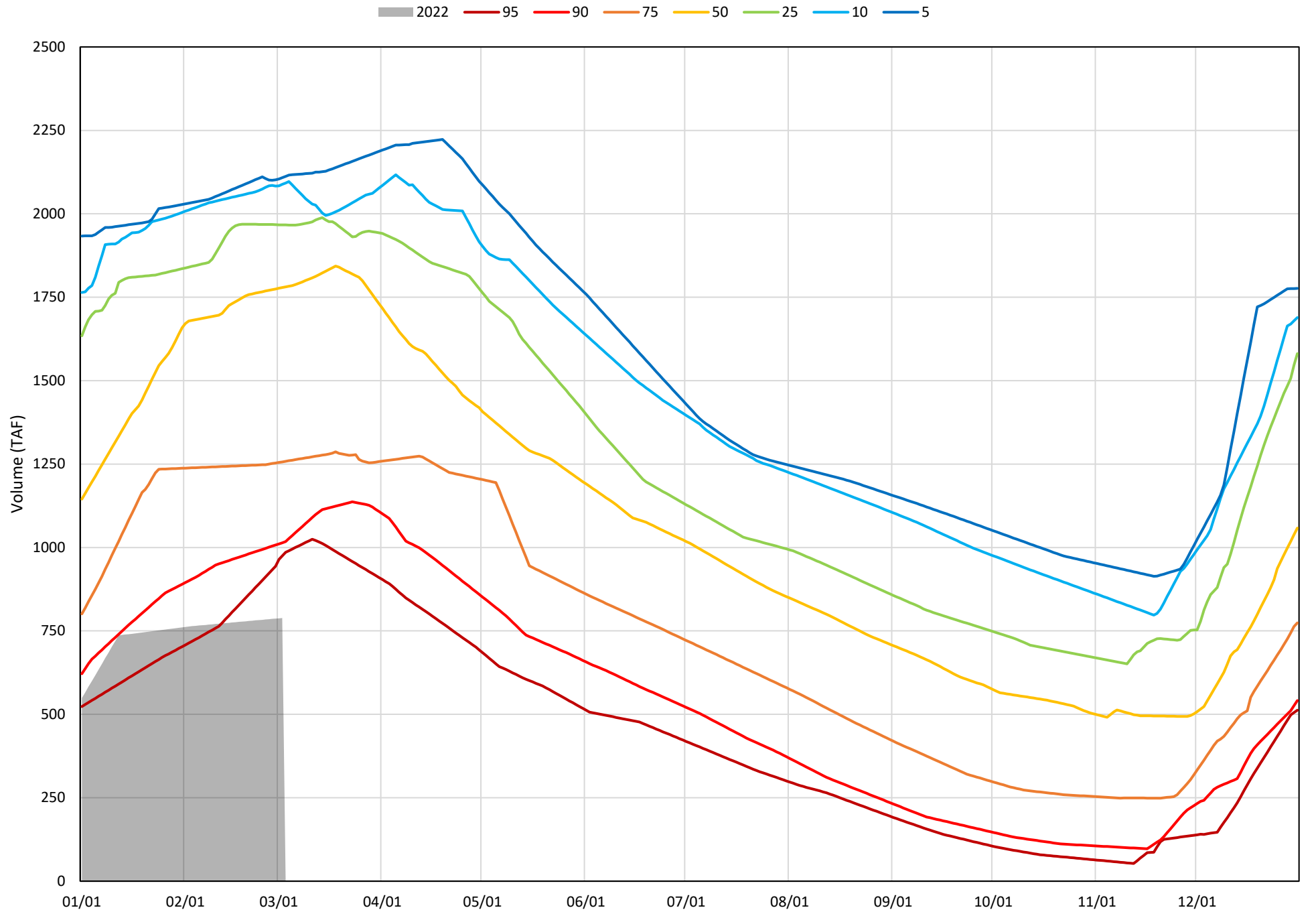
Avg (2000-2021) 2014 2015 2016 2019 2022



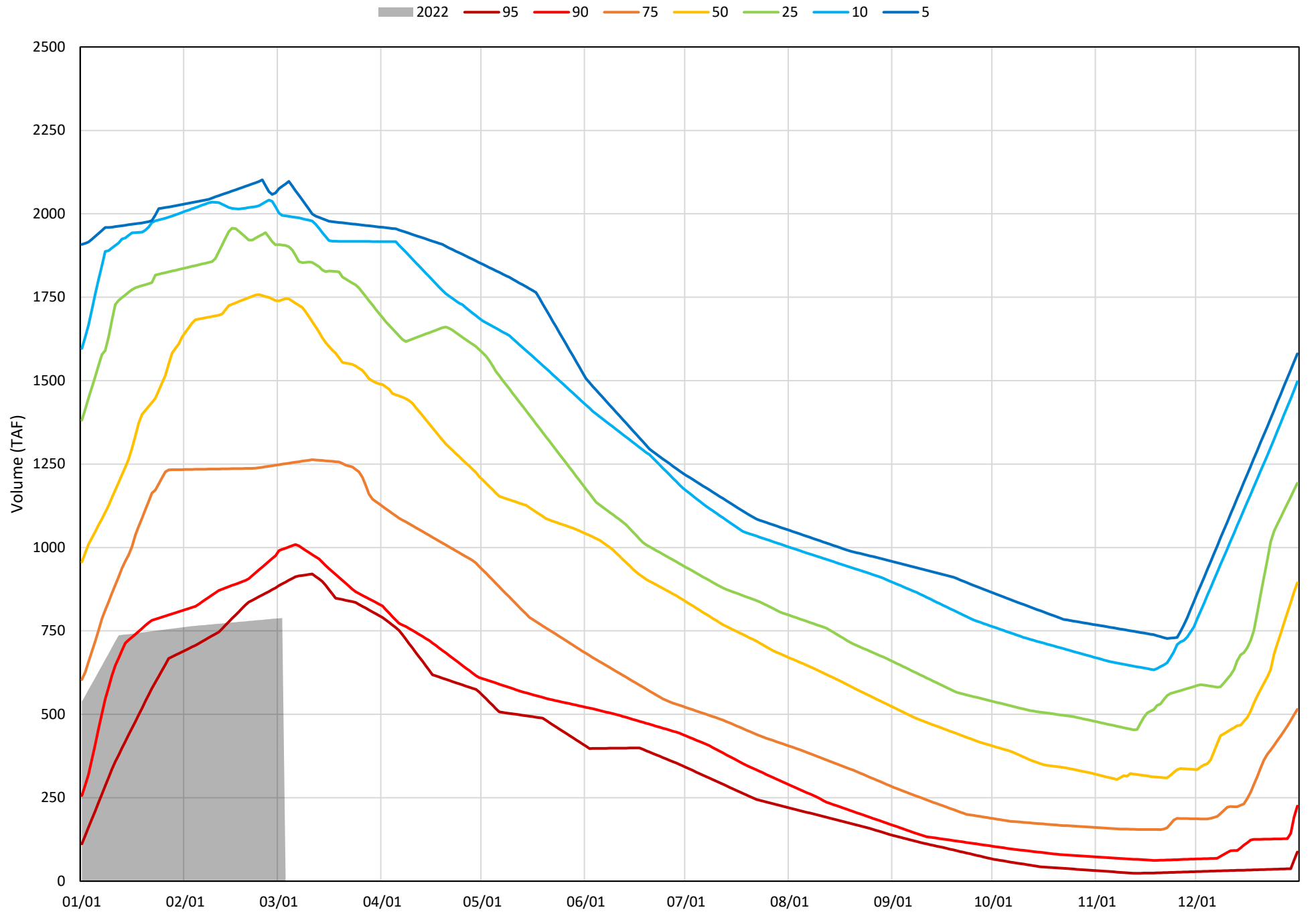
Trinity Lake Cold Water Pool Volume ≤52°F - Percent Exceedances (2000-2021)



Trinity Lake Cold Water Pool Volume $\leq 50^{\circ}\text{F}$ - Percent Exceedances (2000-2021)



Trinity Lake Cold Water Pool Volume $\leq 48^{\circ}\text{F}$ - Percent Exceedances (2000-2021)



Trinity Cold Water Pool Comparison by Year (for Specified Date)

Mar-03 2022	Δ TAF				% Δ			
	≤52°	≤50°	≤48°	Abs. Avg.	≤52°	≤50°	≤48°	Abs. Avg.
2000	1321	1282	1168	1257	168	163	148	159
2001	914	910	903	909	116	115	115	115
2002	969	969	954	964	123	123	121	122
2003	1162	1158	1060	1127	147	147	134	143
2004	1307	1307	1307	1307	166	166	166	166
2005	904	729	637	757	115	92	81	96
2006	1322	1322	1222	1288	168	168	155	163
2007	1117	1117	930	1054	142	142	118	134
2008	702	702	702	702	89	89	89	89
2009	302	302	302	302	38	38	38	38
2010	390	390	390	390	49	49	49	49
2011	1111	1111	1105	1109	141	141	140	141
2012	1170	1170	1170	1170	148	148	148	148
2013	1202	1202	1155	1186	152	152	146	150
2014	418	418	280	372	53	53	36	47
2015	301	193	90	195	38	24	11	25
2016	185	185	174	181	23	23	22	23
2017	1087	1087	1029	1068	138	138	130	135
2018	1012	1012	1012	1012	128	128	128	128
2019	954	954	954	954	121	121	121	121
2020	1236	1236	984	1152	157	157	125	146
2021	485	485	485	485	61	61	61	61
2022	0	0	0	0	0	0	0	0

Historic - Current

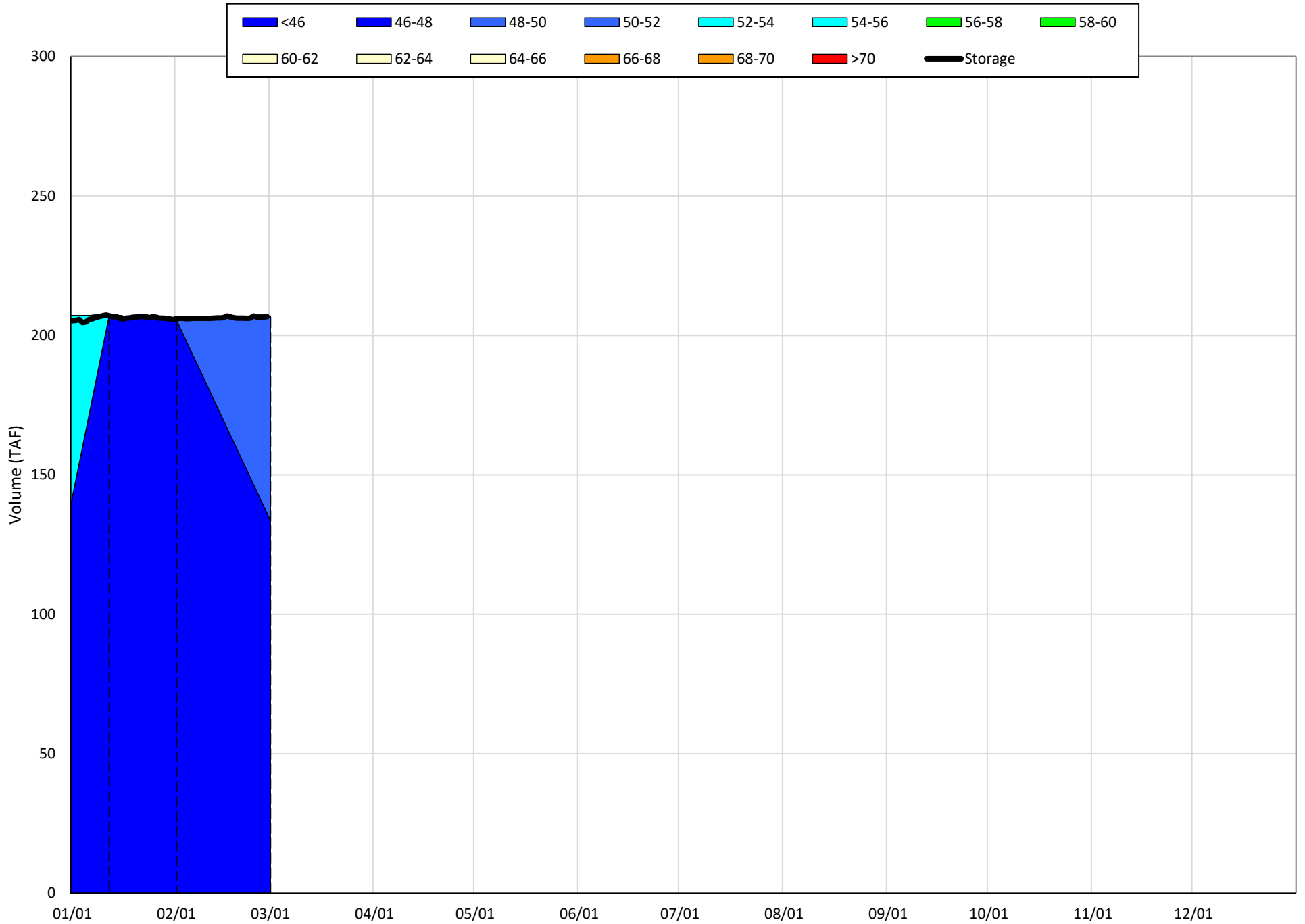
(Historic - Current) / Current

Whiskeytown Lake Isothermobaths & Cold Water Pool Statistics

2022

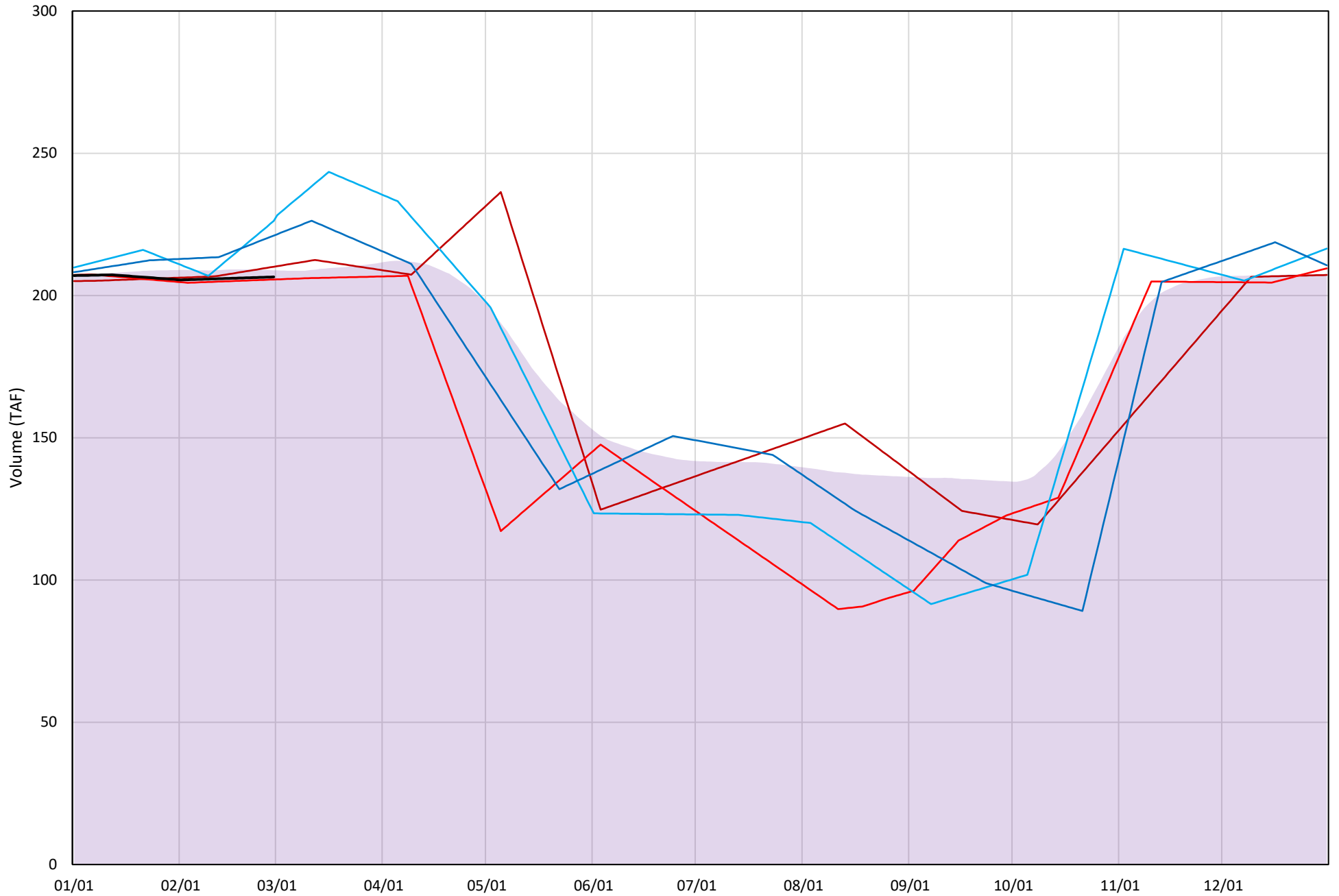
Page	Description
24	- Whiskeytown Lake Isothermobaths Plot
25	- Whiskeytown Lake Cold Water Pool Volume $\leq 60^{\circ}\text{F}$
26	- Whiskeytown Lake Cold Water Pool Volume $\leq 58^{\circ}\text{F}$
27	- Whiskeytown Lake Cold Water Pool Volume $\leq 56^{\circ}\text{F}$
28	- Whiskeytown Lake Cold Water Pool Volume $\leq 60^{\circ}\text{F}$ - Percent Exceedances
29	- Whiskeytown Lake Cold Water Pool Volume $\leq 58^{\circ}\text{F}$ - Percent Exceedances
30	- Whiskeytown Lake Cold Water Pool Volume $\leq 56^{\circ}\text{F}$ - Percent Exceedances
31	- Whiskeytown Lake Cold Water Pool Comparison by Year

Whiskeytown Lake Isothermobaths Plot - 2022



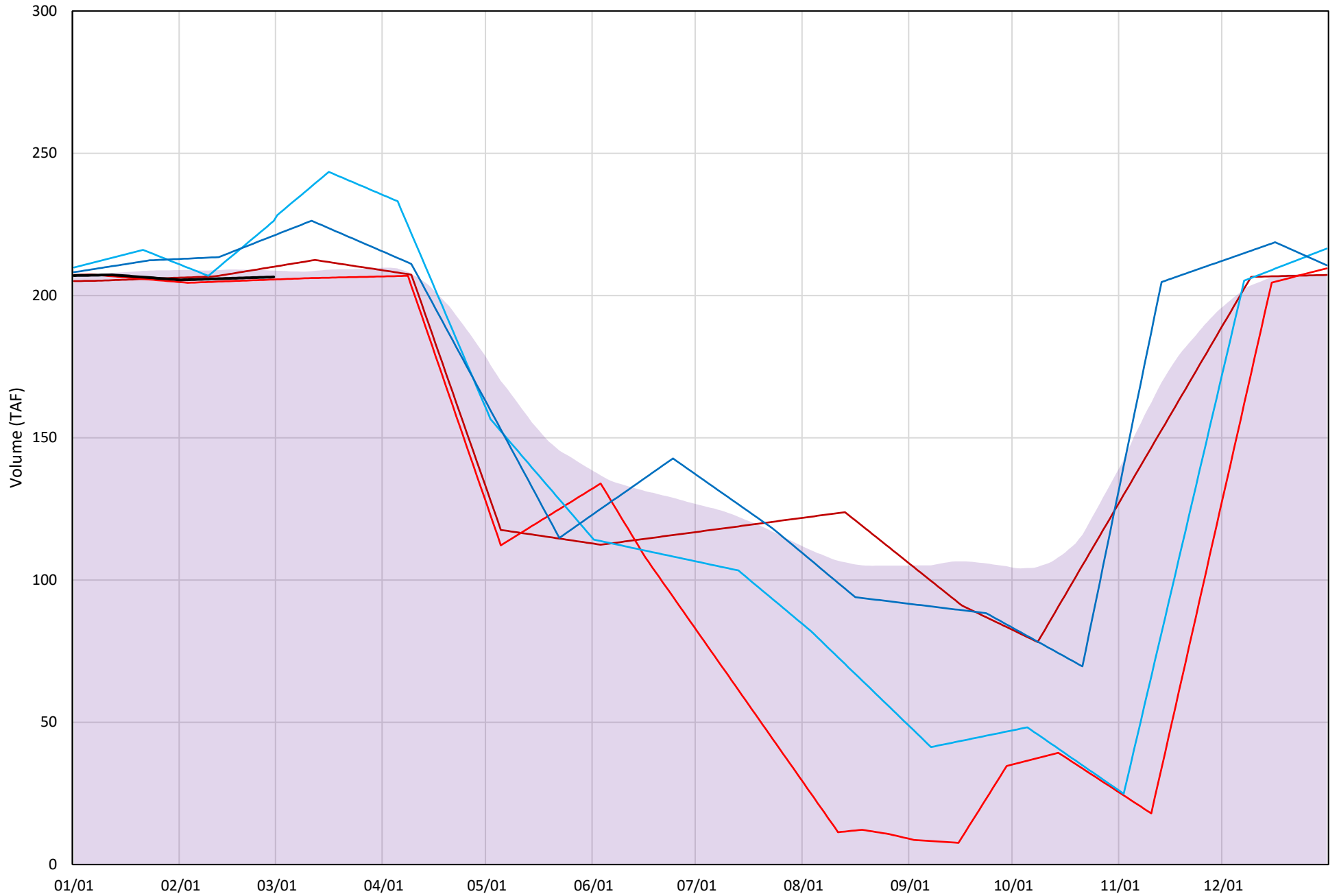
Whiskeytown Lake Cold Water Pool Volume $\leq 60^{\circ}\text{F}$

Avg (2000-2021) 2014 2015 2016 2019 2022



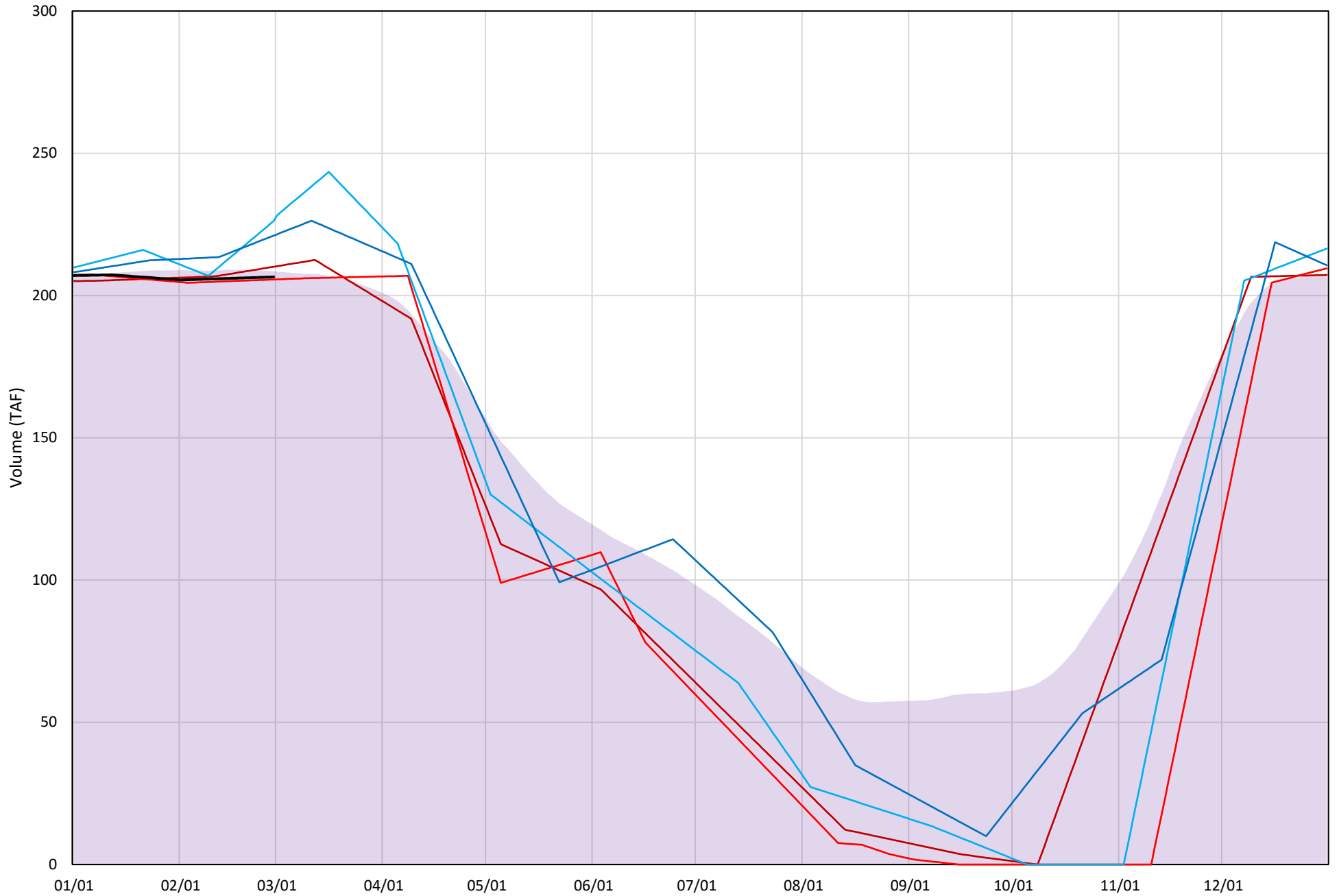
Whiskeytown Lake Cold Water Pool Volume $\leq 58^{\circ}\text{F}$

Avg (2000-2021) 2014 2015 2016 2019 2022

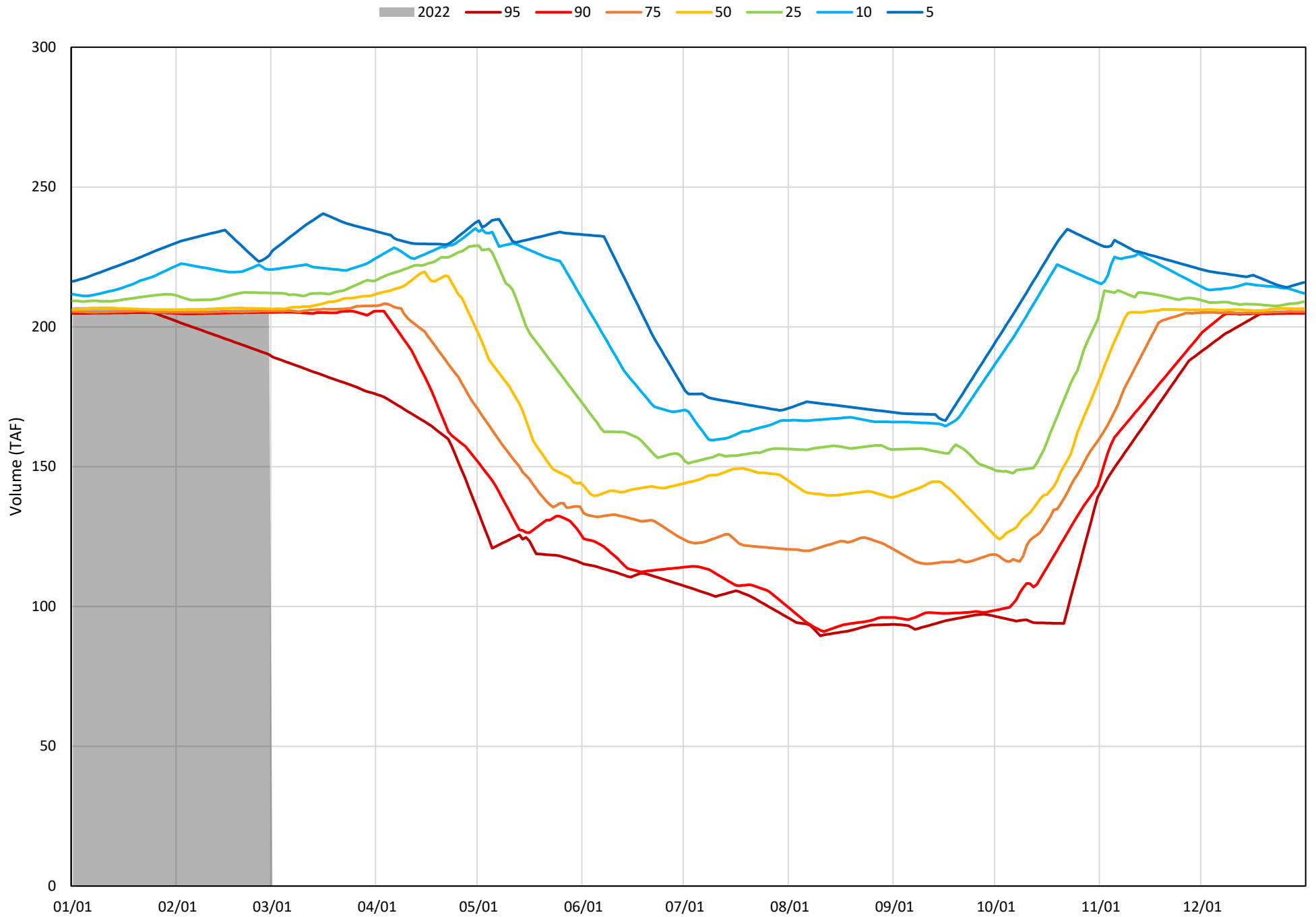


Whiskeytown Lake Cold Water Pool Volume $\leq 56^{\circ}\text{F}$

Avg (2000-2021) 2014 2015 2016 2019 2022

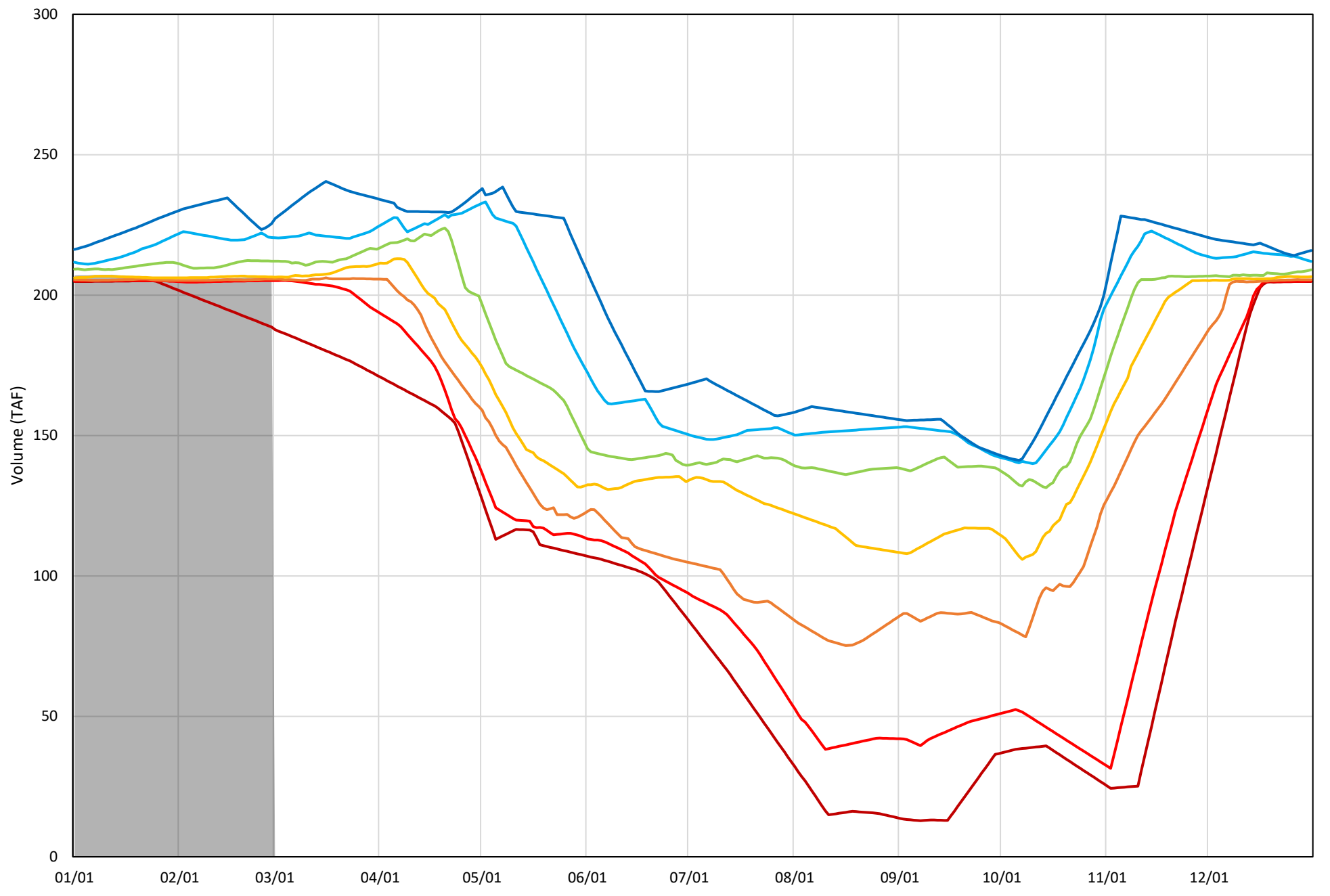


Whiskeytown Lake Cold Water Pool Volume $\leq 60^{\circ}\text{F}$ - Percent Exceedances (2000-2021)



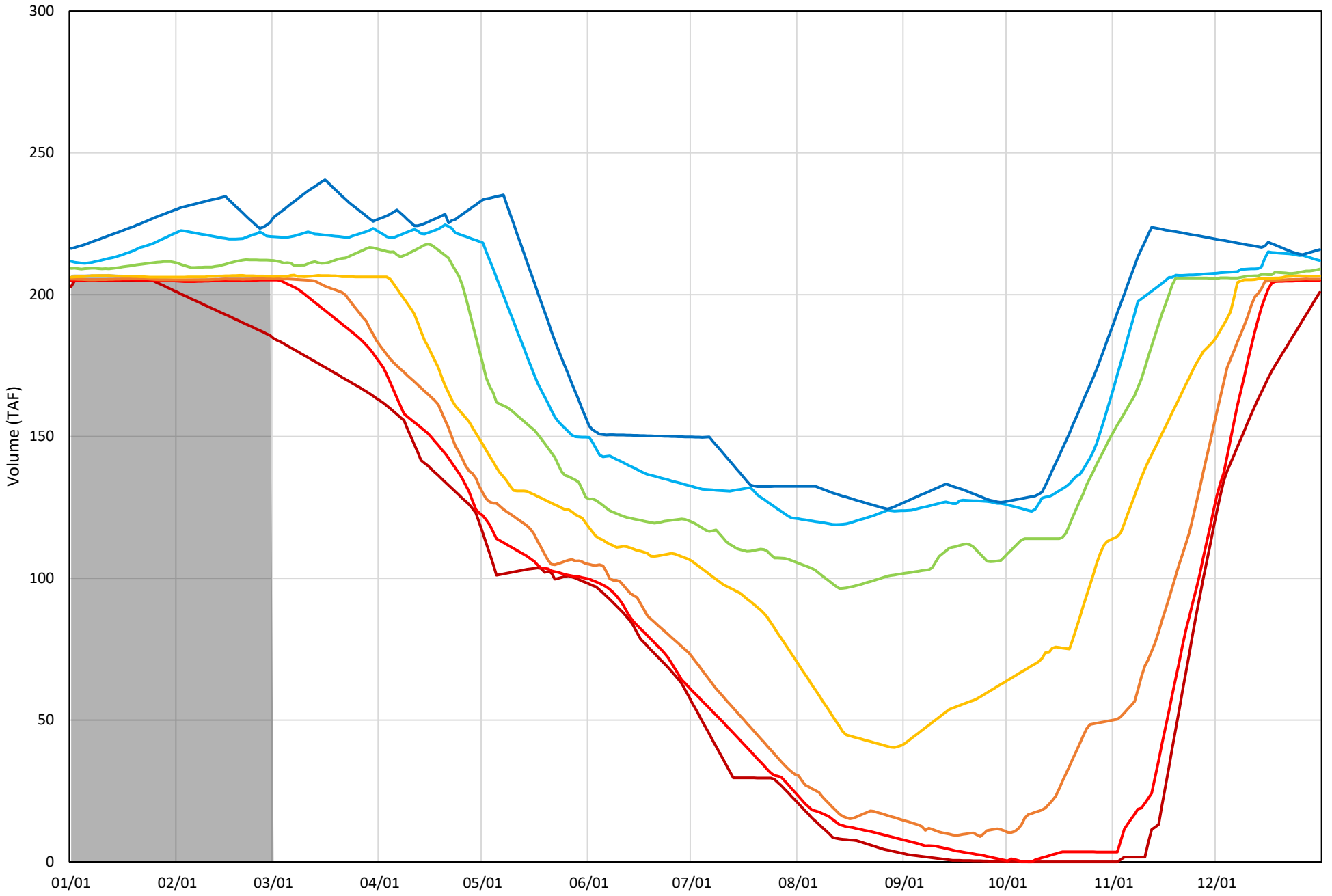
Whiskeytown Lake Cold Water Pool Volume $\leq 58^{\circ}\text{F}$ - Percent Exceedances (2000-2021)

2022 95 90 75 50 25 10 5



Whiskeytown Lake Cold Water Pool Volume $\leq 56^{\circ}\text{F}$ - Percent Exceedances (2000-2021)

2022 95 90 75 50 25 10 5



Whiskeytown Cold Water Pool Comparison by Year (for Specified Date)

Mar-01 2022	Δ TAF				% Δ			
	≤60°	≤58°	≤56°	Abs. Avg.	≤60°	≤58°	≤56°	Abs. Avg.
2000	-0.2	-0.2	-0.2	0.2	-0.1	-0.1	-0.1	0.1
2001	12.0	11.1	8.6	10.6	5.8	5.4	4.2	5.1
2002	-0.9	-0.9	-0.9	0.9	-0.4	-0.4	-0.4	0.4
2003	-0.8	-0.8	-0.8	0.8	-0.4	-0.4	-0.4	0.4
2004	-0.7	-0.7	-0.7	0.7	-0.3	-0.3	-0.3	0.3
2005	0.6	0.6	0.6	0.6	0.3	0.3	0.3	0.3
2006	-0.7	-0.7	-0.7	0.7	-0.3	-0.3	-0.3	0.3
2007	0.1	0.1	0.1	0.1	0.0	0.0	0.0	0.0
2008	2.1	2.1	2.1	2.1	1.0	1.0	1.0	1.0
2009	4.7	4.7	4.7	4.7	2.3	2.3	2.3	2.3
2010	8.2	8.2	8.2	8.2	4.0	4.0	4.0	4.0
2011	-1.2	-1.2	-1.2	1.2	-0.6	-0.6	-0.6	0.6
2012	-19.0	-20.8	-24.3	21.4	-9.2	-10.1	-11.8	10.4
2013	-1.4	-1.4	-1.4	1.4	-0.7	-0.7	-0.7	0.7
2014	3.6	3.6	3.6	3.6	1.7	1.7	1.7	1.7
2015	-0.9	-0.9	-0.9	0.9	-0.4	-0.4	-0.4	0.4
2016	19.7	19.7	19.7	19.7	9.5	9.5	9.5	9.5
2017	12.7	12.7	12.7	12.7	6.2	6.2	6.2	6.2
2018	-0.5	-0.5	-0.5	0.5	-0.3	-0.3	-0.3	0.3
2019	14.5	14.5	14.5	14.5	7.0	7.0	7.0	7.0
2020	-0.8	-0.8	-0.8	0.8	-0.4	-0.4	-0.4	0.4
2021	0.8	0.8	0.8	0.8	0.4	0.4	0.4	0.4
2022	0.0	0.0	0.0	0.0	0.0	0.0	0.0	0.0

Historic - Current

(Historic - Current) / Current