

# Northern CVP Water Temperature Report

## February - 2020

Page	Description
1	- Mean Daily Water Temperature, Release Flow Rates and Air Temperatures with Monthly Averages
2	- Redding 10-Day Forecasted Air Temperatures
3	- Sacramento River Mean Daily Water Temperature, Air Temperature and 10-Day Forecasted Air Temperature Plot - Water Temperature Measuring Station Details - Temperature Control Point Details
4	- Shasta Lake Isothermobaths Plot
5	- Trinity Lake Isothermobaths Plot
6	- Whiskeytown Lake Isothermobaths Plot
x	- <a href="#">TCD Configuration</a> (External Link)



— BUREAU OF —  
RECLAMATION

All Data in this Report is Preliminary and Subject to Change

DATE	Mean Daily Water Temperatures (°F)													Mean Daily Release (CFS)			Mean Daily Air Temperatures (°F)			
	TCD <sup>1</sup>	SHD	SPP <sup>1</sup>	KWK	SAC	CCR	BSF <sup>2</sup>	JLF	BND	RDB	IGO	LWS	-----	Shasta Generation	Spring Creek P.P.	Keswick Total	RDD	BSF	RDB	LWS
Jan	51.1	50.3	47.9	50.1	50.1	50.0	49.8	49.7	49.9	49.6	47.2	43.4	-	4522	184	5043	47.8	46.8	48.0	-
02/01	50.2	49.5	47.9	49.6	49.7	49.6	50.0	50.3	50.6	50.8	47.6	44.8	-	4415	37	5050	50.5	47.8	51.7	-
02/02	50.2	49.5	47.4	49.6	49.7	49.5	49.8	50.0	50.2	49.8	47.2	43.6	-	4090	102	4848	49.5	48.4	49.7	-
02/03	50.2	49.3	48.3	49.2	49.3	48.9	48.5	48.3	48.5	48.5	46.1	42.4	-	3992	44	4580	44.0	41.0	43.6	-
02/04	50.2	49.4	48.1	49.0	49.0	48.6	47.8	47.4	47.5	47.3	46.1	42.2	-	5648	49	4374	48.5	44.8	45.4	-
02/05	50.0	49.3	47.3	48.9	49.0	48.9	48.2	47.8	47.8	47.2	46.7	42.5	-	4127	217	4203	52.0	45.8	48.4	-
02/06	49.9	49.2	48.1	49.1	49.4	49.7	49.2	48.9	48.9	48.3	47.4	43.1	-	3522	39	4006	56.5	50.5	51.8	-
02/07	50.0	49.1	48.3	49.2	49.5	49.8	49.7	49.8	49.9	49.6	47.5	43.7	-	3520	37	3935	51.0	47.5	49.3	-
02/08	49.9	49.0	48.3	49.3	49.5	49.7	49.6	49.6	49.8	49.7	47.1	43.0	-	3455	37	3929	49.5	47.3	50.3	-
02/09	50.0	49.2	48.3	49.1	49.3	49.3	48.9	48.8	48.8	48.7	46.7	42.6	-	3422	37	3988	54.0	52.8	53.9	-
02/10	50.3	49.2	48.4	49.0	49.3	49.5	49.3	49.2	49.3	48.9	46.8	42.4	-	4272	37	3987	61.5	60.3	59.8	-
02/11	50.1	49.2	48.3	49.1	49.5	49.8	49.9	50.1	50.2	49.9	47.2	42.7	-	3865	37	4031	61.5	59.3	60.8	-
02/12	49.8	49.0	48.4	49.4	49.7	50.0	50.2	50.5	50.8	50.7	47.4	43.0	-	3472	37	4036	57.5	54.1	58.8	-
02/13	49.7	49.0	48.3	49.3	49.6	49.9	49.9	50.2	50.4	50.4	46.9	43.1	-	3418	37	4048	49.5	47.1	50.3	-
02/14	49.7	48.9	47.9	49.3	49.6	50.0	50.1	50.3	50.5	50.3	47.2	43.6	-	3243	105	4049	52.5	48.2	50.5	-
02/15	49.5	48.8	47.9	49.2	49.5	49.9	50.1	50.5	50.7	50.5	47.4	43.9	-	3325	67	3988	51.0	50.0	51.4	-
02/16	49.6	48.9	48.4	49.3	49.6	50.1	51.1	51.6	51.8	51.4	48.2	45.5	-	3996	37	3996	58.0	57.5	57.5	-
02/17	49.5	48.9	48.4	49.2	49.5	49.9	50.3	51.0	51.4	51.4	47.7	45.3	-	3444	37	3996	55.5	53.3	55.9	-
02/18	49.9	49.2	48.3	49.1	49.4	49.6	49.8	50.1	50.3	50.3	47.3	43.8	-	3197	37	3986	52.5	49.5	52.3	-
02/19	50.1	49.1	47.6	48.9	49.2	49.5	49.5	49.8	50.0	49.9	47.2	43.6	-	3771	121	3961	50.5	46.4	50.0	-
02/20	49.3	48.9	47.5	49.0	49.3	49.5	49.7	49.9	50.1	49.8	47.3	44.3	-	3376	315	3962	52.0	48.2	51.3	-
02/21	50.1	? 48.7	48.7	49.1	49.3	49.5	49.8	50.3	50.6	50.3	47.7	44.5	-	4110	37	4355	55.5	50.7	55.6	-
02/22	50.4	? 49.0	48.5	49.1	49.6	50.0	50.2	50.5	50.7	50.7	48.0	44.6	-	4422	37	4417	57.5	51.7	57.0	-
02/23	49.5	? 48.6	48.6	49.1	49.3	49.6	50.3	50.9	51.2	51.1	47.7	45.3	-	4423	37	4993	50.0	48.1	50.0	-
02/24	50.0	? 48.8	48.4	49.1	49.5	49.8	50.1	50.5	50.8	50.8	47.7	45.7	-	4369	15	5014	55.0	52.0	55.4	-
02/25	49.7	? 48.9	-	49.0	49.5	49.9	50.5	51.1	51.4	51.2	48.2	45.9	-	4863	0	5008	63.5	59.3	62.6	-
02/26	50.0	? 48.9	-	49.2	49.7	50.1	50.8	51.3	51.7	51.7	48.5	46.2	-	5014	0	5012	57.0	53.7	57.7	-
02/27	49.6	48.7	-	49.4	49.8	50.3	50.9	51.5	51.9	52.0	48.4	? 46.4	-	4626	0	5006	59.0	55.2	58.2	-
02/28	49.4	48.6	#	49.4	49.7	50.1	50.8	51.5	51.9	51.9	48.1	46.4	-	4853	0	5010	55.5	52.3	55.5	-
02/29	49.7	? 48.8	#	49.3	49.5	49.7	50.3	51.0	51.4	51.4	48.1	46.4	-	4667	0	5011	50.0	50.1	54.7	-
-																				
-																				
Feb	49.9	49.0	48.1	49.2	49.5	49.7	49.8	50.1	50.3	50.2	47.4	44.2	-	4032	55	4372	53.8	50.8	53.4	-

Total CFS	116917	1592	126779
Total AF	231900	3158	251461

Legend

- ? = 1-9 hours of data missing (Average includes estimations)
- ! = 10 or more hours of data missing (Average not calculated)
- # = Station out of service
- ↑ = Record high air temperature
- ↓ = Record low air temperature
- = Monthly Averages

Notes

- <sup>1</sup> Temperatures are weighted averages based on individual penstock flow and temperature
- Highlighted cells in the TCD column indicate a TCD change was made on that day
- <sup>2</sup> Current control point (see page 3 for more details)
- <sup>3</sup> Column not used this month

D A T E	Redding (RDD) Daily Air Temperatures (°F)																																				
	Actual			Forecasted																																	
	Previous Day			Current Day			1 Day			2 Days			3 Days			4 Days			5 Days			6 Days			7 Days			8 Days			9 Days			10 Days			
	↓	↑	Avg	↓	↑	Avg	↓	↑	Avg	↓	↑	Avg	↓	↑	Avg	↓	↑	Avg	↓	↑	Avg	↓	↑	Avg	↓	↑	Avg	↓	↑	Avg	↓	↑	Avg				
02/01	42	69	55.5	40	66	53.0	44	54	49.0	32	51	41.5	31	56	43.5	36	61	48.5	40	65	52.5	41	64	52.5	40	59	49.5	34	60	47.0	35	59	47.0	37	58	47.5	
02/02	40	61	50.5	45	54	49.5	31	52	41.5	32	56	44.0	37	63	50.0	40	66	53.0	40	69	54.5	41	59	50.0	34	56	45.0	34	64	49.0	33	59	46.0	38	58	48.0	
02/03	42	57	49.5	38	53	45.5	32	56	44.0	35	64	49.5	39	69	54.0	41	70	55.5	40	64	52.0	38	61	49.5	46	65	55.5	36	58	47.0	35	56	45.5	39	59	49.0	
02/04	34	54	44.0	42	57	49.5	39	65	52.0	41	69	55.0	42	70	56.0	41	65	53.0	38	61	49.5	41	64	52.5	38	60	49.0	36	54	45.0	35	56	45.5	37	61	49.0	
02/05	41	56	48.5	47	63	55.0	38	67	52.5	41	67	54.0	40	60	50.0	39	58	48.5	37	62	49.5	37	61	49.0	34	53	43.5	34	54	44.0	33	58	45.5	38	60	49.0	
02/06	43	61	52.0	39	68	53.5	41	68	54.5	40	60	50.0	40	60	50.0	40	64	52.0	40	63	51.5	37	57	47.0	41	60	50.5	31	57	44.0	34	58	46.0	40	61	50.5	
02/07	38	75	56.5	35	72	53.5	39	60	49.5	39	60	49.5	40	67	53.5	41	70	55.5	41	68	54.5	41	69	55.0	45	74	59.5	43	71	57.0	44	69	56.5	44	65	54.5	
02/08	34	68	51.0	34	61	47.5	38	61	49.5	40	68	54.0	41	70	55.5	39	68	53.5	40	64	52.0	39	60	49.5	41	59	50.0	37	61	49.0	40	64	52.0	40	67	53.5	
02/09	33	66	49.5	47	62	54.5	38	69	53.5	43	71	57.0	40	68	54.0	40	65	52.5	39	61	50.0	38	61	49.5	44	65	54.5	37	67	52.0	40	66	53.0	40	68	54.0	
02/10	46	62	54.0	52	71	61.5	41	71	56.0	41	70	55.5	40	63	51.5	38	60	49.0	38	58	48.0	41	60	50.5	40	61	50.5	43	65	54.0	42	66	54.0	40	69	54.5	
02/11	50	73	61.5	57	73	65.0	40	69	54.5	38	65	51.5	39	65	52.0	38	62	50.0	41	61	51.0	37	60	48.5	42	67	54.5	39	65	52.0	41	65	53.0	41	69	55.0	
02/12	49	74	61.5	48	71	59.5	38	67	52.5	39	68	53.5	39	63	51.0	43	61	52.0	38	61	49.5	37	63	50.0	42	68	55.0	35	67	51.0	36	67	51.5	41	68	54.5	
02/13	42	73	57.5	34	68	51.0	39	69	54.0	40	66	53.0	45	63	54.0	38	61	49.5	38	65	51.5	39	66	52.5	39	65	52.0	39	67	53.0	41	64	52.5	42	66	54.0	
02/14	33	66	49.5	37	67	52.0	40	66	53.0	44	65	54.5	38	62	50.0	38	64	51.0	38	67	52.5	38	66	52.0	41	67	54.0	42	66	54.0	42	69	55.5	42	69	55.5	
02/15	37	68	52.5	37	65	51.0	45	65	55.0	40	63	51.5	37	67	52.0	38	67	52.5	39	68	53.5	40	70	55.0	42	65	53.5	43	58	50.5	39	61	50.0	37	68	52.5	
02/16	37	65	51.0	37	64	50.5	41	65	53.0	36	66	51.0	37	67	52.0	39	67	53.0	40	70	55.0	41	71	56.0	45	65	55.0	42	62	52.0	38	65	51.5	37	69	53.0	
02/17	48	68	58.0	48	67	57.5	38	66	52.0	36	67	51.5	38	66	52.0	38	71	54.5	41	71	56.0	44	63	53.5	47	65	56.0	40	66	53.0	40	68	54.0	41	68	54.5	
02/18	45	66	55.5	51	66	58.5	34	67	50.5	39	68	53.5	39	72	55.5	41	72	56.5	43	63	53.0	36	59	47.5	33	59	46.0	36	61	48.5	37	65	51.0	39	66	52.5	
02/19	39	66	52.5	35	68	51.5	39	69	54.0	41	74	57.5	41	73	57.0	42	65	53.5	41	66	53.5	41	69	55.0	39	70	54.5	41	72	56.5	42	71	56.5	43	71	57.0	
02/20	33	68	50.5	36	68	52.0	42	73	57.5	43	73	58.0	42	67	54.5	44	72	58.0	44	74	59.0	44	74	59.0	47	75	61.0	44	71	57.5	45	67	56.0	45	71	58.0	
02/21	35	69	52.0	36	73	54.5	42	73	57.5	42	66	54.0	40	73	56.5	44	77	60.5	44	76	60.0	45	77	61.0	46	73	59.5	42	66	54.0	45	67	56.0	43	67	55.0	
02/22	36	75	55.5	41	75	58.0	39	65	52.0	37	72	54.5	43	77	60.0	44	76	60.0	44	78	61.0	43	75	59.0	47	73	60.0	44	74	59.0	47	75	61.0	47	74	60.5	
02/23	41	74	57.5	40	67	53.5	37	72	54.5	43	77	60.0	43	76	59.5	44	80	62.0	43	76	59.5	43	69	56.0	45	59	52.0	42	69	55.5	47	71	59.0	46	72	59.0	
02/24	38	62	50.0	37	72	54.5	44	77	60.5	44	77	60.5	43	80	61.5	44	75	59.5	44	68	56.0	41	64	52.5	44	65	54.5	40	70	55.0	44	68	56.0	40	69	54.5	
02/25	36	74	55.0	44	77	60.5	42	74	58.0	43	79	61.0	43	75	59.0	46	66	56.0	40	61	50.5	40	69	54.5	43	67	55.0	43	63	53.0	38	65	51.5	36	73	54.5	
02/26	49	78	63.5	39	75	57.0	42	79	60.5	42	74	58.0	45	64	54.5	38	60	49.0	39	69	54.0	42	69	55.5	42	70	56.0	41	72	56.5	44	72	58.0	45	71	58.0	
02/27	39	75	57.0	38	78	58.0	42	73	57.5	41	62	51.5	37	60	48.5	38	69	53.5	42	73	57.5	41	72	56.5	42	69	55.5	41	66	53.5	39	65	52.0	41	69	55.0	
02/28	37	81	59.0	42	74	58.0	40	61	50.5	36	60	48.0	37	69	53.0	41	76	58.5	42	73	57.5	42	71	56.5	44	56	50.0	38	57	47.5	40	64	52.0	41	69	55.0	
02/29	39	72	55.5	38	63	50.5	37	60	48.5	36	70	53.0	44	78	61.0	42	74	58.0	43	73	58.0	42	67	54.5	40	57	48.5	38	61	49.5	42	67	54.5	45	70	57.5	
-																																					
-																																					

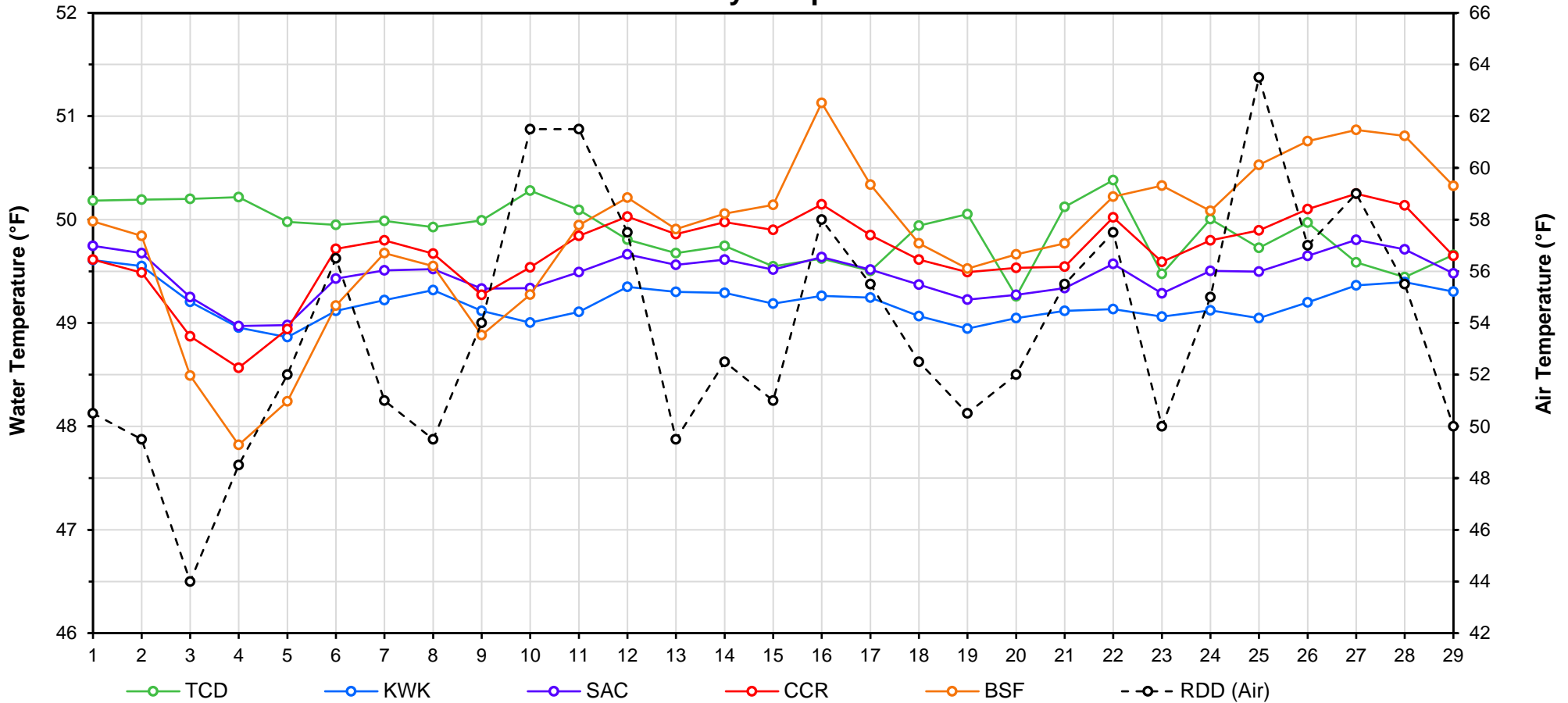
Web Links

- [10-Day Min/Max Forecast](#)
- [Previous Days Min/Max Actuals](#)

Legend

- NR = Forecasted temperatures not recorded
- 100** = Previous day actual temperatures in red and bolded indicate a record temperature for that date

# Mean Daily Temperatures



Station Details			
Code	Body of Water	Location <sup>1</sup>	CDEC Link
TCD	N/A	Shasta Power Plant	N/A
SHD	Sacramento River	0.3 miles downstream of Shasta Power Plant	<a href="#">Click Here</a>
SPP	N/A	Spring Creek Power Plant	N/A
KWK	Sacramento River	0.8 miles downstream of Keswick Dam	<a href="#">Click Here</a>
SAC	Sacramento River	4.8 miles downstream of Keswick Dam	<a href="#">Click Here</a>
CCR	Sacramento River	9.7 miles downstream of Keswick Dam	<a href="#">Click Here</a>
BSF	Sacramento River	25 miles downstream of Keswick Dam	<a href="#">Click Here</a>
JLF	Sacramento River	34 miles downstream of Keswick Dam	<a href="#">Click Here</a>
BND	Sacramento River	41 miles downstream of Keswick Dam	<a href="#">Click Here</a>
RDB	Sacramento River	58 miles downstream of Keswick Dam	<a href="#">Click Here</a>
IGO	Clear Creek	7.3 miles downstream of Whiskeytown Dam	<a href="#">Click Here</a>
LWS	Trinity River	1.1 miles downstream of Lewiston Dam	<a href="#">Click Here</a>
DGC <sup>2</sup>	Trinity River	19 miles downstream of Lewiston Dam	<a href="#">Click Here</a>
NFH <sup>3</sup>	Trinity River	38 miles downstream of Lewiston Dam	<a href="#">Click Here</a>

Temperature Control Point		
Point	Temp. (°F)	Begin Date
<b>BSF</b>	<b>56.0</b>	<b>5/15/2019</b>

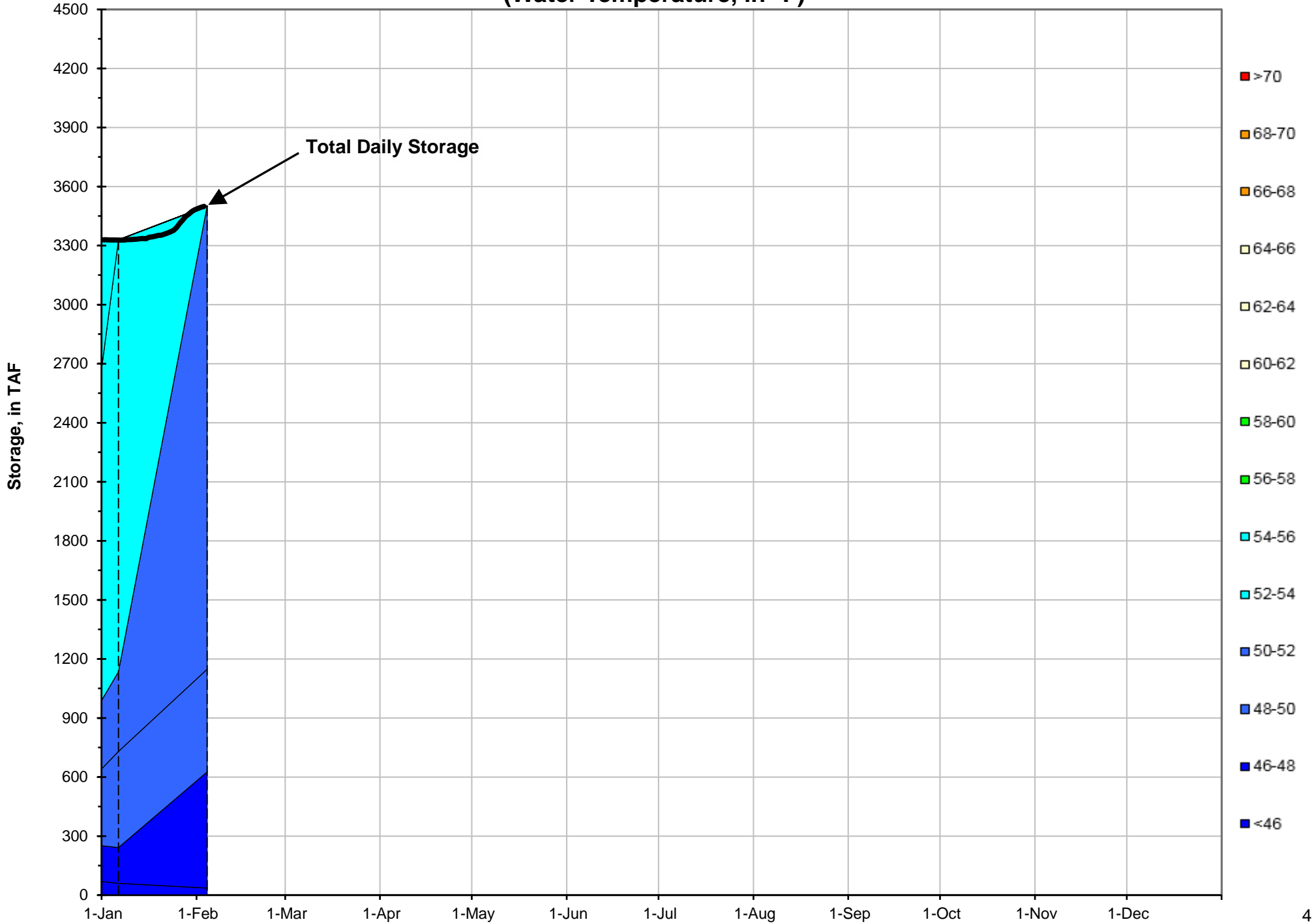
## Notes

<sup>1</sup> Distances are approximate

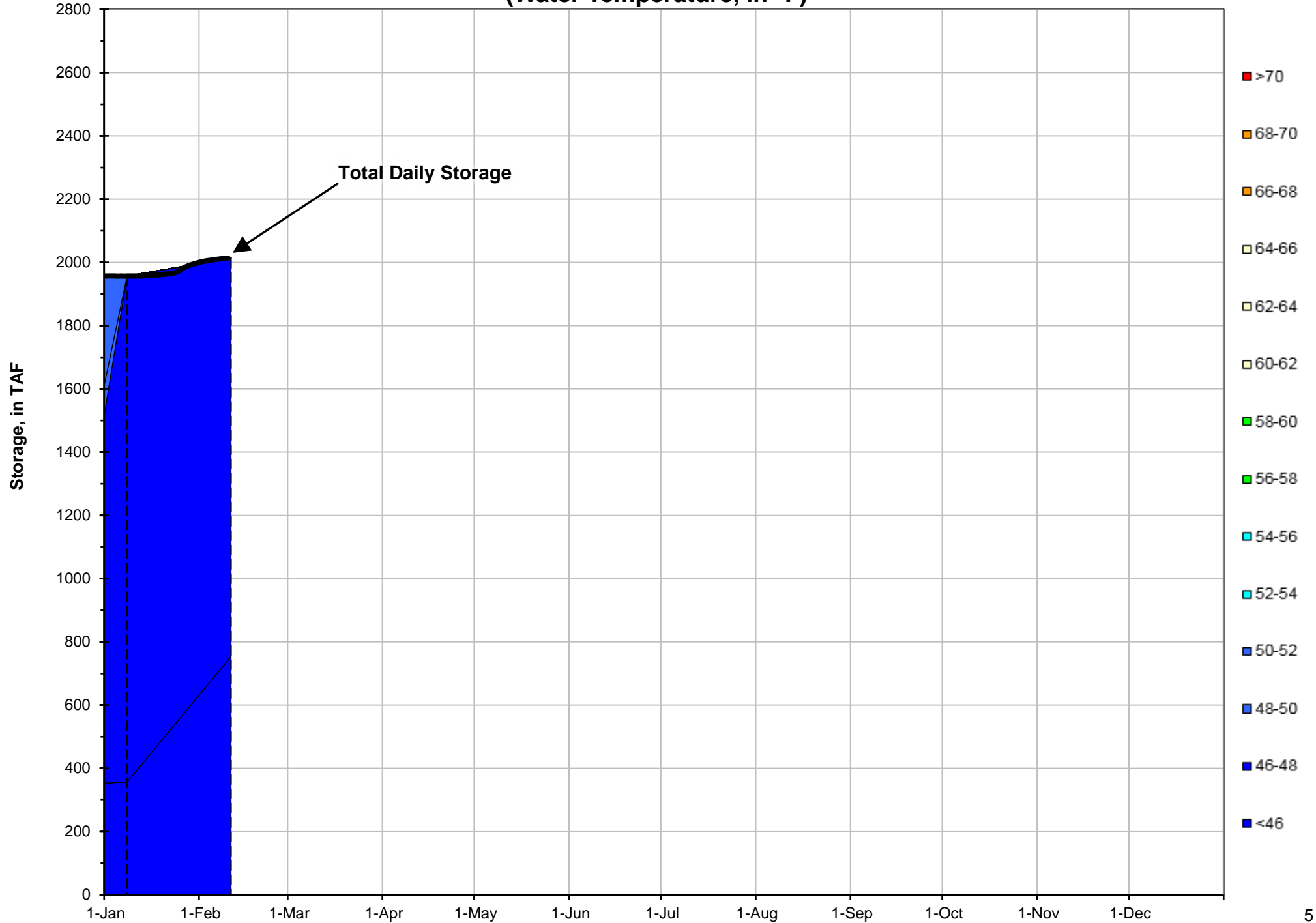
<sup>2</sup> DGC is only reported in September

<sup>3</sup> NFH is only reported in October, November and December

### Shasta Lake Isothermobaths - 2020 (Water Temperature, in °F)



### Trinity Lake Isothermobaths - 2020 (Water Temperature, in °F)



# Whiskeytown Lake Isothermobaths - 2020 (Water Temperature, in °F)

