

Appendix A - Abiotic Habitat

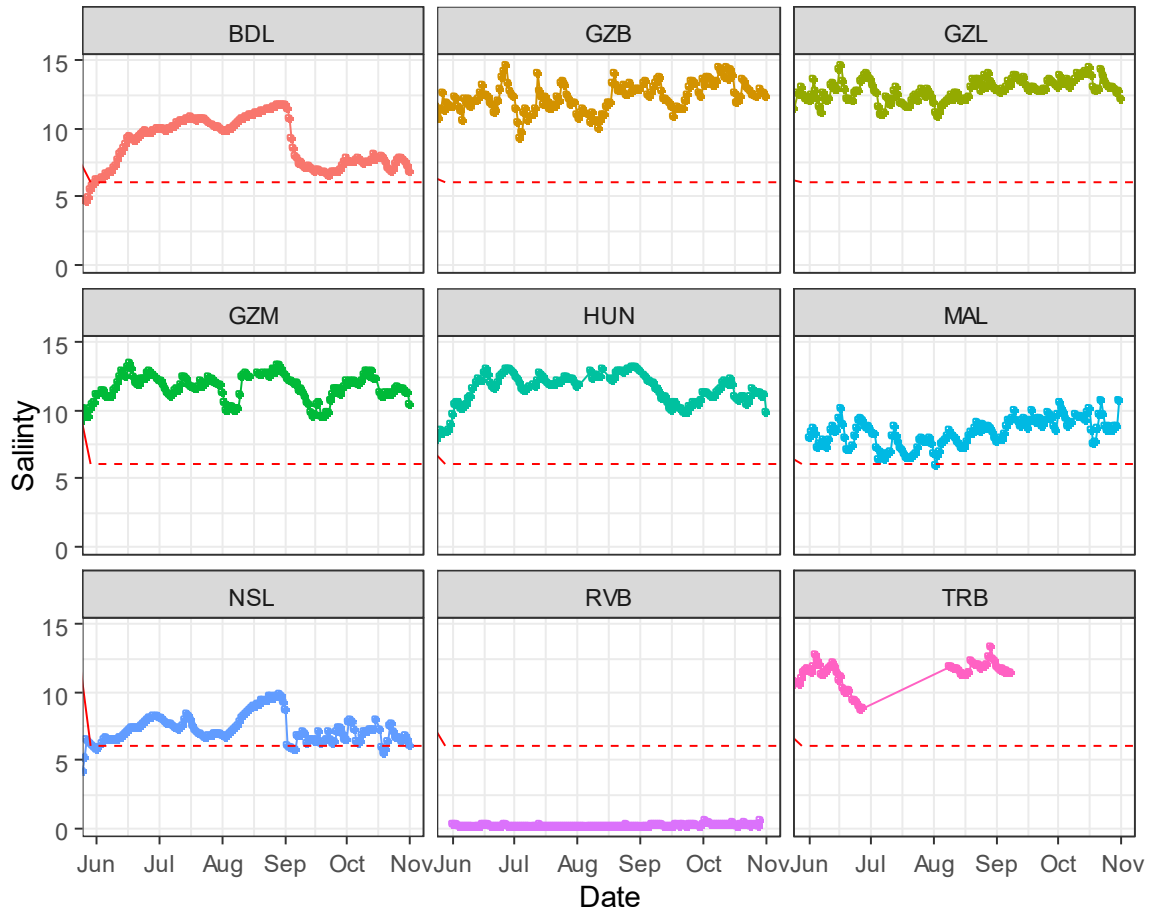


Figure 1. Daily mean salinity data converted from conductivity measurements taken at the stations listed in Figure 11 of the main document between June and October of 2022. Red dashed line indicates 6 parts per thousand (ppt). Note that data has not undergone quality control/check

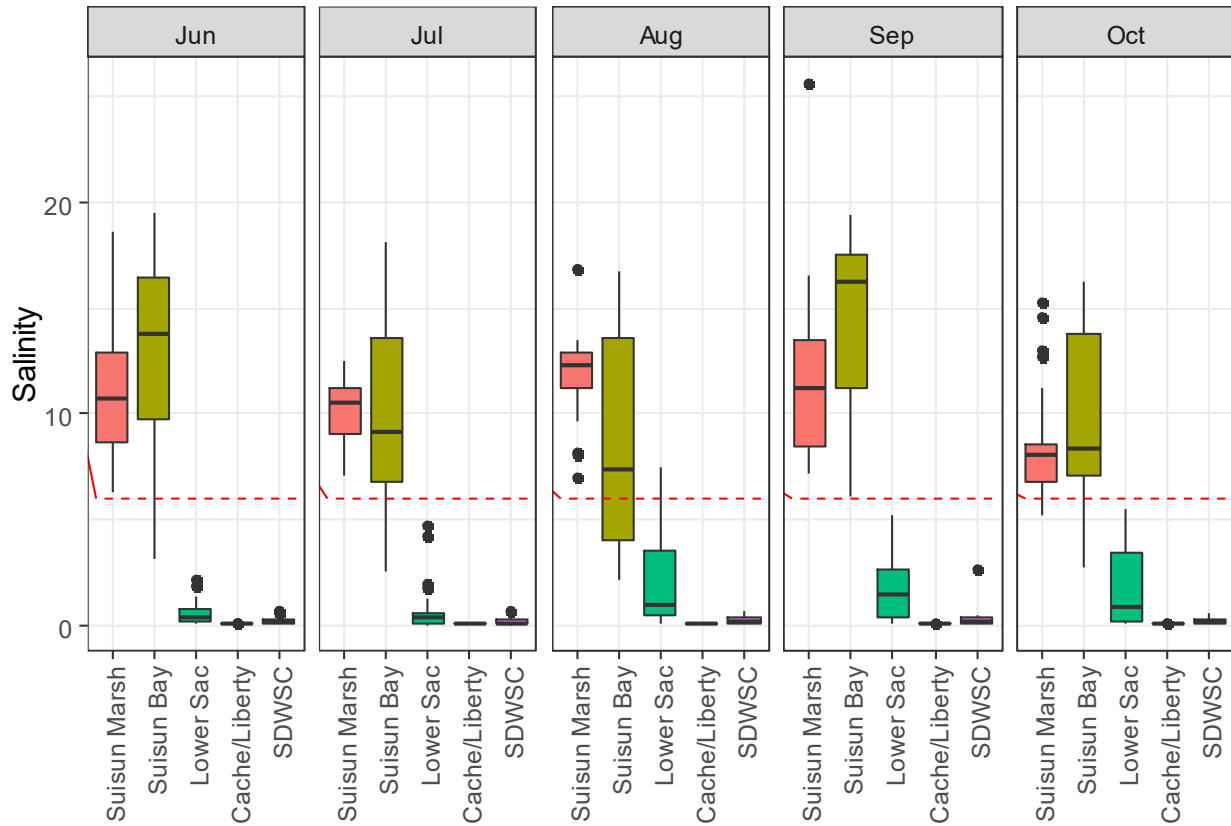


Figure 2. Salinity in practical salinity units (PSU) for discrete sampling by region and month conducted by DOP, STN, and EMP.

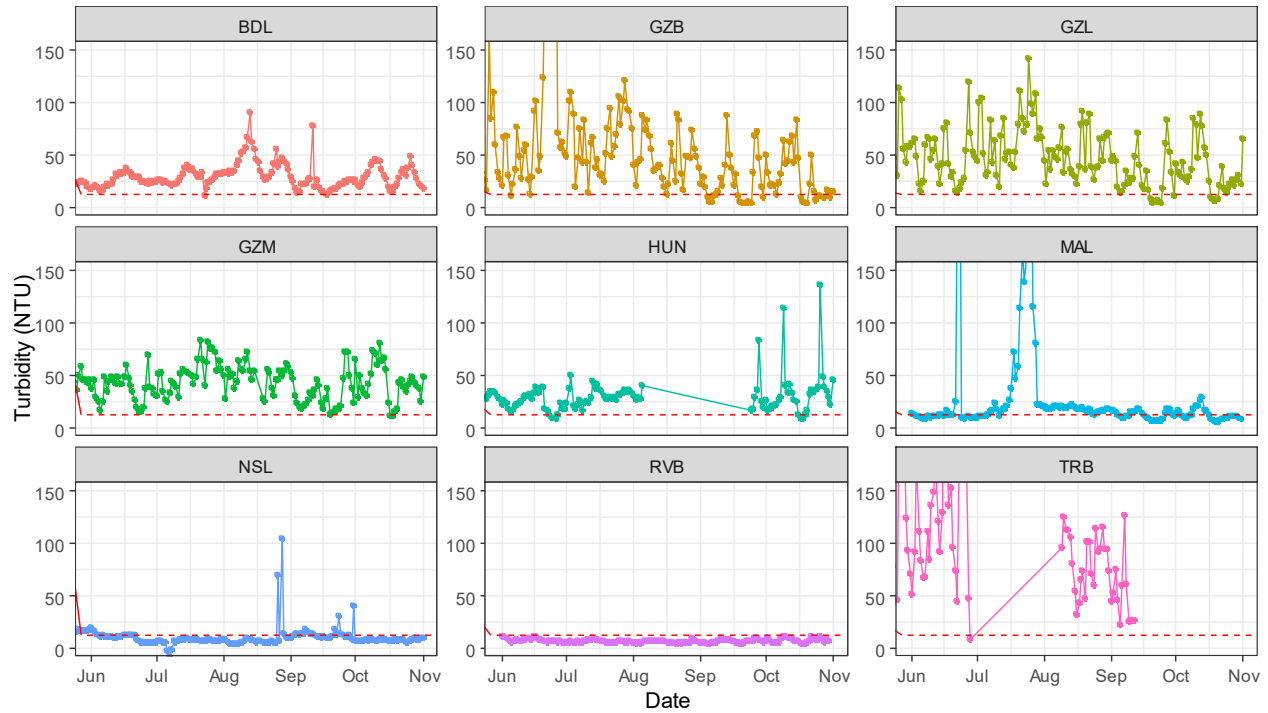


Figure 3. Daily Mean Turbidity data taken at the stations listed in Figure 11 of the main document between June and October of 2022. Red dashed line indicates 12 NTU, a turbidity threshold used in the Delta Smelt biological opinion. Data points above 150 NTU did occur at multiple stations in Summer-Fall 2022, particularly in June in GZB and TRB, and July at MAL, but they were uncommon (1.3% of data points) and therefore not shown on the plots. Note that data has not undergone quality control/check and that stations may actually record formazin nephelometric units (FNU) instead; however, the general turbidity patterns observed should remain valid.

2022 Summer-Fall Habitat Action Seasonal Report

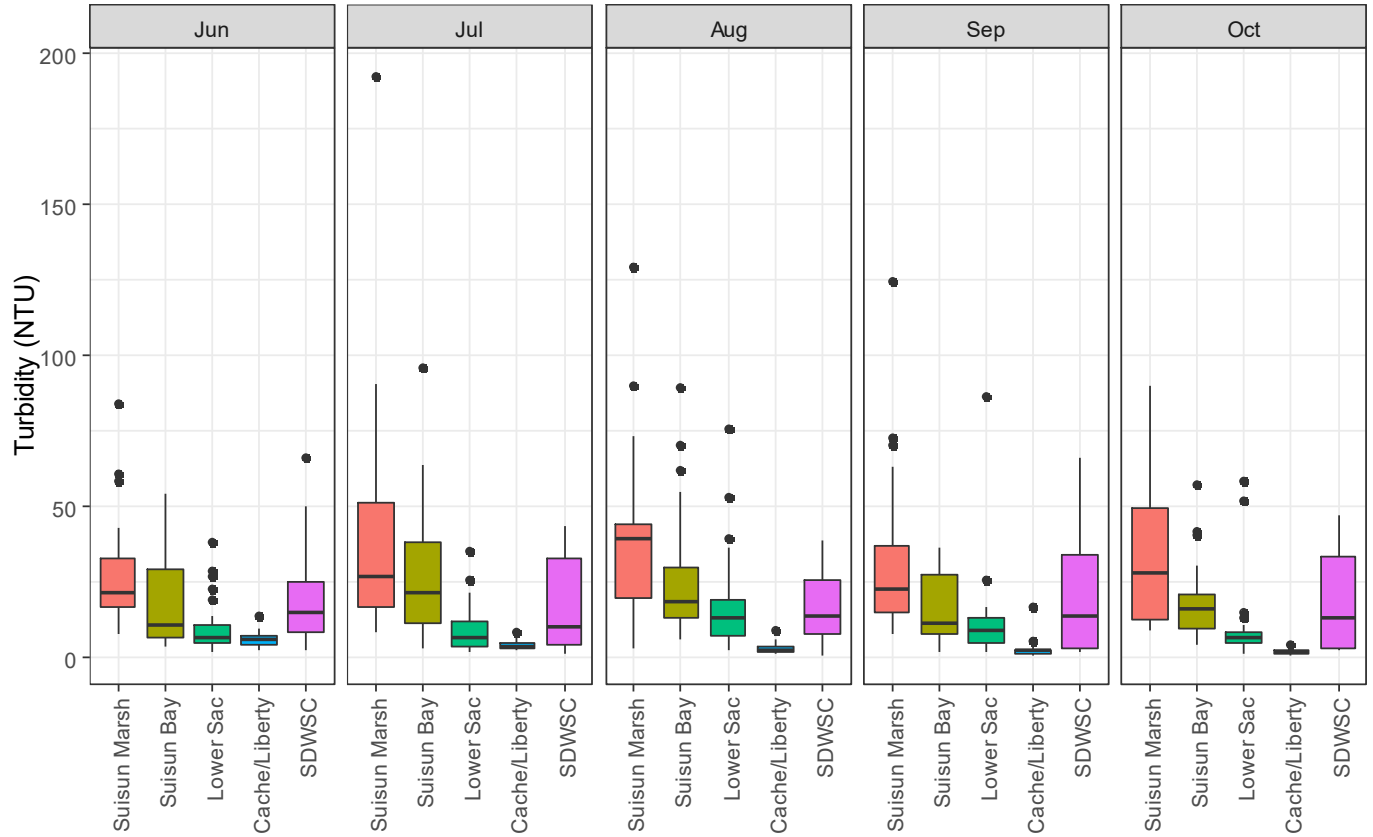


Figure 4. Discrete turbidity measurements (FNU) from EMP, STN, and DOP over the summer of 2022.

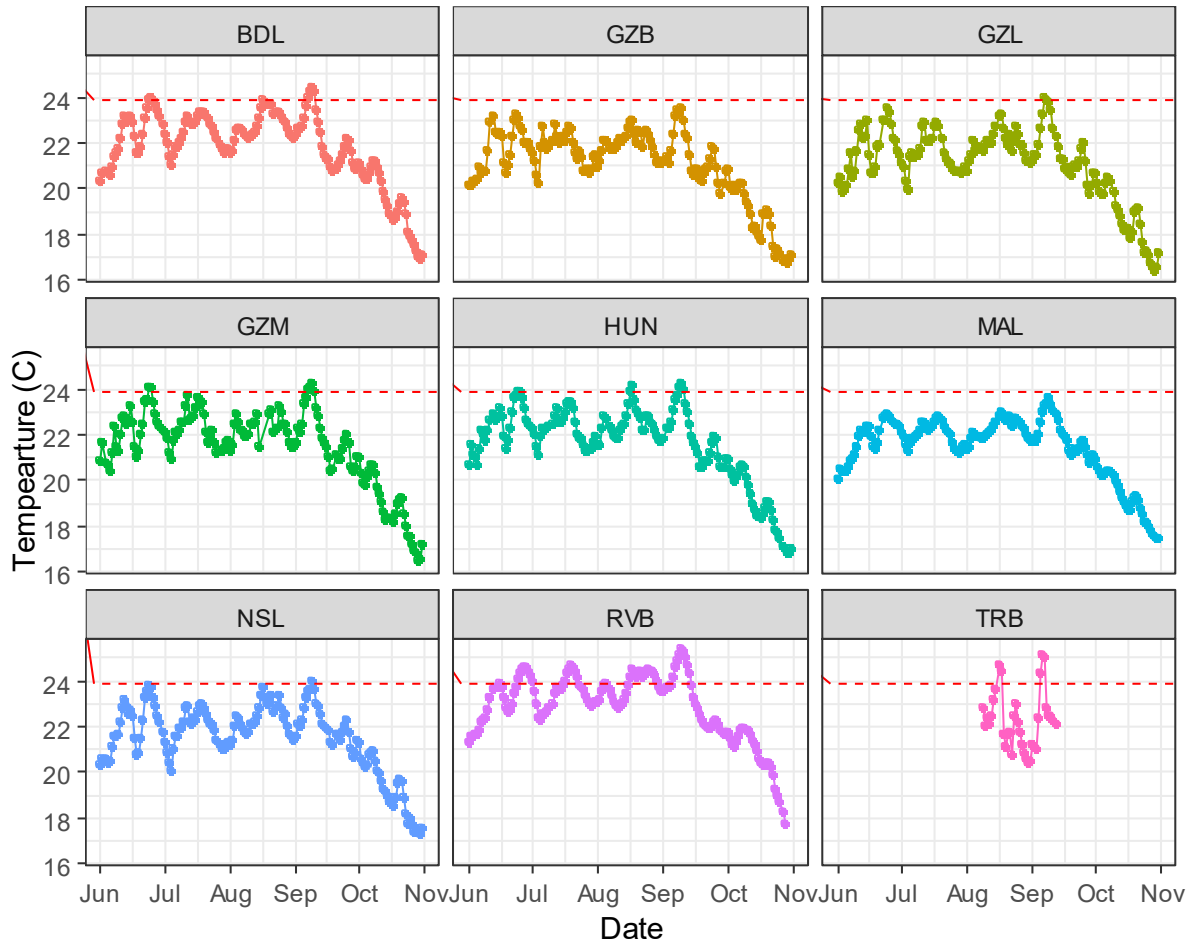


Figure 5. Daily mean temperatures at the stations listed in Figure 11 of the main document between June and October of 2022. Red dashed line indicates 23.9°C (75°F), a temperature considered stressful for delta smelt based on field data evaluation and physiological experiments. Note that data has not undergone quality control/check.

2022 Summer-Fall Habitat Action Seasonal Report

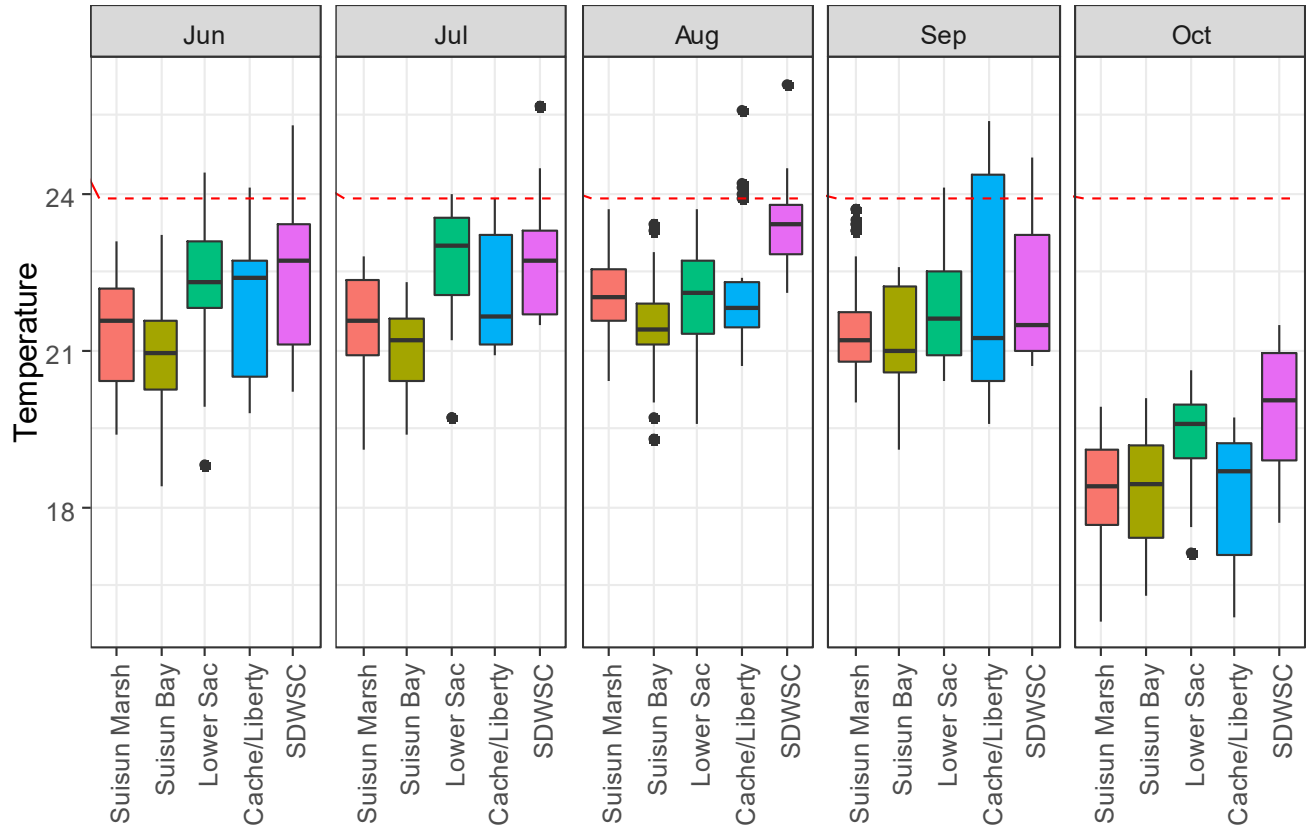


Figure 6. Discrete surface temperature data collected by DOP, STN, and EMP during the summer of 2022