



Construction on Canyon Ferry Dam began in May of 1948 and was completed in June of 1954. The dam is 1,000 feet long and 225 feet tall. At full pool the reservoir capacity is approximately 2 million acre/ft of water. To put this into perspective 1 acre/ft of water is equal to 325,851 gallons. The powerplant consists of 3 generating units, capable of producing approximately 50 megawatts of power.

The dam, powerplant, and reservoir constitute the Canyon Ferry Unit. Canyon Ferry Reservoir offers a wide range of water resources, including flood prevention, electric power generation, irrigation, fish and wildlife habitat, and recreation opportunities.

Remember to be safe and enjoy your visit. Canyon Ferry Dam is located on the Missouri River. The dam was constructed in a narrow constitution of the Missouri River Valley, where the Big Belt Mountains and the Spokane Hills merge. It sits approximately 68 miles downstream from the confluence of the Gallatin, Madison, and Jefferson Rivers.

The U.S. Bureau of Reclamation invites you to come and experience the many recreational opportunities available on your public lands around Canyon Ferry Reservoir. To enhance your enjoyment and the enjoyment of others, Public Conduct regulations have been established through 43 CFR Part 423 and are posted at all recreation sites. Failure to comply with these rules and regulations may result in you being asked to leave or other sanctions in accordance to 43 CFR Part 423 Subpart F.



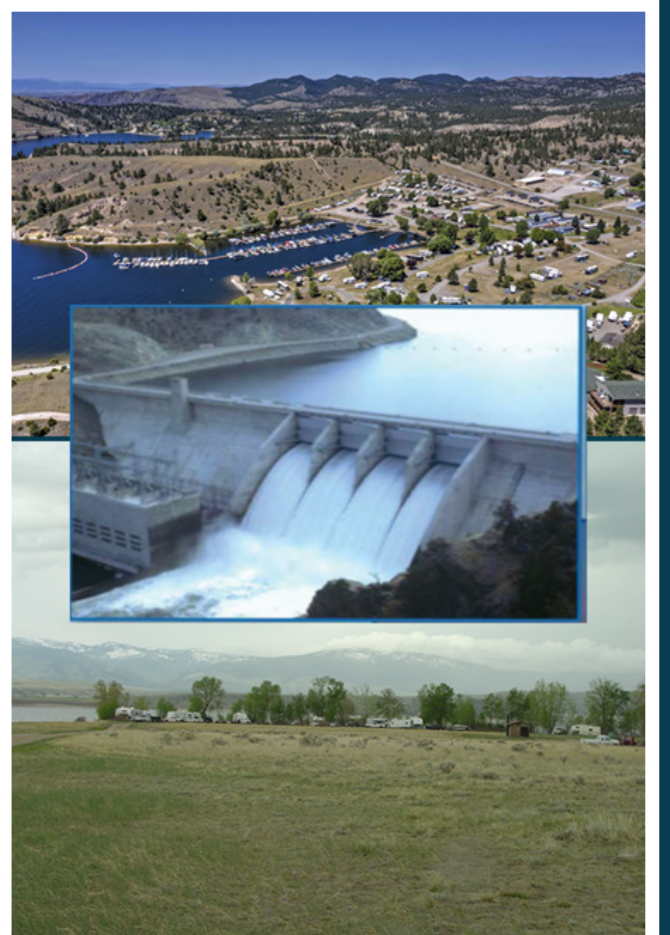
Reservoir & Recreation Area

# Welcome to Canyon Ferry



BUREAU OF RECLAMATION

## Canyon Ferry Reservoir & Recreation Area



U.S. Department of the Interior

Recreation.gov is used for making reservations from early May to mid-September. You can start making reservations 6 months prior to the date of use. All campsites are single unit campsites unless marked otherwise. Campers who possess a valid Senior or inter-agency Access Pass receive a 50 percent discount for their campsite fee.

calling 1-877-444-6777. Recreation.gov or by require a reservation through recreation.gov or by designated campsites. All designated campsites Developed campgrounds only allow camping in

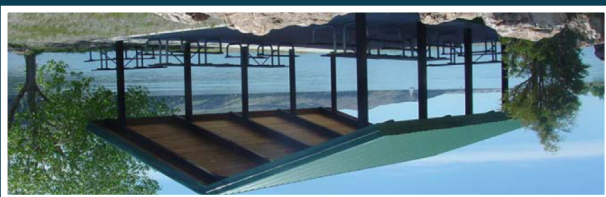
## Camping

There are twenty-three recreation areas and four marinas to accommodate all tastes. Camper and hikers can take advantage of twelve campgrounds, eleven day-use areas, and sheltered group sites. Some of these sites are available by reservation. Two additional areas offer a unique experience because they are only accessible by boat. One is Cemetery Island, day-use only and the other is Mahogany Cove where day use, and overnight camping is allowed.

Over 95 miles of shoreline offer many wide, long beaches – everything from steep cliffs to fine sand beaches, perfect for family outings. Wildlife is abundant drawing hunters and wildlife watchers alike. There is also some amazing fishing to be had both on the reservoir and below the dam.

Canyon Ferry Reservoir offers a wide range of year-round recreational opportunities. Water related activities include everything from swimming and fishing to sailing and motor-boating. Canoeists and kayakers explore the marshes and many quiet backwater bays. Jet skiers, windsurfers, and water skiers skim the summer waves, while winter draws ice fishermen, ice boaters, and skaters.

## Recreation



Off-Highway Vehicle (OHV) travel is prohibited on all Bureau of Reclamation lands surrounding Canyon Ferry Reservoir. There are numerous opportunities for OHV travel near the reservoir. For additional information, please contact the Helena Ranger District at 406-449-5490, or the Townsend Ranger District at 406-266-3425.

## Off-Highway Vehicles

There are four marina operations around Canyon Ferry Reservoir. These marinas provide many services including camping and boating supplies, fishing tackle, food, and beverage.

## Marinas

Group shelters are available by reservation at several locations around Canyon Ferry. Fees for group shelters vary. To make reservations, go to recreation.gov or call 1-877-444-6777.

## Group Shelters

There are several primitive campgrounds where dispersed camping is allowed. These areas are Indian Road, and Mahogany Cove. Mahogany Cove is only accessible by boat. office at Canyon Ferry.

The Volunteer Campground Host is on-site to assist in making your outing an enjoyable experience. Hosts make sure campground rules are followed, campsites and restrooms are clean and provide visitor services. Anyone interested in becoming a volunteer campground host may call or stop by the

## Rules and Regulations

- Camp only in designated sites.
- Campsites must be occupied.
- Camping is limited to 14 days during any consecutive 30-day period.
- Quiet hours are from 10 PM - 7 AM
- All wastewater and sewage must be contained and disposed of properly.
- Leave a clean campsite and remove all trash before vacating the site.
- Motorized vehicles must stay on established roadways and follow posted speed limits.
- Motorized vehicles must be street legal and operated by a licensed driver.
- Park vehicles and trailers in designated parking areas only.
- Build fires inside provided fire rings, don't leave fires unattended and ensure they are completely extinguished after each use.
- Collect only dead and downed wood for campfires or bring firewood with you.
- Do not deface, destroy, or remove public property including natural and cultural resources.
- Keep pets physically restrained and do not allow pets to cause noise disturbances.
- Do not discharge weapons or other projectile firing devices.
- Use of explosives or fireworks is prohibited.
- Day use areas close at 10 PM.
- BBQ Pedestals are for charcoal cooking only. Building wood fires in them is prohibited.

## Fire Danger

Each year wildfires destroy wildlife habitat, recreation facilities, and natural resources. Here are some ways you can help protect your natural resources:

- Find out about area fire restrictions before you visit public lands and strictly observe any special fire restrictions that may be in effect.
- Put campfires out by putting water or dirt on the flames. Make sure the fire is "dead out" before you leave. Coals should be cool enough to touch. This includes the charcoal in BBQ Pedestals.

- Keep a shovel or bucket on hand.
- Do not park on, or drive through, dry grass or brush.
- If you see a wildfire, report it immediately by calling 911.

## Online Reservations

- Log in to recreation.gov or mobile app.
- In the search bar – Search for the recreation site you want.
- Select – View by Availability – Search and select available dates.
- Select – Book Now – Follow prompts.
- After making a reservation, you will receive an email confirmation receipt that is used to confirm your reserved site and date(s) of use.

## Recreation Info

Canyon Ferry Division	(406) 475-3310
Montana Fish, Wildlife & Parks	(406) 444-2535
Reservations	(877) 444-6777

## Marinas

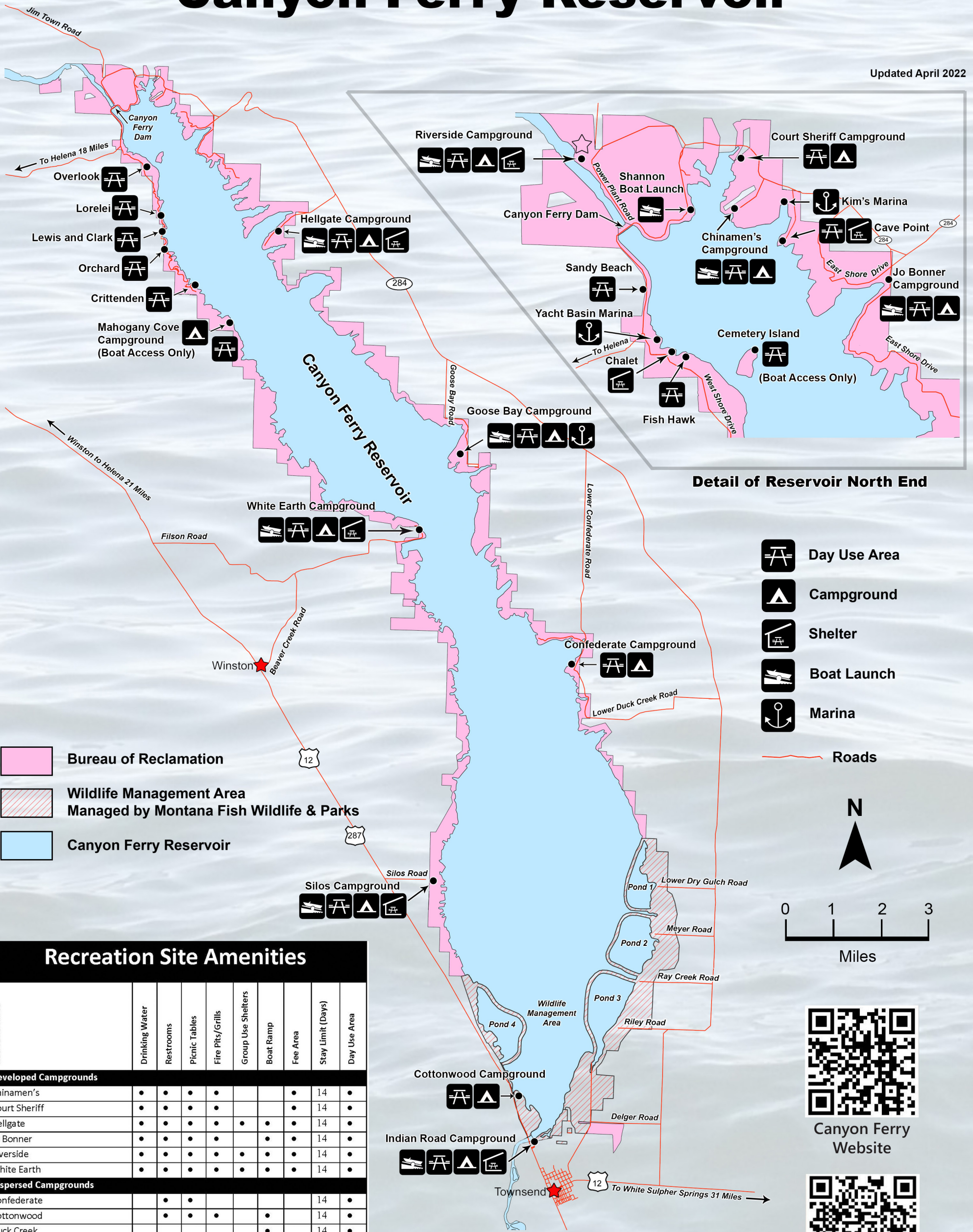
Kim's Marina	(406) 475-3723
Yacht Basin Marina	(406) 475-3440
Goose Bay Marina	(406) 266-3065
Silos Campground & Marina	(406) 587-9054

## Emergency or Law Enforcement

Police, Fire & Emergency	911
Montana Highway Patrol	(800) 525-5555
Lewis & Clark County Sheriff	(406) 447-8235
Broadwater County Sheriff	(406) 266-3441
Report Fish & Game Violations	(800) 847-6668
Helena Ranger District	(406) 449-5490
Townsend Ranger District	(406) 266-3425

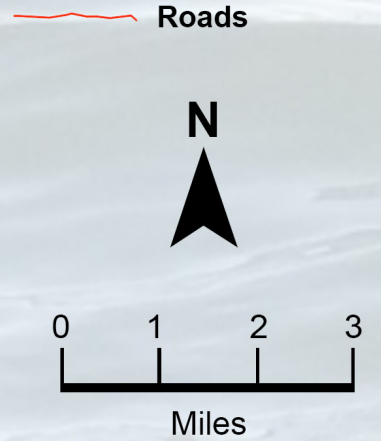
# Canyon Ferry Reservoir

Updated April 2022



- Day Use Area
- Campground
- Shelter
- Boat Launch
- Marina

- Bureau of Reclamation
- Wildlife Management Area  
Managed by Montana Fish Wildlife & Parks
- Canyon Ferry Reservoir



## Recreation Site Amenities

Recreation Area	Drinking Water	Restrooms	Picnic Tables	Fire Pits/Grills	Group Use Shelters	Boat Ramp	Fee Area	Stay Limit (Days)	Day Use Area
<b>Developed Campgrounds</b>									
Chinamen's	•	•	•	•			•	14	•
Court Sheriff	•	•	•	•			•	14	•
Hellgate	•	•	•	•	•	•	•	14	•
Jo Bonner	•	•	•	•		•	•	14	•
Riverside	•	•	•	•	•	•	•	14	•
White Earth	•	•	•	•	•	•	•	14	•
<b>Dispersed Campgrounds</b>									
Confederate		•	•					14	•
Cottonwood		•	•	•		•		14	•
Duck Creek						•		14	•
Goose Bay		•	•					14	•
Indian Road		•	•	•	•	•		14	•
Mahogany Cove (Boat Access)		•	•					14	•
<b>Day Use Sites (Close at 10 PM)</b>									
Cave Bay		•	•	•	•		•		•
Cemetery Island (Boat Access)		•	•						•
Crittenden		•	•	•					•
Fish Hawk		•	•	•					•
Lewis and Clark		•	•	•					•
Lorelei		•	•	•					•
Mayhood									•
Orchard		•	•	•					•
Overlook		•	•	•					•
Sandy Beach		•							•
Shannon		•				•			•



Canyon Ferry Website



Recreation.gov Reservations



BUREAU OF RECLAMATION